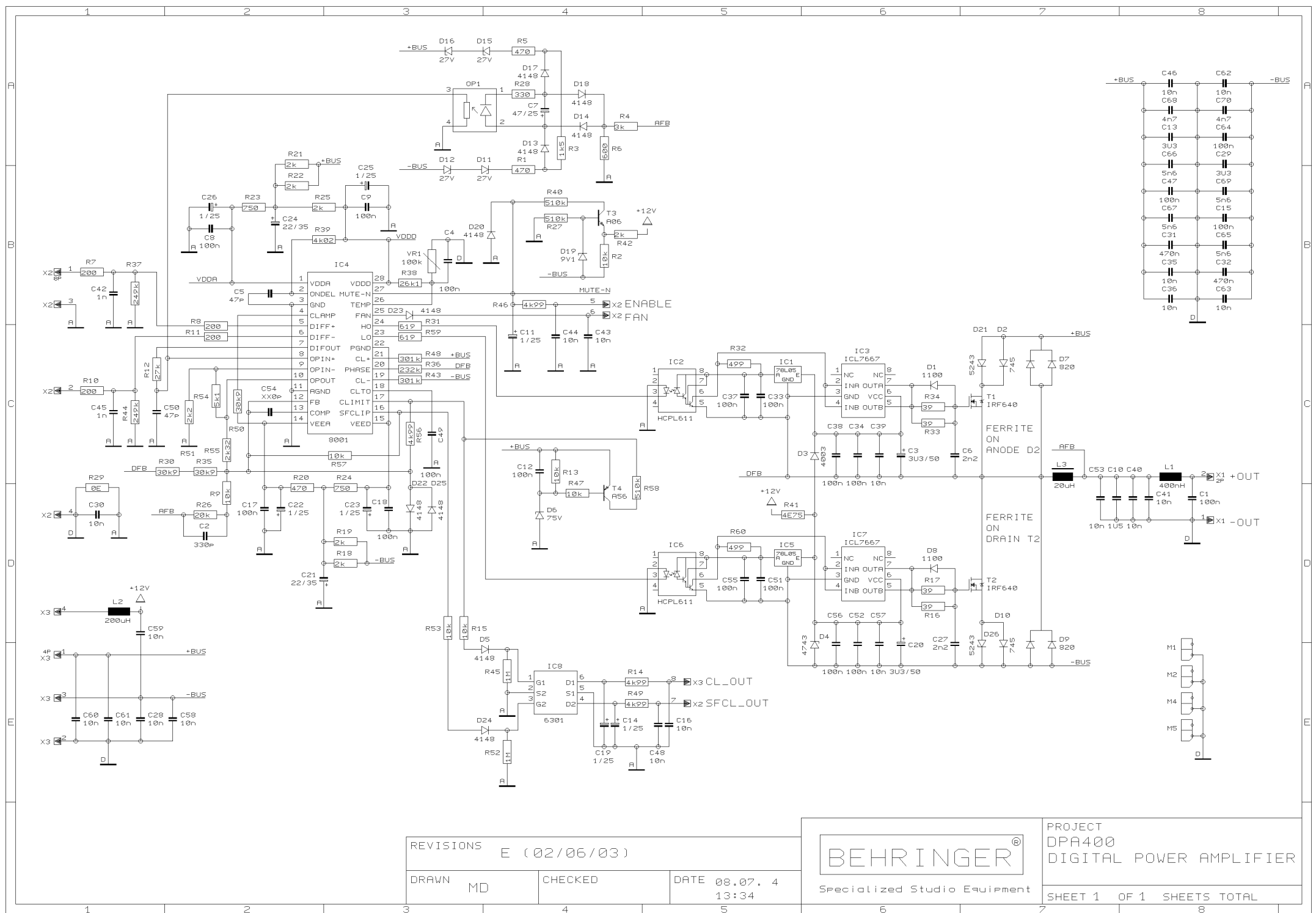


REVISIONS F (11/08/04)

DRAWN MD CHECKED DATE 23.02. 5 12:14



PROJECT  
DPA400  
DIGITAL POWER AMPLIFIER  
SHEET 1 OF 1 SHEETS TOTAL



REVISIONS E (02/06/03)

DRAWN MD

CHECKED

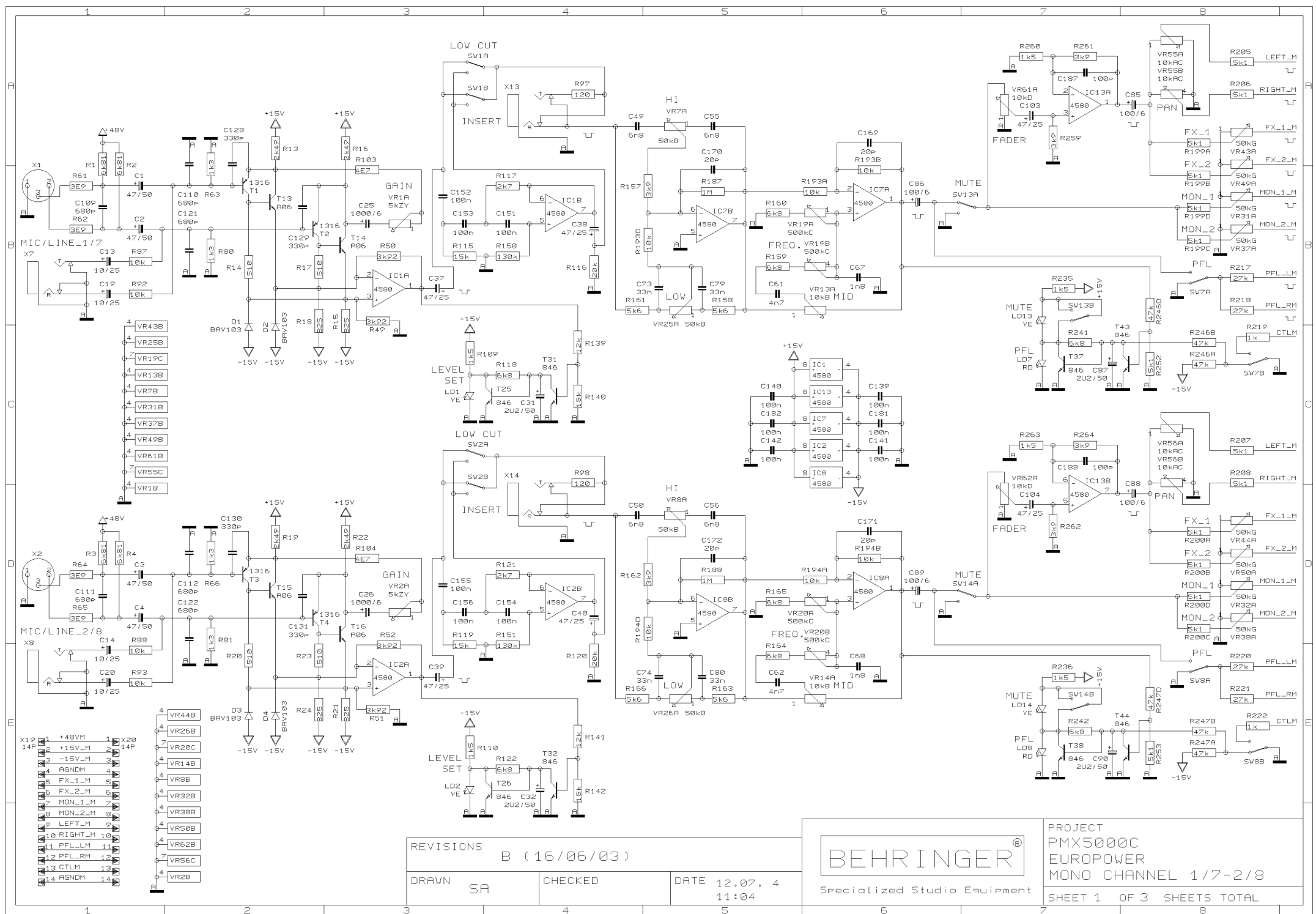
DATE 08.07. 4  
13:34

BEHRINGER®

Specialized Studio Equipment

PROJECT  
DPA400  
DIGITAL POWER AMPLIFIER

SHEET 1 OF 1 SHEETS TOTAL



REVISIONS B (16/06/03)

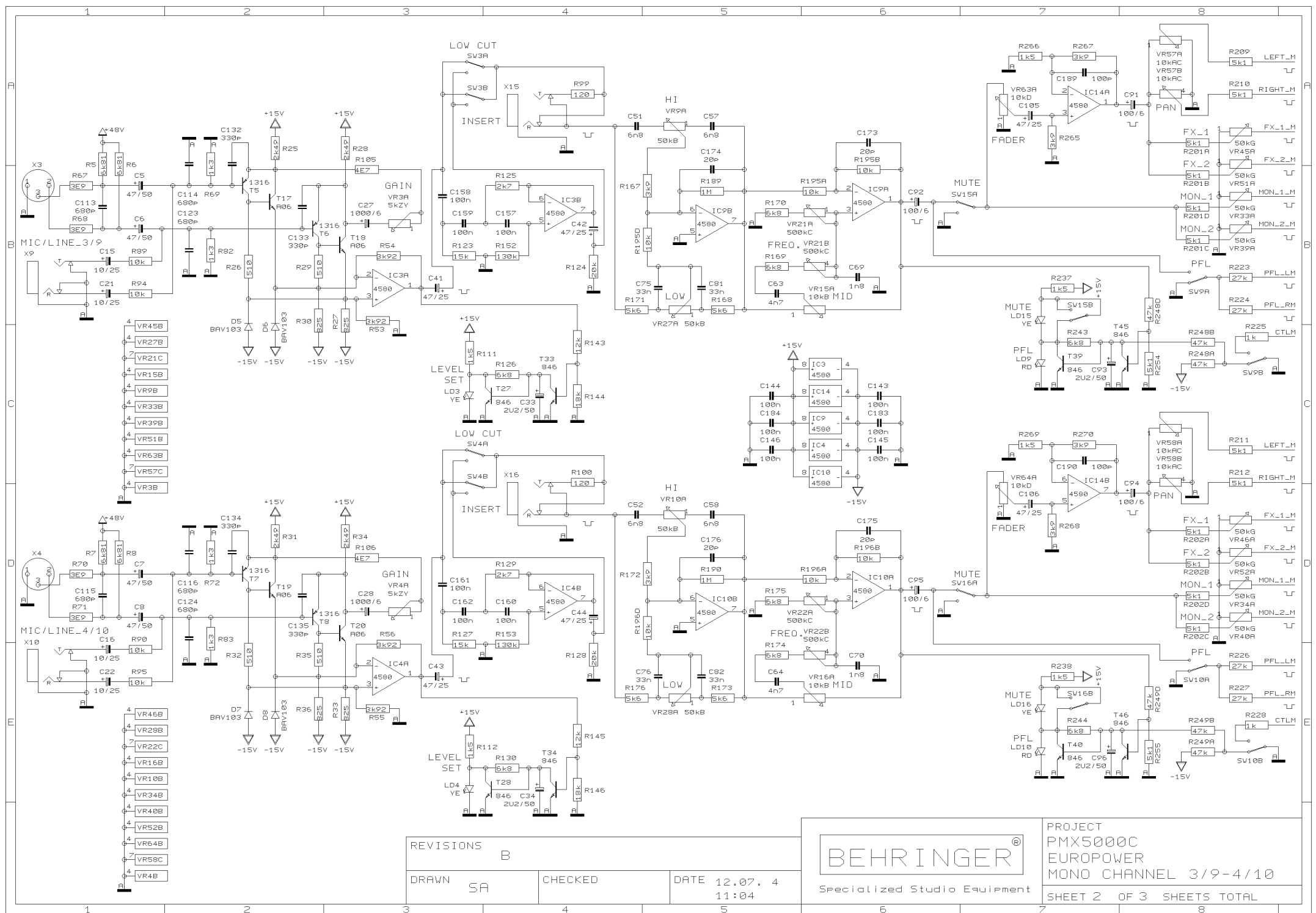
DRAWN SA

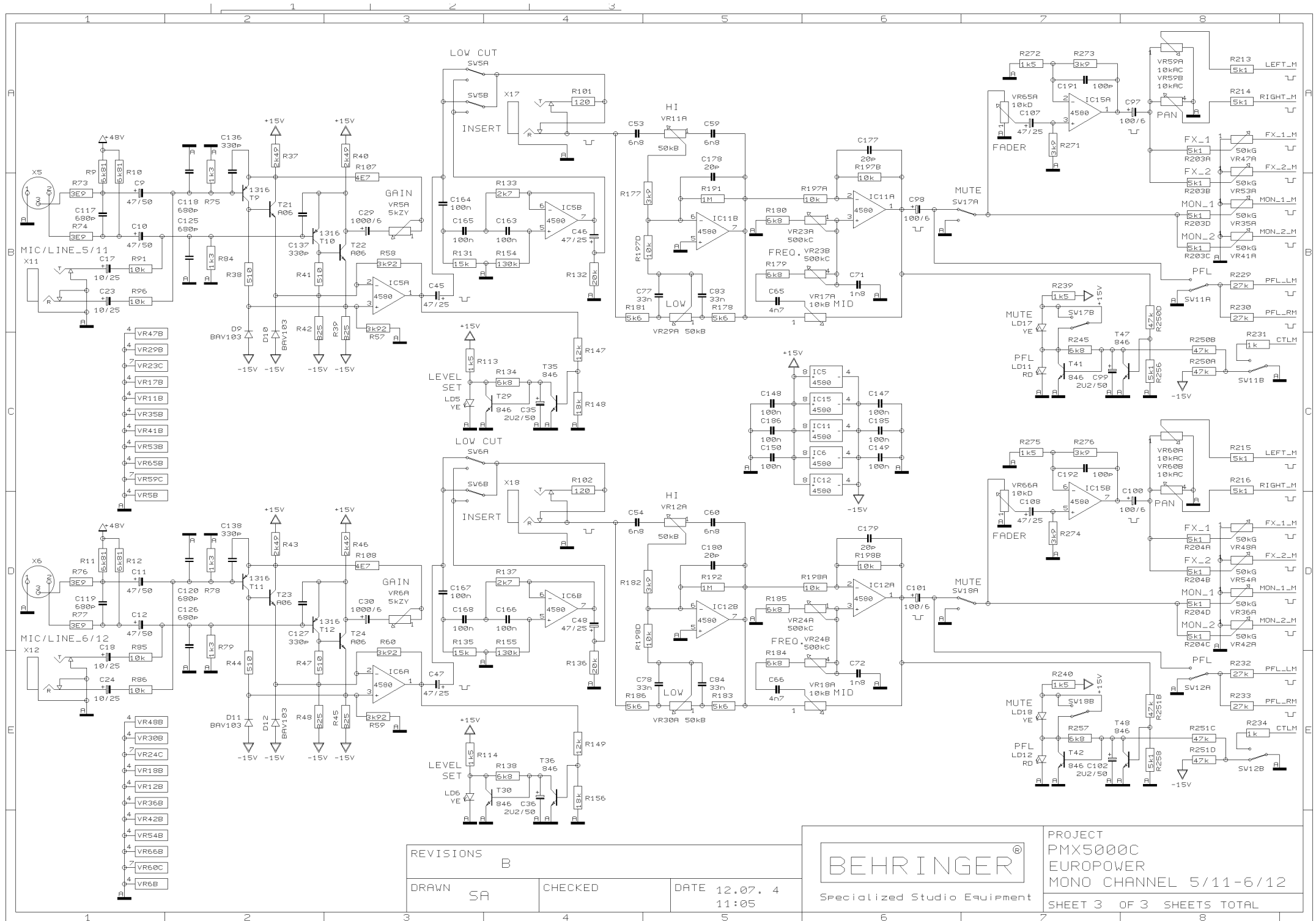
CHECKED

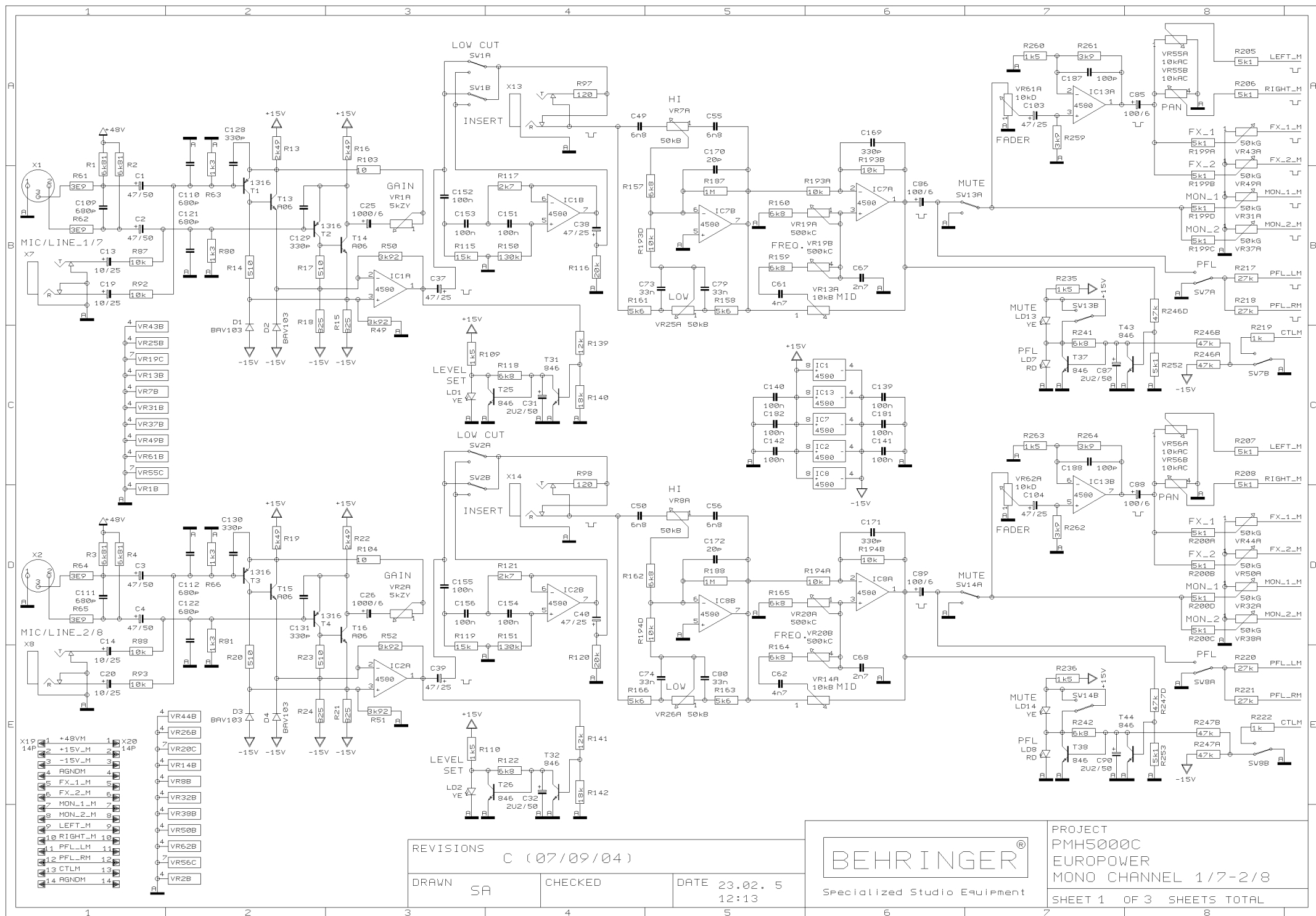
DATE 12.07. 4  
11:04

BEHRINGER®  
Specialized Studio Equipment

PROJECT  
PMX5000C  
EUPOWER  
MONO CHANNEL 1/7-2/8  
SHEET 1 OF 3 SHEETS TOTAL





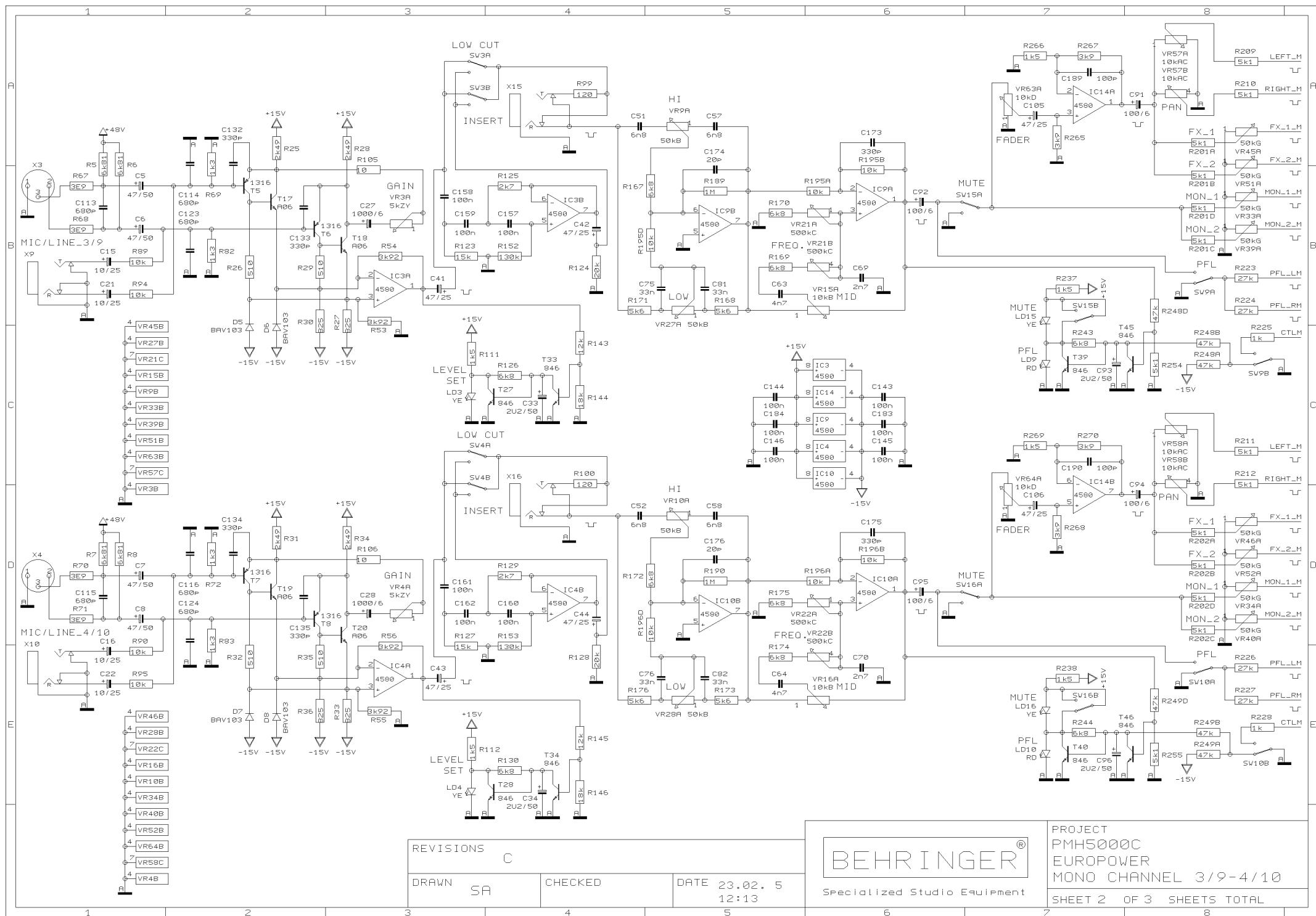


REVISIONS C (07/09/04)

DRAWN SA CHECKED DATE 23.02. 5 12:13



PROJECT PMH5000C  
EUROPOWER  
MONO CHANNEL 1/7-2/8  
SHEET 1 OF 3 SHEETS TOTAL



REVISIONS

C

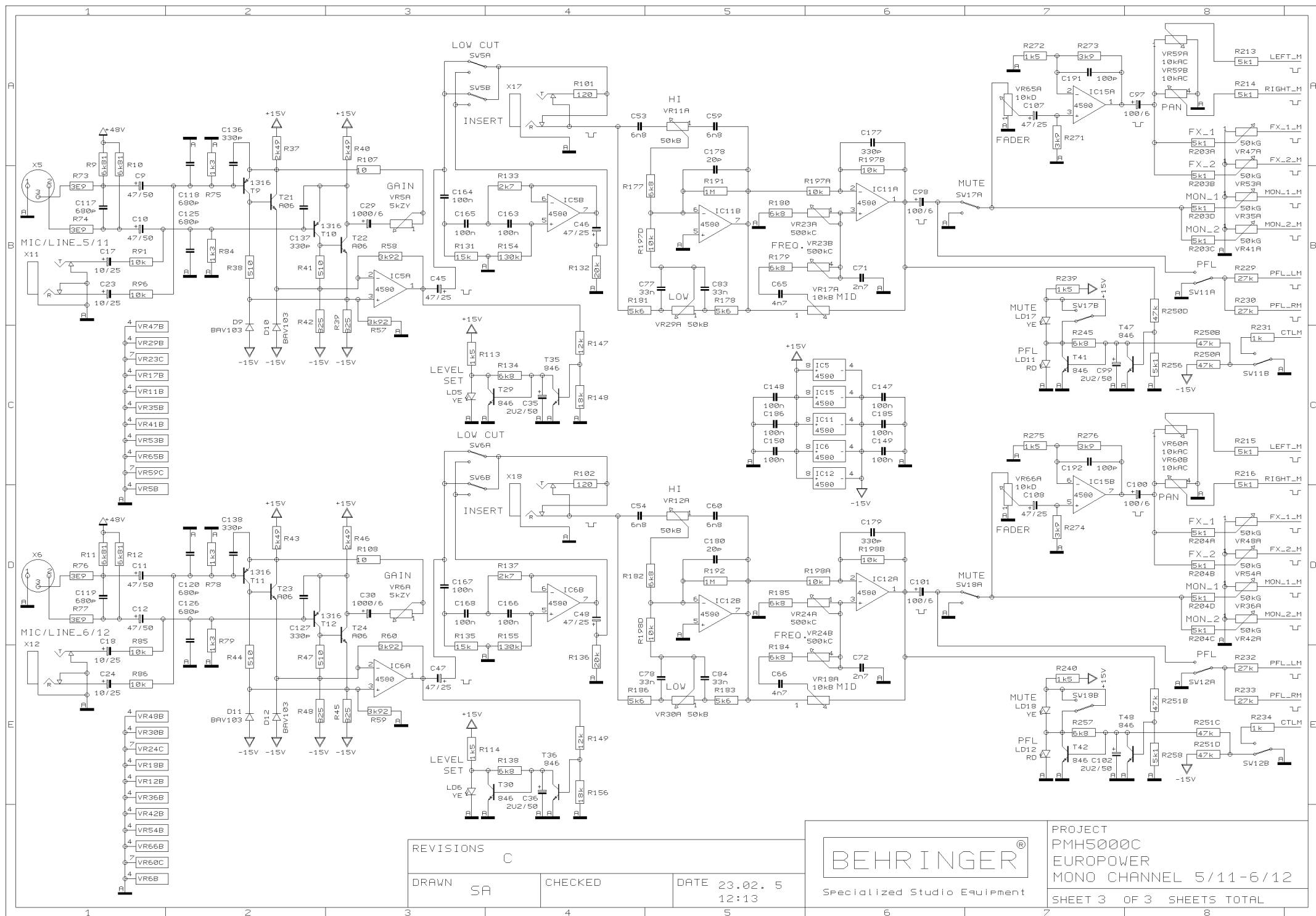
DRAWN SA

CHECKED

DATE 23.02. 5  
12:13

BEHRINGER®  
Specialized Studio Equipment

PROJECT  
PMH5000C  
EUROPOWER  
MONO CHANNEL 3/9-4/10  
SHEET 2 OF 3 SHEETS TOTAL



REVISIONS

C

DRAWN SA

CHECKED

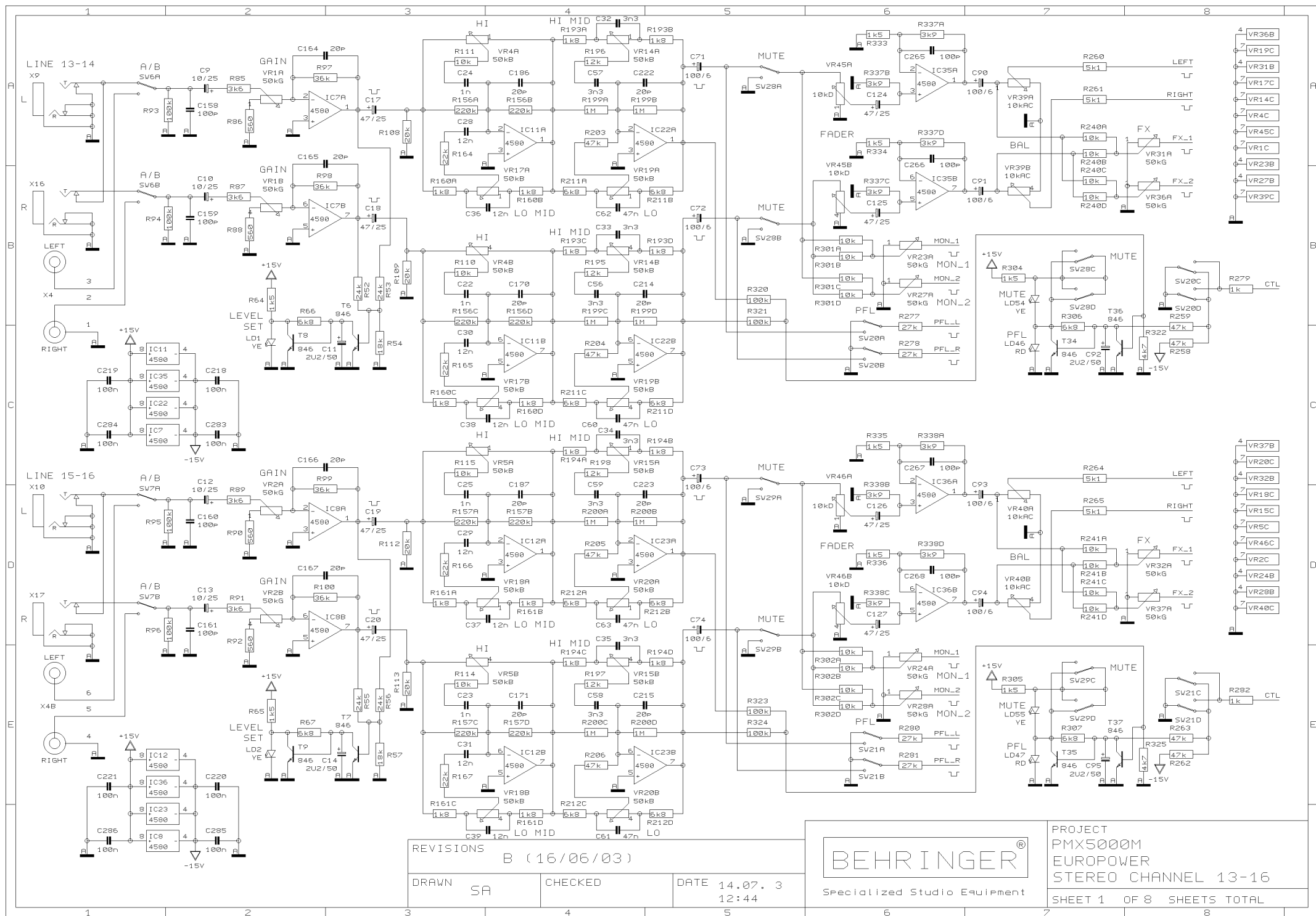
DATE 23.02. 5  
12:13

BEHRINGER®

Specialized Studio Equipment

PROJECT  
PMH5000C  
EUROPOWER  
MONO CHANNEL 5/11-6/12  
SHEET 3 OF 3 SHEETS TOTAL



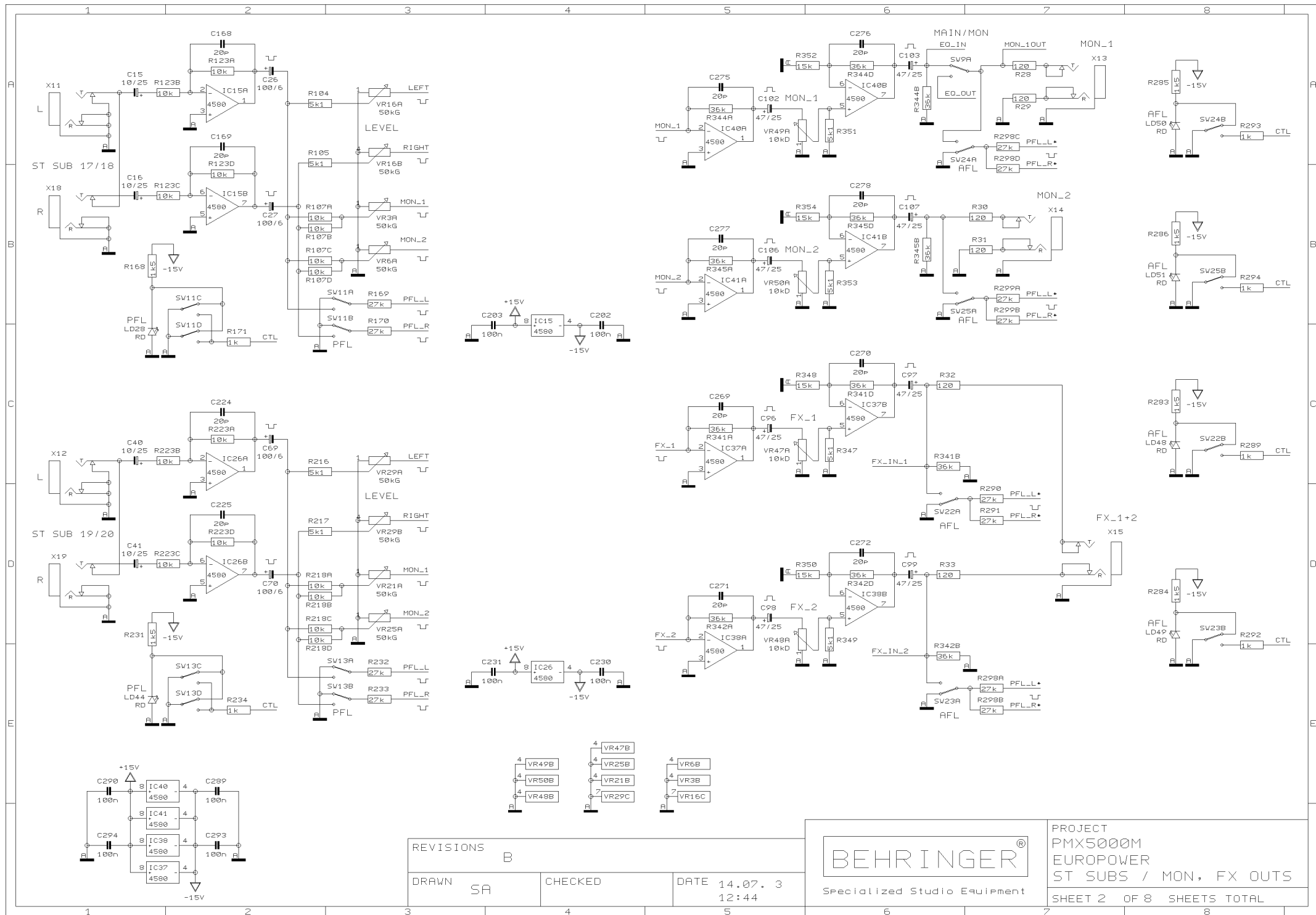


REVISIONS  
B (16/06/03)

DRAWN	SA	CHECKED	DATE
			14.07. 3 12:44



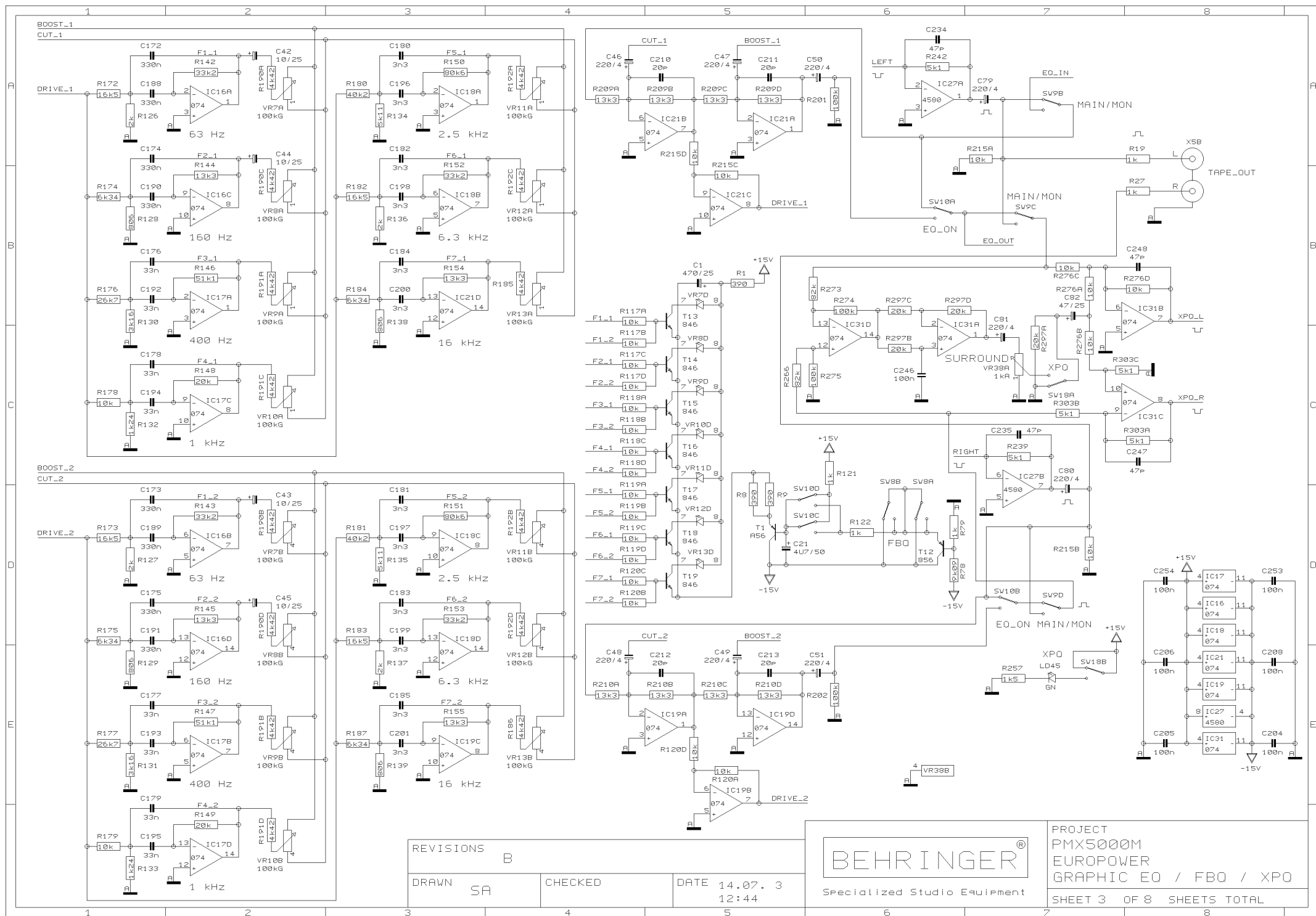
PROJECT  
PMX5000M  
EUROPOWER  
STEREO CHANNEL 13-16  
SHEET 1 OF 8 SHEETS TOTAL



REVISIONS		B	
DRAWN	SA	CHECKED	DATE 14.07. 3 12:44



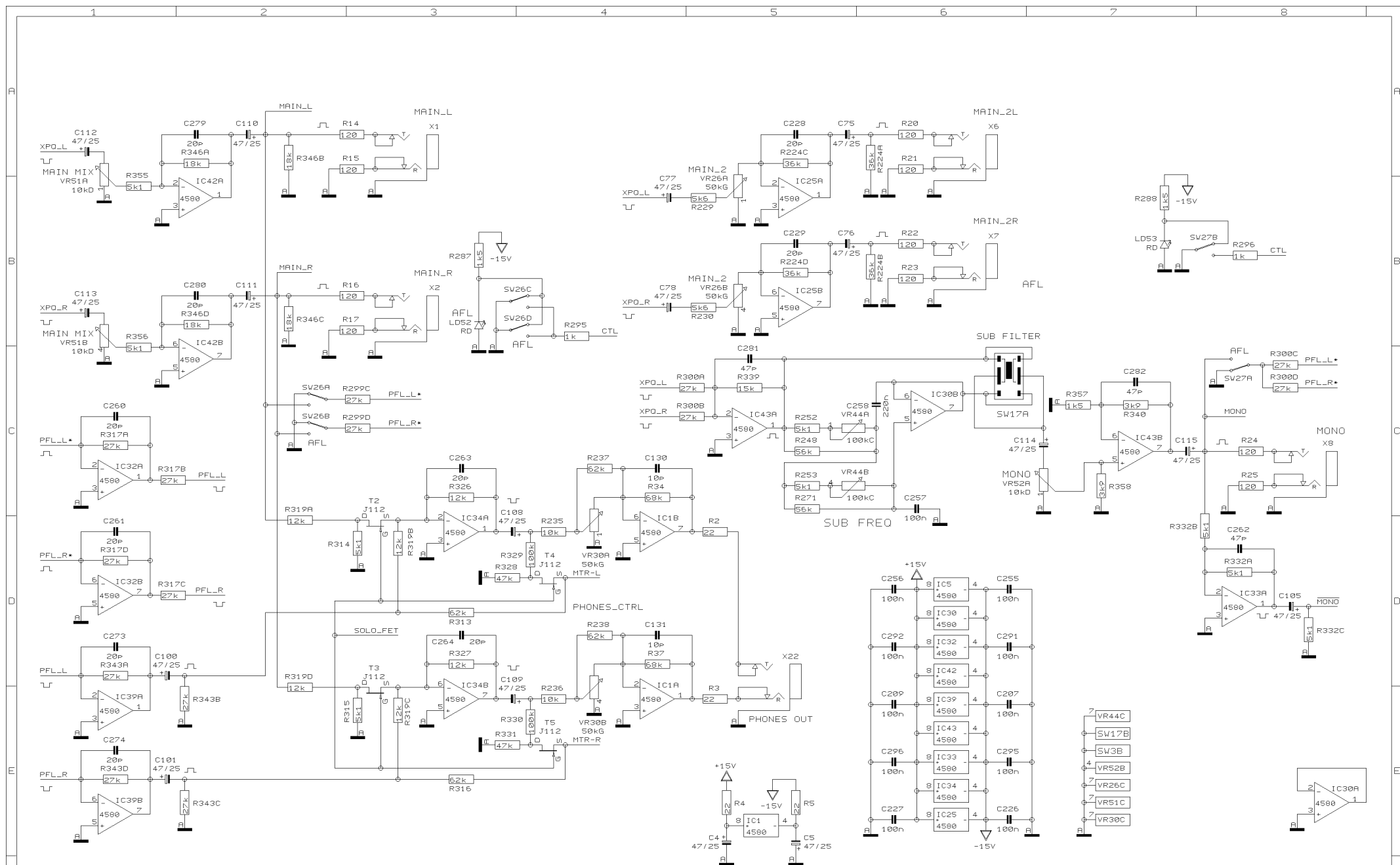
PROJECT  
PMX5000M  
EUROPOWER  
ST SUBS / MON, FX OUTS  
SHEET 2 OF 8 SHEETS TOTAL



REVISIONS		B	
DRAWN		SA	CHECKED
DATE		14.07. 3	12:44



PROJECT  
PMX5000M  
EUROPOWER  
GRAPHIC EQ / FBO / XPO  
SHEET 3 OF 8 SHEETS TOTAL



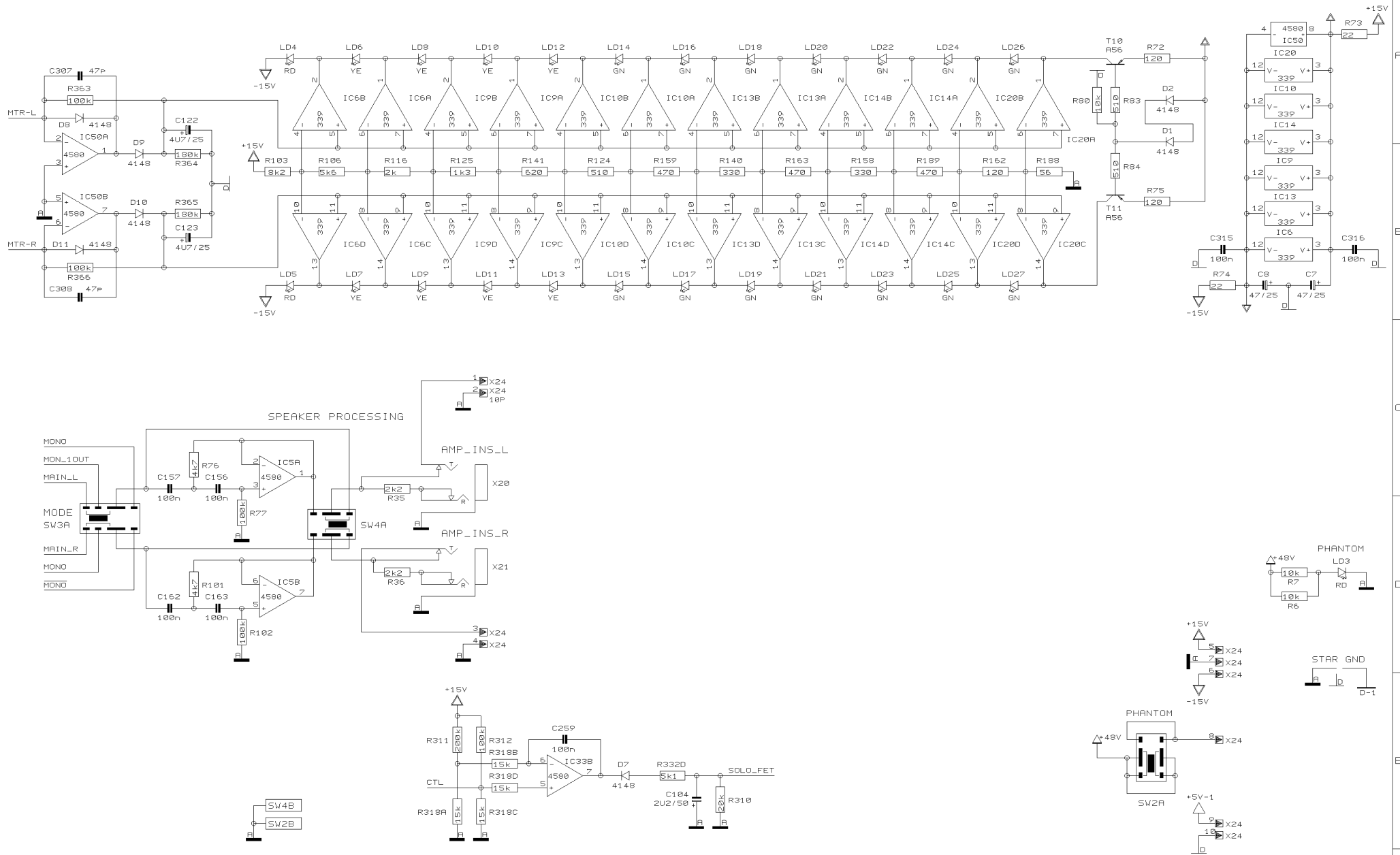
REVISIONS	B
DRAWN	SA
CHECKED	
DATE	14.07. 3 12:44



PROJECT  
PMX5000M  
EUROPOWER  
MAIN SECTION

SHEET 4 OF 8 SHEETS TOTAL





REVISIONS

B

DRAWN SA

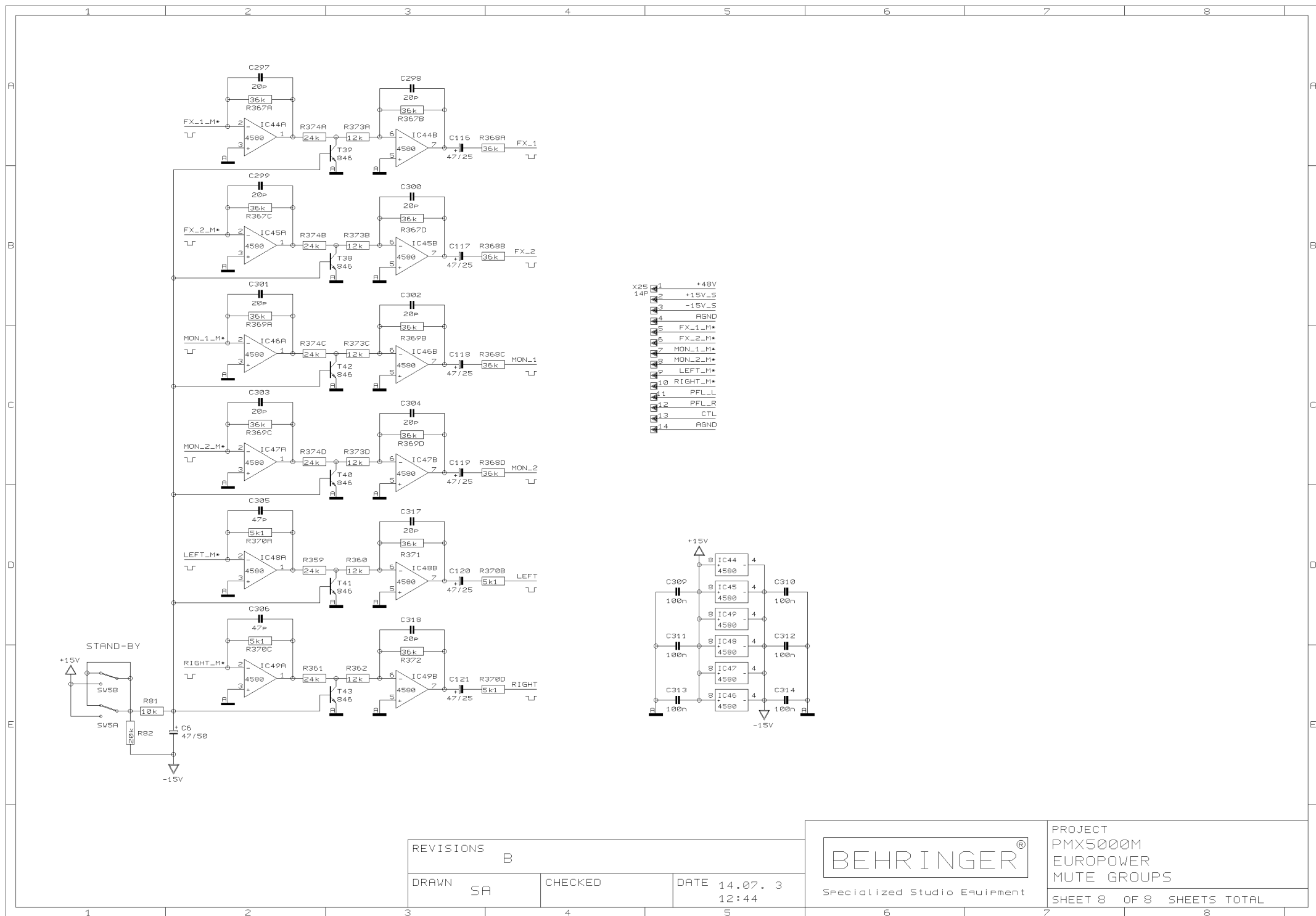
CHECKED

DATE 14.07. 3  
12:44

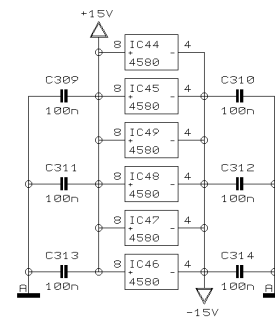
**BEHRINGER®**  
Specialized Studio Equipment

PROJECT  
PMX5000M  
EUROPOWER  
LED METER & FX RETURN  
SHEET 6 OF 8 SHEETS TOTAL





- x25 1 +48V  
14P 2 +15V\_S  
3 -15V\_S  
4 AGND  
5 FX\_1\_M\*  
6 FX\_2\_M\*  
7 MON\_1\_M\*  
8 MON\_2\_M\*  
9 LEFT\_M\*  
10 RIGHT\_M\*  
11 PFL\_L  
12 PFL\_R  
13 CTL  
14 AGND



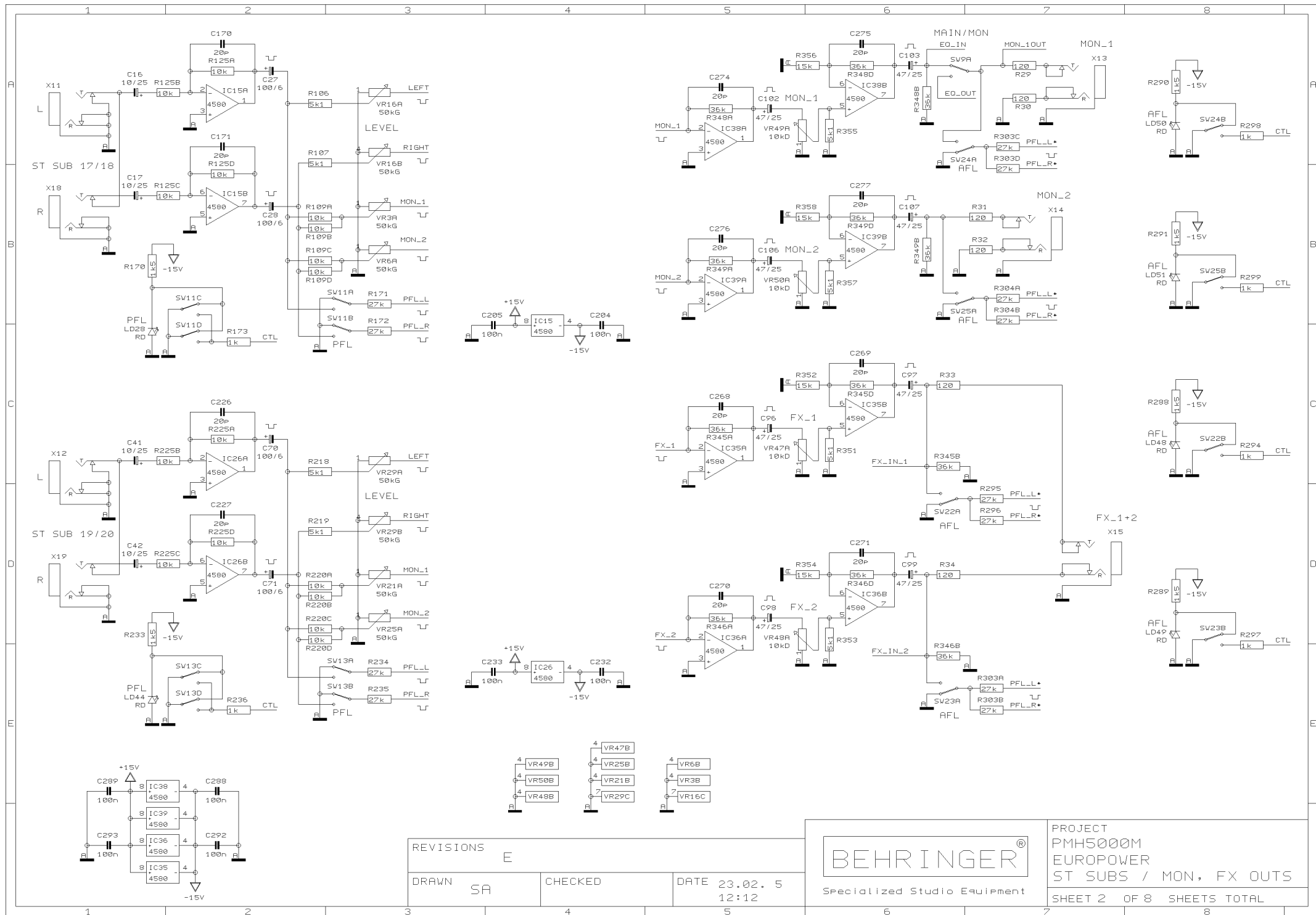
REVISIONS		B	
DRAWN	SA	CHECKED	DATE 14.07. 3 12:44

BEHRINGER®  
Specialized Studio Equipment

PROJECT		PMX5000M	
		EUROPOWER	
		MUTE GROUPS	
SHEET 8		OF 8	SHEETS TOTAL







REVISIONS

E

DRAWN SA

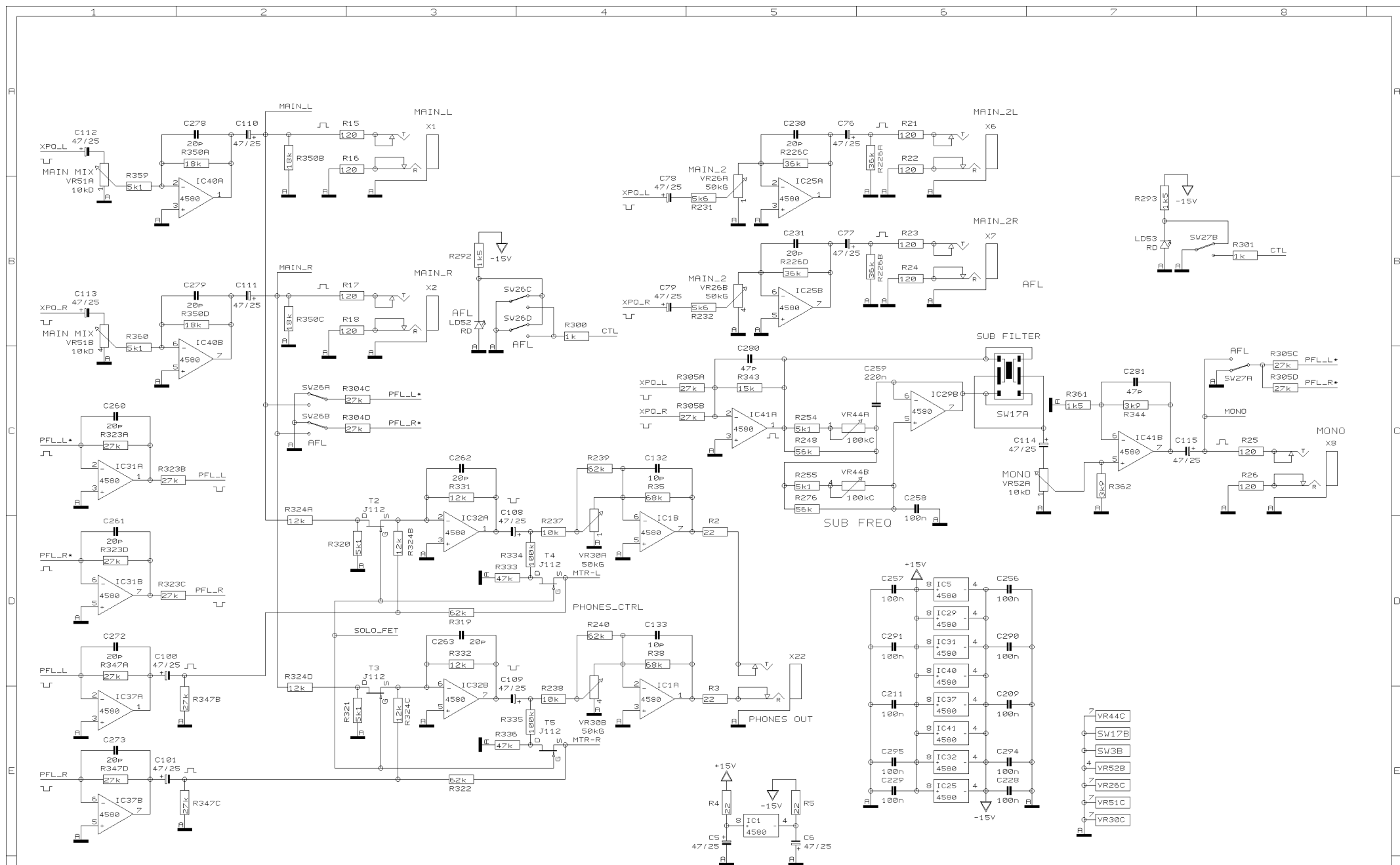
CHECKED

DATE 23.02. 5  
12:12

BEHRINGER®  
Specialized Studio Equipment

PROJECT  
PMH5000M  
EUROPOWER  
ST SUBS / MON, FX OUTS  
SHEET 2 OF 8 SHEETS TOTAL

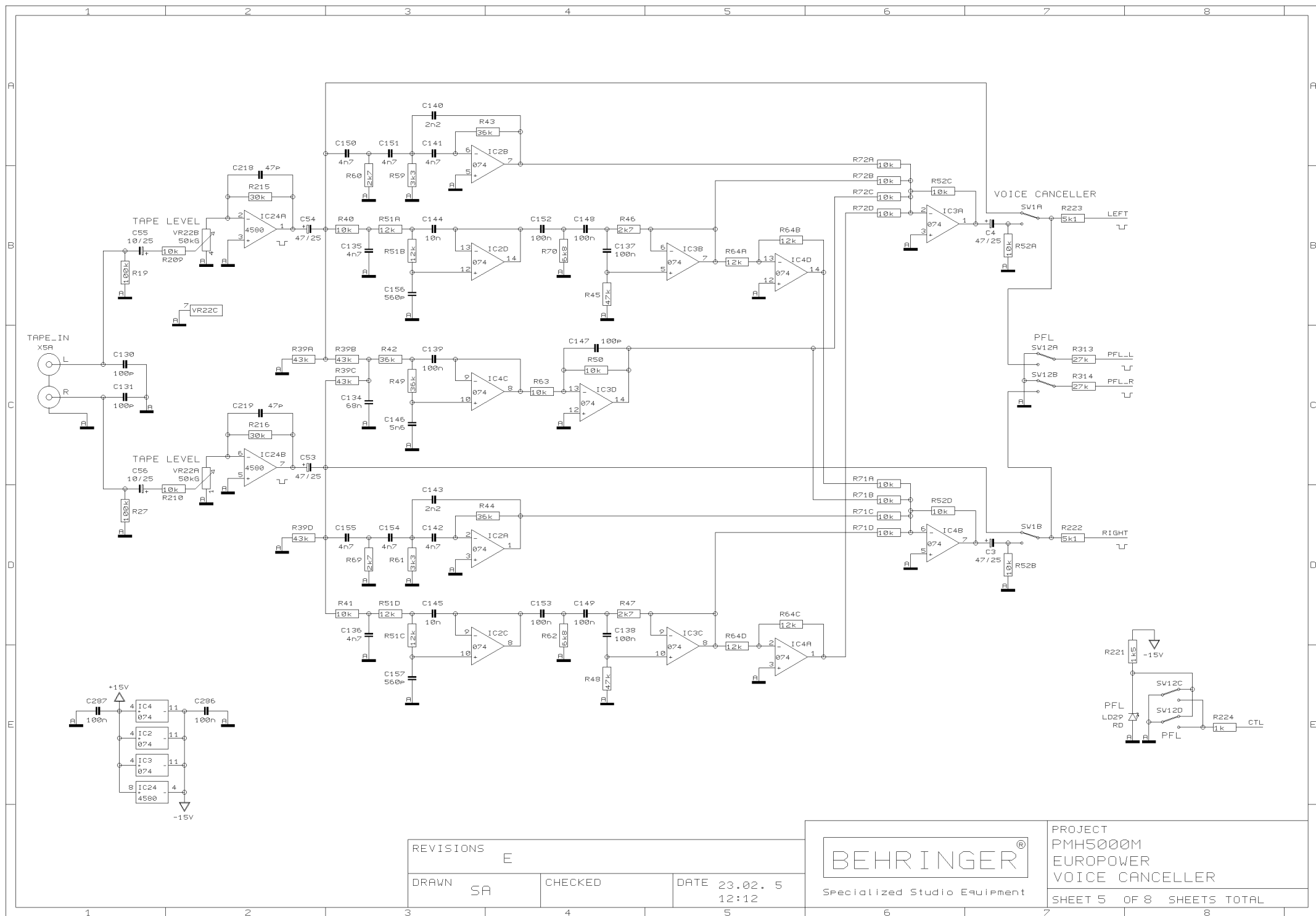




REVISIONS		E	
DRAWN	SA	CHECKED	DATE 23.02. 5 12:12



PROJECT		PMH5000M	
		EUROPOWER	
		MAIN SECTION	
SHEET 4		OF 8 SHEETS TOTAL	



REVISIONS

E

DRAWN SA

CHECKED

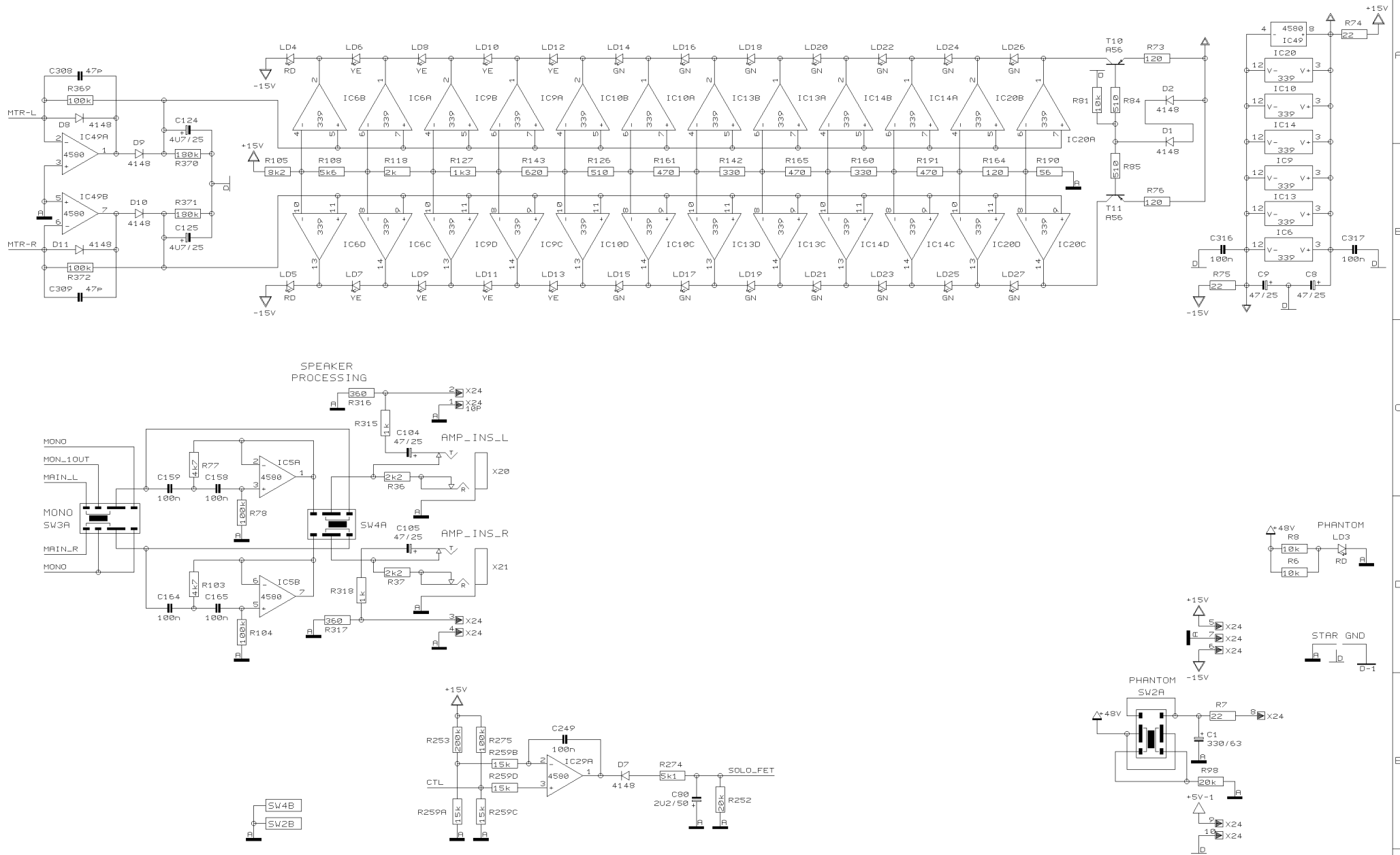
DATE 23.02. 5  
12:12

BEHRINGER®

Specialized Studio Equipment

PROJECT  
PMH5000M  
EUROPOWER  
VOICE CANCELLER

SHEET 5 OF 8 SHEETS TOTAL



REVISIONS

E

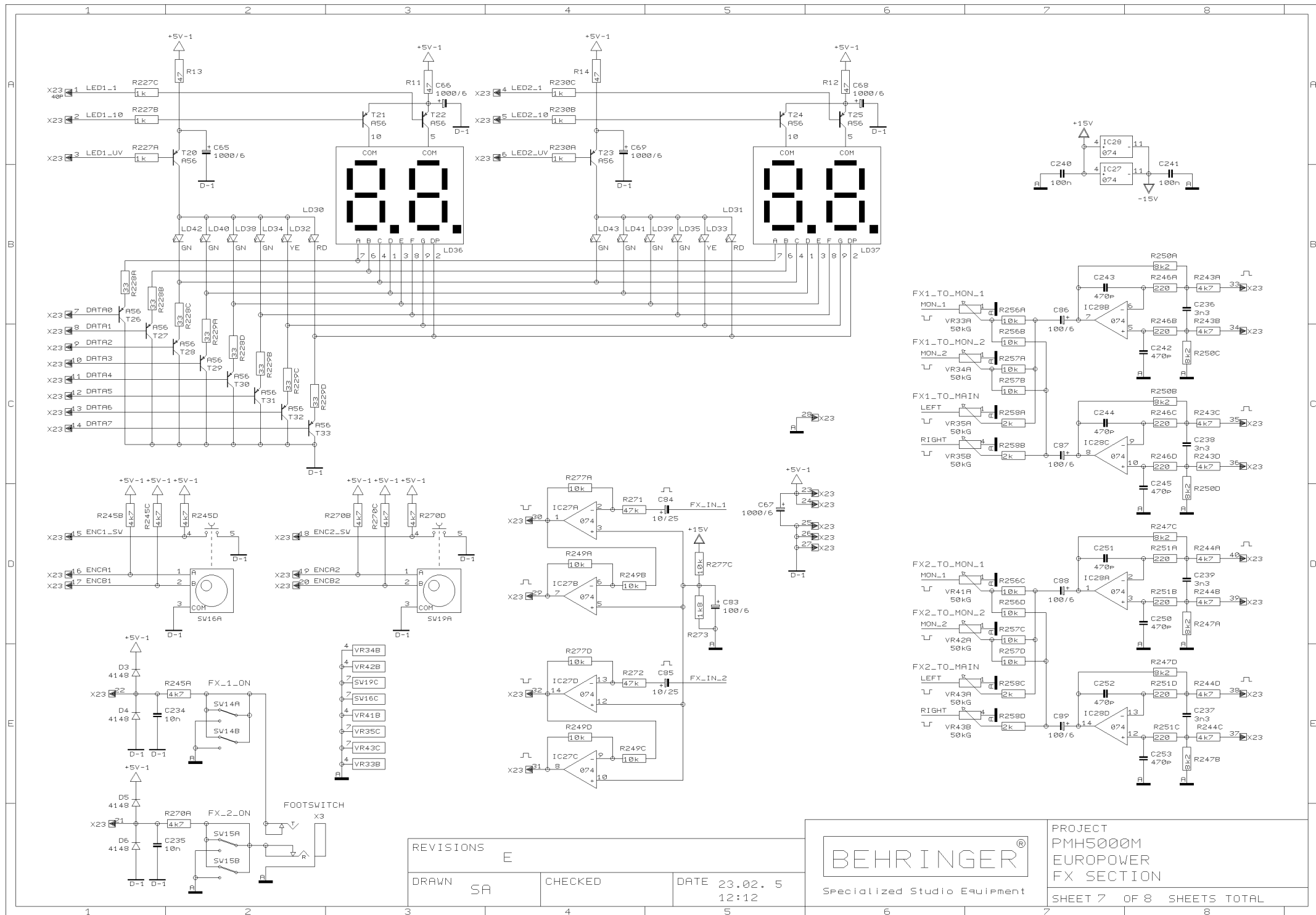
DRAWN SA

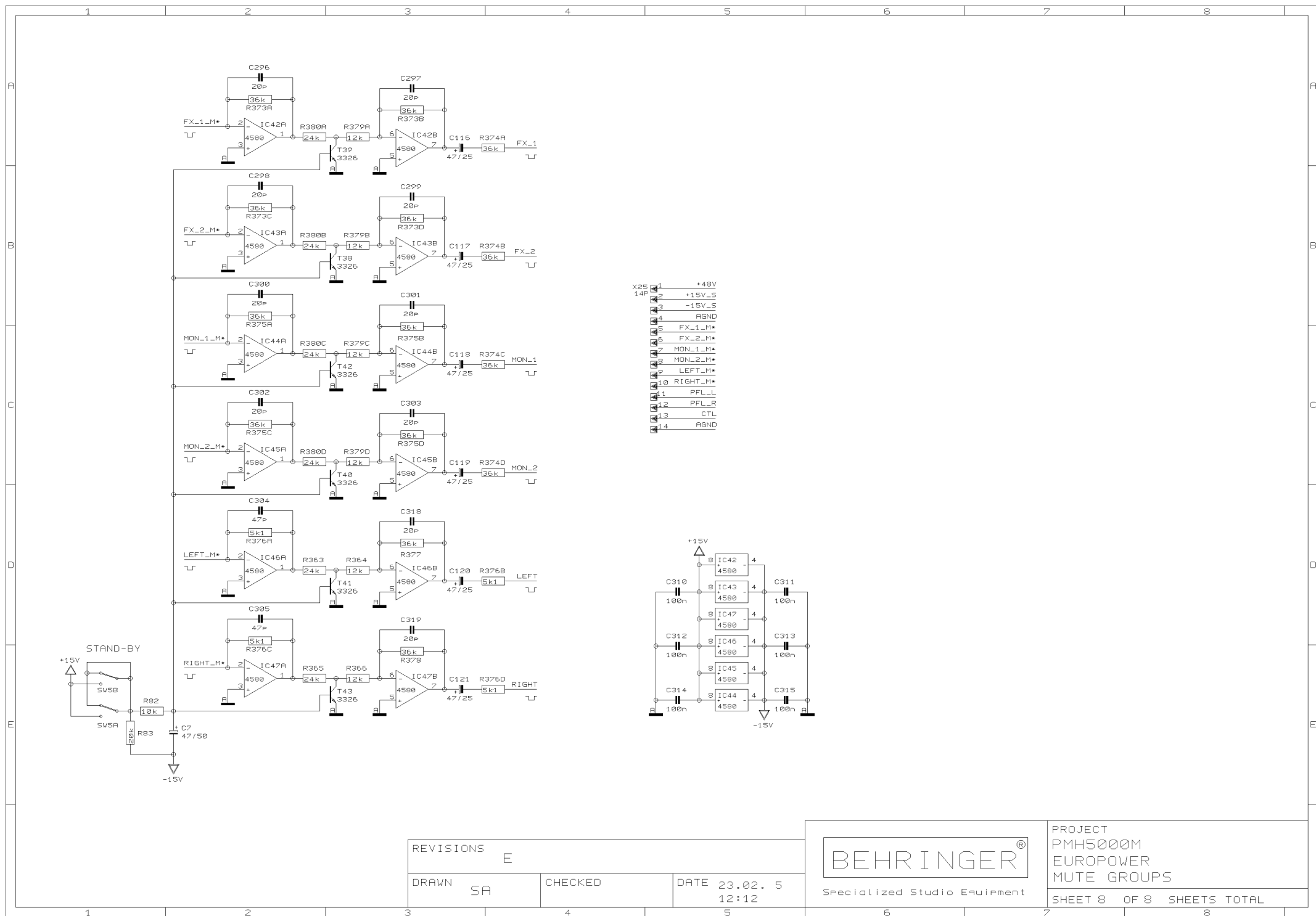
CHECKED

DATE 23.02. 5  
12:12

**BEHRINGER®**  
Specialized Studio Equipment

PROJECT  
PMH5000M  
EUROPOWER  
LED METER & FX RETURN  
SHEET 6 OF 8 SHEETS TOTAL





REVISIONS

E

DRAWN

SA

CHECKED

DATE 23.02. 5  
12:12

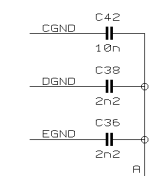
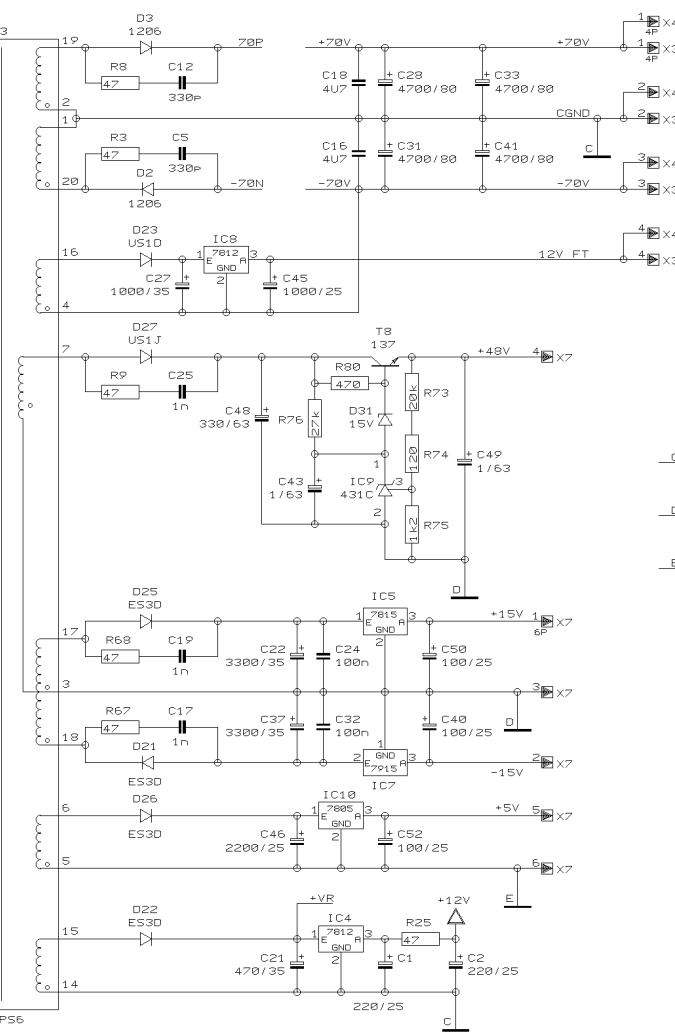
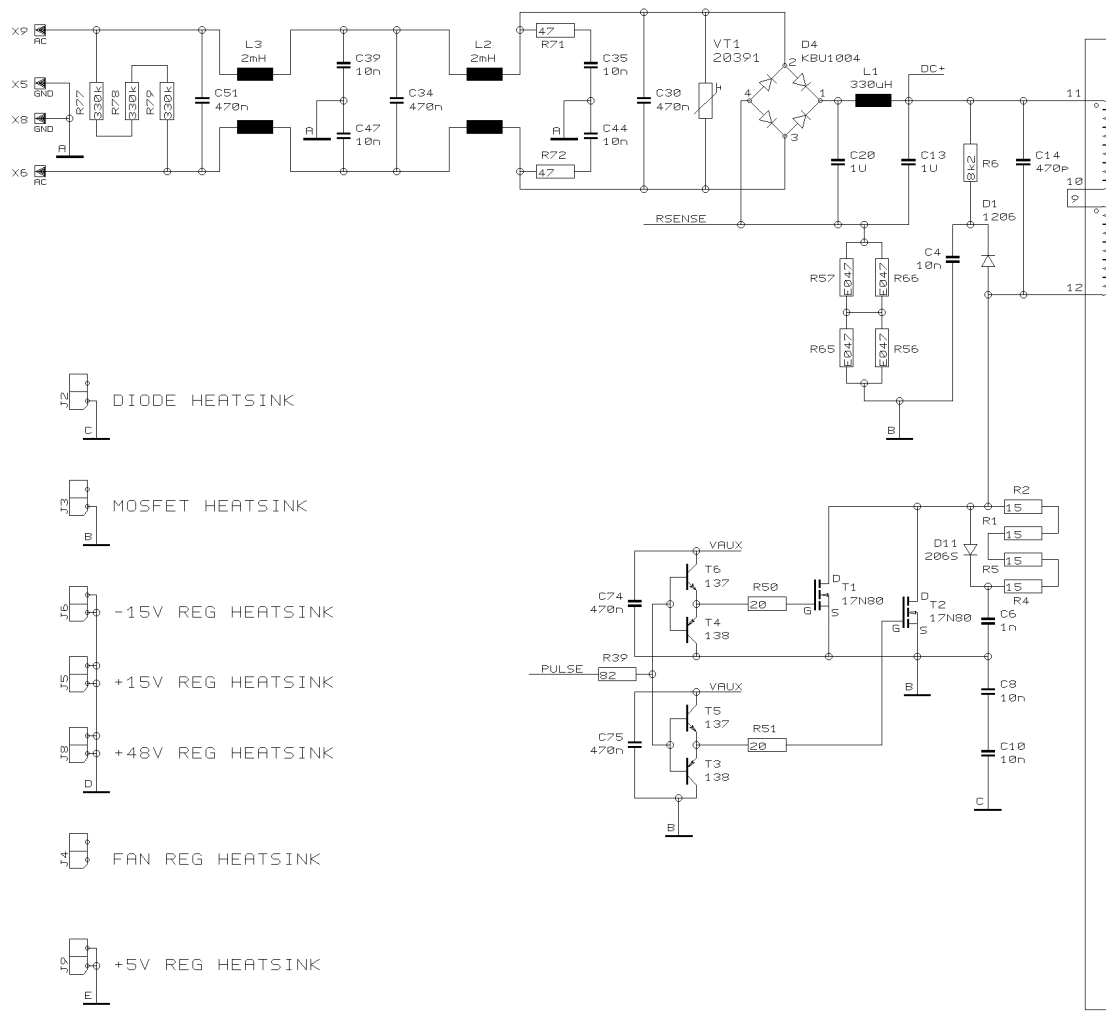
BEHRINGER®

Specialized Studio Equipment

PROJECT  
PMH5000M  
EUROPOWER  
MUTE GROUPS

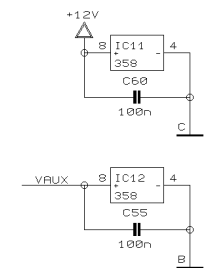
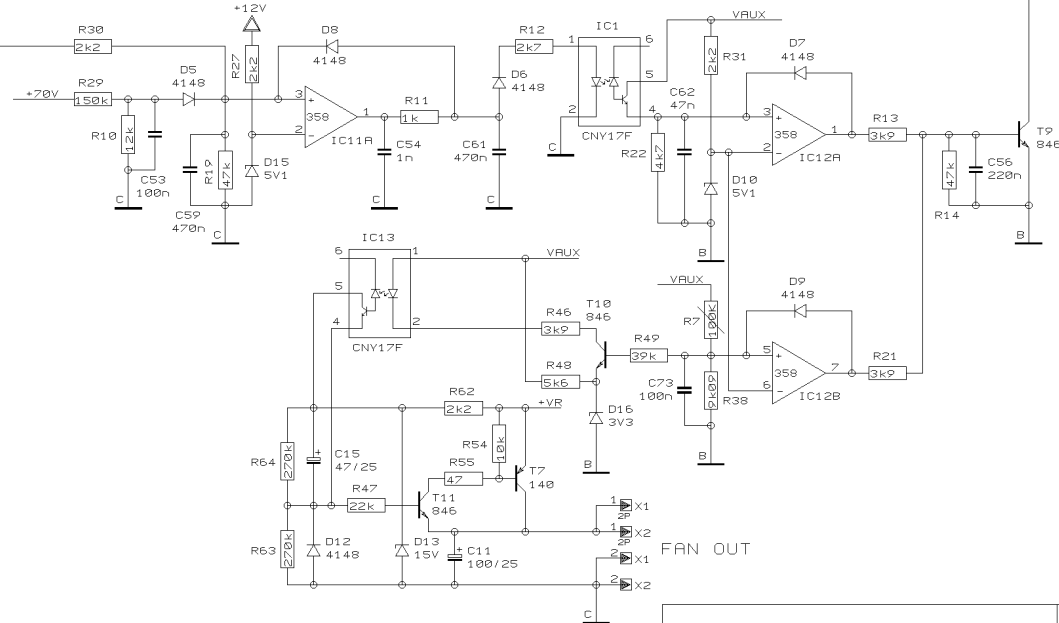
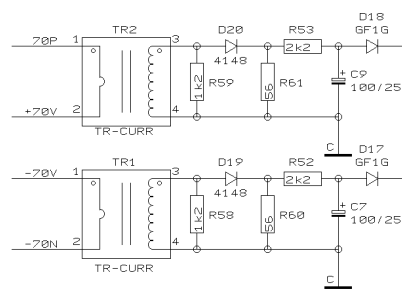
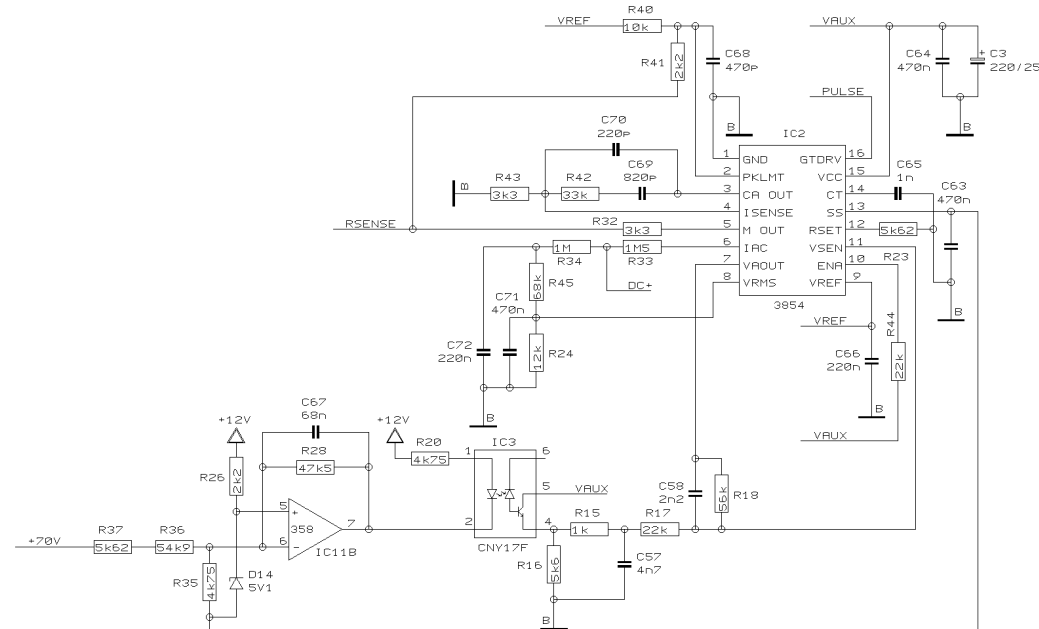
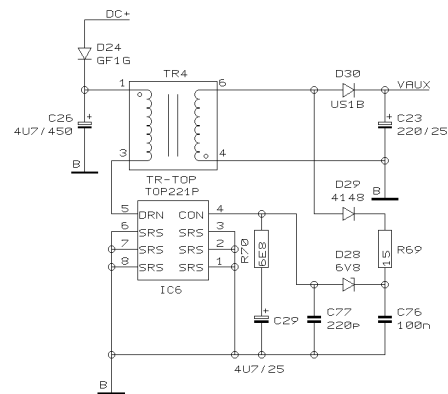
SHEET 8 OF 8 SHEETS TOTAL





- DIODE HEATSINK
- MOSFET HEATSINK
- 15V REG HEATSINK
- +15V REG HEATSINK
- +48V REG HEATSINK
- FAN REG HEATSINK
- +5V REG HEATSINK
- 12V FLOAT REG HEATSINK
- CLAMP DIODE HEATSINK

REVISIONS			E (28/05/04)		
DRAWN	SASA	CHECKED	DATE	12.07. 4	14:30
BEHRINGER®			Specialized Studio Equipment		
PROJECT			SPS600		
			POWER SUPPLY 600W		
			SCHEMATICS		
SHEET 1			OF 2 SHEETS TOTAL		



REVISIONS		E
DRAWN	SASA	CHECKED
DATE		12.07. 4
		14:30

BEHRINGER®  
Specialized Studio Equipment

PROJECT  
SPS600  
POWER SUPPLY 600W  
SCHEMATICS  
SHEET 2 OF 2 SHEETS TOTAL