

6

5

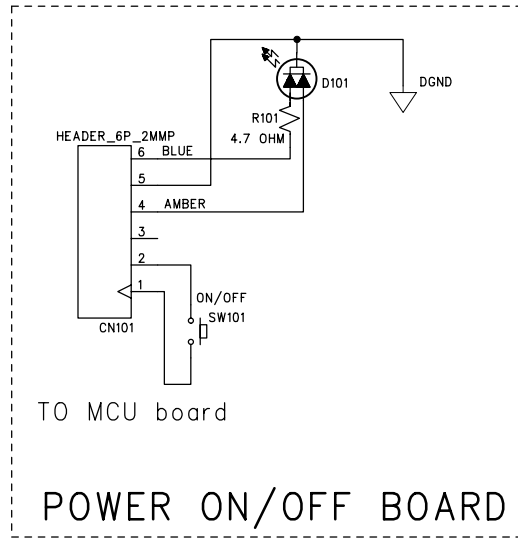
4

3

2

1

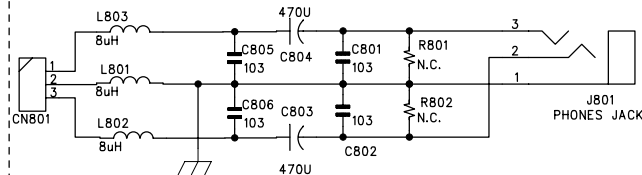
PCB: 4897-150110-001, Rev.D



Remark:

- C805, C806 soldered on solder side.
- C805, C806 soldered to GND by wire with a 0.22uF cap in series.

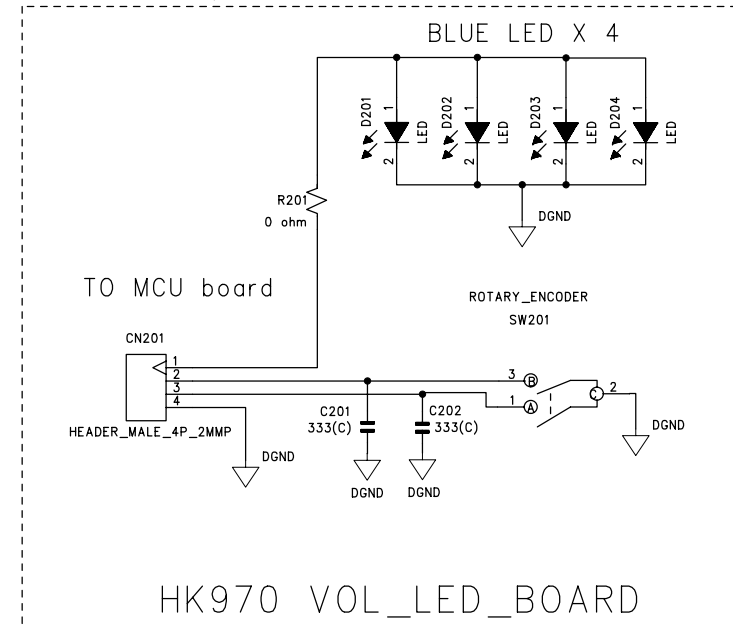
## HEADPHONE JACK BOARD



PCB: 4897-150020-001, Rev.B

FILE NAME: VOLLED\_ONOFF\_970\_6.SCH

PCB: 4897-150190-001, Rev.E



Volum Knob Board

REVISION RECORD			
LTR	ECO NO:	APPROVED:	DATE:

COMPANY:

TITLE:

HK970 FRONT BOARDS

DRAWN:

DATED:

2005-MAR-08

CHECKED:

DATED:

QUALITY CONTROL:

DATED:

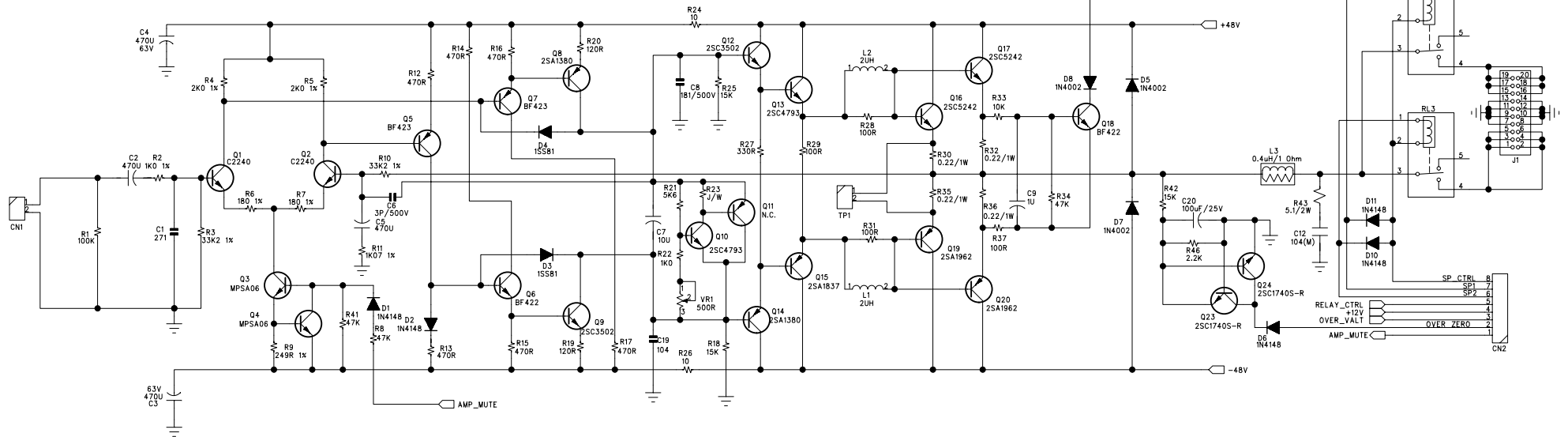
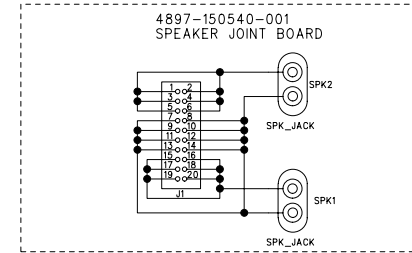
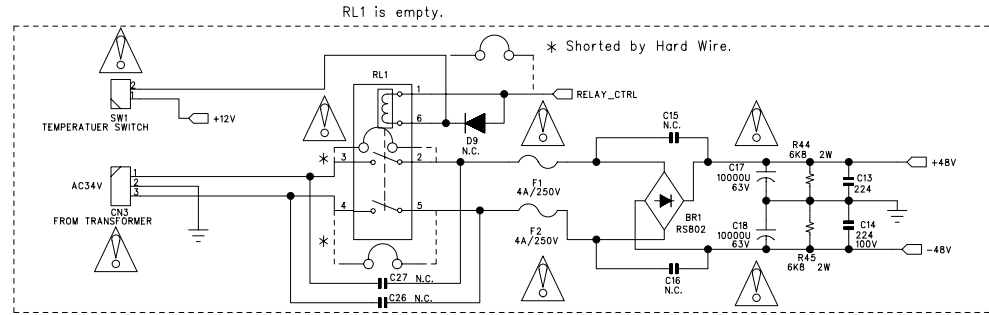
RELEASED:

DATED:

SCALE:

SHEET: OF

YN	SCHEMATIC DRAWING		FILE NAME: LEFTAMP_970.SCH
	HKENF 970004-00		DATE: 2004-10-28
MODEL NO: HK970	PART NO: 4867-000090-101	PART NAME: LEFT CHANNEL POWER AMPLIFIER	
	4897-150540-001	SPEAKER JOINT BOARD	



PURPOSE: SAMPLE MAKING	PRODUCTION	SHEET 1 OF 1	REV A
PREPARED BY:	CHECKED BY:	APPROVED BY:	

YN

SCHEMATIC DRAWING  
HKENF 970004-00

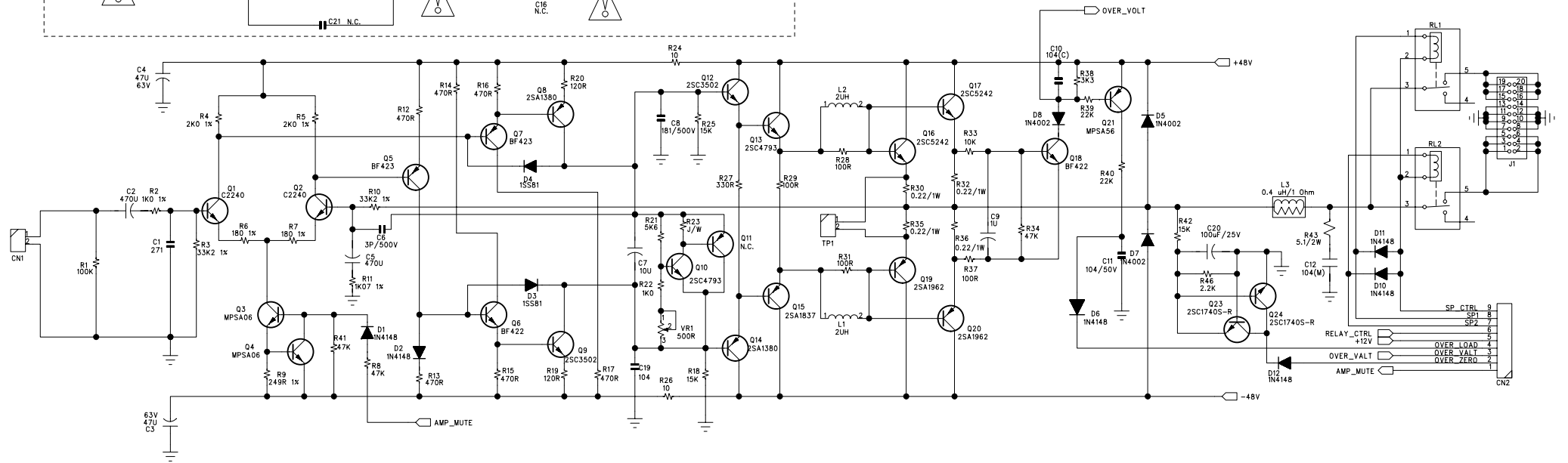
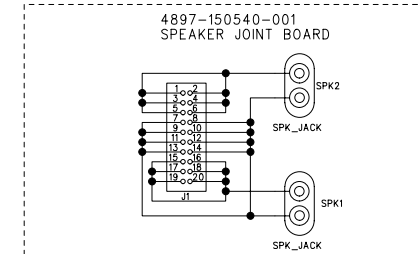
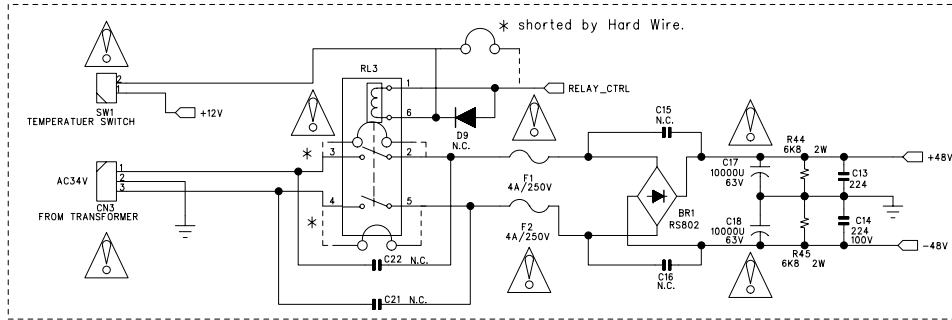
FILE NAME: RIGHTAMP\_970.SCH

DATE: 2004-10-28

MODEL NO: HK970

PART NO: 4867-000090-001  
4897-150540-001PART NAME: RIGHT CHANNEL POWER AMPLIFIER  
SPEAKER JOINT BOARD

RL3 is empty.



[illegible]

MODEL NO: HK970

PART NO: 4897-150230-001, REV.F

PART NAME: HK970\_MCU\_VFD BOARD

PURPOSE: SAMPLE MAKING	PRODUCTION	<input checked="" type="checkbox"/> SHEET	OF	REV
PREPARED BY:	CHECKED BY:	APPROVED BY:		



## SCHEMATIC DRAWING

HKENF 970004-00

FILE NAME: SUPPLY\_970\_11.SCH

DATE: 2005-JAN-05

MODEL NO: HK970

PART NO:

PART NAME: POWER SUPPLY BOARD

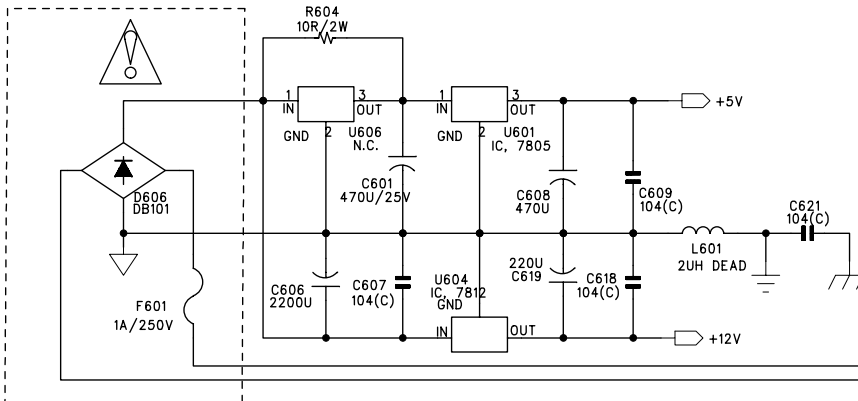
SP\_CTRL  
SP1  
SP2  
RELAY\_CTRL  
+12V  
PROTECT\_OUT  
OVER\_LOAD  
OVER\_ZERO  
AMP\_MUTE

TO R-CH AMP.

TO L-CH AMP.

SP\_CTRL  
SP1  
SP2  
RELAY\_CTRL  
+12V  
OVER\_VALT  
OVER\_ZERO  
AMP\_MUTE

TO L-CH AMP.

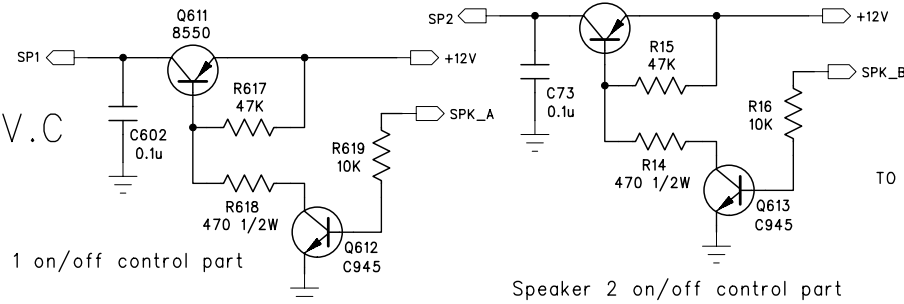


POWER SUPPLY BOARD

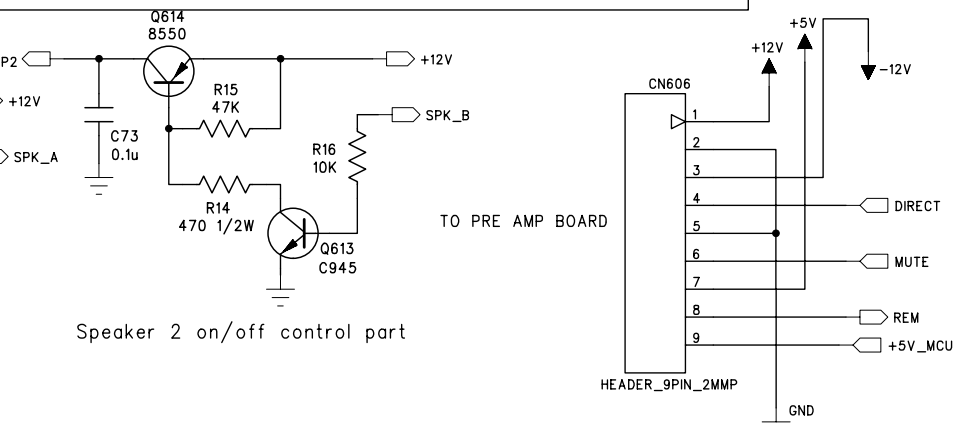
PCB: 4897-150070-001, REV.C

REMARK:

Speaker 1 on/off control part

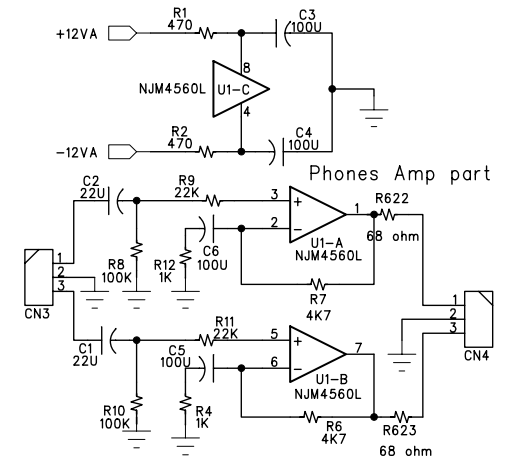


Speaker 2 on/off control part



TO PRE AMP BOARD

HEADER\_9PIN\_2MMP



PURPOSE: SAMPLE MAKING	PRODUCTION	<input checked="" type="checkbox"/> SHEET 1 OF 1	REV
PREPARED BY:	CHECKED BY:	APPROVED BY:	

6

5

4

3

2

1

D

C

B

A

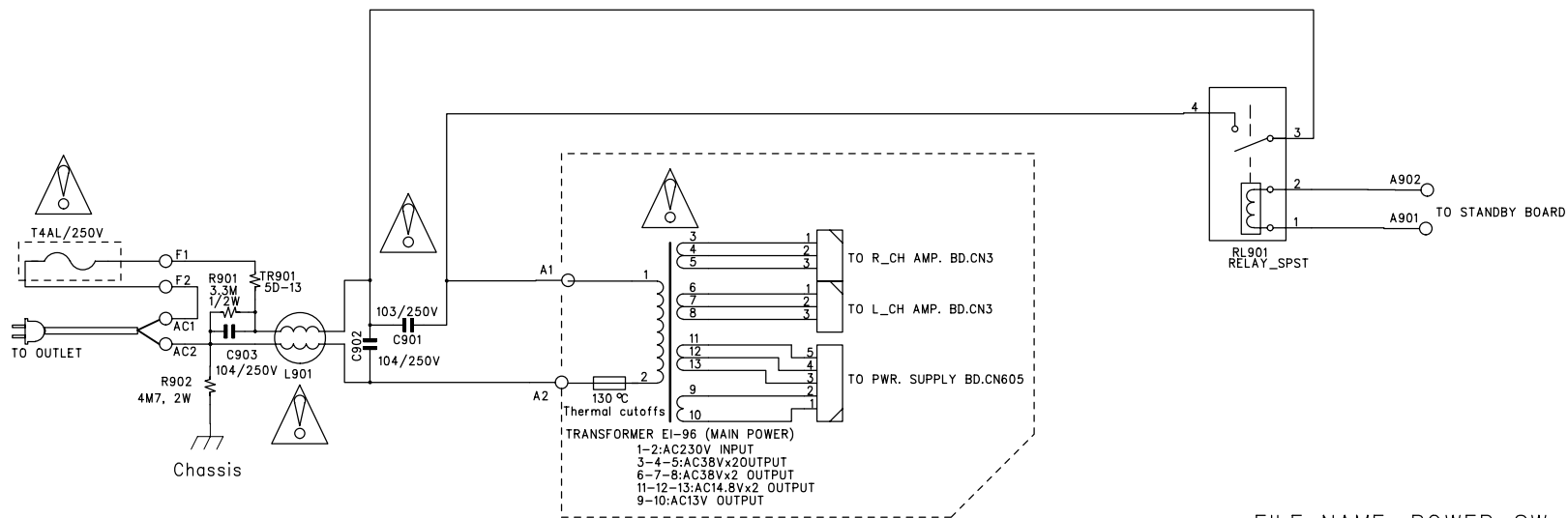
REVISION RECORD			
LTR	ECO NO:	APPROVED:	DATE:

D

C

B

A



FILE NAME: POWER\_SW\_HK970\_5.sch

REMARK:

- ADD R902 FOR ESD PROPOSE

POWER SWITCH BOARD

PCB: 4897-150070-101, REV.B

COMPANY:

TITLE:

HK970 POWER SWITCH

DRAWN:

DATED:

2005-JAN-07

CHECKED:

DATED:

QUALITY CONTROL:

DATED:

RELEASED:

DATED:

CODE:

SIZE:

DRAWING NO:

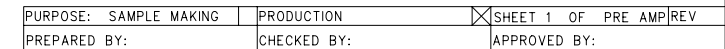
REV:

SCALE:

SHEET:

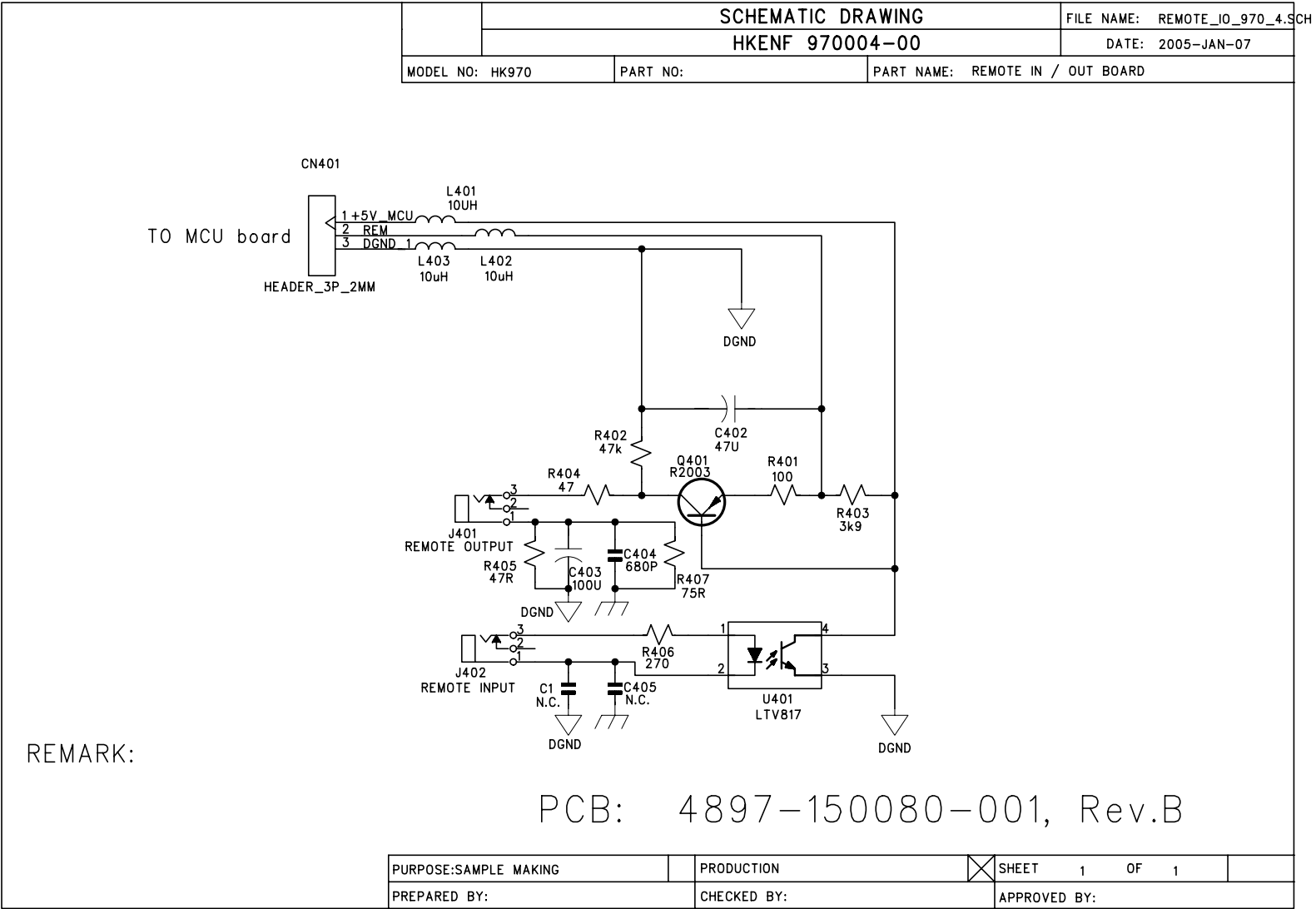
OF

Remark:

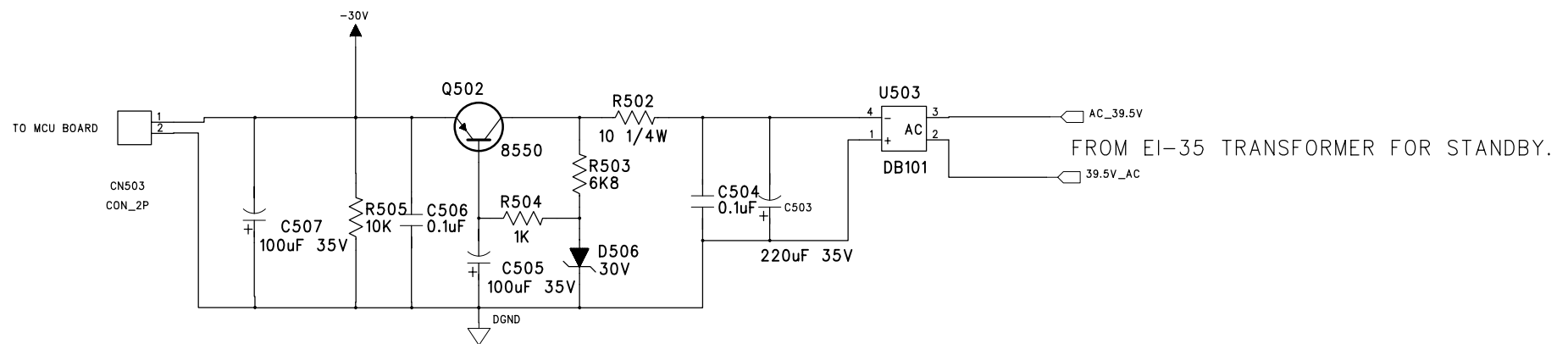








REVISION RECORD			
LTR	ECO NO:	APPROVED:	DATE:



-30 V REGULATING FOR VFD

File: standby\_board\_970\_13.sch

REMARK

- POWER IS -30V
- CHANGE VOLTAGE OF C507, C505 TO 35V

- CHANGE VOLTAGE OF C507, C505 TO 35V

PCB: 4897-150110-001

COMPANY:

TITLE:

# HK970 STANDBY POWER BOARD

DRAWN:	DATED:	HK970 STANDBY POWER BOARD			
	11-DEC-04				
CHECKED:	DATED:	CODE:	SIZE:	DRAWING NO:	REV:
QUALITY CONTROL:	DATED:				
RELEASED:	DATED:	SCALE:	SHEET: OF		

DATED:  
11-DEC-04

11-DEC-04

CHECKED:

DATED:

QUALITY CONTROL:

DATED:

RELEASED:

DATED:

SCALE:

SHEET:	OF
--------	----

6

5

4

3

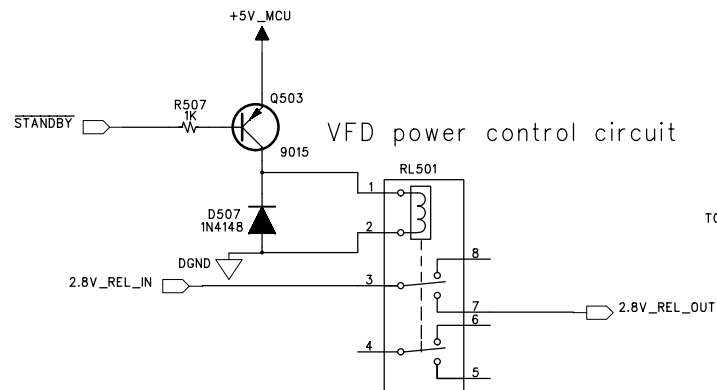
2

1

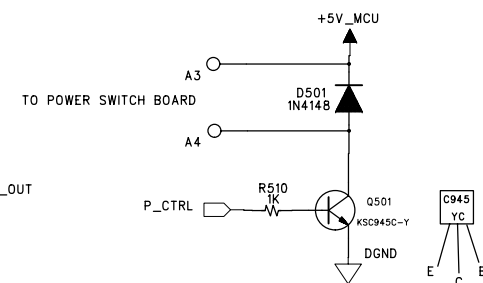
REMARK:

## REVISION RECORD

LTR	ECO NO:	APPROVED:	DATE:

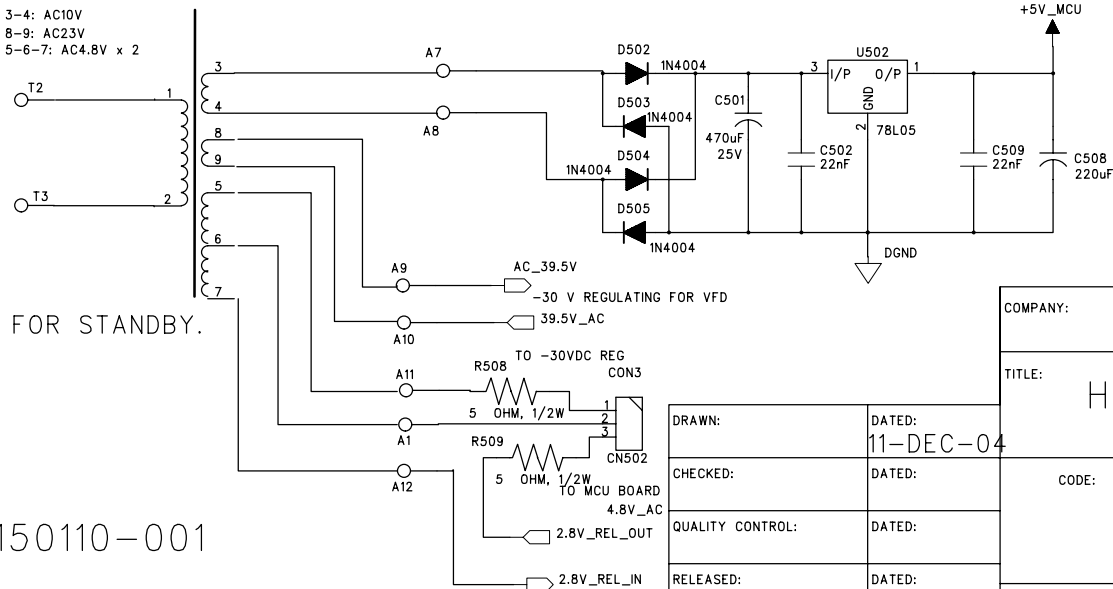


Primary power control circuit



1-2: INPUT AC230V  
OUTPUT  
3-4: AC10V  
8-9: AC23V  
5-6-7: AC4.8V x 2

&gt;From AC Supply



EI-35 TRANSFORMER FOR STANDBY.

PCB: 4897-150110-001

FILE: standby\_board\_970\_13.sch

COMPANY:

TITLE:

HK970 Standby Power Board

DRAWN:	DATED:
CHECKED:	DATED:
QUALITY CONTROL:	DATED:
RELEASED:	DATED:

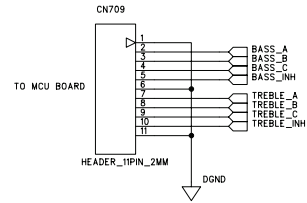
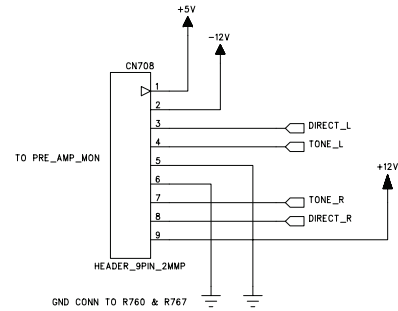
CODE:	SIZE:	DRAWING NO:	REV:
SCALE:		SHEET: OF	

D

C

B

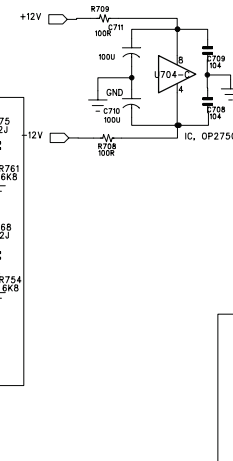
A



REMARK:

Treble Level Selection of Right channel.

Treble Level Selection of Left channel.



Bass Level Selection of Right channel.

Bass Level Selection of Left channel.

FILE NAME: TONE\_CONTROL\_970\_18.SCH

P/N: 4897-150560-001, Rev.F

DRAWN:	DATED:
CHECKED:	DATED:
QUALITY CONTROL:	DATED:
RELEASED:	DATED:

COMPANY:			
TITLE:			
HK970 TONE CONTROL BOARD			
CODE:	SIZE:	DRAWING NO:	REV:
SCALE:	SHEET: OF		

REVISION RECORD			
LTR	ECO NO:	APPROVED:	DATE:

