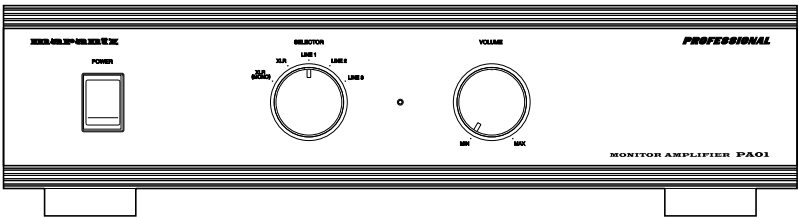


Service Manual

PA01 /F1S

Monitor Amplifier



PA01

TABLE OF CONTENTS

SECTION	PAGE
1. TECHNICAL SPECIFICATIONS	1
2. ALIGNMENTS	2
3. BLOCK DIAGRAMS	3
4. SCHEMATIC DIAGRAM AND PARTS LOCATION	4
5. EXPLODED VIEW AND PARTS LIST	13
6. ELECTRICAL PARTS LIST	16

Please use this service manual with referring to the user guide (D.F.U.) without fail.
修理の際は、必ず取扱説明書を準備し操作方法を確認の上作業を行ってください。

marantz®

MARANTZ DESIGN AND SERVICE

Using superior design and selected high grade components, **MARANTZ** company has created the ultimate in stereo sound. Only original **MARANTZ** parts can insure that your **MARANTZ** product will continue to perform to the specifications for which it is famous.

Parts for your **MARANTZ** equipment are generally available to our National Marantz Subsidiary or Agent.

ORDERING PARTS :

Parts can be ordered either by mail or by Fax.. In both cases, the correct part number has to be specified.

The following information must be supplied to eliminate delays in processing your order :

1. Complete address
2. Complete part numbers and quantities required
3. Description of parts
4. Model number for which part is required
5. Way of shipment
6. Signature : any order form or Fax. must be signed, otherwise such part order will be considered as null and void.

USA

MARANTZ AMERICA, INC.
1100 MAPLEWOOD DRIVE
ITASCA, IL. 60143
USA
PHONE : 630 - 741 - 0300
FAX : 630 - 741 - 0301

EUROPE / TRADING

MARANTZ EUROPE B.V.
P.O.BOX 80002, BUILDING SFF2
5600 JB EINDHOVEN
THE NETHERLANDS
PHONE : +31 - 40 - 2732241
FAX : +31 - 40 - 2735578

BRAZIL

PHILIPS DA AMAZONIA IND. ELET. ITDA
CENTRO DE INFORMACOES AO
CEP 04698-970
SAO PAULO, SP, BRAZIL
PHONE : 0800 - 123123(Discagem Direta Gratuita)
FAX : +55 11 534. 8988

PROFESSIONAL AMERICAS

SUPERSCOPE TECHNOLOGIES, INC.
MARANTZ PROFESSIONAL PRODUCTS
2640 WHITE OAK CIRCLE, SUITE A
AURORA, ILLINOIS 60504 USA
PHONE : 630 - 820 - 4800
FAX : 630 - 820 - 8103

PROFESSIONAL AUSTRALIA

TECHNICAL AUDIO GROUP PTY, LTD
558 DARLING STREET,
BALMAIN, NSW 2041,
AUSTRALIA
PHONE : 61 - 2 - 9810 - 5300
FAX : 61 - 2 - 9810 - 5355

CANADA

LENBROOK INDUSTRIES LIMITED
633 GRANITE COURT,
PICKERING, ONTARIO L1W 3K1
CANADA
PHONE : 905 - 831 - 6333
FAX : 905 - 831 - 6936

AUSTRALIA

QualiFi Pty Ltd,
24 LIONEL ROAD,
MT. WAVERLEY VIC 3149
AUSTRALIA
PHONE : +61 - (0)3 - 9543 - 1522
FAX : +61 - (0)3 - 9543 - 3677

THAILAND

MRZ STANDARD CO.,LTD
746 - 754 MAHACHAI ROAD.,
WANGBURAPAPIROM, PHRANAKORN,
BANGKOK, 10200 THAILAND
PHONE : +66 - 2 - 222 9181
FAX : +66 - 2 - 224 6795

SINGAPORE

WO KEE HONG DISTRIBUTION PTE LTD
130 JOO SENG ROAD
#03-02 OLIVINE BUILDING
SINGAPORE 368357
PHONE : +65 858 5535 / +65 381 8621
FAX : +65 858 6078

NEW ZEALAND

WILDASH AUDIO SYSTEMS NZ
14 MALVERN ROAD MT ALBERT
AUCKLAND NEW ZEALAND
PHONE : +64 - 9 - 8451958
FAX : +64 - 9 - 8463554

TAIWAN

PAI- YUING CO., LTD.
6 TH FL NO, 148 SUNG KIANG ROAD,
TAIPEI, 10429, TAIWAN R.O.C.
PHONE : +886 - 2 - 25221304
FAX : +886 - 2 - 25630415

MALAYSIA

WO KEE HONG ELECTRONICS SDN. BHD.
SUITE 8.1, LEVEL 8, MENARA GENESIS,
NO. 33, JALAN SULTAN ISMAIL,
50250 KUALA LUMPUR, MALAYSIA
PHONE : +60 3 - 2457677
FAX : +60 3 - 2458180

JAPAN Technical

MARANTZ JAPAN, INC.
35- 1, 7- CHOME, SAGAMIONO
SAGAMIHARA - SHI, KANAGAWA
JAPAN 228-8505
PHONE : +81 42 748 1013
FAX : +81 42 741 9190

日本マランツ株式会社

本 社 〒228-8505
神奈川県相模原市相模大野7-35-1
営業本部 〒150-0022
東京都渋谷区恵比寿南1-11-9

KOREA

MK ENTERPRISES LTD.
ROOM 604/605, ELECTRO-OFFICETEL, 16-58,
3GA, HANGANG-RO, YONGSAN-KU, SEOUL
KOREA
PHONE : +822 - 3232 - 155
FAX : +822 - 3232 - 154

SHOCK, FIRE HAZARD SERVICE TEST :

CAUTION : After servicing this appliance and prior to returning to customer, measure the resistance between either primary AC cord connector pins (with unit NOT connected to AC mains and its Power switch ON), and the face or Front Panel of product and controls and chassis bottom.

Any resistance measurement less than 1 Megohms should cause unit to be repaired or corrected before AC power is applied, and verified before it is return to the user/customer.

Ref. UL Standard No. 813.

In case of difficulties, do not hesitate to contact the Technical
Department at above mentioned address.

1. TECHNICAL SPECIFICATIONS

仕 様

定格出力（両 ch 同時駆動）..... 100W × 2（8 Ω 負荷）
160W × 2（4 Ω 負荷）

全高調波歪率（両 ch 駆動、8 Ω 負荷）..... 0.07 %

出力帯域幅（8 Ω 負荷、50W）..... 10 Hz ~ 160 kHz

周波数特性 5 Hz ~ 240 kHz + 0, -1 dB

入力感度／入力インピーダンス

HIGH LEVEL 0 dBV (0.775 V) / 10 kΩ

S/N 比（IHF A ネットワーク、入力ショート）

HIGH LEVEL 115 dB

電源電圧 AC 100 V, 50 Hz/60 Hz

消費電力（電気用品安全法）..... 260 W

最大外形寸法

幅 435 mm

高さ 116 mm

奥行き 414 mm

質 量 11.8 kg

2. ALIGNMENTS

調整手順

1. POWER ON する前に、出力段アイドリング調整 VR(R193, R194) を反時計方向に廻しきっておきます。

2. POWER ON 直後（1 分以内）に出力段のアイドリングとオフセット仮調整を行います。

	VR	TEST POINT	アジャスト電圧
出力段アイドリング調整 Lch	R193	T101	10mV±0.5mV
出力段アイドリング調整 Rch	R194	T102	10mV±0.5mV
出力段オフセット調整 Lch	R191	T103	0mV±10mV
出力段オフセット調整 Rch	R192	T104	0mV±10mV

3. 電圧増幅段の電流とオフセット仮調整を行います。

	VR	TEST POINT	アジャスト電圧
電圧増幅段電流調整 Lch +	R793	T701	0.7V±0.05V
電圧増幅段電流調整 Lch -	R791	T703	0.7V±0.05V
電圧増幅段オフセット調整 Lch	R793	T705	0mV±1V
電圧増幅段電流調整 Rch +	R794	T702	0.7V±0.05V
電圧増幅段電流調整 Rch -	R792	T704	0.7V±0.05V
電圧増幅段オフセット調整 Rch	R794	T706	0mV±1V



4. トップカバーをかけた状態でスピーカターミナルに 8Ω 負荷を接続し、1kHz 正弦波 5W 出力 (6.3V) にて 15 分間ヒートランを行います。



5. 出力段のアイドリング調整とオフセット調整を行います。

	VR	TEST POINT	アジャスト電圧
出力段アイドリング調整 Lch	R193	T101	9mV±0.2mV
出力段アイドリング調整 Rch	R193	T102	9mV±0.2mV
出力段オフセット調整 Lch	R191	T103	測定値の 1/2 (注 1)
出力段オフセット調整 Rch	R192	T104	測定値の 1/2 (注 1)

(注 1) 例えば、ヒートラン後のオフセットが+ 120mV の場合は+ 60mV にアジャストし、
- 88mV の場合は- 44mV にアジャストします。偏差は±10mV 以内とします。
(+- は、絶対に間違わないでください)

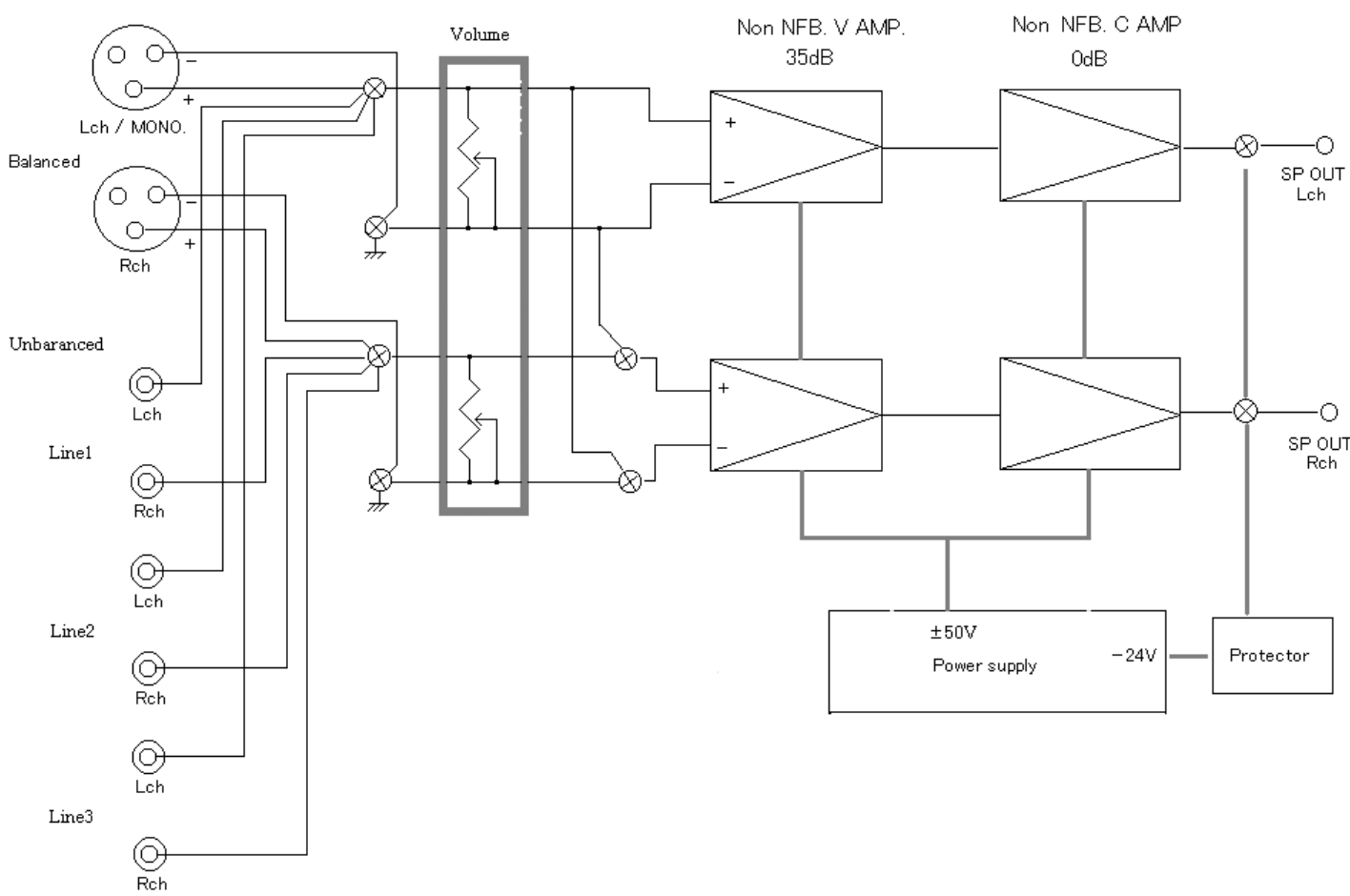
6. 電圧増幅段の電流とオフセット調整を行います。

	VR	TEST POINT	アジャスト電圧
電圧増幅段電流調整 Lch +	R793	T701	0.68V±0.02V
電圧増幅段電流調整 Lch -	R791	T703	0.68V±0.02V
電圧増幅段オフセット調整 Lch	R793	T105	0V±0.5V
電圧増幅段電流調整 Rch +	R794	T702	0.68V±0.02V
電圧増幅段電流調整 Rch -	R792	T704	0.68V±0.02V
電圧増幅段オフセット調整 Rch	R794	T706	0V±0.5V

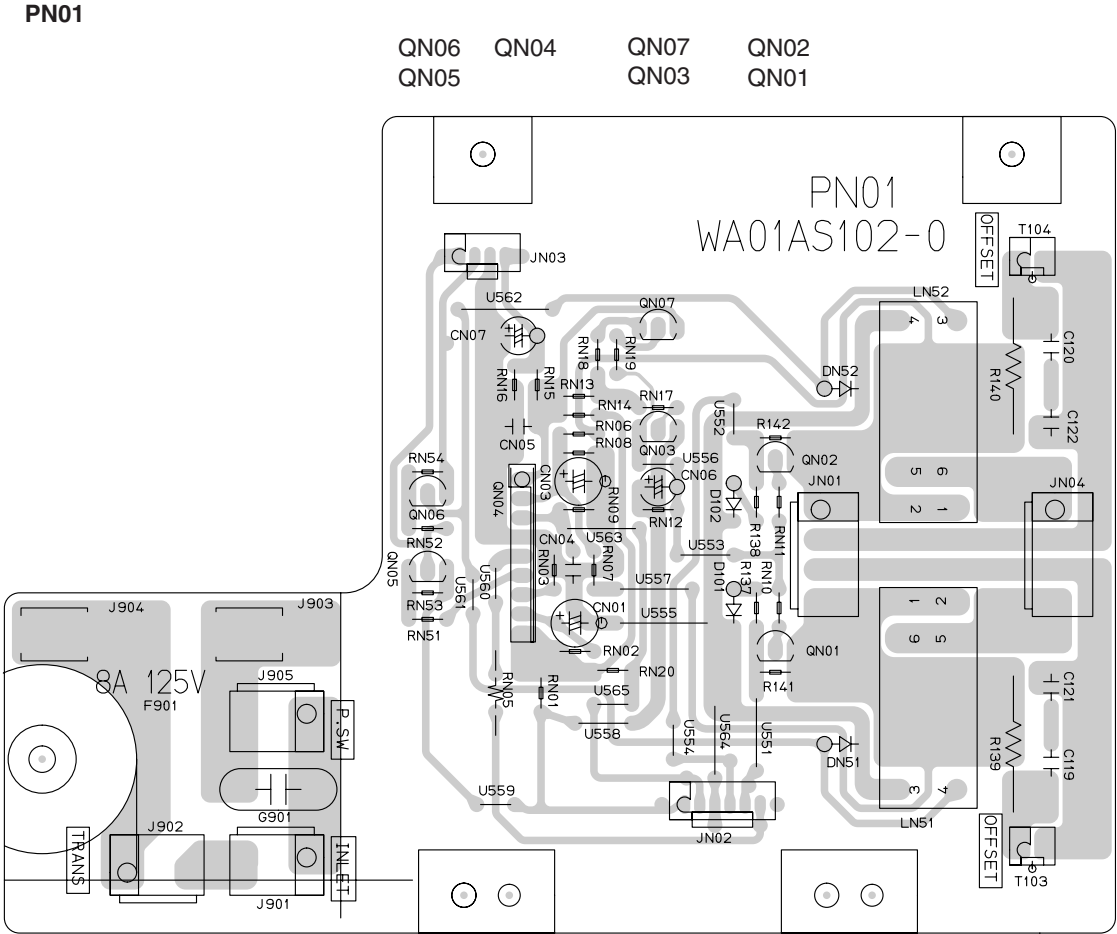
各テストポイント端子の極性：①ピン：テスターの+側、②ピン：テスターの-側

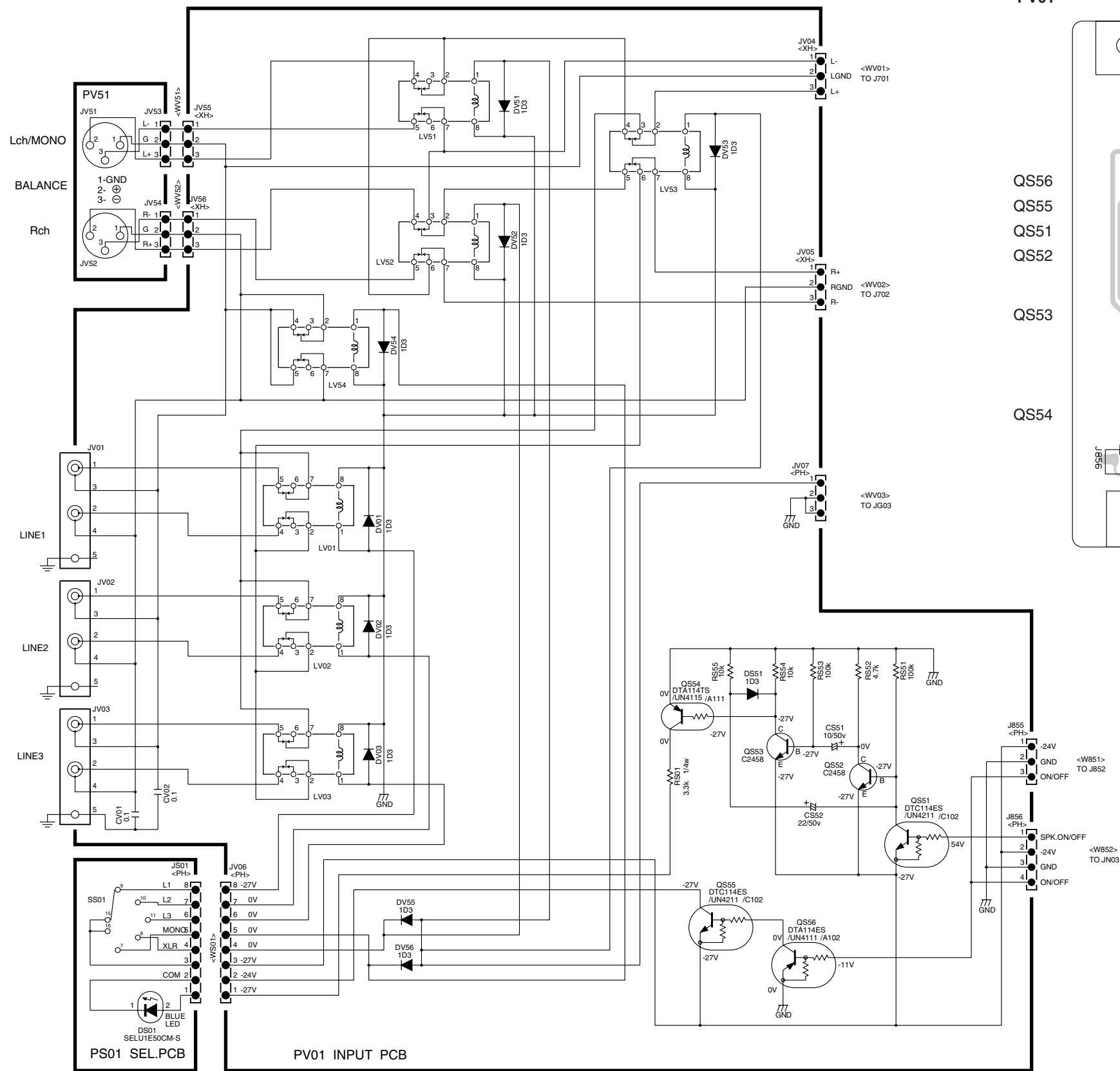
治具：コネクター付延長ケーブル（番号：* PA02IDLJG）

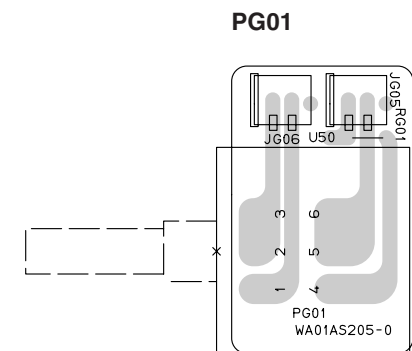
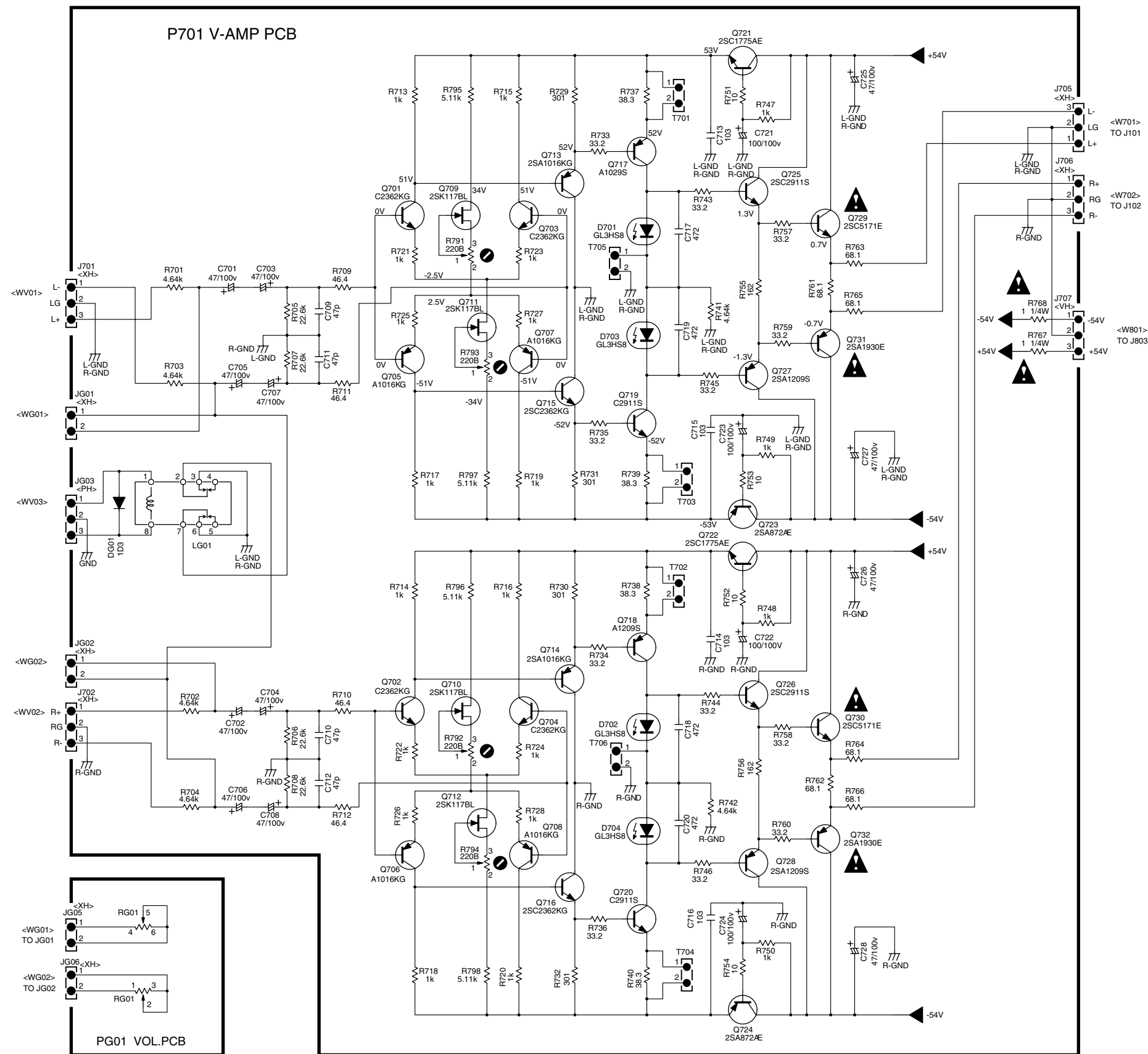
3. BLOCK DIAGRAM

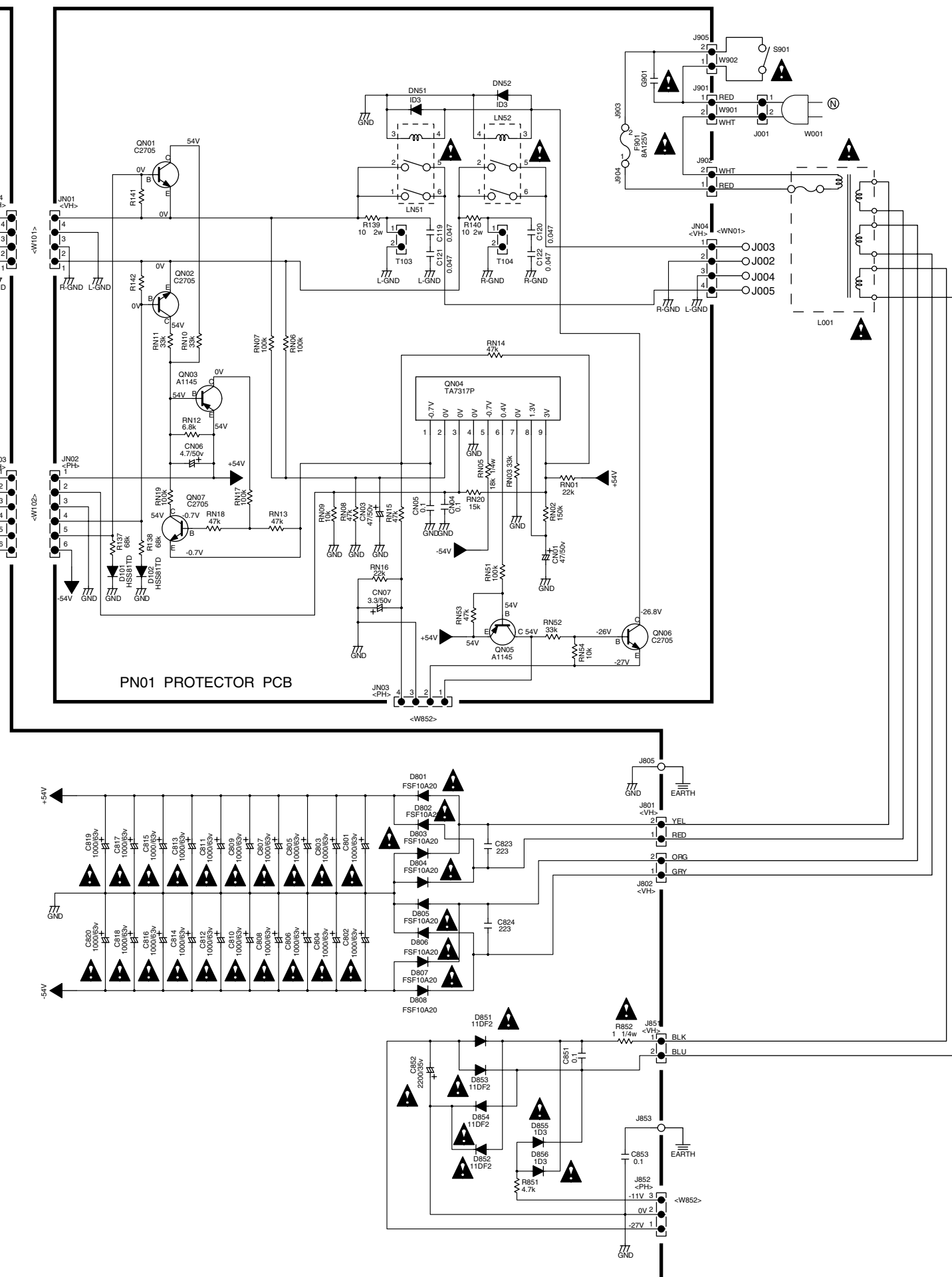
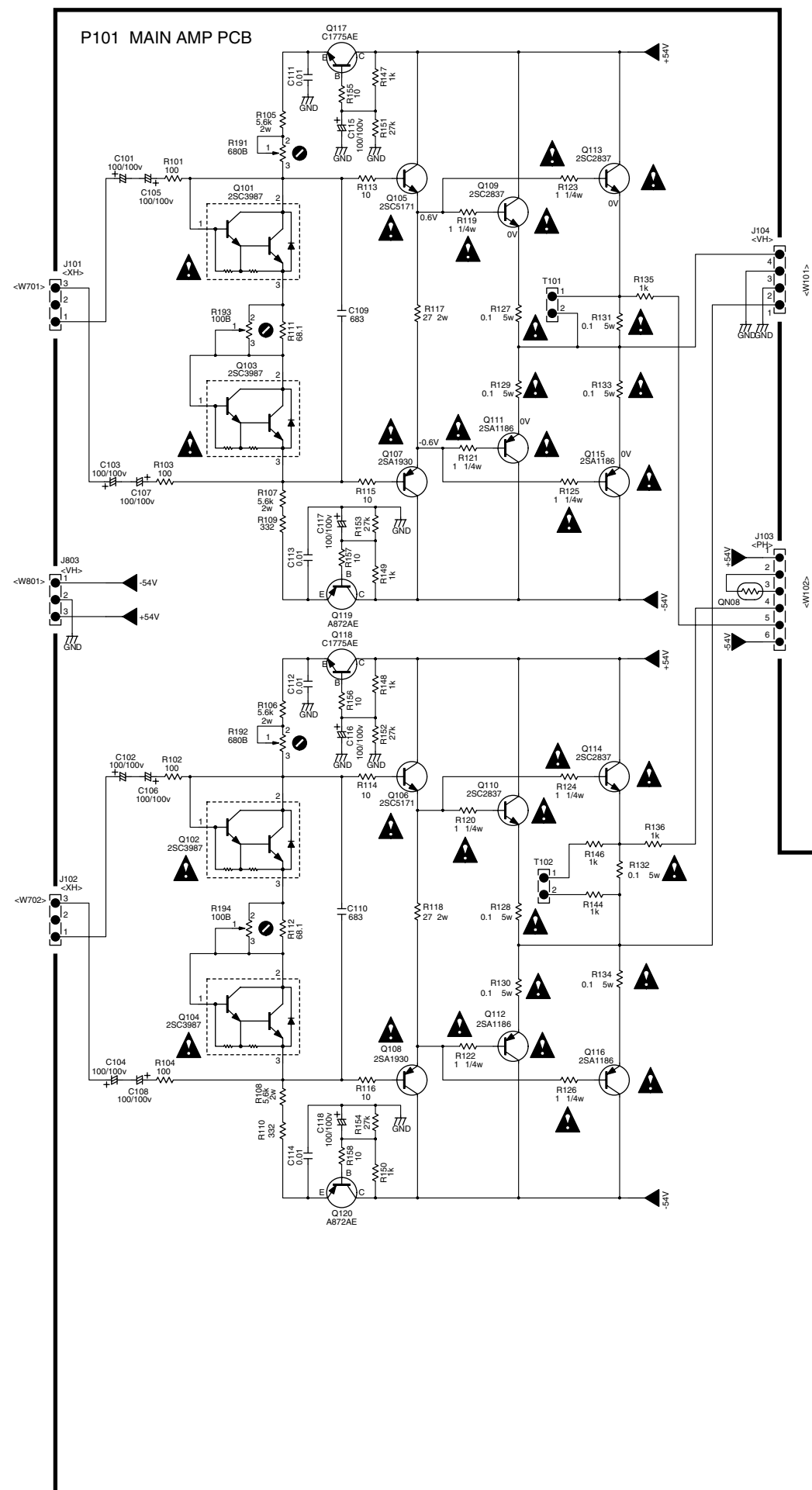


4. SCHEMATIC DIAGRAM AND PARTS LOCATION

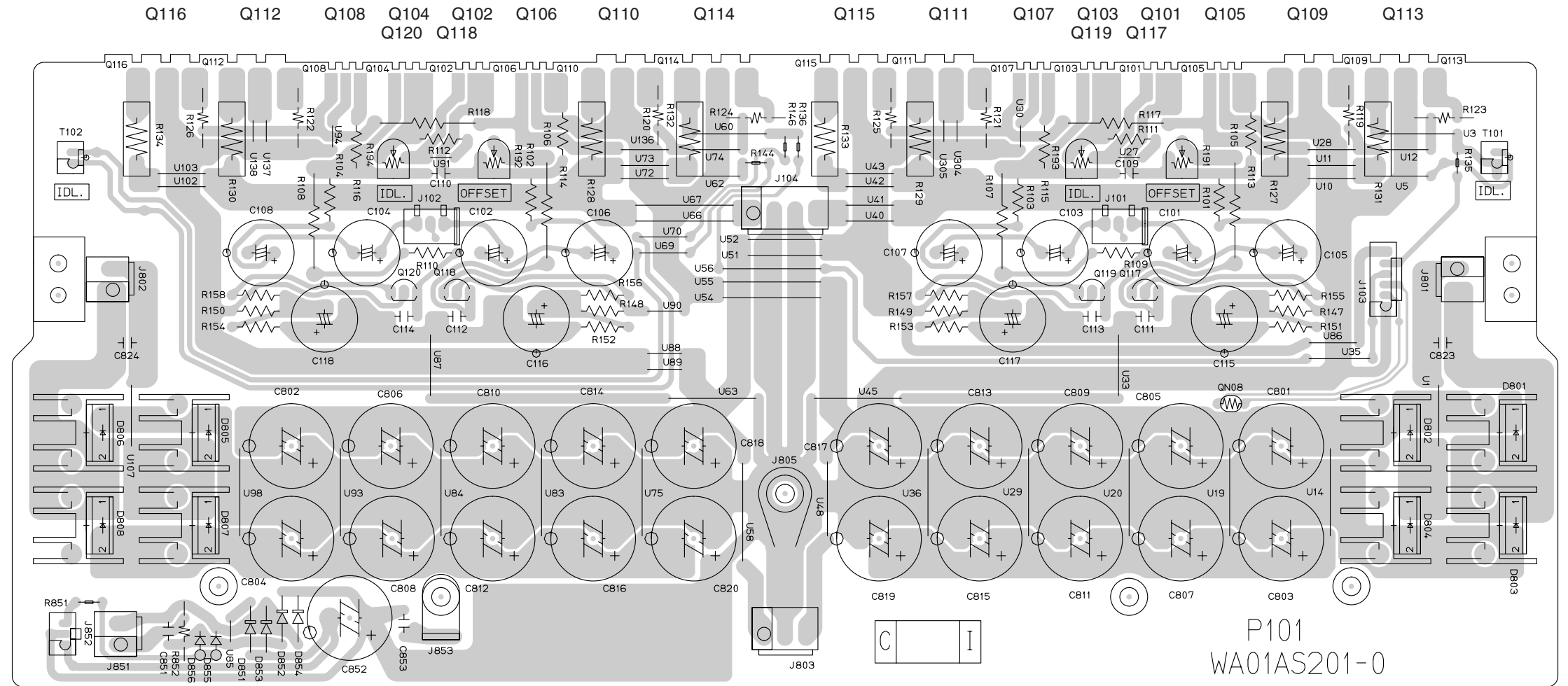






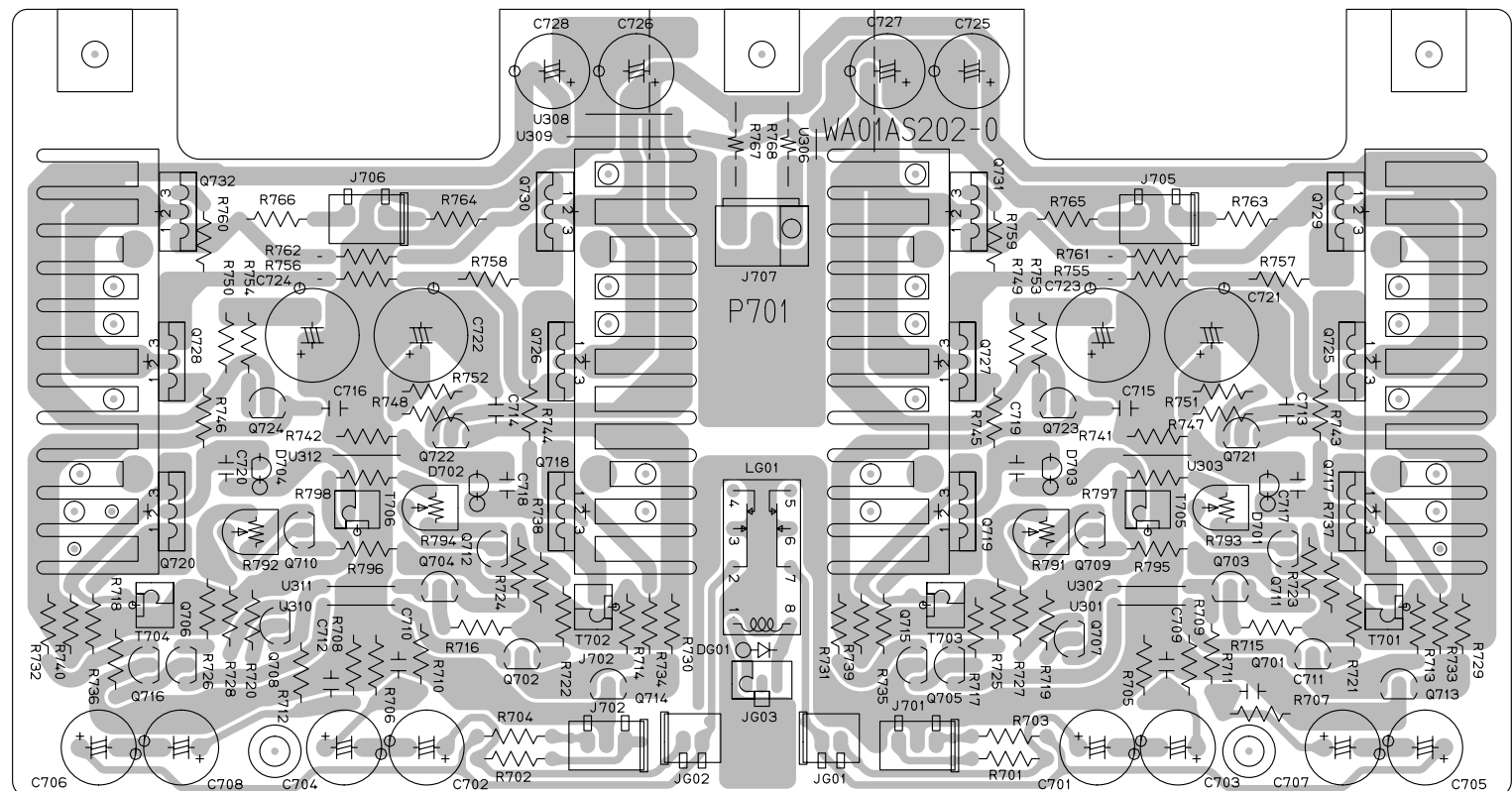


P101

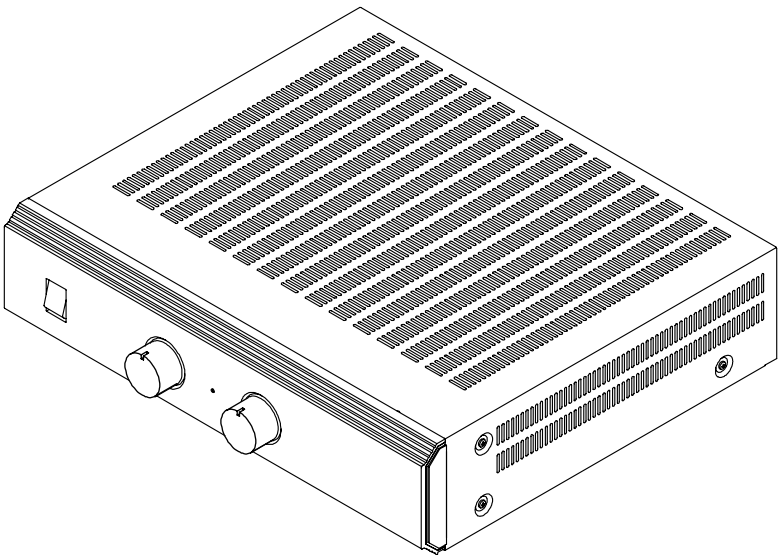


P701

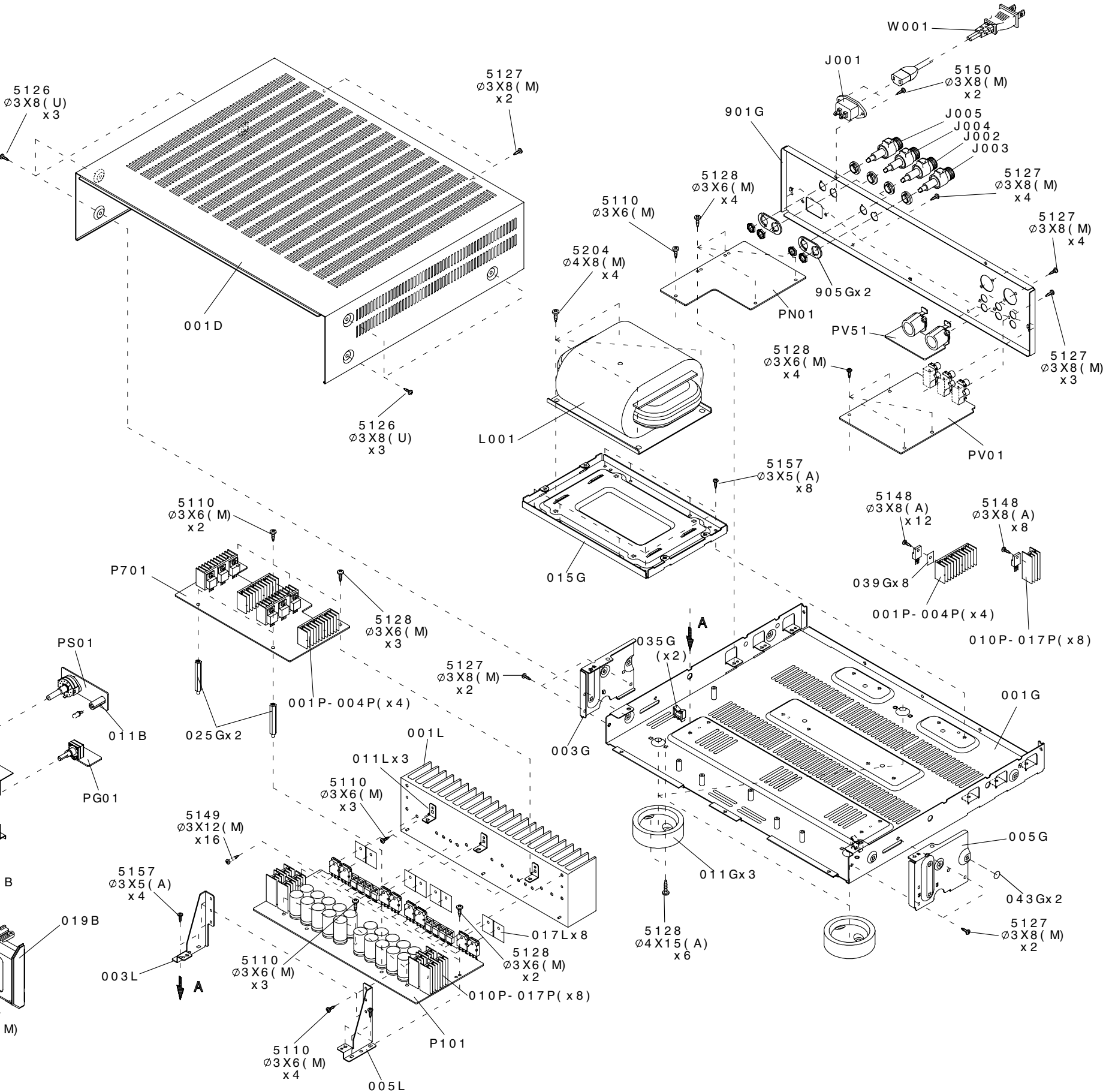
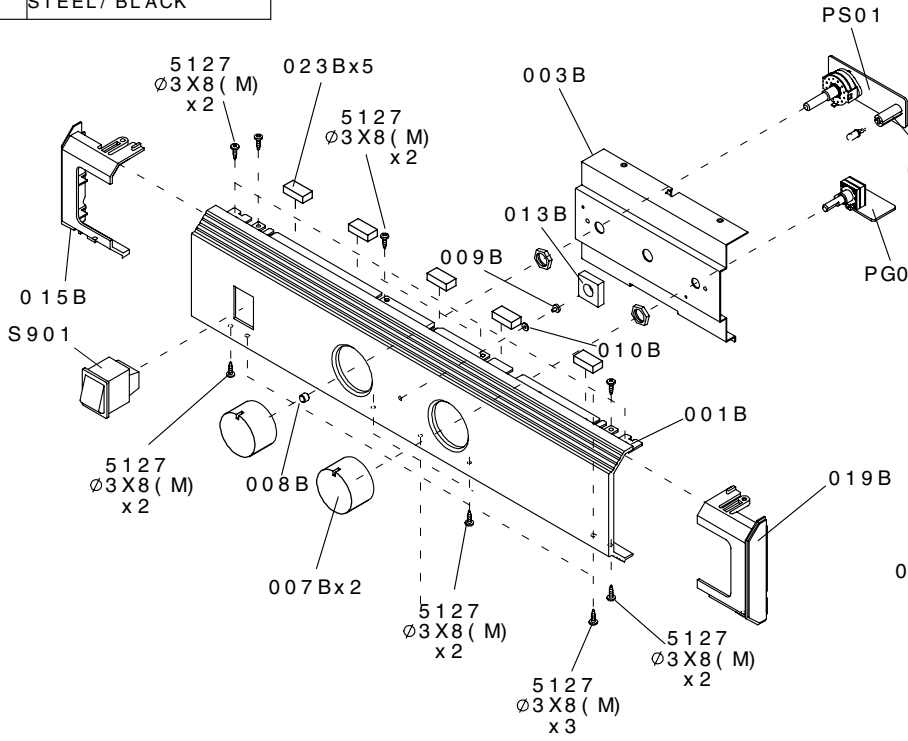
Q732 Q728 Q724 Q722 Q730 Q726 Q731 Q727 Q723 Q721 Q729 Q725
Q720 Q710 Q712 Q718 Q719 Q709 Q711 Q717
Q716 Q706 Q708 Q704 Q702 Q714 Q715 Q705 Q707 Q703 Q701 Q713



5. EXPLODED VIEW AND PARTS LIST



SYMBOL	STYLE	PARTS NAME
5110		+B. H. M. SCREW
5126		+B. H. T. AP TITE SCREWW/WASHER
5127		+B. H. TAP TITE SCREW(W)
5128		+B. H. TAP TITE SCREW(B TYPE)
5149		+B. H. M. SCREW W/WASHER/ SPRING
5150		+F. H. TAP TITE SCREW(B TYPE)
5157		+P. H. TAP TITE SCREW(S TYPE)
5204		+H. H. TAPT. BOLTS WITH FLANGE(S TITE)
MARK	MATERI AL/ FI NI SH	
(A)	STEEL/ CHROMATE	
(U)	STEEL/ BLACK	



POS. NO	VERS. COLOR	PART NO. (PCS)	DESCRIPTION	PART NO. (MJI)
001B			FRONT PANEL	01AS248010
003B			FRONT CHASSIS	nsp
007B			KNOB	01AS154010
008B			SPACER FOR SELECTOR	nsp
009B			LENS	238H355020
010B			STICKER WASHER FOR LENS	nsp
011B			LED SPACER	nsp
013B			BUFFER FOR LED	nsp
015B			SIDE L	01AS067010
019B			SIDE R	01AS067020
023B			BUFFER FOR LID	nsp
001D			LID	nsp
001G			MAIN CHASSIS	nsp
003G			FRONT BRACKET L	nsp
005G			FRONT BRACKET R	nsp
011G			LEG	288S057120
015G			TRANSF. CHASSIS	nsp
025G			SUPPORT FOR P701	nsp
035G			CABLE CLAMPER	nsp
039G			INSULATOR FOR TR	01AS120020
041G			BUFFER FOR RG01	01AS056020
043G			SHEET FOR 003G, 005G	nsp
901G			REAR PANEL	nsp
905G			SPACER FOR SPK TERMINAL	nsp
001L			HEAT SINK	nsp
003L			HEAT SINK BRACKET	nsp
005L			HEAT SINK BRACKET	nsp
011L			RETAINER	nsp
017L		4822 466 62033	INSULATOR FOR TR	242H120020
▲ J001			JACK AC INLET HF-301	YJ04002550
J002			TERMINAL SPK.TERMINAL WBT-0785 WHT	YT01010770
J003			TERMINAL SPK.TERMINAL WBT-0785 RED	YT01010780
J004			TERMINAL SPK.TERMINAL WBT-0785 WHT	YT01010770
J005			TERMINAL SPK.TERMINAL WBT-0785 RED	YT01010780
▲ L001			MAINS TRANSF. R400 CORE	TS84001010
▲ S901			MAINS SWITCH JW-L11RKK	SC01010580
▲ W001			MAINS CORD CORDSET FOR F OFC 2P 15A	ZC01803130
001T			PACKING USER GUIDE	01AS851110
001S			NOT STANDARD SPARE PARTS PACKING CASE	01AS801010
003S			CUSHION UPPER	01AS809010
005S			CUSHION BOTTOM	01AS809020

NOTE : "nsp" PART IS LISTED FOR REFERENCE ONLY, MARANTZ WILL NOT SUPPLY THESE PARTS.

6. ELECTRICAL PARTS LIST

ASSIGNMENT OF COMMON PARTS CODES.

RESISTORS

R***: 1) GD05 × × × 140, Carbon film fixed resistor, ±5% 1/4W
 R***: 2) GD05 × × × 160, Carbon film fixed resistor, ±5% 1/6W

① — Resistance value

Examples ;

① Resistance value

0.1 Ω 001 10 Ω 100 1 kΩ 102 100 kΩ 104
 0.5 Ω 005 18 Ω 180 2.7 kΩ 272 680 kΩ 684
 1 Ω 010 100 Ω 101 10 kΩ 103 1 MΩ 105
 6.8 Ω 068 390 Ω 391 22 kΩ 223 4.7 MΩ 475

Note : Please distinguish 1/4W from 1/6W by the shape of parts used actually.

CAPACITORS

C***: CERAMIC CAP.

3) DD1 × × × × 370, Ceramic capacitor
 Disc type
 Temp.coeff.P350 ~ N1000, 50V
 ② — Capacity value
 ③ — Tolerance

Examples ;

② Tolerance (Capacity deviation)

±0.25 pF 0
 ±0.5 pF 1
 ±5% 5

* Tolerance of COMMON PARTS handled here are as follows :

0.5 pF ~ 5 pF ±0.25 pF
 6 pF ~ 10 pF ±0.5 pF
 12 pF ~ 560 pF ±5%

③ Capacity value

0.5 pF 005 3 pF 030 100 pF 101
 1 pF 010 10 pF 100 220 pF 221
 1.5 pF 015 47 pF 470 560 pF 561

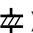
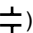
C***: CERAMIC CAP.

4) DK16 × × × 300, High dielectric constant ceramic capacitor
 Disc type
 Temp.chara. 2B4, 50V
 ④ — Capacity value

Examples ;

④ Capacity value

100 pF 101 1000 pF 102 10000 pF 103
 470 pF 471 2200 pF 222

C***: 5) ELECTROLY CAP. (), 6) FILM CAP. ()

5) EA × × × × × 10, Electrolytic capacitor
 One-way lead type, Tolerance ±20%
 ⑤ — Working voltage
 ⑥ — Capacity value

Examples ;

⑤ Capacity value

0.1 μF 104 4.7 μF 475 100 μF 107
 0.33 μF 334 10 μF 106 330 μF 337
 1 μF 105 22 μF 226 1100 μF 118
 2200 μF 228

⑥ Working voltage

6.3V 006 25V 025
 10V 010 35V 035
 16V 016 50V 050

6) DF15 × × × 350 — Plastic film capacitor
 DF15 × × × 310 — One-way type, Mylar ±5% 50V
 DF16 × × × 310 — Plastic film capacitor
 One-way type, Mylar ±10% 50V
 ⑦ — Capacity value

Examples ;

⑦ Capacity value

0.001 μF (1000 pF) 102 0.1 μF 104
 0.0018 μF 182 0.56 μF 564
 0.01 μF 103 1 μF 105
 0.015 μF 153

NOTE : 1) The above CODES (R***, R***, C***, C*** and C***) are omitted on the schematic diagram in some case.

2) On the occasion, be confirmed the common parts on the parts list.

3) Refer to "Common Parts List" for the other common parts (R105, DD4, DK4).

NOTE ON SAFETY FOR FUSIBLE RESISTOR :

The suppliers and their type numbers of fusible resistors are as follows;

1. KOA Corporation

Part No. (MJI)	Type No. (KOA)	Description
NH05 × × × 140	RF25S × × × ΩJ	(±5% 1/4W)
NH05 × × × 120	RF50S × × × ΩJ	(±5% 1/2W)
NH85 × × × 110	RF73B2A × × × ΩJ	(±5% 1/10W)
NH95 × × × 140	RF73B2E × × × ΩJ	(±5% 1/4W)

* Resistance value Resistance value
 (0.1 Ω – 10 kΩ)

2. Matsushita Electronic Components Co., Ltd

Part No. (MJI)	Type No. (MEC)	Description
NF05 × × × 140	ERD-2FCJ × × ×	(±5% 1/4W)
RF05 × × × 140		
NF02 × × × 140	ERD-2FCG × × ×	(±2% 1/4W)
RF02 × × × 140		

* Resistance value * Resistance value

Examples ;

* Resistance value

0.1 Ω 001 10 Ω 100 1 kΩ 102 100 kΩ 104
 0.5 Ω 005 18 Ω 180 2.7 kΩ 272 680 kΩ 684
 1 Ω 010 100 Ω 101 10 kΩ 103 1 MΩ 105
 6.8 Ω 068 390 Ω 391 22 kΩ 223 4.7 MΩ 475



ABBREVIATION AND MARKS

ANT. : ANTENNA	BATT. : BATTERY
CAP. : CAPACITOR	CER. : CERAMIC
CONN. : CONNECTING	DIG. : DIGITAL
HP : HEADPHONE	MIC. : MICROPHONE
μ-PRO : MICROPROCESSOR	REC. : RECORDING
RES. : RESISTOR	SPK : SPEAKER
SW : SWITCH	TRANSF. : TRANSFORMER
TRIM. : TRIMMING	TRS. : TRANSISTOR
VAR. : VARIABLE	X'TAL : CRYSTAL


NOTE ON FUSE :

Regarding to all parts of parts code **FS20xxx2xx**, replace only with Wickmann-Werke GmbH, Type 372 non glass type fuse.

NOTE ON SAFETY :

Symbol  Fire or electrical shock hazard. Only original parts should be used to replaced any part marked with symbol  . Any other component substitution (other than original type), may increase risk of fire or electrical shock hazard.

安全上の注意 :

 がついている部品は、安全上重要な部品です。必ず指定されている部品番号の部品を使用して下さい。

POS. NO	VERS. COLOR	PART NO. (PCS)	DESCRIPTION	PART NO. (MJI)	POS. NO	VERS. COLOR	PART NO. (PCS)	DESCRIPTION	PART NO. (MJI)
			P101-MAIN AMP CIRCUIT BOARD P101-CAPACITORS					P101-SEMICONDUCTORS	
C101 }		4822 124 80771	ELECT 100μF M 100V RA-2	OA10710020	▲ D801 }			DIODE FSF10A20	HD20056100
C108 C109			FILM 0.063μF ±5% 100V	OF55683540	▲ D808 }			DIODE 11DF2 1A 200V FRD	HD20057100
C110 C111 }			FILM 0.063μF ±5% 100V	OF55683540	▲ D851 }				
C114 C115 }			FILM 0.01μF ±5% 100V	OF55103540	▲ D854 ▲ D855 ▲ D856		4822 130 82421 4822 130 82421	DIODE 1D3 1A/200V DIODE 1D3 1A/200V	HD20002710 HD20002710
C118 }		4822 124 80771	ELECT 100μF M 100V RA-2	OA10710020	▲ Q101 }			TRS. 2SC3987	HT33987000 HT33987000
▲ C801 }			ELECT 1000μF M 63V RA-2	OA10806320	▲ Q104 ▲ Q105 ▲ Q106 ▲ Q107 ▲ Q108 ▲ Q109 ▲ Q110 ▲ Q111 ▲ Q112 ▲ Q113 ▲ Q114 ▲ Q115 ▲ Q116			TRS. 2SC5171 TRS. 2SC5171 TRS. 2SA1930 TRS. 2SA1930 TRS. 2SC2837 Y TRS. 2SC2837 Y TRS. 2SA1186 Y TRS. 2SA1186 Y TRS. 2SC2837 Y TRS. 2SC2837 Y TRS. 2SA1186 Y TRS. 2SA1186 Y TRS. 2SA1186 Y TRS. 2SC1775A E TRS. 2SC1775A E TRS. 2SA872A E TRS. 2SA872A E VARISTOR PTH59F04BF222TS	HT35171000 HT35171000 HT11930000 HT11930000 HT328371C0 HT328371C0 HT111861C0 HT111861C0 HT328371C0 HT328371C0 HT111861C0 HT111861C0 HT111861C0 HT317751E0 HT317751E0 HT108721E0 HT108721E0 HP00015230
▲ C820 C823 C824 C851 ▲ C852 C853		4822 124 22695	FILM 0.022μF ±5% 100V FILM 0.022μF ±5% 100V CER. 0.1μF +80 -20% 50V ELECT 2200μF M 35V RA-2 CER. 0.1μF +80 -20% 50V	OF55223540 OF55223540 DD38104040 OA22803520 DD38104040	Q117 Q118 Q119 Q120 QN08		4822 130 43192 4822 130 43192 4822 130 43617 4822 130 43617		
			P101-RESISTORS					P701-VOLTAGE AMP CIRCUIT BOARD P701-CAPACITORS	
R101 }			100 Ω ±1% 1/4W	GM11410000	C701 }			ELECT 47μF M 100V RA-2	OA47610020
R104 R105 }		4822 116 51135	5.6k Ω ±5% 2W	GA05562020	C708 C709 }		4822 123 30086	MICA 47pF J 500V	DF35470520
R108 R109 R110 R111 R112 R113 }			332 Ω ±1% 1/4W 332 Ω ±1% 1/4W 68.1 Ω ±1% 1/4W 68.1 Ω ±1% 1/4W	GM11433200 GM11433200 GM114681G0 GM114681G0	C712 C713 }			FILM 0.01μF ±5% 100V	OF55103540
R116 R117 R118 ▲ R119 }		4822 116 60247 4822 116 60247	10 Ω ±1% 1/4W 27 Ω ±5% 2W 27 Ω ±5% 2W	GM114100G0 GA05270020 GA05270020	C716 C717 }			FILM 4700pF ±5% 100V	OF55472540
▲ R126 ▲ R127 }		4822 117 10158	1 Ω ±5% 1/4W	GG05010140	C720 C721 }				
▲ R134 R147 }			0.1 Ω ±10% 5W	GO10102050	C724 C725 }				
R150 R151 }			1k Ω ±1% 1/4W	GM11410010	C728		4822 124 80771	ELECT 100μF M 100V RA-2	OA10710020
R154 R155 }			27.4k Ω ±1% 1/4W	GM11427420				ELECT 47μF M 100V RA-2	OA47610020
R158 R191			10 Ω ±1% 1/4W	GM114100G0					
R192			TRIMMING RH068 CERMET 680B 0.3 W	RA06811100	R701 }				
R193			TRIMMING RH068 CERMET 680B 0.3 W	RA06811100	R704 R705 }		9965 000 00596	4.64k Ω ±1% 1/4W	GM11446410
R194			TRIMMING RH068 CERMET 100B 0.3 W	RA01011100	R708 R709 }			22.6k Ω ±1% 1/4W	GM11422620
▲ R852		4822 117 10158	TRIMMING RH068 CERMET 100B 0.3 W 1 Ω ±5% 1/4W	RA01011100 GG05010140	R712 R713 }			46.4 Ω ±1% 1/4W	GM114464G0
R***			P101-RESISTORS COMMON) CARBON FILM FIXED RES. ±5% 1/6W : R135 R136 R144 R146 R851		R728 R729 }			1k Ω ±1% 1/4W	GM11410010
					R732			301 Ω ±1% 1/4W	GM11430100

NOTE : "nsp" PART IS LISTED FOR REFERENCE ONLY, MARANTZ WILL NOT SUPPLY THESE PARTS.

POS. NO	VERS. COLOR	PART NO. (PCS)	DESCRIPTION	PART NO. (MJI)	POS. NO	VERS. COLOR	PART NO. (PCS)	DESCRIPTION	PART NO. (MJI)
R733 }			33.2 Ω $\pm 1\%$ 1/4W	GM114332G0	▲ Q731 ▲ Q732			TRS. 2SA1930 TRS. 2SA1930	HT11930000 HT11930000
R736 R737 }			38.3 Ω $\pm 1\%$ 1/4W	GM114383G0	LG01		9965 000 01576	P701-MISCELLANEOU RELAY MR82-24USR	LY20240480
R740 R741 R742 R743 }			4.64k Ω $\pm 1\%$ 1/4W 4.64k Ω $\pm 1\%$ 1/4W	GM11446410 GM11446410	RG01			PG01-VOLUME CIRCUIT BOARD VAR. RES. RK27112A0 (5KA*2) ALPS L=25MM	RM05020060
R746 R747 }			33.2 Ω $\pm 1\%$ 1/4W	GM114332G0				PN01-SPK. PROTECTOR AC PRI. CIRCUIT BOARD PN01-CAPACITORS	
R750 R751 }			1k Ω $\pm 1\%$ 1/4W	GM11410010	C119 }			FILM 0.047 μ F $\pm 5\%$ 100V	OF55473540
R754 R755 R756 R757 }			10 Ω $\pm 1\%$ 1/4W	GM114100G0	C122 CN01		4822 124 22276	ELECT 47 μ F M 50V RA-2	OA47605020
R760 R761 }			162 Ω $\pm 1\%$ 1/4W 162 Ω $\pm 1\%$ 1/4W	GM11416200 GM11416200	CN03 CN04 CN05 CN06 CN07		4822 124 22276 4822 124 22274 4822 124 42182	ELECT 47 μ F M 50V RA-2 CER. 0.1 μ F +80 -20% 50V CER. 0.1 μ F +80 -20% 50V ELECT 4.7 μ F M 50V RA-2 ELECT 3.3 μ F M 50V RA-2	OA47605020 DD38104040 DD38104040 OA47505020 OA33505020
R766 R767 R768 R791 }	4822 117 10158 4822 117 10158		68.1 Ω $\pm 1\%$ 1/4W	GM114681G0	R139 R140 RN05		4822 053 11109 4822 053 11109 4822 111 41276	PN01-RESISTORS 10 Ω $\pm 5\%$ 2W 10 Ω $\pm 5\%$ 2W 18k Ω $\pm 5\%$ 1/4W	GA05100020 GA05100020 GG05183140
R794 R795 }			TRIMMING RH068 CERMET 220B 0.3 W	RA02211100	R***			PN01-RESISTORS COMMON) CARBON FILM FIXED RES. $\pm 5\%$ 1/6W : R137 R138 RN01 RN02 RN03 RN06-RN20 RN51-RN54	
R798			5.11k Ω $\pm 1\%$ 1/4W	GM11451110					
			P701-EMICONDUCTORS						
D701 }			L.E.D. GL3HS8	HI10111320	D101 D102 DN51 DN52		4822 130 80837 4822 130 80837 4822 130 82421 4822 130 82421	DIODE HSS81TD 150V 150MA DIODE HSS81TD 150V 150MA DIODE 1D3 1A/200V DIODE 1D3 1A/200V	HD20027010 HD20027010 HD20002710 HD20002710
D704			(SUNSET ORANGE)						
DG01		4822 130 82421	DIODE 1D3 1A/200V	HD20002710					
Q701 }			TRS. 2SC2362K G	HT323621G0	QN01 QN02 QN03 QN04 QN05 QN06 QN07		4822 130 43283 4822 130 43283 4822 130 42999 4822 209 83312 4822 130 42999 4822 130 43283 4822 130 43283	TRS. 2SC2705 O OR Y TRS. 2SC2705 O OR Y TRS. 2SA1145 O OR Y IC TA7317P TRS. 2SA1145 O OR Y TRS. 2SC2705 O OR Y TRS. 2SC2705 O OR Y	HT327052A0 HT327052A0 HT111452A0 HC10042050 HT111452A0 HT327052A0 HT327052A0
Q704 Q705 }			TRS. 2SA1016K G	HT110161G0					
Q708 Q709 }			F.E.T. 2SK117 BL	HF201171D0				PN01-MISCELLANEOUS FUSE 8A 125V SM8 UL/CSA	FS10800540
Q712 Q713 Q714			TRS. 2SA1016K G TRS. 2SA1016K G	HT110161G0 HT110161G0	F901				
Q715 Q716 Q717 Q718 Q719 Q720	4822 130 43813 4822 130 43813		TRS. 2SC2362K G TRS. 2SC2362K G TRS. 2SA1209 S TRS. 2SA1209 S TRS. 2SC2911 S TRS. 2SC2911 S	HT323621G0 HT323621G0 HT112091B0 HT112091B0 HT329111B0 HT329111B0	G901 LN51 LN52		4822 280 70354 4822 280 70354	CER. DE1607-1F 103M-KH RELAY VB 24MBU-510 5A/240VAC RELAY VB 24MBU-510 5A/240VAC	DK17103910 LY20240310 LY20240310
Q721 Q722 Q723 Q724 Q725 Q726 Q727 Q728 ▲ Q729 ▲ Q730	4822 130 43192 4822 130 43192 4822 130 43617 4822 130 43617		TRS. 2SC1775A E TRS. 2SC1775A E TRS. 2SA872A E TRS. 2SA872A E TRS. 2SC2911 S TRS. 2SC2911 S TRS. 2SA1209 S TRS. 2SA1209 S TRS. 2SA1209 S TRS. 2SC5171 TRS. 2SC5171	HT317751E0 HT317751E0 HT108721E0 HT108721E0 HT329111B0 HT329111B0 HT112091B0 HT112091B0 HT112091B0 HT35171000 HT35171000	DS01 SS01			PS01-SELECTOR SW./POWER IND. CIRCUIT BOARD L.E.D. SELU1E50CM-S BLUE LED ROTARY SW. SRRM150200 L=20MM	HI10039080 SR01050090

NOTE : "nsp" PART IS LISTED FOR REFERENCE ONLY, MARANTZ WILL NOT SUPPLY THESE PARTS.

POS. NO	VERS. COLOR	PART NO. (PCS)	DESCRIPTION	PART NO. (MJI)
CS51		4822 124 22571	PV01-INPUT SELECTOR CIRCUIT BOARD	
CS52		4822 124 90362	PV01-CAPACITORS	
CV01			ELECT 10μF M 50V RA-2	OA10605020
CV02			ELECT 22μF M 50V RA-2	OA22605020
			CER. 0.1μF +80 -20% 50V	DD38104040
			CER. 0.1μF +80 -20% 50V	DD38104040
RS01		4822 050 23322	PV01-RESISTOR	
			3.3k Ω ±5% 1/4W	GG05332140
R***			PV01-RESISTORS COMMON)	
			CARBON FILM FIXED RES.	
			±5% 1/6W : RS51-RS55	
DS51		4822 130 32362	PV01-SEMICONDUCTORS	
DV01		4822 130 82421	DIODE 1SS176 MA165 1SS254	HD20002000
DV02		4822 130 82421	30V 0.1A	
DV03		4822 130 82421	DIODE 1D3 1A/200V	HD20002710
DV51		4822 130 82421	DIODE 1D3 1A/200V	HD20002710
}				
DV56		4822 130 82421	DIODE 1D3 1A/200V	HD20002710
QS51		4822 130 60588	DIG.TRS. DTC114ES/UN4211	BA20001000
QS52		4822 130 41947	10K 10K	
QS53		4822 130 41947	TRS. 2SC2458 2SC1740S	HT30001000
QS54		4822 130 63211	2SC3199 ETC.	
QS55		4822 130 60588	TRS. 2SC2458 2SC1740S	HT30001000
QS56		4822 130 61227	2SC3199 ETC.	
			DIG.TRS. DTA114TS/UN4115	BA10004000
			10K	
			DIG.TRS. DTC114ES/UN4211	BA20001000
			10K 10K	
			DIG.TRS. DTA114ES/UN4111	BA10001000
			10K 10K	
LV01		9965 000 01576	PV01-MISCELLANEOUS	
LV02		9965 000 01576	RELAY MR82-24USR	LY20240480
LV03		9965 000 01576	RELAY MR82-24USR	LY20240480
LV51		9965 000 01576	RELAY MR82-24USR	LY20240480
}				
LV54		9965 000 01576	RELAY MR82-24USR	LY20240480
JV51		9965 000 02540	PV51-BALANCE INPUT CIRCUIT BOARD	
JV52		9965 000 02540	JACK NC3FAH2 4P CANON	YJ01004340
			JACK NC3FAH2 4P CANON	YJ01004340

NOTE : "nsp" PART IS LISTED FOR REFERENCE ONLY, MARANTZ WILL NOT SUPPLY THESE PARTS.