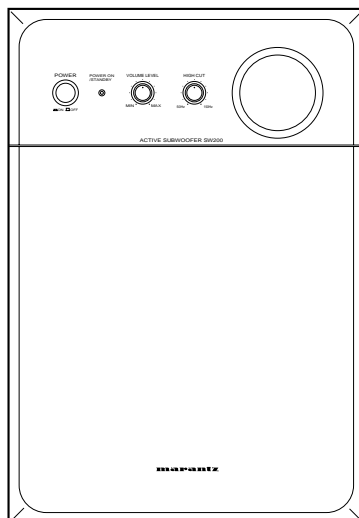


# Service Manual

SW200/F1M, /K1M

Active Subwoofer



## TABLE OF CONTENTS

|    |  |    |
|----|--|----|
| 1. | TECHNICAL SPECIFICATIONS .....             | 1  |
| 2. | BLOCK DIAGRAM .....                        | 2  |
| 3. | WIRING DIAGRAM .....                       | 3  |
| 4. | SCHEMATIC DIAGRAM AND PARTS LOCATION ..... | 5  |
| 5. | EXPLODED VIEW AND PARTS LIST .....         | 11 |
| 6. | ELECTRICAL PARTS LIST .....                | 13 |

Please use this service manual with referring to the user guide (D.F.U) without fail.

修理の際は、必ず取扱説明書を準備し操作方法を確認の上作業を行って下さい。

# marantz®

## SW200

SW200

## MARANTZ DESIGN AND SERVICE

Using superior design and selected high grade components, **MARANTZ** company has created the ultimate in stereo sound. Only original **MARANTZ** parts can insure that your **MARANTZ** product will continue to perform to the specifications for which it is famous.

Parts for your **MARANTZ** equipment are generally available to our National Marantz Subsidiary or Agent.

### ORDERING PARTS :

Parts can be ordered either by mail or by Fax.. In both cases, the correct part number has to be specified.

The following information must be supplied to eliminate delays in processing your order :

1. Complete address
2. Complete part numbers and quantities required
3. Description of parts
4. Model number for which part is required
5. Way of shipment
6. Signature : any order form or Fax. must be signed, otherwise such part order will be considered as null and void.

#### USA

**MARANTZ AMERICA, INC.**  
1100 MAPLEWOOD DRIVE  
ITASCA, IL. 60143  
USA  
PHONE : 630 - 741 - 0300  
FAX : 630 - 741 - 0301

#### EUROPE / TRADING

**MARANTZ EUROPE B.V.**  
P.O.BOX 80002, BUILDING SFF2  
5600 JB EINDHOVEN  
THE NETHERLANDS  
PHONE : +31 - 40 - 2732241  
FAX : +31 - 40 - 2735578

#### BRAZIL

**PHILIPS DA AMAZONIA IND. ELET. ITDA**  
CENTRO DE INFORMACOES AO  
CEP 04698-970  
SAO PAULO, SP, BRAZIL  
PHONE : 0800 - 123123(Discagem Direta Gratuita)  
FAX : +55 11 534. 8988

#### PROFESSIONAL AMERICAS

**SUPERSCOPE TECHNOLOGIES, INC.**  
MARANTZ PROFESSIONAL PRODUCTS  
2640 WHITE OAK CIRCLE, SUITE A  
AURORA, ILLINOIS 60504 USA  
PHONE : 630 - 820 - 4800  
FAX : 630 - 820 - 8103

#### PROFESSIONAL AUSTRALIA

**TECHNICAL AUDIO GROUP PTY, LTD**  
558 DARLING STREET,  
BALMAIN, NSW 2041,  
AUSTRALIA  
PHONE : 61 - 2 - 9810 - 5300  
FAX : 61 - 2 - 9810 - 5355

#### CANADA

**LENBROOK INDUSTRIES LIMITED**  
633 GRANITE COURT,  
PICKERING, ONTARIO L1W 3K1  
CANADA  
PHONE : 905 - 831 - 6333  
FAX : 905 - 831 - 6936

#### AUSTRALIA

**QualiFI Pty Ltd,**  
24 LIONEL ROAD,  
MT. WAVERLEY VIC 3149  
AUSTRALIA  
PHONE : +61 - (0)3 - 9543 - 1522  
FAX : +61 - (0)3 - 9543 - 3677

#### THAILAND

**MRZ STANDARD CO.,LTD**  
746 - 754 MAHACHAI ROAD.,  
WANGBURAPAPIROM, PHRANAKORN,  
BANGKOK, 10200 THAILAND  
PHONE : +66 - 2 - 222 9181  
FAX : +66 - 2 - 224 6795

#### SINGAPORE

**WO KEE HONG DISTRIBUTION PTE LTD**  
130 JOO SENG ROAD  
#03-02 OLIVINE BUILDING  
SINGAPORE 368357  
PHONE : +65 858 5535 / +65 381 8621  
FAX : +65 858 6078

#### NEW ZEALAND

**WILDASH AUDIO SYSTEMS NZ**  
14 MALVERN ROAD MT ALBERT  
AUCKLAND NEW ZEALAND  
PHONE : +64 - 9 - 8451958  
FAX : +64 - 9 - 8463554

#### TAIWAN

**PAI- YUING CO., LTD.**  
6 TH FL NO, 148 SUNG KIANG ROAD,  
TAIPEI, 10429, TAIWAN R.O.C.  
PHONE : +886 - 2 - 25221304  
FAX : +886 - 2 - 25630415

#### MALAYSIA

**WO KEE HONG ELECTRONICS SDN. BHD.**  
SUITE 8.1, LEVEL 8, MENARA GENESIS,  
NO. 33, JALAN SULTAN ISMAIL,  
50250 KUALA LUMPUR, MALAYSIA  
PHONE : +60 3 - 2457677  
FAX : +60 3 - 2458180

#### JAPAN Technical

**MARANTZ JAPAN, INC.**  
35- 1, 7- CHOME, SAGAMIONO  
SAGAMIHARA - SHI, KANAGAWA  
JAPAN 228-8505  
PHONE : +81 42 748 1013  
FAX : +81 42 741 9190

#### 日本マランツ株式会社

本 社 〒228-8505  
神奈川県相模原市相模大野7-35-1  
営業本部 〒150-0022  
東京都渋谷区恵比寿南1-11-9

#### KOREA

**MK ENTERPRISES LTD.**  
ROOM 604/605, ELECTRO-OFFICETEL, 16-58,  
3GA, HANGANG-RO, YONGSAN-KU, SEOUL  
KOREA  
PHONE : +822 - 3232 - 155  
FAX : +822 - 3232 - 154

### SHOCK, FIRE HAZARD SERVICE TEST :

**CAUTION :** After servicing this appliance and prior to returning to customer, measure the resistance between either primary AC cord connector pins ( with unit NOT connected to AC mains and its Power switch ON ), and the face or Front Panel of product and controls and chassis bottom.

Any resistance measurement less than 1 Megohms should cause unit to be repaired or corrected before AC power is applied, and verified before it is return to the user/customer.

Ref. UL Standard No. 1492.

In case of difficulties, do not hesitate to contact the Technical  
Department at above mentioned address.

## 1.TECHNICAL SPECIFICATIONS

### AMPLIFIER

Output ..... 70 W (EIAJ THD 10%)  
Input Terminals ..... Line / SPK.  
Output Terminals ..... SPK.  
S/N Ratio ..... 95 dB

### SPEAKER

Type..... 1-way Bass Ref type  
Playback Frequency Response ..... 30 ~ 200 Hz (–10 dB)  
Drive Unit..... Magnetically shielded woofer with 200mm cone x 1  
High Cut Filter ..... 50 ~ 150 Hz Continuously variable (–24 dB / oct.)

### POWER SUPPLY

Power Supply..... AC 100V, 50 / 60 Hz ( / F )  
AC 110 - 115V/ 220 - 230V, 50 / 60 Hz ( / K )  
Rated power consumption ..... 39 W

### APPEARANCE

Maximum External Dimensions.....235 x 340 x 318 mm (Width x Height x Depth)  
Weight .....8.4 kg

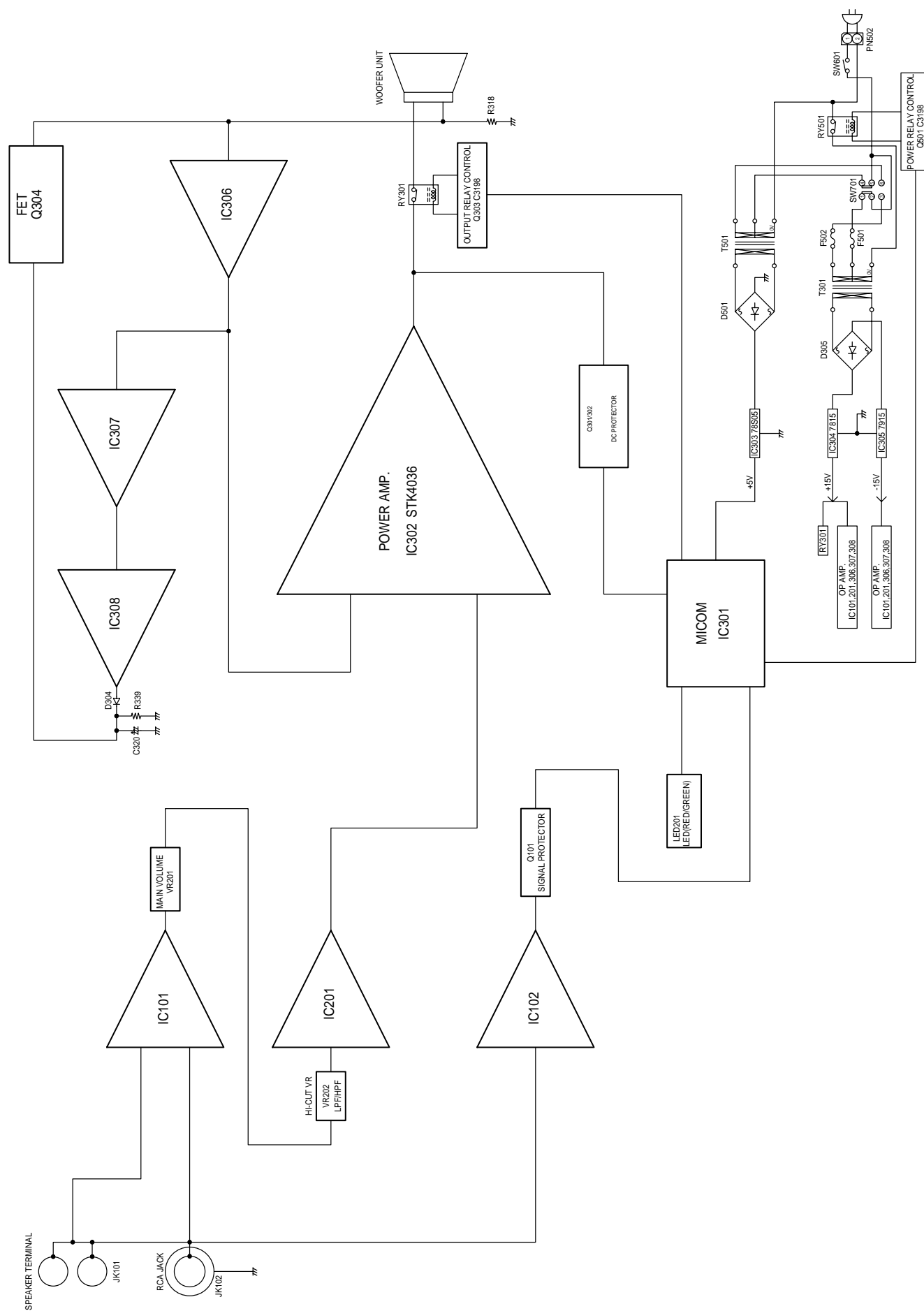
### ACCESSORIES

Audio Cable (3m - RCA Pin plug) ..... 1  
Speaker Cable (4 m) ..... 2  
User's Manual ..... 1

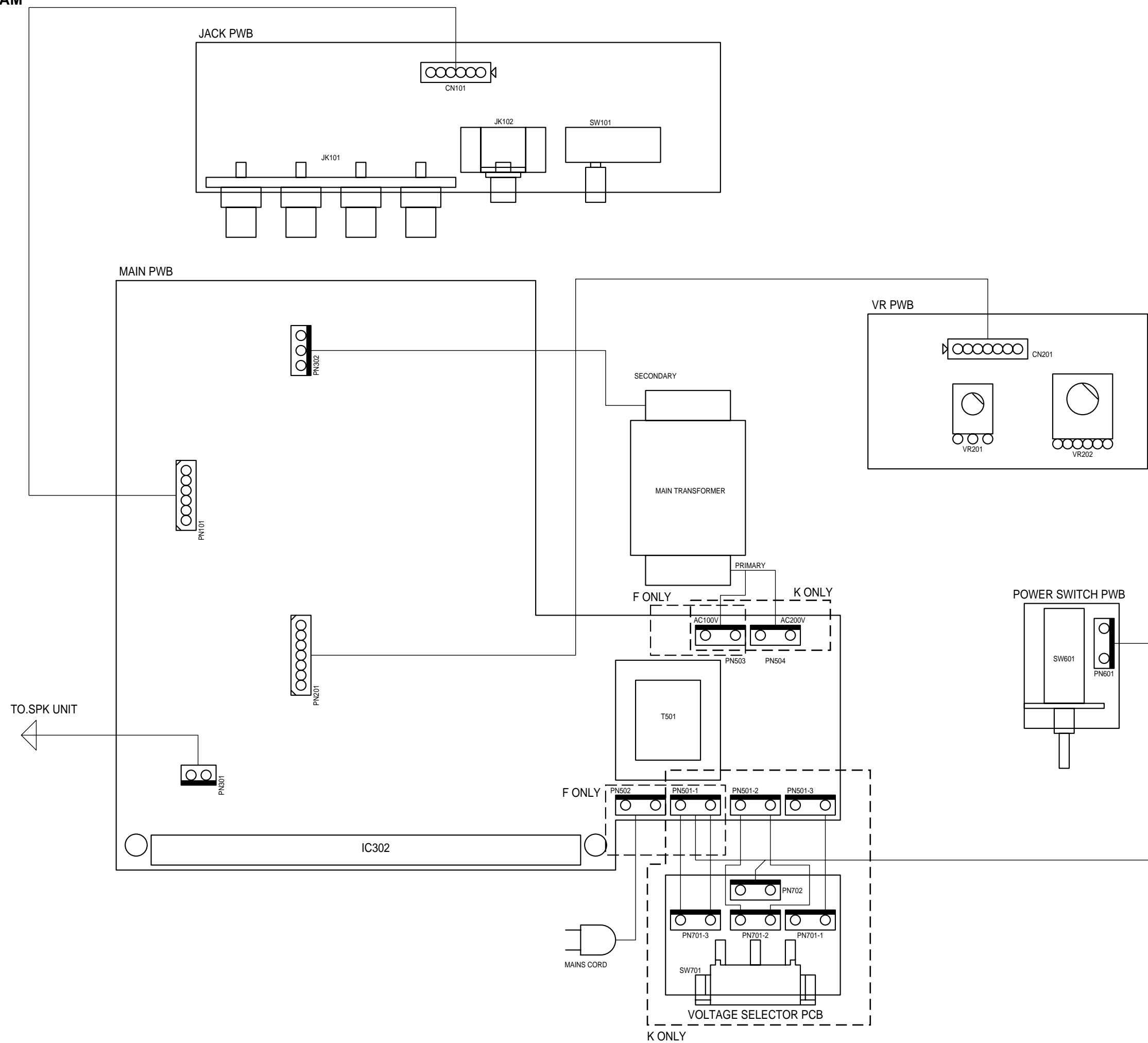
\* The SW200 drive unit has a magnetically shielded design, but it may cause color irregularities on television screens if placed close to the set.  
In this case, increase the distance between the television and the SW200 unit accordingly.

\* Specifications and appearance are subject to change without notice due to improvements.

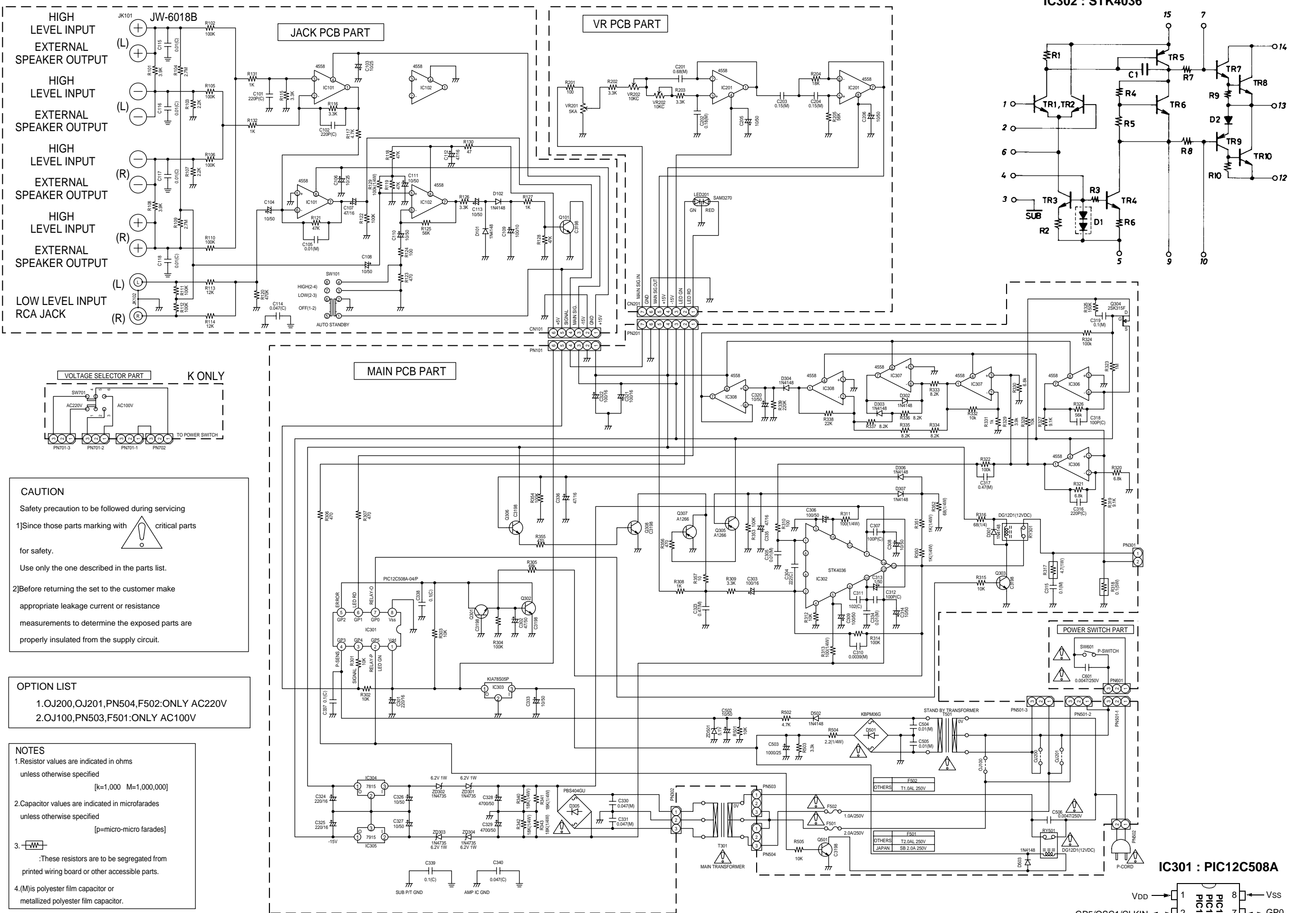
## 2. BLOCK DIAGRAM



3. WIRING DIAGRAM

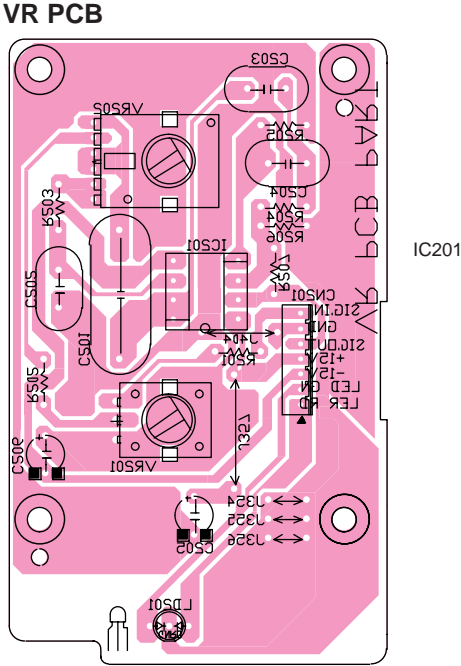
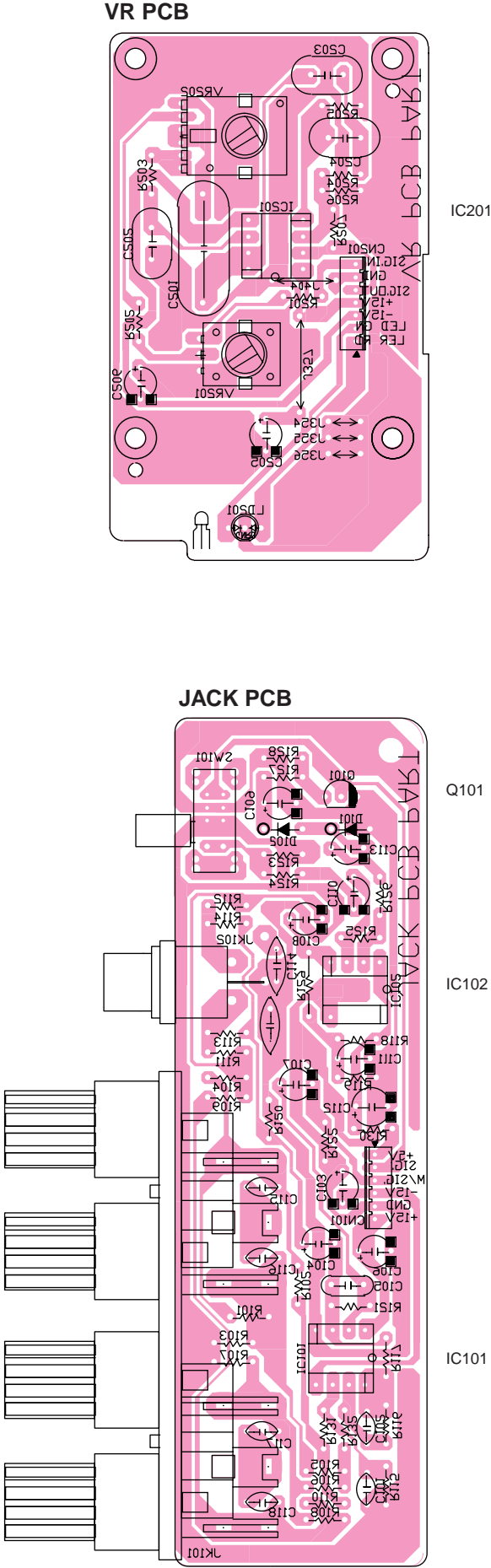
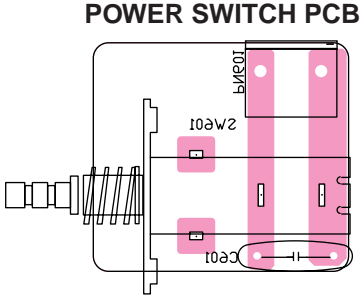
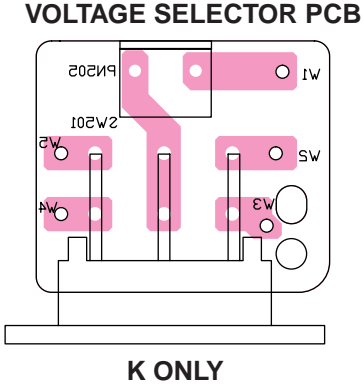
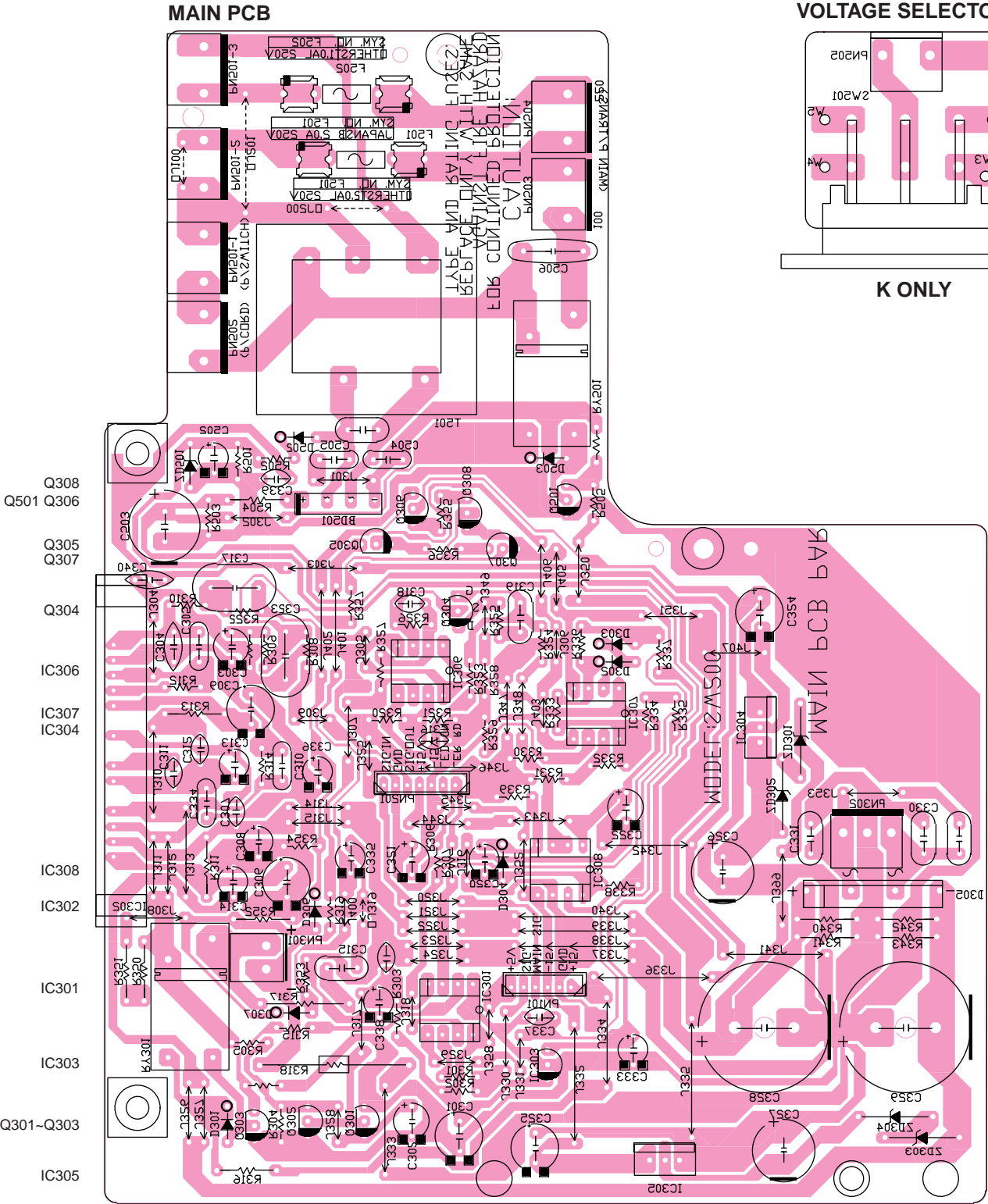


4. SCHEMATIC DIAGRAM AND PARTS LOCATION



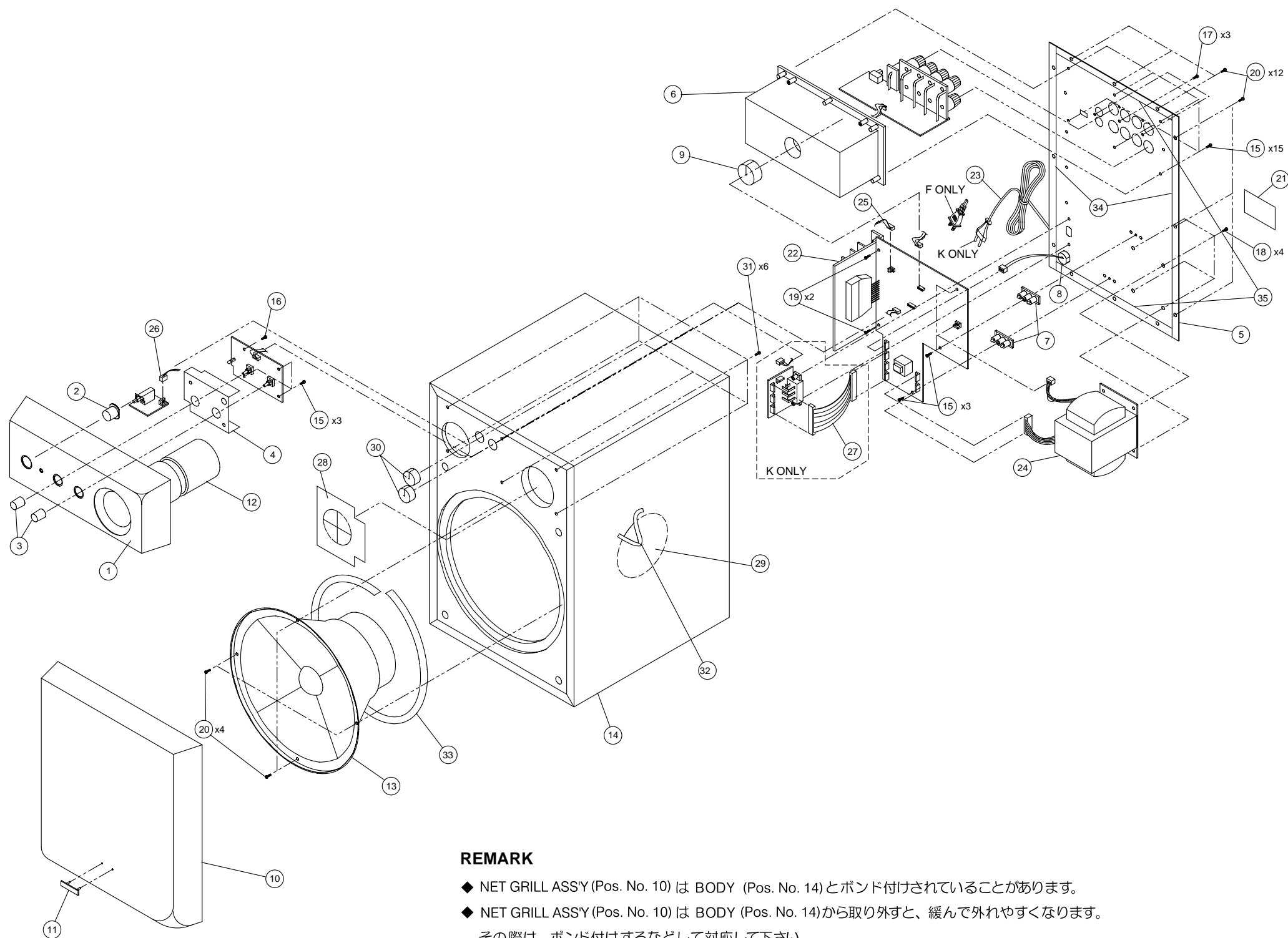


(SOLDER SIDE)





5. EXPLODED VIEW AND PARTS LIST



REMARK

- ◆ NET GRILL ASS'Y (Pos. No. 10) は BODY (Pos. No. 14) とボンド付けされていることがあります。
- ◆ NET GRILL ASS'Y (Pos. No. 10) は BODY (Pos. No. 14) から取り外すと、緩んで外れやすくなります。  
その際は、ボンド付けするなどして対応して下さい。
- ◆ WOOFER UNIT (Pos. No. 13) は BODY (Pos. No. 14) から取り外すと、SCREW (Pos. No. 20) が緩んで外れやすくなります。その際は、ボンド付けするなどして対応して下さい。

REMARK

- NET GRILL ASS'Y (Pos. No. 10) and BODY (Pos. No. 14) can be fixed by bond .
- If NET GRILL ASS'Y (Pos. No. 10) removes from BODY (Pos. No. 14), it will be loose and will become easy to separate. In that case, please fix by bond or etc. and correspond .
- If WOOFER UNIT (Pos. No. 13) removes from BODY (Pos. No. 14), SCREW (Pos. No. 20) will be loose and will not be affective. In that case, please fix by bond or etc. and correspond .

| POS. NO      | VERS. COLOR          | DESCRIPTION   |                        | PART NO. (MJI)           |
|--------------|----------------------|---|------------------------|--------------------------|
| 1            | /F<br>/K             | 3720V-0008A   | FRONT PANEL            | 317W248010               |
| 2            |                      | 4940V-0008A   | BUTTON POWER           | 317W270010               |
| 3            |                      | 4940V-0009A   | KNOB VOLUME/HIGH CUT   | 317W154010               |
| 4            |                      | 3300V-0001A   | SHIELD                 | nsp                      |
| 5            |                      | 3720V-0009A   | REAR PANEL             | nsp                      |
| 5            |                      | 3720V-0009B   | REAR PANEL             | nsp                      |
| 6            |                      | 3550V-0002A   | COVER JACK PCB         | nsp                      |
| 7            |                      | 4930V-0007A   | HOLDER PCB             | nsp                      |
| 8            |                      | 4930V-0006A   | CORD BUSHING           | 317W259010               |
| 9            |                      | 4850V-0001F   | CUSHION                | nsp                      |
| 10           |                      | SGC-223-01  | NET GRILL ASSY         | 317W401500               |
| 11           |                      | SPB-000-03  | BADGE MARANTZ.AU(GOLD) | 354H251230               |
| 12           |                      | SUE-551-04  | DUCT                   | nsp                      |
| 13           |                      | SXB-200-59  | WOOFER UNIT            | QK0205901R               |
| 14           |                      | HAB-232-05  | BODY                   | nsp                      |
| 15           |                      | 4000V-0001F   | SCREW                  | nsp                      |
| 16           |                      | 4000V-0007A   | SCREW                  | nsp                      |
| 17           |                      | 4000V-0001K   | SCREW                  | nsp                      |
| 18           |                      | 4000V-0002A   | SCREW                  | nsp                      |
| 19           |                      | 4000V-0001D   | SCREW(BIND HEAD)       | nsp                      |
| 20           |                      | SFG-000-05  | SCREW WOOD             | nsp                      |
| 21           | /K<br>/F<br>/K<br>/F | SRB-002-02  | LABEL SERIAL NO.       | nsp                      |
| 22           |                      | 4920V-E007A   | HEATSINK MAIN          | nsp                      |
| 23           |                      | 6410V-E1W0A   | POWER CORD             | *ZC000120R               |
| 23           |                      | 6410V-J0W0A   | POWER CORD             | *ZC000130R               |
| ▲ 24         |                      | 6170V-Z66WK   | POWER TRANSFORMER      | *TS001390R               |
| ▲ 24         |                      | 6170V-J66WK   | POWER TRANSFORMER      | *TS001400R               |
| 25           |                      | 6630V-WT BCT  | SPEAKER CONNECTOR 2P   | nsp                      |
| 26           |                      | 6630V-WWBDT   | CONNECTOR 2P           | nsp                      |
| 27           |                      | 6630V-WWCKD   | CONNECTOR 5P           | nsp                      |
| 28           |                      | SGG-881-01  | GASKET PORT            | nsp                      |
| 29           |                      | SGG-270-01  | GASKET EVA             | nsp                      |
| 30           |                      | SGG-050-01  | GASKET CORD            | nsp                      |
| 31           |                      | SFG-000-20  | SCREW                  | nsp                      |
| 32           |                      | YMG-500   | COLOR TIE 100mm        | nsp                      |
| 33           |                      | SGG-187-03  | WOOFER GASKET          | nsp                      |
| 34           |                      | 4850V-0001D   | CUSHION                | nsp                      |
| 35           |                      | 4850V-0001E   | CUSHION                | nsp                      |
| 001T<br>001T | /F<br>/K             | PACKING<br>USER GUIDE JAPANESE<br>USER GUIDE<br>ENGLISH/CHINESE |                        | 317W851110<br>317W851350 |
| 001S<br>002S |                      | NOT STANDARD SPARE PARTS<br>PACKING CASE<br>CUSHION             |                        | 317W801010<br>317W809010 |

NOTE : "nsp" PART IS LISTED FOR REFERENCE ONLY, MARANTZ WILL NOT SUPPLY THESE PARTS.

6. ELECTRICAL PARTS LIST

ASSIGNMENT OF COMMON PARTS CODES.

RESISTORS

R \* \* \* : 1) GD05 x x x 140, Carbon film fixed resistor,±5% 1/4W  
R \* \* \* : 2) GD05 x x x 160, Carbon film fixed resistor,±5% 1/6W

Examples  
① Resistance value  
0.1Ω ..... 001 10 Ω ..... 100 1kΩ ..... 102 100kΩ ..... 104  
0.5Ω ..... 005 18 Ω ..... 180 2.7kΩ ..... 272 680kΩ ..... 684  
1Ω ..... 010 100Ω ..... 101 10kΩ ..... 103 1MΩ ..... 105  
6.8Ω ..... 068 390Ω ..... 391 22kΩ ..... 223 4.7MΩ ..... 475  
**Note** : Please distinguish 1/4W from 1/6W by the shape of parts used actually.



CAPACITORS

C \* \* \* : CERAMIC CAP.  
3) DD1 x x x 370, Ceramic capacitor  
Disc type  
Temp.coeff. P350~N1000, 50V  
③ Capacity value  
② Tolerance

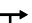


Examples  
② Tolerance (Capacity deviation)  
±0.25 pF ..... 0  
±0.5 pF ..... 1  
±5 % ..... 5  
Tolerance of COMMON PARTS handled here are as follows :  
0.5 pF - 5 pF ..... ± 0.25 pF  
6 pF - 10 pF ..... ± 0.5 pF  
12 pF - 560 pF ... ± 5 %  
③ Capacity value  
0.5 pF .... 005 3 pF ..... 030 100 pF ..... 101  
1 pF .... 010 10 pF ..... 100 220 pF ..... 221  
1.5 pF .... 015 47 pF ..... 470 560 pF ..... 561

C \* \* \* : CERAMIC CAP.  
4) DK16 x x x 300, High dielectric constant ceramic capacitor  
Disc type  
Temp.chara. 2B4, 50V  
④ Capacity value

Examples  
④ Capacity value  
100 pF ..... 101 1000 pF .... 102 10000 pF .... 103  
470 pF ..... 471 2200 pF .... 222

C \* \* \* : 5) ELECTROLY CAP.( , 6)FILM CAP ( )  
5) EA x x x x x 10, Electrolytic capacitor  
One-way lead type,Tolerance ±20%  
⑥ Working voltage  
⑤ Capacity value

Examples  
⑤ Capacity value  
0.1 μ F .... 104 4.7 μ F .... 475 100 μ F ..... 107  
0.33 μ F .... 334 10 μ F ..... 106 330 μ F ..... 337  
1 μ F .... 105 22 μ F ..... 226 1100 μ F ..... 118  
2200 μ F .... 228  
⑥ Working voltage  
6.3 V ..... 006 25 V ..... 025  
10 V ..... 010 35 V ..... 035  
16 V ..... 016 50 V ..... 050

6) DF15 x x x 350  Plastic film capacitor  
DF15 x x x 310  One-way type, Mylar ±5% 50V  
DF16 x x x 310  Plastic film capacitor  
One-way type, Mylar ±10% 50V  
⑦ Capacity value

Examples  
⑦ Capacity value  
0.001 μ F (1000 pF) ..... 102 0.1 μ F ..... 104  
0.0018 μ F ..... 182 0.56 μ F ..... 564  
0.01 μ F ..... 103 1 μ F ..... 105  
0.015 μ F ..... 153

**NOTE** 1) The above CODES(R \* \* \* ,R \* \* \* ,C \* \* \* ,C \* \* \* and C \* \* \* ) are omitted on the schematic diagram in some case.  
2) On the occasion, be confirmed the common parts on the parts list.  
3) Refer to “Common Parts List” for the other common parts(**RI05, DD4, DK4**).

NOTE ON SAFETY FOR FUSIBLE RESISTOR :

The suppliers and their type numbers of fusible resistors are as follows ;


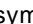
1 . KOA Corporation  
Part No.(MJI) Type No.(KOA) Description  
NH05 x x x 140 RF25S x x x x Ω J ±5% (1/4W)  
NH05 x x x 120 RF50S x x x x Ω J ±5% (1/2W)  
NH85 x x x 110 RF73B2A x x x x Ω J ±5% (1/10W)  
NH95 x x x 140 RF73B2E x x x x Ω J ±5% (1/4W)  
\* Resistance value Resistance value(0.1Ω - 10k Ω)

2. Matsushita Electronic Components Co., Ltd  
Part No.(MJI) Type No.(MEC) Description  
NF05 x x x 140 ERD-2FCJ x x x (±5% 1/4W)  
NF05 x x x 140 ERD-2FCG x x x (±2% 1/4W)  
NF02 x x x 140  
RF02 x x x 140  
\* Resistance value


Examples  
\* Resistance value  
0.1Ω ..... 001 10 Ω ..... 100 1kΩ ..... 102 100kΩ ..... 104  
0.5Ω ..... 005 18 Ω ..... 180 2.7kΩ ..... 272 680kΩ ..... 684  
1Ω ..... 010 100Ω ..... 101 10kΩ ..... 103 1MΩ ..... 105  
6.8Ω ..... 068 390Ω ..... 391 22kΩ ..... 223 4.7MΩ ..... 475

| ABBREVIATION AND MARKS |                  |         |               |
|------------------------|------------------|---------|---------------|
| ANT.                   | : ANTENNA        | BATT.   | : BATTERY     |
| CAP.                   | : CAPACITOR      | CER.    | : CERAMIC     |
| CONN.                  | : CONNECTING     | DIG.    | : DIGITAL     |
| HP                     | : HEADPHONE      | MIC.    | : MICROPHONE  |
| μ-PRO                  | : MICROPROCESSOR | REC.    | : RECORDING   |
| RES.                   | : RESISTOR       | SPK     | : SPEAKER     |
| SW                     | : SWITCH         | TRANSF. | : TRANSFORMER |
| TRIM.                  | : TRIMMING       | TRS.    | : TRANSISTOR  |
| VAR.                   | : VARIABLE       | X' TAL  | : CRYSTAL     |

NOTE ON SAFETY:

Symbol  Fire or electrical shock hazard. Only original parts should be used to replaced any part marked with symbol  Any other component substitution ( other than original type), may increase risk of fire or electrical shock hazard.

安全上の注意 :

 がついている部品は、安全上重要な部品です。必ず指定されている部品番号の部品を使用して下さい。

| POS. NO                       | VERS. COLOR | DESCRIPTION                               | PART NO. (MJI) |
|-------------------------------|-------------|---|----------------|
| MAIN CIRCUIT BOARD CAPACITORS |             |   |                |
| C301                          |             | 0CE2276F605 ELECT 220/16,TP               | nsp            |
| C302                          |             | 0CE4766K605 ELECT 47/50,TP                | nsp            |
| C303                          |             | 0CE1076F605 ELECT 100/16,TP               | nsp            |
| C304                          |             | 0CK2220K405 CER. 222,TP                   | nsp            |
| C305                          |             | 0CQ1031N405 MYLAR 103,TP                  | nsp            |
| C306                          |             | 0CE1076K605 ELECT 100/50,TP               | nsp            |
| C307                          |             | 0CC1010K415 CER. 100P,TP                  | nsp            |
| C308                          |             | 0CE1066K605 ELECT 10/50,TP                | nsp            |
| C309                          |             | 0CE1076K605 ELECT 100/50,TP               | nsp            |
| C310                          |             | 0CQ3921N405 MYLAR 392,TP                  | nsp            |
| C311                          |             | 0CK1020K405 CER. 102,TP                   | nsp            |
| C312                          |             | 0CC1010K415 CER. 100P,TP                  | nsp            |
| C313                          |             | 0CE1056K605 ELECT 1/50,TP                 | nsp            |
| C314                          |             | 0CE1066K605 ELECT 10/50,TP                | nsp            |
| C315                          |             | 0CQ1041N405 MYLAR 104,TP                  | nsp            |
| C316                          |             | 0CC2210K405 CER. 220P                     | nsp            |
| C317                          |             | 0CQ4741N401 MYLAR 474                     | nsp            |
| C318                          |             | 0CC1010K415 CER. 100P,TP                  | nsp            |
| C319                          |             | 0CQ1041N405 MYLAR 104,TP                  | nsp            |
| C320                          |             | 0CE1066K605 ELECT 10/50,TP                | nsp            |
| C321                          |             | 0CE1076F605 ELECT 100/16,TP               | nsp            |
| C322                          |             | 0CE1076F605 ELECT 100/16,TP               | nsp            |
| C323                          |             | 0CQ4741N401 MYLAR 474                     | nsp            |
| C324                          |             | 0CE2276F605 ELECT 220/16,TP               | EA22701610     |
| C325                          |             | 0CE2276F605 ELECT 220/16,TP               | EA22701610     |
| C326                          |             | 0CE1066K605 ELECT 10/50,TP                | EA10605010     |
| C327                          |             | 0CE1066K605 ELECT 10/50,TP                | EA10605010     |
| C328                          |             | 0CE4787K610 ELECT 4700/50                 | *EA001060R     |
| C329                          |             | 0CE4787K610 ELECT 4700/50                 | *EA001060R     |
| C330                          |             | 0CQ4731N405 MYLAR 473,TP                  | nsp            |
| C331                          |             | 0CQ4731N405 MYLAR 473,TP                  | nsp            |
| C333                          |             | 0CE1066K605 ELECT 10/50,TP                | nsp            |
| C334                          |             | 0CQ1031N405 MYLAR 103,TP                  | nsp            |
| C335                          |             | 0CE4766F605 ELECT 47/16,TP                | nsp            |
| C336                          |             | 0CE4766F605 ELECT 47/16,TP                | nsp            |
| C337                          |             | 0CK1040K405 CER. 104,TP                   | nsp            |
| C338                          |             | 0CE1056K605 ELECT 1/50,TP                 | nsp            |
| C339                          |             | 0CK1040K405 CER. 104,TP                   | nsp            |
| C340                          |             | 0CK4730K405 CER. 473,TP                   | nsp            |
| C502                          |             | 0CE1066K605 ELECT 10/50,TP                | nsp            |
| C503                          |             | 0CE1086H605 ELECT 1000/25                 | nsp            |
| C504                          |             | 0CQ1031N405 MYLAR 103,TP                  | nsp            |
| C505                          |             | 0CQ1031N405 MYLAR 103,TP                  | nsp            |
| ▲C506                         |             | 0DC4721R6A1 CER. 472/250V                 | *DK100690R     |
| RESISTORS                     |             |   |                |
| R301                          |             | 0RD1002F409 10K,1/6W,5%,TP52              | nsp            |
| R302                          |             | 0RD1002F409 10K,1/6W,5%,TP52              | nsp            |
| R303                          |             | 0RD1002F409 10K,1/6W,5%,TP52              | nsp            |
| R304                          |             | 0RD1003F409 100K,1/6W,5%,TP52             | nsp            |
| R305                          |             | 0RD6802F409 68K,1/6W,5%,TP52              | nsp            |
| R306                          |             | 0RD4700F409 470,1/6W,5%,TP52              | nsp            |
| R307                          |             | 0RD4700F409 470,1/6W,5%,TP52              | nsp            |
| R308                          |             | 0RD1001F409 1K,1/6W,5%,TP52               | nsp            |
| R309                          |             | 0RD3301F409 3.3K,1/6W,5%,TP52             | nsp            |
| R310                          |             | 0RD1000F409 100,1/6W,5%,TP52              | nsp            |
| R311                          |             | 0RD1000G409 100,1/4W,5%,TP52              | nsp            |
| R312                          |             | 0RD1002F409 10K,1/6W,5%,TP52              | nsp            |
| R313                          |             | 0RD1000G409 100,1/4W,5%,TP52              | nsp            |
| R314                          |             | 0RD1003F409 100K,1/6W,5%,TP52             | nsp            |
| R315                          |             | 0RD1002F409 10K,1/6W,5%,TP52              | nsp            |
| R316                          |             | 0RD0682G409 68,1/4W,5%,TP52               | nsp            |
| R317                          |             | 0RN0471J410 4.7(1W)                       | GA05047010     |
| R318                          |             | 0RC0100M425 CEMENT 0.1(5W), FORMING(25mm) | *G0000009R     |
| R319                          |             | 0RD9101F409 9.1K,1/6W,5%,TP52             | nsp            |

| POS. NO        | VERS. COLOR | DESCRIPTION                     | PART NO. (MJI) |
|----------------|-------------|---------------------------------|----------------|
| R320           |             | 0RD6801F409 6.8K,1/6W,5%,TP52   | nsp            |
| R321           |             | 0RD6801F409 6.8K,1/6W,5%,TP52   | nsp            |
| R322           |             | 0RD1003F409 100K,1/6W,5%,TP52   | nsp            |
| R323           |             | 0RD1004F409 1M,1/6W,5%,TP52     | nsp            |
| R324           |             | 0RD1003F409 100K,1/6W,5%,TP52   | nsp            |
| R325           |             | 0RD1503F409 150K,1/6W,5%,TP52   | nsp            |
| R326           |             | 0RD5602F409 56K,1/6W,5%,TP52    | nsp            |
| R327           |             | 0RD9101F409 9.1K,1/6W,5%,TP52   | nsp            |
| R328           |             | 0RD1002F409 10K,1/6W,5%,TP52    | nsp            |
| R329           |             | 0RD3901F409 3.9K,1/6W,5%,TP52   | nsp            |
| R330           |             | 0RD6801F409 6.8K,1/6W,5%,TP52   | nsp            |
| R331           |             | 0RD1001F409 1K,1/6W,5%,TP52     | nsp            |
| R332           |             | 0RD1002F409 10K,1/6W,5%,TP52    | nsp            |
| R333           |             | 0RD8201F409 8.2K,1/6W,5%,TP52   | nsp            |
| R334           |             | 0RD8201F409 8.2K,1/6W,5%,TP52   | nsp            |
| R335           |             | 0RD8201F409 8.2K,1/6W,5%,TP52   | nsp            |
| R336           |             | 0RD8201F409 8.2K,1/6W,5%,TP52   | nsp            |
| R337           |             | 0RD8201F409 8.2K,1/6W,5%,TP52   | nsp            |
| R338           |             | 0RD2202F409 22K,1/6W,5%,TP52    | nsp            |
| R339           |             | 0RD2203F409 220K,1/6W,5%,TP52   | nsp            |
| R340           |             | 0RD1802G409 18K,1/4W,5%,TP52    | nsp            |
| R341           |             | 0RD1802G409 18K,1/4W,5%,TP52    | nsp            |
| R342           |             | 0RD1802G409 18K,1/4W,5%,TP52    | nsp            |
| R343           |             | 0RD1802G409 18K,1/4W,5%,TP52    | nsp            |
| R350           |             | 0RD1001G409 1K,1/4W,5%,TP52     | nsp            |
| R351           |             | 0RD1001G409 1K,1/4W,5%,TP52     | nsp            |
| R352           |             | 0RD0682G409 68,1/4W,5%,TP52     | nsp            |
| R353           |             | 0RD1003F409 100K,1/6W,5%,TP52   | nsp            |
| R354           |             | 0RD1003F409 100K,1/6W,5%,TP52   | nsp            |
| R355           |             | 0RD4700F409 470,1/6W,5%,TP52    | nsp            |
| R356           |             | 0RD4700F409 470,1/6W,5%,TP52    | nsp            |
| R357           |             | 0RD0102F409 10,1/6W,5%,TP52     | nsp            |
| R501           |             | 0RD1002F409 10K,1/6W,5%,TP52    | nsp            |
| R502           |             | 0RD4701F409 4.7K,1/6W,5%,TP52   | nsp            |
| R503           |             | 0RD3301F409 3.3K,1/6W,5%,TP52   | nsp            |
| R504           |             | 0RD0221G409 2.2,1/4W,5%,TP52    | nsp            |
| R505           |             | 0RD1002F409 10K,1/6W,5%,TP52    | nsp            |
| RY301          |             | 6920V-DG1A1 RELAY DG12D1(12VDC) | LY10120350     |
| ▲RY501         |             | 6920V-DG1A1 RELAY DG12D1(12VDC) | LY10120350     |
| SEMICONDUCTORS |             |                                 |                |
| D301           |             | 0DD4148B052 DIODE 1N4148        | nsp            |
| ∫              |             |                                 |                |
| D304           |             |                                 |                |
| ▲D305          |             | 0DD404GE108 DIODE PBS404GU      | *HE200270R     |
| D306           |             | 0DD4148B052 DIODE 1N4148        | nsp            |
| D307           |             | 0DD4148B052 DIODE 1N4148        | nsp            |
| ▲BD501         |             | 0DDM06GD114 DIODE KBPM06G       | *HE200280R     |
| D502           |             | 0DD4148B052 DIODE 1N4148        | nsp            |
| D503           |             | 0DD4148B052 DIODE 1N4148        | nsp            |
| IC301          |             | 0IMI508ADIP IC PIC12C508A-04/P  | *HC107000R     |
| IC302          |             | 0ISA4036TFH IC STK4036          | HC10173030     |
| IC303          |             | 0IKE78S05TP IC KIA78S05P        | HC38105090     |
| IC304          |             | 0IKE7815SIP IC KIA7815          | HC3891509F     |
| IC305          |             | 0IKE7915SIP IC KIA7915          | HC3991509F     |
| IC306          |             | 0IKE4558DIP IC KIA4558          | HC10008090     |
| IC307          |             | 0IKE4558DIP IC KIA4558          | HC10008090     |
| IC308          |             | 0IKE4558DIP IC KIA4558          | HC10008090     |
| Q301           |             | 0TR3198AHNP TRS. 2SC3198        | nsp            |
| Q302           |             | 0TR3198AHNP TRS. 2SC3198        | nsp            |
| Q303           |             | 0TR3198AHNP TRS. 2SC3198        | nsp            |
| Q304           |             | 0TF315FBLNC FET,2SK315F         | *HF200270R     |
| Q305           |             | 0TR1266AFP N TRS. 2SA1266Y      | nsp            |
| Q306           |             | 0TR3198AHNP TRS. 2SC3198        | nsp            |
| Q307           |             | 0TR1266AFP N TRS. 2SA1266Y      | nsp            |
| Q308           |             | 0TR3198AHNP TRS. 2SC3198        | nsp            |

NOTE : "nsp" PART IS LISTED FOR REFERENCE ONLY, MARANTZ WILL NOT SUPPLY THESE PARTS.

| POS. NO          | VERS. COLOR | DESCRIPTION |  | PART NO. (MJI) | POS. NO | VERS. COLOR | DESCRIPTION   |                                   | PART NO. (MJI) |
|------------------|-------------|-------------|--|----------------|---------|-------------|---------------|-----------------------------------|----------------|
| Q501             |             | 0TR3198AHNP | TRS. 2SC3198                               | nsp            | R118    |             | 0RD4702F409   | 47K,1/6W,5%,TP52                  | nsp            |
| ▲ F501<br>▲ F502 | /K          |             | MISCELLANEOUS                              |                | R119    |             | 0RD4702F409   | 47K,1/6W,5%,TP52                  | nsp            |
|                  |             | 0FT2000T503 | FUSE 5*20,50T 2.0A/250V VDE                | FS10200800     | R120    |             | 0RD4703F409   | 470K,1/6W,5%,TP52                 | nsp            |
|                  |             | 0FT1000T503 | FUSE 5*20,50T 1.0A/250V VDE                | FS10100950     | R121    |             | 0RD4702F409   | 47K,1/6W,5%,TP52                  | nsp            |
| ▲ PM502          |             | 6602V-D02ST | WAFER 2P,P=7.92,HANLIM, LWP1143-02         | nsp            | R122    |             | 0RD1003F409   | 100K,1/6W,5%,TP52                 | nsp            |
| PM504            | /K          | 6602V-D02ST | WAFER 2P,P=7.92,HANLIM, LWP1143-02         | nsp            | R123    |             | 0RD4700F409   | 470,1/6W,5%,TP52                  | nsp            |
| PN101            |             | 6602V-A06ST | WAFER 6P,P=2.0,53014-06                    | nsp            | R124    |             | 0RD1000F409   | 100,1/6W,5%,TP52                  | nsp            |
| PN201            |             | 6602V-A07ST | WAFER 7P,P=2.0,53014-07                    | nsp            | R125    |             | 0RD5602F409   | 56K,1/6W,5%,TP52                  | nsp            |
| PN301            |             | 6602V-C02ST | WAFER 2P,P=3.96,HANLIM LW1143-02           | nsp            | R126    |             | 0RD3301F409   | 3.3K,1/6W,5%,TP52                 | nsp            |
| PN302            |             | 6602V-C03ST | WAFER 3P,P=3.96,HANLIM LW1143-03           | nsp            | R127    |             | 0RD1001F409   | 1K,1/6W,5%,TP52                   | nsp            |
| PN501-1          |             | 6602V-D02ST | WAFER 2P,P=7.92,HANLIM LWP1143-02          | nsp            | R128    |             | 0RD4702F409   | 47K,1/6W,5%,TP52                  | nsp            |
| PN503            |             | 6602V-D02ST | WAFER 2P,P=7.92,HANLIM LWP1143-02          | nsp            | R129    |             | 0RD1003G409   | 100K,1/4W,5%,TP52                 | nsp            |
| ▲ T501           | /F          | 6170V-J35IK | POWER TRS. ANS FORMER SUB 35*14            | *TS001450R     | IC101   |             | 0IKE4558DIP   | IC KIA4558                        | HC10008090     |
|                  |             | 6170V-Z35IK | POWER TRS. ANS FORMER SUB 35*15 AC115/230V | *TS001460R     | IC102   |             | 0IKE4558DIP   | IC KIA4558                        | HC10008090     |
| ▲ T501           | /K          |             |  |                | Q101    |             | 0TR3198AHNP   | TRS. C3198                        | nsp            |
| ZD301            |             |             |  |                |         |             | MISCELLANEOUS |                                   |                |
| ∫                |             | 0DZ6210JA09 | ZENER DIODE 6.2V,1W,1N4735                 | *HD301960R     | CN101   |             | 6630V-WPFAJ   | CONNECTOR ASSY 6p                 | nsp            |
| ZD304            |             |             |  |                |         |             |               |                                   |                |
| ZD501            |             | 0DZ5110HA09 | ZENER DIODE 5.1V                           | HD30511000     | JK101   |             | 6800V-SRR08   | JACK JW-6018B                     | YT01080120     |
|                  |             |             |  |                | JK102   |             | 6612V-RWR02   | JACK RCA-2P WH/RD JW-1609DR(4PIN) | *YT002420R     |
|                  |             |             | JACK CIRCUIT BOARD CAPACITORS              |                |         |             |               |                                   |                |
| C101             |             | 0CC2210K405 | CER. 220P,TP                               | nsp            | SW101   |             | 6600V-S2C3P   | SWITCH AUTO-STANDBY CSS-2307A     | *SS000670R     |
| C102             |             | 0CC2210K405 | CER. 220P,TP                               | nsp            |         |             |               |                                   |                |
| C103             |             | 0CE1066H605 | ELECT 10/25,TP                             | nsp            |         |             |               |                                   |                |
| C104             |             | 0CE1066K605 | ELECT 10/50,TP                             | nsp            |         |             |               |                                   |                |
| C105             |             | 0CQ2231N405 | MYLAR 103,TP                               | nsp            |         |             |               |                                   |                |
| C106             |             | 0CE1066H605 | ELECT 10/25,TP                             | nsp            | C201    |             | 0CM6841N403   | MYLAR ME 684,100V                 | nsp            |
| C107             |             | 0CE4766F605 | ELECT 47/16,TP                             | nsp            | C202    |             | 0CQ1841N401   | MYLAR 184,TP                      | nsp            |
| C108             |             | 0CE1066K605 | ELECT 10/50,TP                             | nsp            | C203    |             | 0CQ1541N401   | MYLAR 154,TP                      | nsp            |
| C109             |             | 0CE1076D605 | ELECT 100/10,TP                            | nsp            | C204    |             | 0CQ1541N401   | MYLAR 154,TP                      | nsp            |
| C110             |             | 0CE1066K605 | ELECT 10/50,TP                             | nsp            | C205    |             | 0CE1066K605   | ELECT 10/50,TP                    | nsp            |
| C111             |             | 0CE1066K605 | ELECT 10/50,TP                             | nsp            | C206    |             | 0CE1066K605   | ELECT 10/50,TP                    | nsp            |
| C112             |             | 0CE4766F605 | ELECT 47/16,TP                             | nsp            |         |             |               |                                   |                |
| C113             |             | 0CE1066K605 | ELECT 10/50,TP                             | nsp            |         |             |               |                                   |                |
| C114             |             | 0CK4730K405 | CER. 0.047(C),TP                           | nsp            | R201    |             | 0RD1000F409   | 100,1/6W,5%,TP52                  | nsp            |
| C115             |             | 0CK1030K405 | CER. 0.01(C),TP                            | nsp            | R202    |             | 0RD3301F409   | 3.3K,1/6W,5%,TP52                 | nsp            |
| C116             |             | 0CK1030K405 | CER. 0.01(C),TP                            | nsp            | R203    |             | 0RD3301F409   | 3.3K,1/6W,5%,TP52                 | nsp            |
| C117             |             | 0CK1030K405 | CER. 0.01(C),TP                            | nsp            | R204    |             | 0RD1802F409   | 18K,1/6W,5%,TP52                  | nsp            |
| C118             |             | 0CK1030K405 | CER. 0.01(C),TP                            | nsp            | R205    |             | 0RD5602F409   | 56K,1/6W,5%,TP52                  | nsp            |
|                  |             |             | RESISTORS                                  |                |         |             |               |                                   |                |
| R101             |             | 0RD3901F409 | 3.9K,1/6W,5%,TP52                          | nsp            | IC201   |             | 0IKE4558DIP   | IC KIA4558                        | HC10008090     |
| R102             |             | 0RD1003F409 | 100K,1/                                    |                |         |             |               |                                   |                |

| POS.<br>NO | VERS.<br>COLOR | DESCRIPTION   | PART NO.<br>(MJ) |
|------------|----------------|---|------------------|
| ▲ C601     |                | <b>POWER SWITCH<br/>CIRCUIT BOARD</b><br>0DC4721R6A1 CER.CAP 472/250V | *DK100690R       |
| PN601      |                | 6602V-D02ST WAFER 2P,P=7.92   | nsp              |
| ▲ SW601    |                | 6600V-A2WHS SWITCH POWER TV-3,<br>CLASS I, UL/CSA/BSI/VDE             | SP01010650       |
|            |                | <b>VOLTAGE SELECTOR<br/>CIRCUIT BOARD</b>                             |                  |
| PN701-1    |                | 6602V-D02ST WAFER 2P,P=7.92,HANLIM<br>LWP1143-02                      | nsp              |
| PN701-2    |                | 6602V-D02ST WAFER 2P,P=7.92,HANLIM<br>LWP1143-02                      | nsp              |
| PN701-3    |                | 6602V-D02ST WAFER 2P,P=7.92,HANLIM<br>LWP1143-02                      | nsp              |
| PN702      |                | 6602V-D02AN WAFER 2P,P=7.92<br>HANLIM,LAP1143-02                      | nsp              |
| SW701      |                | 6600V-V6LSS SWITCH,VOLTAGE SEL<br>SDKGA43001,5A/250V                  | *SS000680R       |

NOTE : "nsp" PART IS LISTED FOR REFERENCE ONLY, MARANTZ WILL NOT SUPPLY THESE PARTS.