



Go ahead. Call us uncommon.

NAD has always stood out by doing things our own way. Our relentless pursuit of great sound has earned us a 'giant killer' reputation for outperforming the made-for-the-masses brands. We focus on quality not quantity, so owning NAD products means finding yourself in a very select group. We don't see the point in making ordinary electronics—some people call that uncommon. That's okay with us.

Since 1971, NAD's focus has always been and will remain: Performance, Simplicity, Value.



Music First.

We respect the artist's efforts that result in the music and films that we love. This respect drives our entire product development team and is shaped by Bjorn Erik Edvardsen, our Director of Advanced Development, legendary for his innovations in audio design. If the product doesn't deliver an authentic and moving performance, then we simply haven't done our job. Maybe that's why we have class leading products that exceed expectations.

Keeping it simple.

Performance is one thing—simplicity is another. We insist that a product should be intuitive and easy to use. Our products are void of flash and bling, or useless features, and they don't come in every colour of the rainbow. Our minimalist, understated designs won't confuse you either.

We've got guts.

Everyone knows it's what's inside that counts. By focusing on what really matters and taking a stand against costly gimmicks, we give you thoughtful, solidly designed, unpretentious products at great value. So-called extra features are left out so we can invest in function and quality internal components that deliver great performance.



M2

direct digital amplifier

STEREO AN

NAD M2

coax 1

coax 2

optical 1

optical 2

aes/ebu

balanced

single-ended

load

MASTERS SERIES

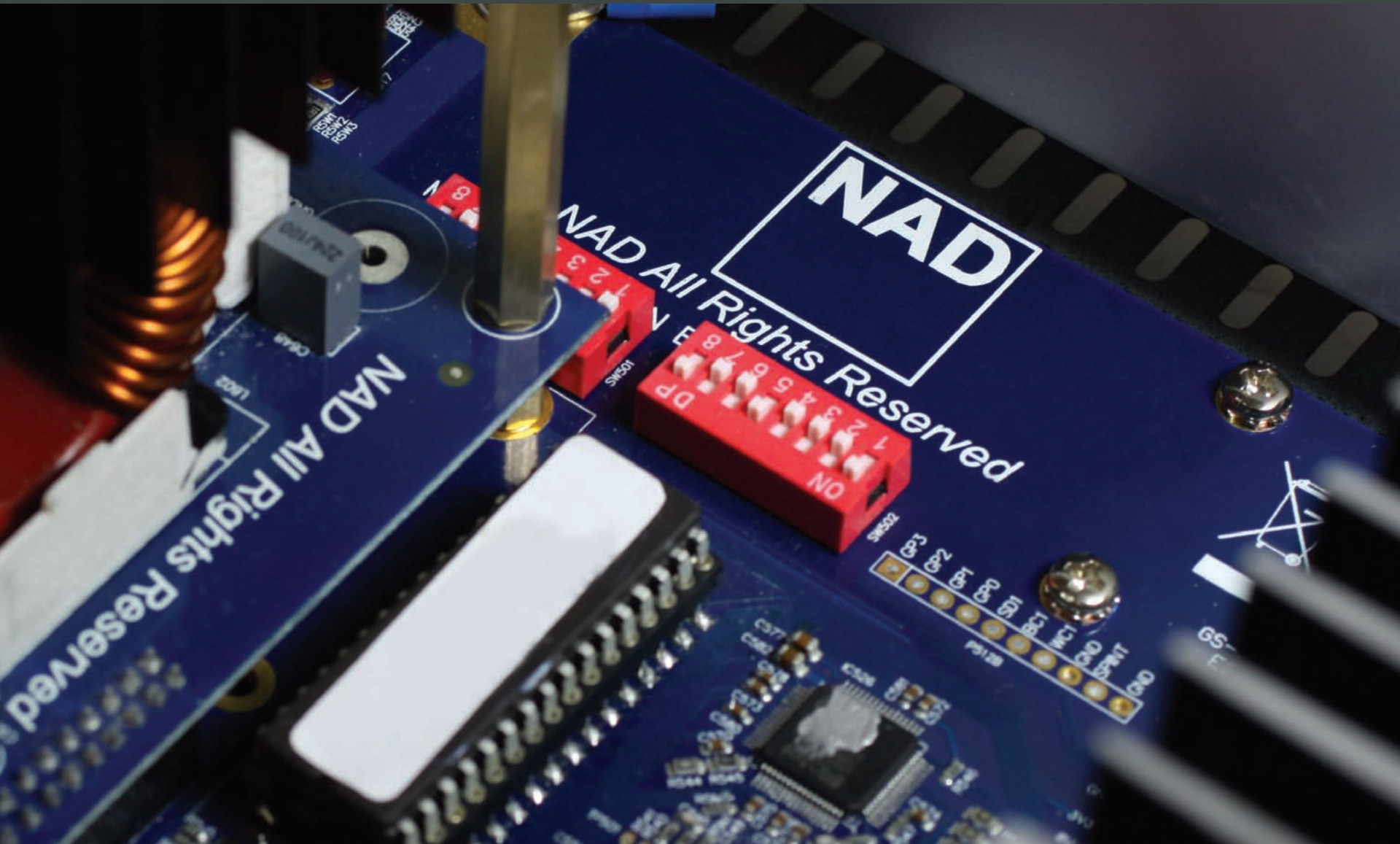
No compromises. Just more.



MASTERS SERIES

M2 Only one who has achieved the highest level
M15 HD in their field can be called a master. True masters
M56 never sit on their accomplishments. Our team
M25 sets extreme goals and then we challenge
M3 ourselves to go even further. The result: a series
M4 of revolutionary technologies, top awards, and
M5 industry firsts. To earn our Masters Series
designation, every component must be no less
than our very best. Should you deserve any less?

The expertise and workmanship that goes into the Masters Series is equally evident in our sleek chassis design. Using high-quality, beautifully finished materials, the Masters Series' clean sculpted lines are a refinement in NAD aesthetics. The ideal synergy of technology and design.



Our top-level technologies and innovations are not exclusive to the Masters Series. You'll find the same DNA throughout our product lines. What we learn from Masters Series development continually trickles down to our Theatre and Classic Series, so you can get premium NAD performance no matter what your budget.



M2 Direct Digital Amplifier

Our new M2 Direct Digital Amplifier ushers in a new era of technology and rewrites the standard for both measured and subjective performance. The result of ten years of research, including three years of intense development, the M2 is superior to earlier digital amplifiers. It is the first to completely utilize the resolution capability of HD audio and a fully digital signal path; the first audio amplifier to use high-speed digital error correction to reduce distortion while maintaining full HD resolution; the first digital amplifier to fully implement digital closed-loop processing (an error correction system); and the first digital amplifier to implement a new technology called Direct Digital Feedback. No wonder we call it the world's most advanced amplifier.



M15 HD AV Surround Sound Preamplifier

Our follow-up to the award-winning M15 is another award-winner. The new M15 HD gives you master performance in high definition—the perfect brains for your surround sound system. The M15 HD also includes our revolutionary Modular Design Construction (MDC), featuring innovative plug-in modules with AV inputs for easy future-proof upgrading.



M56 Blu-ray Disc Player

The M56 brings our drive for performance to Blu-ray. A new addition to the Masters Series, our M56 offers a masterful level of design and build quality that you simply won't find in other Blu-ray players. Super fast loading with sound and picture quality that is nothing short of stunning. Wi-Fi and media streaming from your home network completes a very functional feature set.



MASTERS SERIES



HTR-M Learning Remote Control

Our easy-to-use universal remote features an illuminated LCD screen and the ability to control eight different components with multiple functions. A mini USB interface for advanced programming and easy backup of your setup is included.

Also sold separately.



M25 Seven-Channel Amplifier

Power is critical to sound quality and with all seven channels at 160 continuous watts per channel (Full Disclosure Power), our multiple award-winning M25 is one of the most powerful amplifiers available. The M25 can easily deliver distortion-free, lifelike sound levels for hours on end. Quite simply, the M25 adds another dimension to surround sound that must be heard to be believed.



M4 Analogue Digital Tuner

The M4 is our most sophisticated tuner ever, putting an end to bad interference. The M4 combines a highly sensitive FM/AM tuning section with the most up-to-date digital broadcast technology. It's an ideal match to your Masters Series stereo or surround sound system. FM/AM/DAB (230V version) • XM Ready® (120V version)



M3 Dual Mono Integrated Amplifier

We have developed Bjorn Erik Edvardsen's analogue circuit design to new levels of performance—the result is a total lack of audible noise and distortion. Two channels of 180 watts of pure power (Full Disclosure Power), and a host of convenient features, give you seamless integration into virtually any listening application. The M3 is powerful yet silky smooth.



M5 CD/SACD Player

You won't find a better blend of features and performance than in our M5. This reference CD player will transform your music collection. It will be like hearing your music again for the first time. The M5 supports the latest recorded music formats from SACD to compressed MP3 and WMA.



plifier T 175

VOLUME

NAD T 175

◀ SOURCE ▶

LISTENING
MODE

TONE
CONTROLS

TONE
DEFEAT

FRONT INPUT/
MP

PHONES

FRONT INPUT

HDMI R·D·S MDC

L R (MONO) VIDEO S VIDEO MP/ MIC OPTICAL
AUDIO

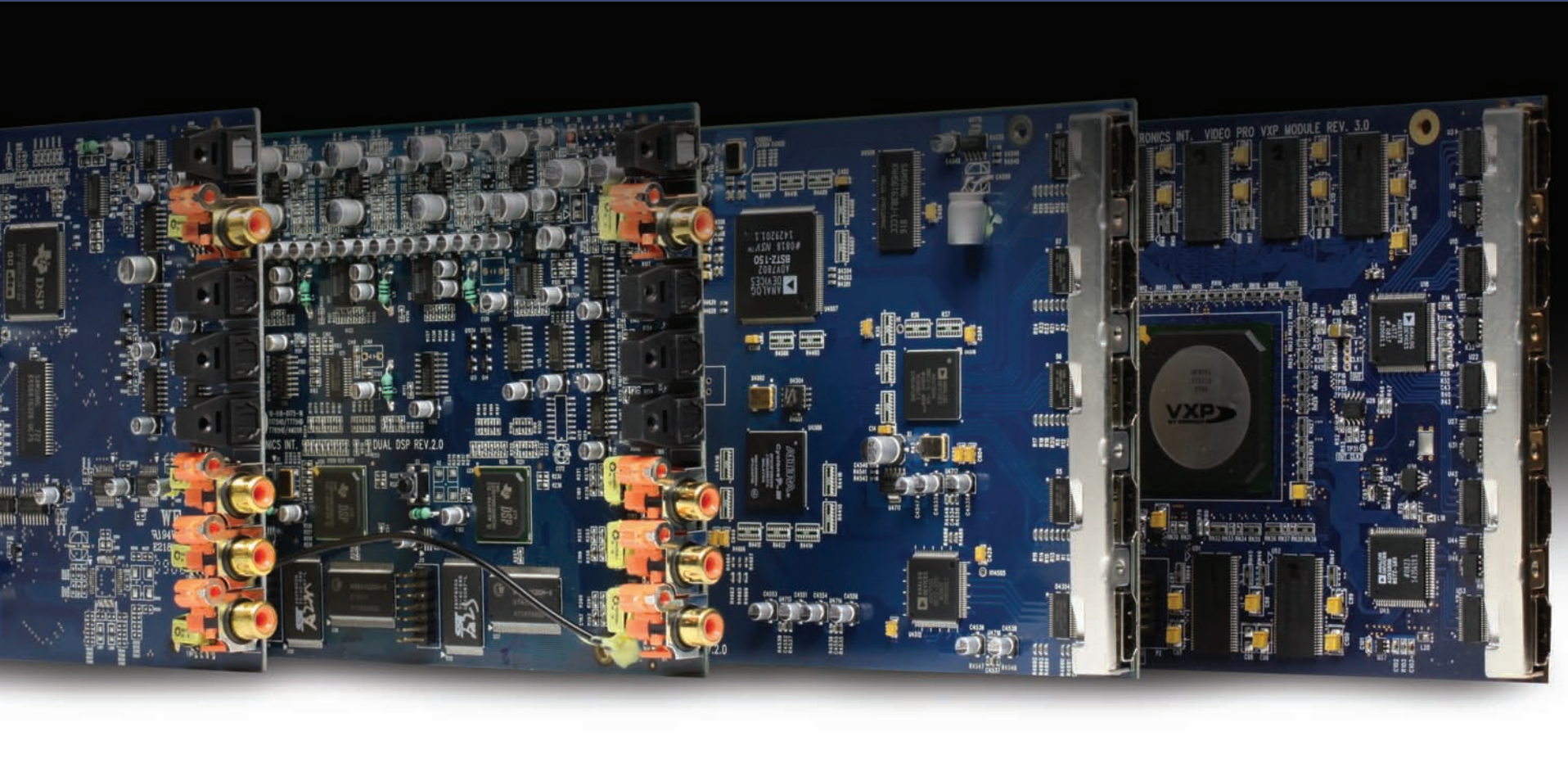
THEATRE SERIES

Enjoy the movie. Without leaving home.



THEATRE SERIES

T 785 At NAD we didn't abandon our 'Music First'
T 775 standards when it came to designing our
T 765 Theatre Series. Some may consider sound
T 175 quality a low priority for home theatre in the
T 747 constant race against new technologies, but
T 737 we know better. After all, how can you lose
T 975 yourself in a film if the sound isn't involving and
T 955 lifelike? Instead of jumping from one tech trend
T 577 to the next, we focus on valuable features with
T 557 real-world benefit. And we do come up with a
few technological tricks of our own.



MDC Upgrade Modules:

AM 100 Audio Module

HD decoding formats for Dolby and DTS, includes high speed DSP and Audyssey Setup.

AM 200 Audio Module

All HD formats, dual high speed DSP, and Audyssey MultEQ XT, Dynamic EQ, and Dynamic Volume.

VM 100 Video Module

HDMI repeater, 4 inputs, resolutions up to 1080p/60, SD analogue conversion to HDMI output and de-interlaces SD video from 480i/576i to 480p/576p.

VM 200 Video Module

Same as VM100, plus Sigma Designs VXP Broadcast Studio Quality Image Processor, and programmable scaling engine.



Change, upgrade, customize. It's up to you.

Our Modular Design Construction makes obsolescence a thing of the past. Available on these select NAD Receivers and Preamp Processors, this simple upgrade solution features input circuitry on easily removable modules, so you can add, change, or customize features and capabilities as they become available. Your system is now future-proof. How's that for thoughtful?



T 785 HD AV Surround Sound Receiver

The MDC-equipped T 785 represents the latest in our high definition home theatre and is designed for those who want the very best. At 120W x 7 channels (Full Disclosure Power), even the largest rooms will be filled with dynamic surround sound.



T 775 HD AV Surround Sound Receiver

Our MDC-equipped high definition T 775 features leading-edge digital technology at 100W x 7 channels (Full Disclosure Power). Flexible enough to serve as the command centre for the most sophisticated home theatre and multi-room systems.



T 765 HD AV Surround Sound Receiver

Our T 765 delivers remarkable high definition performance in a flexible and more compact chassis than its big brothers. At 80W x 7 channels (Full Disclosure Power), the T 765 delivers clean, clear sound. With MDC, it commands respect from any home theatre setup.



T 175 HD AV Surround Sound Tuner Preamp

The high definition T 175 is a fine example of our design team's expertise in digital decoding, video processing, and power amplifier design, for the best overall performance. Get all the control in one compact MDC chassis without sacrificing the convenience of a receiver.



THEATRE SERIES



HTR-3 Learning Remote Control

Our universal remote is able to control up to eight different components with multiple functions. Easy to use and smart enough to learn the commands of any IR remote for any other component.

Also sold separately.



T 747 HD AV Receiver

We designed the no-nonsense T 747 to be amazing value. It offers the very latest high definition features, excellent build quality, and great performance at a very competitive price. 7 x 60W Full Disclosure Power.



T 737 HD AV Receiver

Our budget-minded T 737 is a real winner for its blend of features, quality, and performance. Compared to similarly priced AV receivers, our T 737 is a clear step up from the ordinary. 7 x 40W Full Disclosure Power.



T 975 Seven-Channel Power Amplifier

Our T 975 packs a lot of power and is loaded with features. This high performance amp will provide the musical muscle required for even the most demanding home theatres. 7 x 140W Full Disclosure Power.



T 955 Five-Channel Power Amplifier

We listened to our customers when they said they wanted a powerful, high performance five-channel solution. At 100 watts per channel (Full Disclosure Power), our T 955 delivers—at an affordable price.



T 577 and T 557 Blu-ray Disc Players

With the latest technology, our new Blu-ray players are ahead of the curve. You will find convenience in our instant open, fast loading, and last scene memory features. The T 577 adds 7.1 analogue outputs, Wi-Fi, and media streaming from your PC.



IPD-2 Dock

Get more from your iPod®. In addition to NAD quality sound, you'll get our convenient, user-friendly features, including remote control operation, playlist view on your TV, and recharging.



CLASSIC SERIES

Retro styling. Progressive technology.



CLASSIC SERIES

- C 165BEE** The no frills appearance of our Classic Series might look like we haven't stepped out of the NAD Lab since the '70s, but that's not why this line is so budget-conscious. Our commitment to delivering leading technology and high performance at the best value is core to what we do. With a bloodline that can be traced back to our most technologically advanced Masters Series, the Classic Series has a number of new models with believe it or not, a more refined look.
- C 275BEE**
- C 245BEE**
- C 725BEE**
- C 375BEE**
- C 355BEE**
- C 326BEE**
- C 315BEE**
- C 445**
- C 425**
- C 565BEE**
- C 545BEE**
- C 515BEE** Every detail counts when it comes to build quality and ease of use. The result is a series of products that reviewers acclaim and our competitors fear.
- C 555i**
- C 552**



About BEE

Just over ten years ago the first BEE designated integrated amp was debuted. It was a signature piece utilizing the best designs from our engineering team led by Bjorn Erik Edvardsen, our Director of Advanced Development. Erik is legendary for his innovations and created the original models that earned NAD a cult-like following, including our beloved 3020 Amplifier. You'll find that a lot of our Classic Series models bear the initials BEE, denoting these signature designs.



C 165BEE Preamplifier

Our preamplifier impresses with high-class design and a build quality that exceeds the competition—even preamplifiers at twice the price. It is the perfect complement to the C 275BEE with performance that captures reviewers' attention.



C 275BEE Power Amplifier

Our C 275BEE is a powerhouse with amazingly low distortion. It perfectly matches the C 165BEE or can be used to bridge with our C 375BEE for a frightening amount of power.



C 245BEE Power Amplifier

Our C 245BEE has a four-channel architecture that can be configured in many ways. It can be bi-amplified with the C 165BEE for a conventional system or connected to the Zone Output of our AV receivers to drive remote speakers.



C 725BEE Stereo Receiver

Stereo receivers are very functional as the heart of a main music system or the basis for a simple secondary system in another room, like the kitchen. Our C 725BEE neatly combines the designs of our award-winning integrated amplifier and tuner.



IPD-2 Dock
Enjoy listening to all the music on your iPod® with NAD sound quality using our IPD-2.



C 375BEE Integrated Amplifier
Our C 375BEE rewards you with Masters Series technology in a no compromise Classic design. The build quality is extremely rich utilizing proprietary NAD components throughout. It offers audiophile performance and pride of ownership at a very affordable price. Available: **PP375 Preamplifier** for use with turntable.



C 355BEE Integrated Amplifier
Our C 355BEE integrated amplifier has a robust design that offers a solid low distortion performance. Clean and clear sound quality sets a new benchmark for 80 watt designs. This workhorse can be confidently used as the basis for a great system.

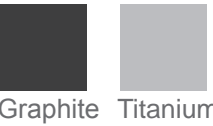


C 326BEE Integrated Amplifier
This award-winning amp design amazes the critics. Audiophile-level performance for those on a budget but unwilling to make a sacrifice. Simply a remarkable amplifier for the money.



C 315BEE Integrated Amplifier
How do you take a fantastic design and make it entry-level affordable? This was our big challenge and the C 315BEE carries it off to perfection.

Graphite is the new black.
We get many comments about the colour of our products and in true NAD style these have been carefully selected. We consulted with both interior and industrial designers to create a Graphite finish that is very neutral in tone, allowing it to blend with your decor. We have also taken equal care in selecting a Titanium colour for our customers in Europe and Asia to suit local tastes.





C 445 Tuner

Dedicated tuners enhance the performance of your radio enormously and our C 445 brings digital radio into your home. DAB is not in all countries but this is a very high quality FM radio too.



C 425 Tuner

Our C 425 has a cult following for those who want fantastic AM/FM radio reproduction. A sleek design and more presets than you can imagine.



C 565BEE CD Player

We set a new standard for top-of-the-line performance with the convenience of both CD and USB playback. This model is for serious owners who appreciate the ability to have full control over their CD player.



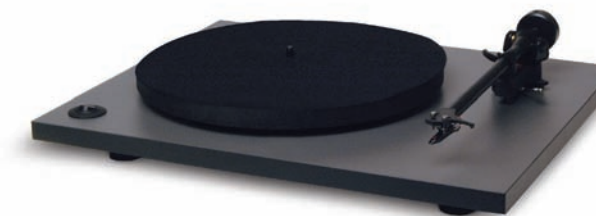
C 545BEE CD Player

Our C 545BEE is taking the market by storm with performance unmatched at this price point. This award-winner simply sounds stunning.



C 515BEE CD Player

Our C 515BEE is the complementary CD player to the C 315BEE. Team them up to create a terrific budget system.



C 555i and C 552 Turntables

Our turntables have everything needed to extract the very best from your vinyl collection. Proven design in a simple package that is unabashedly retro.



DB-1

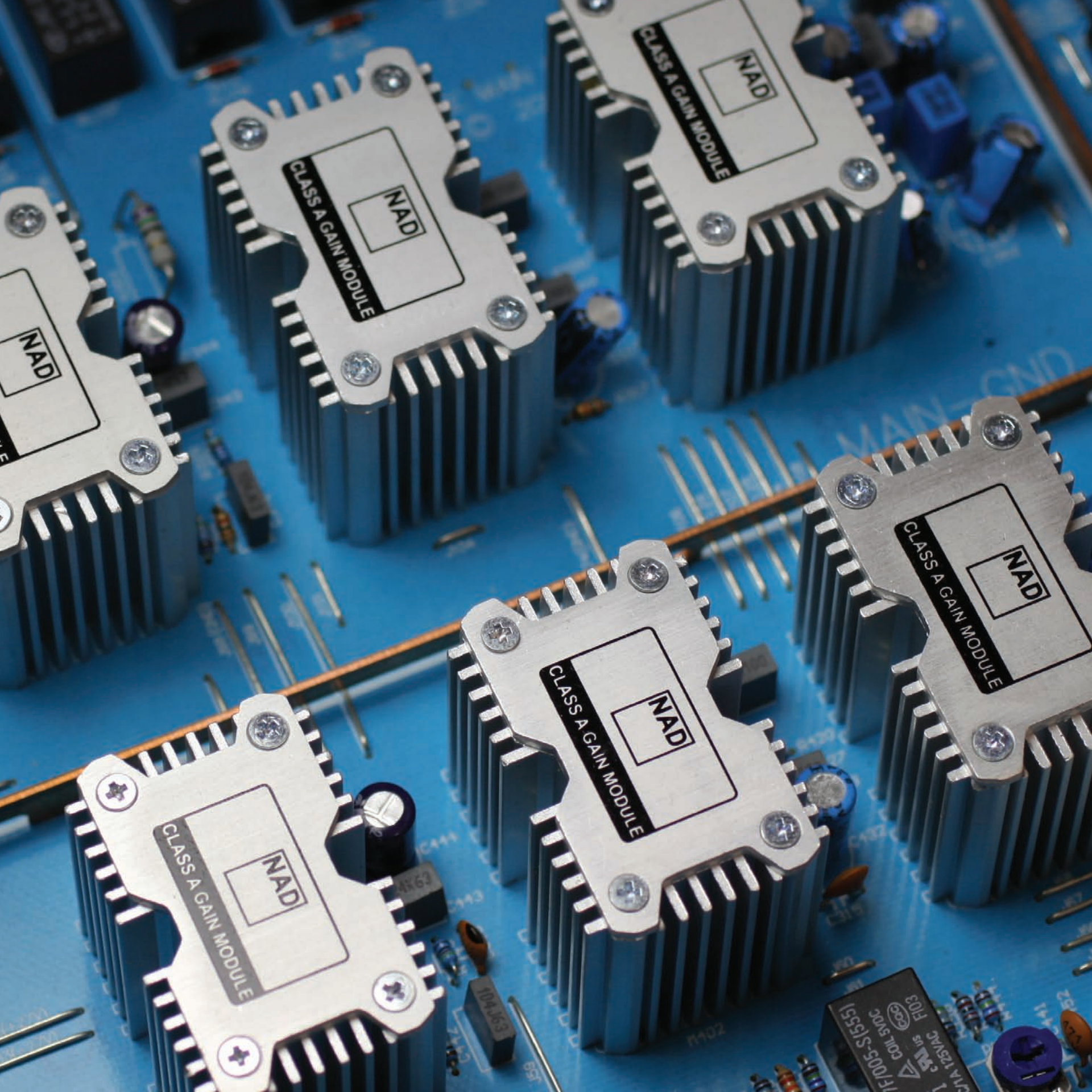
Our DB-1 is a very NAD uncommon approach to adding Digital Radio to your AV receiver or Stereo receiver. This plug-in module ensures the highest quality dedicated DAB as an option.



PP2 and PP3 Phono Preamplifiers

Vinyl LPs are far from dead, especially with our phono preamps. The PP2 delivers MM/MC inputs. The PP3 adds a USB port, so you can easily create MP3s from your LP collection.





NAD TECHNOLOGY

Full Disclosure Power **FDP** FULL DISCLOSURE POWER

We make no secret of being critical of marketing-driven power ratings. In this ‘bigger is better’ world, high power ratings have become king. Yet, these numbers often hide the truth. To give NAD customers a more realistic picture of what they are getting, we have taken another ‘uncommon’ approach to power ratings—Full Disclosure Power (FDP).

Full Disclosure Power ratings live up to a higher standard than those commonly based on the U.S. government's FTC requirements. All our amplifiers and receivers are properly regulated with a high-current power supply, resulting in a continuous 4-ohm load. We measure components with *all channels driven simultaneously* over the full frequency bandwidth (20Hz - 20kHz), and at rated distortion. This is the Full Disclosure Power rating method on which all our amplifier and receiver specs are based. Amplifiers and receivers that do not have high-current designs and typically quote power ratings measured with only one channel driven will distort quickly.

Enhanced Ambience Retrieval System (EARS)

Surround sound offers a number of tricks and effects (‘Hall’, ‘Stadium’, ‘Church’ modes, etc.) that can sound oddly artificial and in our opinion, sound inferior. To keep the sound real the NAD team devised our own music surround mode called Enhanced Ambience Retrieval System (EARS). Utilizing digital signal processing (DSP) technology, we extract the natural ambience of the recording.

PowerDrive™ **PD**

To maximize our real Full Disclosure Power, we’ve developed an amplifier circuit called PowerDrive. Music and films have dynamic passages with everything from a whisper to an explosion. Very little power is required for a whisper, but an explosion demands high-current drive and high dynamic power. To meet such demands, we created our patented PowerDrive amplifier circuit, cementing our reputation for amazingly effective power. By adding a second high voltage rail to our well-regulated, high-current power supply, we get ‘overdrive’ that can nearly double the continuous power for a short term. It’s like having turbo boost for your amplifier or receiver.

PowerDrive takes the stress out of musical and cinematic climaxes by using its incredible power reserves. It also makes our amplifiers and receivers run cooler and more efficiently for greater reliability.

Soft Clipping® **soft** CLIPPING

We understand that no matter how much power we provide, there will always be a demand for more. When an amplifier is overdriven—asked to go beyond its capabilities—the result is distortion or ‘clipping’. This can cause damage to your loudspeakers. Our answer to this is the patented NAD Soft Clipping circuit which, when switched on, will gently transform the sound waveform as the point of clipping approaches. The result is much clearer sound reproduction and simultaneous protection of speakers.



MASTERS SERIES FEATURES & SPECIFICATIONS

AV Preamplifier	M15 HD	Blu-ray Disc Player	M56
MDC-Modular Design Construction®	•	Plays Blu-ray BD ROM, BD-R, BD-RE	•
Dolby TrueHD, Digital Plus/DTS-HD, DTS-HD MA	•	Plays DVD, DVD-R, DVD+R, DVD-RW, DVD+RW	•
NAD EARS, Enhanced Stereo Surround Modes	•	Plays Audio CD, CD-R, CD-RW	•
Switchmode Power Supply	•	Plays MP3, WMA or Photo files as contained in DVD-R/+R/-RW/+RW or CD-R/-RW discs	•
Separate Linear Supply for Analogue Circuitry	•	BD Profile 2.0	•
Audyssey MultEQ Pro Room Correction (Audyssey Installer Ready)	•	BD Live	•
5 A/V Custom Presets	•	MPEG 2, MPEG 4, VC-1	•
Direct Access to Surround/Centre/Sub Volume from Remote	•	DivX, DivX HD	•
AKM High Performance 24bit/192kHz ADC	•	AVCHD	•
Burr-Brown 24bit/192kHz DAC	•	1080p 24Hz/50Hz/60Hz	•
Dual TI Aureus 7.1 DSP (32 bit dual core floating point design)	•	PAL/NTSC 50/60 Hz Auto Switching	•
Digital Audio Input - Coax/Optical	• (4/4)	Picture-in-Picture mixed HD/SD (BD Live)	•
Digital Output - Coax/ TOSLINK)	• (2/2)	Plays MP3, WMA, MPEG 1/2 L2	•
Analogue Video to HDMI Conversion	•	Dolby TrueHD, Digital Plus Decoding	•
Video Monitor Output (Composite, S-Video, Component, HDMI)	•	DTS-HD, DTS-MA 7.1 Decoding	•
Cross Conversion of All Analogue Video Formats	•	Dolby TrueHD, Dolby Digital bitstream digital out (via HDMI)	•
7.1 Analogue Input (for DVD Audio/SACD/ETC.)	•	DTS-HD, DTS-MA 7.1 bitstream digital out (via HDMI)	•
Analogue Stereo Audio Input	7	Auto switch from PCM to Bitstream	•
HDMI 1.3 Digital Input (supports 1080p bandwidth)	4	DVD video up-conversion to 480p/576p, 720p or 1080i via Component Video OUT	•
HDMI On-Screen Display capability	•	DVD video up-conversion to 480p/576p, 720p, 1080i or 1080p via HDMI	•
Analogue Video Input - Composite/S-Video	• (4/4)	HDMI V1.3 Output supports Deep Colour and xvYCC	•
Component Video Input	3	Component Video Output with Progressive Scan option	•
Analogue Video Output (Composite/S-Video/Composite Zone Out)	• (1/1/1)	Composite Video Output	•
Zone 2 A/V Line Level Out-Independent Source/Volume Control	•	Coaxial and Optical digital output	•
Digital Input available as 2 Ch. analogue mixdown on Zone 2	•	2 channel analogue output (mixdown)	•
Analogue Stereo Audio Out	2	7.1 channel analogue output	•
Assignable Zone 3 & 4 Out - Independent Source & Volume via OSD	•	12 bit 148MHz Video DAC	•
12V Trigger (IN/OUT)	• (1/3)	24 bit 192kHz Audio DAC	•
IR (IN/OUT)	• (1/4)	Ethernet Port	•
RS-232 Port Interface for Advanced Control Systems / Upgrades	•	Wi-Fi Media Streaming from PC	•
Preamp Output for all 7.2 Channels (2 Subs)	•	USB Port	•
HTR-M Illuminated Learning Remote Control with LCD Display	•	IR Input	•
2nd Zone Remote - discrete codes for independent zone	•	Fast Loading and Instant Open	•
IEC Detachable AC Power Cord	•	Last Scene Memory, Cinema Zoom, Marker, Marker Search	•
		Smooth Scan and Slow Motion	•
		Screen Saver	•
		Auto Off	•
		IEC Detachable AC Power Cord	•
		BR 2 Remote Control	•

* Minimum Continuous Power into 4 / 8 ohms, all channels driven simultaneously (20Hz-20kHz)

Direct Digital Amplifier, Power Amplifier and Integrated Amplifier	M2	M25	M3
NAD Full Disclosure Power*	2 x 200W	7 x 160W	2 x 180W
NAD PowerDrive™	•	•	•
Holmgren Toroidal Transformer	–	1	2
Universal Switchmode Power Supply	•	–	–
NAD Soft Clipping®	•	•	N/A
Digital Audio Input - Coax/Optical	• (2/3)	N/A	N/A
Digital Output - Coax/ TOSLINK)	• (1/1)	N/A	N/A
Digital Audio Input - AES/EBU	1	N/A	–
Speaker A + B Switching (Speakers B)	N/A	N/A	•
Analogue Stereo Audio Input	1	N/A	6
Balanced Audio Input	1	N/A	1
Zone 2 A/V Line Level Out-Independent Source/Volume Control	N/A	N/A	•
12V Trigger (IN/OUT)	• (1/1)	• (1/-)	• (-/1)
IR (IN/OUT)	• (1/-)	N/A	• (1/2)
RS-232 Port Interface for Advanced Control Systems / Upgrades	•	N/A	•
System Remote	•	N/A	•
2nd Zone Remote - discrete codes for independent zone	N/A	N/A	•
IEC Detachable AC Power Cord	•	•	•

Tuner	M4 (230V)	M4 (120V)
FM/AM Tuner	•	•
DAB Tuner	•	–
XM Ready	–	•
Individual Antenna Inputs for FM, AM and DAB	•	–
DAB Favourite Station Memory	•	–
FM / AM Station Presets	•	•
RDS PS and RT for FM Broadcast	•	•
2 Line Dot Matrix Display	•	•
Optical/Coaxial Digital Output	•	–
Burr-Brown DAC	•	–
MOS-FET RF Front End	•	•
IR Input	•	•
12V Trigger IN	•	•
RS-232 Interface	•	•
Sleep Mode	•	•
Full Remote Control	•	•
IEC Detachable AC Power Cord	•	•

SACD/CD Player	M5
Plays SACD, CD, CD-R and CD-RW	•
MP3 / WMA Decoder Integrated	•
HDCD Decoder Integrated	•
24bit 192kHz Sigma Delta DAC	•
Separate Power Supplies for Analogue and Digital Sections	•
Repeat Function – 1 song / 1 disc	•
Repeat Function – A - B	•
Program Play / Random Play	•
Forward / Reverse Skip / Search Function	•
Coaxial and Optical Digital Output (CD only)	•
Digital Audio Output - AES/EBU	•
5.1 Output for SACD	•
2 Channel Analogue Out	•
Balanced Audio Output	•
IR Input	•
12V Trigger	•
Full Function Remote Control	•
IEC Detachable AC Power Cord	•

THEATRE SERIES FEATURES & SPECIFICATIONS

AV Receivers and Preamplifier	T 785	T 775	T 765	T 747	T 737	T 175
NAD Full Disclosure Power*	7 x 120W	7 x 100W	7 x 80W	7 x 60W	7 x 40W	N/A
MDC-Modular Design Construction®	•	•	•	–	–	•
NAD PowerDrive™	•	•	•	–	–	N/A
Holmgren Toroidal Transformer	Dual	•	•	–	–	•
NAD Soft Clipping®	•	•	•	–	–	N/A
Dolby/DTS Surround Modes	•	•	•	•	•	•
Dolby TrueHD, Digital Plus/DTS-HD, DTS-HD MA	•	•	•	•	–	•
NAD EARS and Enhanced Stereo Surround Modes	•	•	•	•	•	•
Auto Setup	–	–	•	–	–	–
Auto Calibration	•	•	–	•	–	•
Audyssey MultEQ XT Room Correction	•	•	–	–	–	•
5 A/V Custom Presets	•	•	•	•	•	•
Direct Access to Surround/Centre/Sub Volume from Remote	•	•	•	–	–	•
Burr-Brown 24bit/96kHz ADC	•	•	•	•	•	•
Burr-Brown 24bit/192kHz DAC	5	5	5	•	•	5
TI Aureus 7.1 DSP (32 bit dual core floating point design)	•	•	•	–	–	•
CirrusLogic 7.1 DSP (32 bit dual core floating point design)	–	–	–	•	•	–
Digital Audio Input (Coax/Optical/Optical front)	• (3/3/1)	• (3/3/1)	• (3/3/1)	• (2/2/1)	• (1/2/1)	• (3/3/1)
Digital Output (Coax/TOSLINK)	• (1/1)	• (1/1)	• (1/1)	• (1/1)	• (-/1)	• (1/1)
Analogue Video to HDMI Conversion	•	•	•	•	–	•
Video Monitor Output (Composite, S-Video, Component, HDMI)	•	•	•	•	•	•
Cross Conversion of All Analogue Video Formats	•	•	•	•	•	•
7.1 Analogue Input (for DVD Audio/SACD/ETC.)	•	•	•	•	–	•
Speaker A + B Switching (Speakers B Stereo)	•	•	•	–	–	N/A
Analogue Stereo Audio Input (Rear Panel/Front panel)	• (6/1)	• (6/1)	• (6/1)	• (5/1)	• (5/1)	• (6/1)
Media Player MP Front Panel Input	•	•	•	•	•	•
Data Port for use with optional NAD IPD-2 Dock for iPod®	•	•	•	•	•	•
HDMI 1.3 Digital Inputs (supports 1080p bandwidth)	4	4	4	4	2 video only	4
HDMI On-Screen Display capability	•	•	•	•	–	•
Analogue Video Input (Composite/S-Video)	• (5/5)	• (5/5)	• (5/5)	• (4/4)	• (4/4)	• (5/5)
Front Panel Analogue Video Input (Composite/S-Video)	• (1/1)	• (1/1)	• (1/1)	• (1/1)	• (1/1)	• (1/1)
Component Video Input	3	3	3	3	3	3
Analogue Video Output (Composite/S-Video)	• (2/2)	• (2/2)	• (2/2)	• (1/1)	• (1/1)	• (2/2)
Zone 2 Video Output (Composite/S-Video)	• (1/-)	• (1/-)	• (1/-)	• (1/1)	–	• (1/-)
Zone 2 A/V Line Level Out-Independent Source/Volume Control	•	•	•	•	–	•
Digital Input available as 2 Ch. analogue mixdown on Zone 2	•	•	–	–	–	•
Analogue Stereo Audio Out	2	2	2	2	2	2
Assignable Zone 3 & 4 Out - Independent Source & Volume via OSD	•	•	•	–	–	•
Assignable Back Surround Amp Channels	•	•	•	•	–	•
12V Trigger (IN/OUT)	• (1/3)	• (1/3)	• (1/3)	• (-/1)	• (-/1)	• (1/3)
IR (IN/OUT)	• (1/3)	• (1/3)	• (1/3)	• (1/2)	• (1/2)	• (1/3)
RS-232 Port Interface for Advanced Control Systems/Upgrades	•	•	•	•	•	•
Preamp Output (Analogue/Subwoofer)	• (7/2)	• (7/2)	• (7/2)	• (7/1)	–	• (7/2)
RDS FM/AM Tuner/XM or DAB Radio Ready	•	•	•	•	•	•
40 Presets with Seamless Direct Access to FM/AM/XM or DAB	•	•	•	–	–	•
Radio Presets (30 AM/30 FM/40 XM/99 DAB)	–	–	–	•	•	–
HTRC-1 Illuminated Learning Remote Control with LCD Display	•	–	–	–	–	•
HTR-3 Illuminated Learning Remote Control	–	•	•	–	–	–
AVR 3 System Remote	–	–	–	•	•	–
ZR-4 2nd Zone Remote - discrete codes for independent zone	•	•	•	–	–	•
ZR-5 2nd Zone Remote - discrete codes for independent zone	–	–	–	•	–	–

Power Amplifiers	T 975	T 955
NAD Full Disclosure Power*	7 x 140W	5 x 100W
NAD PowerDrive™	•	•
Holmgren Toroidal Transformer	•	•
NAD Soft Clipping®	•	•
Analogue Stereo Audio Input (Rear Panel/Front panel)	7 In	5 In

Blu-ray Disc Players	T 577	T 557
Plays Blu-ray BD ROM, BD-R, BD-RE	•	•
Plays DVD, DVD-R, DVD+R, DVD-RW, DVD+RW	•	•
Plays Audio CD, CD-R, CD-RW	•	•
Plays MP3, WMA or Photo in DVD-R/+R/-RW/+RW or CD-R/-RW discs	•	•
BD Profile 2.0	•	•
BD Live	•	•
MPEG 2, MPEG 4, VC-1	•	•
DivX	•	•
DivX HD	•	–
AVCHD	•	•
1080p 24Hz/50Hz/60Hz	•	•
PAL/NTSC 50/60 Hz Auto Switching	•	•
Picture-in-Picture mixed HD/SD (BD Live)	•	•
Plays MP3, WMA, MPEG 1/2 L2	•	•
Dolby TrueHD, Digital Plus Decoding	•	•
DTS-HD, DTS-MA 7.1 Decoding	•	•
Dolby True HD, Dolby Digital bitstream digital out (via HDMI)	•	•
DTS-HD, DTS-MA 7.1 bitstream digital out (via HDMI)	•	•
Auto switch from PCM to Bitstream	•	•
DVD video up-conversion to 480p/576p, 720p or 1080i via Component Video OUT	•	•
DVD video up-conversion to 480p/576p, 720p, 1080i or 1080p via HDMI	•	•
HDMI V1.3 Output supports Deep Colour and xvYCC	•	•
Component Video Output with Progressive Scan option	•	•
Composite Video Output	•	•
Coaxial and Optical digital output	•	•
2 channel analogue output (downmix)	•	•
7.1 channel analogue output	•	–
12 bit 148MHz Video DAC	•	•
24 bit 192kHz Audio DAC	•	•
Ethernet Port	•	•
Wi-Fi Media Streaming from PC	•	–
USB Port	•	•
IR Input	•	•
Fast Loading, Instant Open	•	•
Last Scene Memory, Cinema Zoom, Marker, Marker Search	•	•
Smooth Scan and Slow Motion	•	•
Screen Saver	•	•
Auto Off	•	•
<1W Standby	•	•
IEC Detachable AC Power Cord	•	•
BR 2 Remote Control	•	•

* Minimum Continuous Power into 4 / 8 ohms, all channels driven simultaneously (20Hz-20kHz)

CLASSIC SERIES FEATURES & SPECIFICATIONS

Preamplifier/Power Amplifiers / Integrated Amplifiers / Stereo Receiver	C 165BEE	C 275BEE	C 245BEE	C 375BEE	C 355BEE	C 326BEE	C 315BEE	C 725BEE
NAD Full Disclosure Power*	N/A	2 x 150W	4 x 35W	2 x 150W	2 x 80W	2 x 50W	2 x 40W	2 x 50W
NAD PowerDrive™	N/A	•	–	•	•	•	–	•
NAD PowerDrive-S™	N/A	–	–	–	–	–	•	–
Holmgren Toroidal Transformer	•	•	•	•	•	•	•	•
Bridgeable	N/A	•	•	•	–	–	–	–
A/B Speaker Output	N/A	•	•	•	•	–	–	•
NAD Soft Clipping®	N/A	•	–	•	•	•	–	•
All Discrete Circuitry	•	•	•	•	•	•	•	•
Line Level Input	6	–	–	7	7	7	6	5
Phono Input (MM/MC)	•	–	–	–	–	–	–	–
Tape Output	2	N/A	N/A	2	2	1	1	–
REC/ZONE 2 Out	–	–	–	–	–	–	–	•
Channel (loop-through) Output	–	–	2	–	–	–	–	–
Selectable MM and MC Phono Stage	•	–	–	–	–	–	–	–
3.5mm MP (Media Player) Front Panel Input	–	N/A	N/A	•	•	•	•	•
Data Port for use with optional NAD IPD-2 Dock for iPod®	N/A	N/A	N/A	N/A	N/A	N/A	N/A	•
RDS FM/AM Tuner DAB Radio Ready	N/A	N/A	N/A	N/A	N/A	N/A	N/A	•
40 Presets with Seamless Direct Access to FM/AM/DAB	N/A	N/A	N/A	N/A	N/A	N/A	N/A	•
Bass and Treble Control with Tone Defeat Switch	•	N/A	N/A	•	•	•	•	•
Main Amplifier Input	–	1	2	1	1	1	–	1
Pre-amp Outputs	2	–	–	2	2	1	–	1
Subwoofer Output	1	–	–	–	–	2	–	1
IR In/Out	•	–	–	•	•	•	–	•
12V Trigger Out	•	–	–	•	•	•	–	•
12V Trigger In	–	•	•	–	–	–	–	–
Relay Input Switching	•	•		•	•	•	–	•
ATO Logic	–	•	•	–	–	–	–	–
Headphone Socket	•	–	–	•	•	•	•	•
Gold Plated Sockets	•	•	•	•	•	•	•	•
IEC Detachable Power Cord	•	•	•	•	•	•	–	–
RS-232 Port Interface for advanced control systems	–	–	–	•	•	–	–	•
SR 8 Full System Remote Control	•	N/A	N/A	•	•	•	–	•
AMP 1 Remote Control	–	N/A	N/A	–	–	–	•	–

Tuners	C 445	C 425
FM/AM Tuner	•	•
DAB Tuner	•	–
Individual Antenna Input	•	•
DAB Favourite Station Memory	99	–
FM/AM Station Presets	30/30	30 (mix)
RDS PS and RT for FM Broadcast	•	•
2 Line Dot Matrix Display	•	–
Optical Digital Output	•	–
Audiophile Quality DAC	•	–
MOS-FET RF Front End	•	–
IR Input	–	•
RS-232 Interface	–	•
Sleep Mode	–	•
Full Remote Control	•	•

CD Players	C 565BEE	C 545BEE	C 515BEE
Plays CD, CD-R and CD-RW	•	•	•
MP3/WMA Decoder Integrated	•	•	•
Sample Rate Conversion to 96kHz/192kHz	•	–	–
24bit/192kHz Sigma Delta DAC	–	•	•
Dual differential 24bit/192kHz Sigma Delta DACs	•	–	–
Separate Power Regulators for Analogue and Digital Sections	•	•	•
Repeat Function – 1 song/1 disc	•	•	•
Repeat Function – A - B	•	•	•
Program Play/Random Play	•	•	•
Forward/Reverse Skip/Search Function	•	•	•
Digital Output (Coax/Optical)	• (1/1)	• (1/1)	• (1/1)
Optical Digital Input	•	–	–
USB Input (MP3/WMA 384kbs VBR)	•	–	–
IR In	•	•	–
12V Trigger In	•	•	–
RS-232 Interface	•	–	–
Full Function Remote Control	•	•	•

NAD Electronics International reserves the right to change specifications or features without notice as design improvements are incorporated. Specifications are measured in accordance with EIA Standard RS-490 (IHF A-202) for amplifiers. For further product information and full technical details on our complete line of products, please visit our website at www.NADelectronics.com.

NAD MDC-Modular Design Construction and NAD Soft Clipping are registered trademarks of NAD Electronics International. All rights reserved.

MultEQ Pro, MultEQ XT, MultEQ are registered trademarks of Audyssey Laboratories, Inc. Dolby TrueHD, Dolby Digital Plus, Dolby Digital, Dolby Digital EX, Dolby Pro Logic II, Dolby Pro Logic IIx and the double-D symbol are registered trademarks of Dolby Laboratories. DTS is a registered trademark and the DTS logos, Symbol, DTS-HD, DTS-HD Master Audio, DTS-ES, DTS Digital Surround | 96/24, DTS Digital Surround, and DTS Neo:6, are trademarks of DTS, Inc. iPod and Made for iPod logo are trademarks of Apple Inc., registered in the U.S. and other countries. HDMI, the HDMI logo and High-Definition Multimedia Interface are trademarks or registered trademarks of HDMI Licensing, LLC. Microsoft, HDCD, and the HDCD logo are trademarks or registered trademarks of Microsoft Corporation in the United States and/or other countries. Blu-ray Disc is a trademark of Sony Corporation. DivX and associated logos are registered trademarks of DivX, Inc. Aureus is a trademark of Texas Instruments. Cirrus Logic is the trademark of Cirrus Logic, Inc. MP3 audio compression technology licensed by Fraunhofer IIS-A. XM Ready is a registered trademark of XM Satellite Radio Inc. All other trademark and symbols are the property of their respective rights holders. All rights reserved.

* Minimum Continuous Power into 4 / 8 ohms, all channels driven simultaneously (20Hz-20kHz)

NAD is an uncommon company.

Founded in Germany in 1971 with the uncommon goal of bringing accurate music reproduction to our customers, NAD is now sold and serviced in over 80 countries. From our modest beginnings, NAD has evolved into an industry leader, designing and creating a full line of innovative audio and video consumer electronics with a strong 'Music First' conviction. We believe that great design shouldn't have to come at a high cost. We design every NAD product to have the best possible **performance**, functional **simplicity** and **value** for money.



www.NADelectronics.com