

Service
Service
Service



Service Manual



CONTENTS

Main Board
circuit diagram
layout diagram

Service partslist
Initial Bom list

© Copyright 2007 Philips Consumer Electronics B.V. Eindhoven, The Netherlands
All rights reserved. No part of this publication may be reproduced, stored in a retrieval system or transmitted, in any form or by any means, electronic, mechanical, photocopying, or otherwise without the prior permission of Philips.

Published by LX 0721 Service Audio Subject to modification

**CLASS 1
LASER PRODUCT**

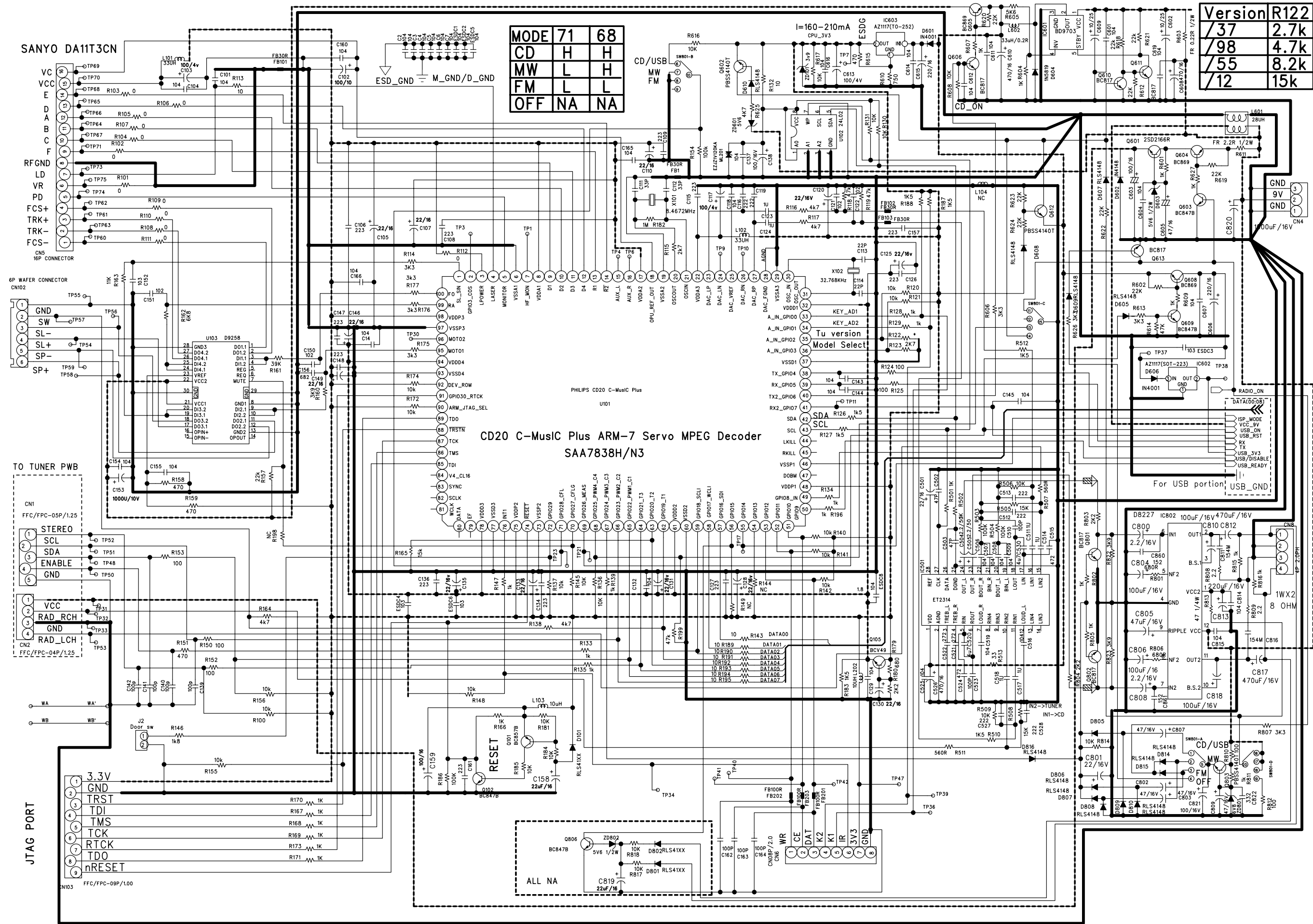
GB 3141 785 31851

Version 1.1

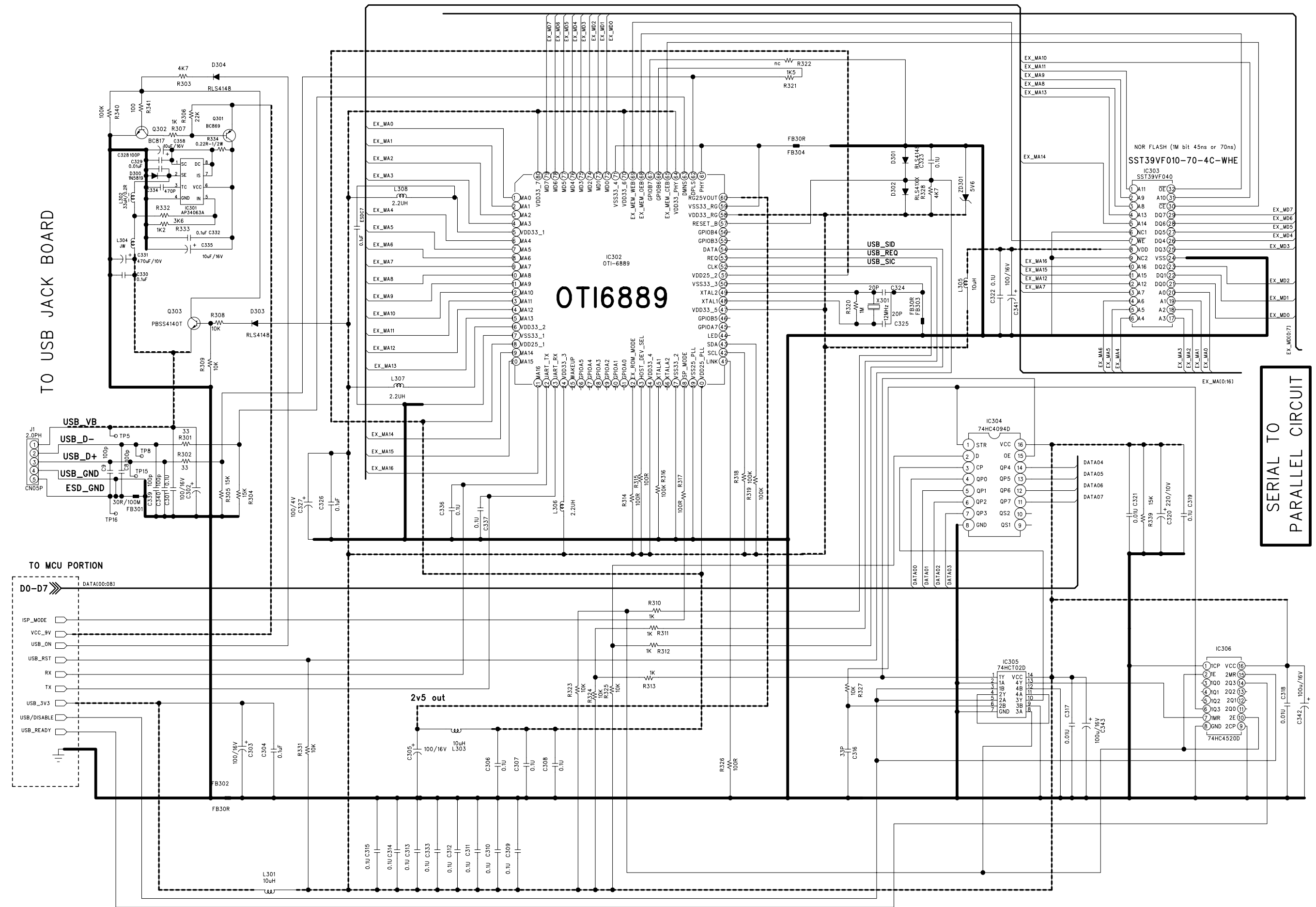


PHILIPS

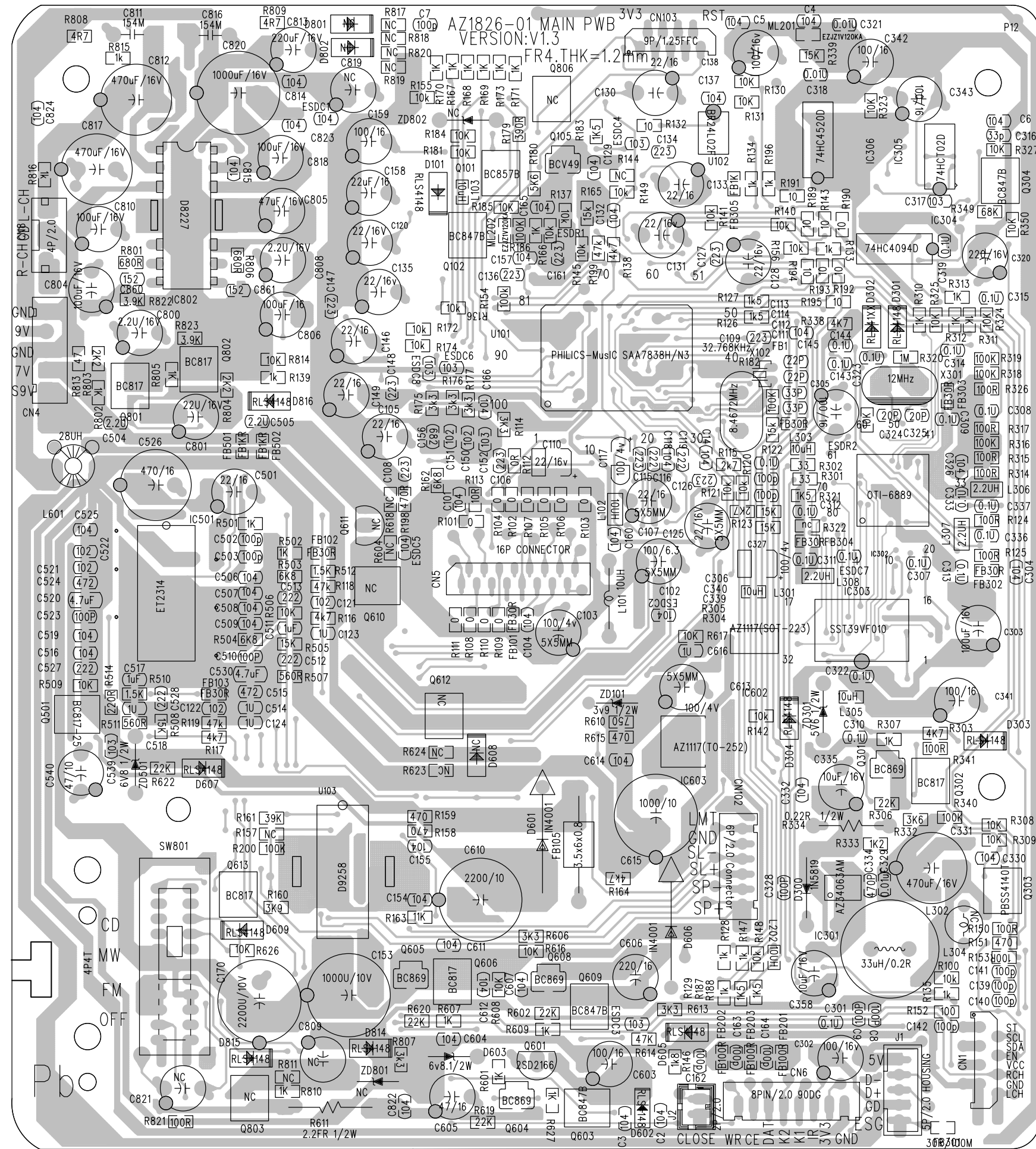
CIRCUIT DIAGRAM - MAIN BOARD
PART 1



CIRCUIT DIAGRAM - MAIN BOARD
PART 2



LAYOUT DIAGRAM - MAIN BOARD



Service parts list

CDD	996510003617	CD DOOR
CDM	996500041911	CD MECHANISM DA11B3VF.
CDS	994000001599	CD DOOR SW DLS-02-W-1 1P1T
CORD	994000002182	AC CORD SAA(-/79)
CORD	994000003386	AC CORD VDE 230V(-/55)
DAM1	996510003619	CD DAMPER PURPLE 18DEGREE
DAM2	996510003620	CD DAMPER GREENE 25DEGREE
DOB	996510003618	DOOR-BATTERY
PCB1	996510003612	MAIN PWB ASSEMBLY
PCB2	996510003613	TUNER/RECTIFIER/SPK CONNECT(-/79)
PCB2	996510005231	TUNER PORTION (-/55)
PCB3	996510003614	DISPLAY PWB ASSEMBLY
POW	996510003616	POWER TRANSFORMER EI-41 AC230V (-/79)
POW	996510005232	POWER TRANSFORMER EI-41 127/230V(-/55)
RE	996510002086	REMOTE CONTROL FOR AZ1826
ROD	994000001468	ROD ANTENNA
SPEA	996510003615	SPEAKER 4", 8OHM, 3W.(BLUE)
DFGG	996510000132	CONVERSION MAINS PLUG ADAPTOR (-/55)
GIFTBOX	996510005233	DISPLAY BOX CMYK PRINTING (-/55)

Note: Only these parts mentioned in the list are normal service parts.

Level	Item	MatGrp	Component	Desc	Location
0.1	10	ASSY	8900-070100100	ELECTRICAL SECTION OF AZ1826/12	
..2	10	ASSY	8901-070100100	MAIN PWB ASSEMBLY OF AZ1826/12	
....3	10	PWB	3702-182630130	MAIN PWB 149.1X151.2X1.2MM DOUBLE SIDE FR4 AZ1826-01 V1.4	
....3	20	ASSY	8903-070100100	CD/MCU PORTION OF AZ1826/12	
....4	10	CAP	1121-220081020	CH-CAP, CER22PF50V+/-5%0603 NPO	C113,C114
....4	20	CAP	1121-330081020	CH-CAP, CER33PF50V+/-5%0603	C111,C112
....4	30	CAP	1121-101081020	CH-CAP, CER100PF50V+/-5%0603	C7,C139,C140,C141,C142,C162,C163,C164
....4	40	CAP	1121-102081020	CH-CAP, CER 1000PF50V+/-5%0603	C121,C122,C150,C151,C179
....4	50	CAP	1121-222082020	CH-CAP, CER 2200PF50V+/-10%0603	C116,C119
....4	60	CAP	1121-682082020	CH-CAP, CER6800PF50V+/-10%0603	C156
....4	70	CAP	1121-103082020	CH-CAP, CER0.01UF50V+/-10%0603	C152,ESDC3,ESDC4,ESDC6,ESDC8
....4	80	CAP	1121-223082020	CH-CAP, CER 0.022UF 50V +/-10% 0603	C106,C108,C109,C115,C126,C127,C134,C136,C147,C148
....4	85	CAP	1121-333082020	CH-CAP, CER0.033UF50V+/-10%0603	C174
....4	90	CAP	1121-104084020	CH-CAP, CER0.1UF50V+80%-20%0603	C2,C3,C4,C5,C6,C14,C101,C104,C118,C129,C132,C137,C143,C144,C145,C154,C155,C157,C160,C165,C166,C176,C180,ESDC1,ESDC2,ESDC5
....4	100	CAP	1121-105044020	CH-CAP, CER1UF10V +80%/-20%0603	C123,C124,C177
....4	120	CAP	1123-226053051	TANT. CH-CAP 22UF 16V +/-20% 3528-B	C110
....4	130	CAP	1123-107013050	TANT. CH-CAP 100UF 4V +/-20% 3216-A	C117
....4	135	CAP	1112-226033020	CAP, ELECT, 22UF6.3V+/-20%4X5MM	C107,C125
....4	140	CAP	1132-226053060	CAP ELECT, 22UF 16V +/-20% 5X11	C105,C120,C128,C131,C133,C135,C146,C149
....4	150	CAP	1132-107053080	CAP ELECT,100UF 16V +/-20% 6.3X5	C130,C138,C159
....4	160	CAP	1112-107033040	CAP, ELECT, 100UF6.3V+/-20%DIP 5X5	C102,C103
....4	170	CAP	1112-108043290	CAP,ELECT, 1000UF10V+/-20%8X14	C153
....4	175	CAP	1112-228043160	CAP,ELECT, 2200UF10V+/-20%10X20	C170
....4	180	RES	1221-000062020	CH-RES,0 OHM1/16W+/-5%0603	R101,R102,R103,R104,R105,R106,R107,R108,R109,R110,R111,R112,R205
....4	190	RES	1221-100062020	CH-RES,10R1/16W+/-5%0603	R113,R132,R143,R189,R190,R191,R192,R193,R194,R195
....4	200	RES	1221-101062020	CH-RES,100R1/16W+/-5%0603	R124,R125,R150,R152,R153
....4	210	RES	1221-471062020	CH-RES,470R1/16W+/-5%0603	R151,R158,R159,R198
....4	230	RES	1221-102062020	CH-RES,1K1/16W+/-5%0603	R128,R129,R133,R134,R135,R139,R147,R167,R168,R169,R170,R171,R173,R179,R196,R202,R203
....4	240	RES	1221-152062020	CH-RES,1.5K1/16W+/-5%0603	R126,R127,R183,R187,R188
....4	250	RES	1221-182062020	CH-RES,1.8K1/16W+/-5%0603	R146
....4	270	RES	1221-272062020	CH-RES,2.7K1/16W+/-5%0603	R115,R123
....4	280	RES	1221-332062020	CH-RES,3.3K1/16W+/-5%0603	R114,R145,R175,R176,R177
....4	290	RES	1221-392062020	CH-RES,3.9K1/16W+/-5%0603	R160
....4	300	RES	1221-472062020	CH-RES,4.7K1/16W+/-5%0603	R116,R117,R138,R164,R204
....4	305	RES	1221-682062020	CH-RES,6.8K1/16W+/-5%0603	R162
....4	310	RES	1221-103062020	CH-RES,10K1/16W+/-5%0603	R100,R120,R121,R130,R131,R136,R137,R140,R141,R142,R148,R149,R155,R156,R172,R174,ESDR1,ESDR2
....4	315	RES	1221-113062020	CH-RES, 11K1/16W+/-5%0603	R163
....4	320	RES	1221-153062020	CH-RES,15K1/16W+/-5%0603	R122,R165
....4	325	RES	1221-223062020	CH-RES,22K1/16W+/-5%0603	R180,R201
....4	330	RES	1221-393062020	CH-RES,39K1/16W+/-5%0603	R161
....4	340	RES	1221-473062020	CH-RES,47K1/16W+/-5%0603	R118,R119,R199
....4	350	RES	1221-104062020	CH-RES,100K1/16W+/-5%0603	R154,R186,R182,R200
....4	370	FRP	1604-100072000	RADIAL AXIAL TYPE INDUCTOR 10UH HC0 L101	
....4	380	FRP	1606-100185000	CHOCK COIL 10UH Q=30 DCR=1.85OHM 06 L103,L202	
....4	385	FRP	1606-100115000	CHOCK COIL 10UH Q=50 DCR=1.15OHM 08 L102,L104	
....4	390	DISCRETE	1321-041480020	CH-DIODE RLS4148 LL-34	D105
....4	400	ELECTO	3601-106000010	CH-MULT.VAR.EZJZ1V120KA 10.6-15.4V 06 ML201,ML202	
....4	420	DISCRETE	1421-008570020	CH-TRANSISTOR, BC857C	Q110
....4	430	DISCRETE	1422-000490000	CH-TRANSISTOR NPN BCV49 SOT89	Q105

....4	440 FRP	1001-084672210	CRYSTAL, 8.4672MHZ +/-20PPM 30PF	X101
....4	450 FRP	1001-000327200	CRYSTAL, 32.768KHZ +/-20PPM 12PF	X102
....4	460 SEMICON	1509-007838000	IC SAA7838H/N3 MCU+MP3/WMA DECODE	U101
....4	470 MEMORY	1511-002402030	IC, BR24L02F-WE2	U102
....4	480 SEMICON	1503-009258000	IC, D9258 MOTOR DRIVERCD	U103
....4	481 SEMICON	1508-060028000	IC RESET AAT60028AS5 SOT23-5	U104
....4	485 FRP	2105-000000030	FILTER BEAD RH3.5X6X0.8	FB105
....4	490 ELECTO	3101-200621010	HEADER 6PIN 2.0MM STRAIGHT	CN102
....4	500 ELECTO	3101-200221010	HEADER 2PIN 2.0MM STRAIGHT	J2
....4	510 ELECTO	3101-101611000	HEADER 16PIN 1.00 NOZIF FPC CONNECT	CN5
....4	520 ELECTO	3101-200811000	HEADER 8PIN P=2.0MM 90DEGREE	CN6
....4	540 ELECTO	3106-120821000	FFC CONNECTOR 8PIN W/1.25MM WHITE	CN1
....4	560 FRP	2721-300020000	FERRITE BEAD SMD 30OHM +/-25%/100MH	FB1,FB101,FB102,FB103
....4	570 FRP	2721-101020000	FERRITE BEAD SMD 100OHM +/-25%/100M	FB201,FB202,FB203
....4	580 METAL	6600-050700200	IC HEAT SINK	TOU103
....3	30 ASSY	8931-070100100	USB PORTION ASSEMBLY OF AZ1826/12	
....4	10 CAP	1132-107043050	CAP ELECT, 100UF 10V +/-20% 5X7	C305
....4	11 CAP	1112-107033040	CAP, ELECT, 100UF6.3V +/-20%DIP 5X5	C303,C341
....4	15 CAP	1121-103082020	CH-CAP, CER0.01UF50V +/-10%0603	C317,C318,C321,C329 C301,C304,C306,C307,C308,C309,C310,C311,C312,C313,C314,C315,C319,C322,C323,C326,C330,C332,C333,C336,C337,ESDC7
....4	20 CAP	1121-104084020	CH-CAP, CER0.1UF50V+80%-20%0603	C8,C9,C328,C339,C340
....4	30 CAP	1121-101081020	CH-CAP, CER100PF50V +/-5%0603	C324,C325
....4	40 CAP	1121-200081020	CH-CAP, CER20PF50V +/-5%0603	C316
....4	50 CAP	1121-330081020	CH-CAP, CER33PF50V +/-5%0603	C334
....4	60 CAP	1121-471081020	CH-CAP, CER470PF50V +/-5%0603	C335,C358
....4	70 CAP	1132-106053060	CAP ELECT, 10UF 16V +/-20% 5X11	C302,C342,C343
....4	90 CAP	1132-107053060	CAP ELECT, 100UF 16V +/-20% 5X11	C320
....4	110 CAP	1132-227053060	CAP ELECT, 220UF 16V +/-20% 5X11	C331
....4	115 CAP	1132-477053220	CAP ELECT,470UF 16V +/-20% 8X12	C327
....4	120 CAP	1123-107013050	TANT. CH-CAP 100UF 4V +/-20% 3216-A TY	R301,R302
....4	130 RES	1221-330062020	CH-RES,33R1/16W +/-5%0603	R314,R315,R317,R326,R341
....4	140 RES	1221-101062020	CH-RES,100R1/16W +/-5%0603	R307,R310,R311,R312,R313,R341
....4	150 RES	1221-102062020	CH-RES,1K1/16W +/-5%0603	R333
....4	160 RES	1221-122062020	CH-RES,1.2K1/16W +/-5%0603	R321
....4	170 RES	1221-152062020	CH-RES,1.5K1/16W +/-5%0603	R332
....4	180 RES	1221-362062020	CH-RES,3.6K1/16W +/-5%0603	R303,R338
....4	190 RES	1221-472062020	CH-RES,4.7K1/16W +/-5%0603	R308,R309,R323,R324,R325,R327,R340,R350
....4	200 RES	1221-103061020	CH-RES, 10K1/16W +/-1%0603	R304,R305,R339
....4	210 RES	1221-153061020	CH-RES,15K1/16W +/-1%0603	R306
....4	220 RES	1221-223062020	CH-RES,22K1/16W +/-5%0603	R349
....4	225 RES	1221-683062020	CH-RES, 68K1/16W +/-5%0603	R316,R318,R319
....4	230 RES	1221-104062020	CH-RES,100K1/16W +/-5%0603	R320
....4	240 RES	1221-105062020	CH-RES,1M1/16W +/-5%0603	R334
....4	250 RES	1211-022002201	RES,0.22R 1/4W +/-5%	X301
....4	260 FRP	1001-120000200	CRYSTAL 12MHZ HC-49/S 20PF +/-20PPM	D300
....4	270 DISCRETE	1312-158190000	DIODE 1N5819 DO-41	ZD301
....4	280 DISCRETE	1313-079560020	ZENER DIODE BZX79-C5V6	D301,D302,D303,D304
....4	290 DISCRETE	1321-041480020	CH-DIODE RLS4148 LL-34	Q301
....4	300 DISCRETE	1421-008690000	CH-TRANSISTOR PNP BC869 SOT-89	Q302
....4	310 DISCRETE	1422-817250000	CH-TRANSISTOR,BC817-25	Q303
....4	320 DISCRETE	1422-041400010	CH-TRANSISTOR, PBSS4140T (9340565142	Q304
....4	325 DISCRETE	1422-008470010	CH-TRANSISTOR, BC847C SOT-23.	IC301
....4	330 SEMICON	1505-034063020	IC AZ34063AM-E1 DC-TO-DC CONVERTER	IC302
....4	340 SEMICON	1509-006889000	IC, OTI-6889 USB DECODER TQFP-80	IC303
....4	350 SEMICON	1511-390107000	IC 1M FLASH MEM SST39VF010-70-4C-WH	IC304
....4	360 MEMORY	1511-744094000	IC 74HC4094D MEMORY(PHILIPS)(9337148	IC305
....4	370 SEMICON	1508-007402000	IC, 74HC02D NOR GATE CMOS(PHILIPS) S	IC306
....4	380 SEMICON	1508-744520000	IC, 74HC4520D HIGH SPEED CMOS(PHILIP	L302
....4	390 FRP	1614-330005000	POWER INDUCTOR, 1014P-330K 33UH DIP	L301,L303,L305
....4	400 FRP	1606-100185000	CHOCK COIL 10UH Q=30 DCR=1.85OHM 06	L306,L307,L308
....4	420 FRP	1601-022080000	CH-INDUCTOR,MULTILAYER,2.2UH,210MA,	FB301,FB302,FB303,FB304
....4	430 FRP	2721-300020000	FERRITE BEAD SMD 30OHM +/-25%/100MH	

....4	435 FRP	2721-102020000	FERRITE BEAD SMD 1K+/-25%/100MHZ 06C FB305	
....4	440 ELECTO	3101-200521010	HEADER 5PIN 2.0MM STRAIGHT	J1
...3	40 ASSY	8923-070100100	AUDIO PROCESSOR PORTION OF AZ1826/12	
....4	10 CAP	1121-101081020	CH-CAP, CER100PF50V+/-5%0603	C502,C503,C510,C523
....4	20 CAP	1121-222082020	CH-CAP, CER 2200PF50V+/-10%0603	C512,C513,C527,C528
....4	30 CAP	1121-821081020	CAP, CER 820PF50V+/-5%0603	C521,C522
....4	40 CAP	1121-472082020	CH-CAP, CER4700PF50V+/-10%0603	C515,C524
....4	50 CAP	1121-103084020	CH-CAP, CER0.01UF50V+80%-20%0603	C539
....4	60 CAP	1121-104084020	CH-CAP, CER0.1UF50V+80%-20%0603	C516,C519,C525
....4	65 CAP	1121-154084020	CH-CAP, CER0.15UF50V +80%/-20%0603	C506,C507,C508,C509
....4	70 CAP	1121-105044020	CH-CAP, CER1UF10V +80%/-20%0603	C511,C514,C517,C518
....4	75 CAP	1121-225042020	CH-CAP, CER 2.2UF 10V +/-10% 0603	C504,C505
....4	80 CAP	1121-475054030	CH-CAP, CER 4.7UF16V+80%/-20%0805	C520,C530
....4	90 CAP	1132-226053060	CAP ELECT, 22UF 16V +/-20% 5X11	C501
....4	95 CAP	1132-476053060	CAP ELECT, 47UF 16V +/-20% 5X11	C540
....4	100 CAP	1132-477053220	CAP ELECT,470UF 16V +/-20% 8X12	C526
....4	110 RES	1221-221062020	CH-RES,220R1/16W+/-5%0603	R514
....4	120 RES	1221-561062020	CH-RES,560R1/16W+/-5%0603	R507,R511
....4	130 RES	1221-102062020	CH-RES,1K1/16W+/-5%0603	R501,R502
....4	140 RES	1221-152062020	CH-RES,1.5K1/16W+/-5%0603	R510,R512
....4	150 RES	1221-682062020	CH-RES,6.8K1/16W+/-5%0603	R503,R504
....4	160 RES	1221-103061020	CH-RES, 10K1/16W+/-1%0603	R506,R509
....4	170 RES	1221-153062020	CH-RES,15K1/16W+/-5%0603	R505,R508
....4	180 DISCRETE	1313-079680000	ZENER DIODE, BZX79-C6V8	ZD501
....4	190 DISCRETE	1422-817250000	CH-TRANSISTOR,BC817-25	Q501
....4	200 SEMICON	1502-002314010	IC ET2314 SOUND SO28	IC501
....4	210 FRP	2721-102020000	FERRITE BEAD SMD 1K+/-25%/100MHZ 06C FB501,FB502	
...3	50 ASSY	8905-070100100	POWER AMPLIFIER PORTION OF AZ1826/12	
....4	10 CAP	1121-152082020	CH-CAP, CER1500PF50V+/-10%0603	C860,C861
....4	20 CAP	1121-104082020	CH-CAP, CER0.1UF50V+/-10%0603	C814,C815,C822,C823,C824
....4	30 CAP	1132-225083060	CAP ELECT, 2.2UF 50V +/-20% 5X11	C800,C801,C808
....4	40 CAP	1132-476053060	CAP ELECT, 47UF 16V +/-20% 5X11	C802,C805,C809
....4	50 CAP	1132-107053060	CAP ELECT, 100UF 16V +/-20% 5X11	C804,C806,C810,C818
....4	55 CAP	1132-227053060	CAP ELECT, 220UF 16V +/-20% 5X11	C813
....4	60 CAP	1132-477053220	CAP ELECT,470UF 16V +/-20% 8X12	C812,C817
....4	65 CAP	1112-108053140	CAP, ELECT, 1000UF16V+/-20%10X16	C820
....4	70 CAP	1138-154082230	CAP, MYLAR 0.15UF 50V+/-10%5X10	C811,C816
....4	80 RES	1221-047062020	CH-RES,4.7R1/16W+/-5%0603	R808,R809
....4	90 RES	1221-470062020	CH-RES,47R1/16W+/-5%0603	R813
....4	100 RES	1221-101062020	CH-RES,100R1/16W+/-5%0603	R812,R821
....4	110 RES	1221-681062020	CH-RES,680R1/16W+/-5%0603	R801,R806
....4	120 RES	1221-102062020	CH-RES,1K1/16W+/-5%0603	R802,R805,R810,R811,R815,R816
....4	130 RES	1221-222062020	CH-RES,2.2K1/16W+/-5%0603	R803,R804
....4	140 RES	1221-332062020	CH-RES,3.3K1/16W+/-5%0603	R807
....4	145 RES	1221-392062020	CH-RES,3.9K1/16W+/-5%0603	R822,R823
....4	150 RES	1221-103061020	CH-RES, 10K1/16W+/-1%0603	R814
....4	160 DISCRETE	1313-079680000	ZENER DIODE, BZX79-C6V8	ZD801
....4	170 DISCRETE	1321-041480020	CH-DIODE RLS4148 LL-34	D814,D815,D816
....4	180 DISCRETE	1422-817400010	CH-TRANSISTOR,BC817-40 SOT-23	Q801,Q802
....4	200 SEMICON	1502-008227000	IC, D8227 (CHMC) AMP	IC802
....4	210 I/O PARTS	3303-040490010	SLIDE SWITCH NON-SHORTING SST-44D0	SW801
....4	220 ELECTO	3505-040242000	HOUSING 4PIN AWG#24 UL1007 W/2.0MM I	CN8TOCN804
....4	230 METAL	6600-070100200	HEAT SINK	
...3	60 ASSY	8905-070100200	DC POWER PORTION OF AZ1826/12	
....4	10 CAP	1121-104084020	CH-CAP, CER0.1UF50V+80%-20%0603	C604,C607,C611,C612,C614,C616
....4	20 CAP	1112-107033040	CAP, ELECT, 100UF6.3V+/-20%DIP 5X5	C613
....4	30 CAP	1112-108043290	CAP,ELECT, 1000UF10V+/-20%8X14	C615
....4	40 CAP	1112-228043160	CAP,ELECT, 2200UF10V+/-20%10X20	C610
....4	50 CAP	1132-476053060	CAP ELECT, 47UF 16V +/-20% 5X11	C605
....4	60 CAP	1132-107053080	CAP ELECT,100UF 16V +/-20% 6.3X5	C603
....4	70 CAP	1132-227053060	CAP ELECT, 220UF 16V +/-20% 5X11	C606
....4	80 RES	1221-471062020	CH-RES,470R1/16W+/-5%0603	R615
....4	90 RES	1221-751062020	CH-RES,750R1/16W+/-5%0603	R610
....4	100 RES	1221-102062020	CH-RES,1K1/16W+/-5%0603	R601,R607,R609,R627
....4	110 RES	1221-332062020	CH-RES,3.3K1/16W+/-5%0603	R606,R613

....4	120 RES	1221-103062020	CH-RES,10K1/16W+/-5%0603	R608,R616,R617,R626
....4	130 RES	1221-223062020	CH-RES,22K1/16W+/-5%0603	R602,R619,R620,R622
....4	140 RES	1221-473062020	CH-RES,47K1/16W+/-5%0603	R614
....4	150 RES	1233-022012000	FUSE RES, 2.2 1/2W +/-5%	R611
....4	160 DISCRETE	1321-041480020	CH-DIODE RLS4148 LL-34	D602,D605,D607,D609
....4	170 DISCRETE	1311-140010020	DIODE 1N4001 .	D601,D606
....4	180 DISCRETE	1313-079390010	DIODE,BZX79-C3V9	ZD101
....4	190 DISCRETE	1313-079680000	ZENER DIODE, BZX79-C6V8	D603
....4	200 FRP	1703-000000090	28UH CORE:T9X5X3 6TURNS 715OHM 1.2A	L601
....4	210 DISCRETE	1412-221660000	TRANSISTOR 2SD2166-R NPN TO-126FP	Q601
....4	220 DISCRETE	1421-008690000	CH-TRANSISTOR PNP BC869 SOT-89	Q604,Q605,Q608
....4	230 DISCRETE	1422-817250000	CH-TRANSISTOR,BC817-25	Q606,Q613
....4	240 DISCRETE	1422-008470010	CH-TRANSISTOR, BC847C SOT-23.	Q603,Q609
....4	250 SEMICON	1512-001117140	IC, AZ1117D-ADJTRE1 TO252 1A	IC603
....4	260 SEMICON	1512-001117100	IC AP1117E33LA REGULATOR SOT223	IC602
....4	270 ELECTO	3505-050182500	HOUSING 5PIN AWG#24 UL1007 W/2.5MM I CN4TOCN701	
..2	20 ASSY	8902-070100100	TUNER/RECTIFIER/SPK CONNECT ASSEMBLY OF AZ1826/12	
...3	10 PWB	3701-182620210	PWB 141x212x1.6MM/2 94V0 AZ1826-02/03/04 (TUNER/RECTIFIER/SPK CONNECT)	
...3	20 ASSY	8902-070100200	TUNER PORTION OF AZ1826/12	
....4	10 CAP	1132-105083060	CAP, ELECT 1UF 50V +/-20% 5X11	C407
....4	20 CAP	1132-225083060	CAP ELECT, 2.2UF 50V +/-20% 5X11	C405
....4	30 CAP	1132-106083060	CAP, ELECT 10UF 50V +/-20% 5X11	C403
....4	40 CAP	1132-226083060	CAP ELECT, 22UF 50V +/-20% 5X11	C476,C477,C478
....4	50 CAP	1132-107053060	CAP ELECT, 100UF 16V +/-20% 5X11	C406,C470
....4	60 CAP	1132-227053060	CAP ELECT, 220UF 16V +/-20% 5X11	C409,C479
....4	70 CAP	1121-150081020	CH-CAP, CER15PF50V+/-5%0603	C426,C439
....4	80 CAP	1121-180081020	CH-CAP, CER18PF50V+/-5%0603 NPO	C421
....4	90 CAP	1121-330081020	CH-CAP, CER33PF50V+/-5%0603	C433
....4	100 CAP	1121-470081020	CH-CAP, CER47PF50V+/-5%0603	C418
....4	110 CAP	1121-820081020	CH-CAP, CER82PF50V+/-5%0603 NPO	C438
....4	120 CAP	1121-101081030	CH-CAP, CER100PF50V+/-5%0805 NPO	C447
....4	130 CAP	1121-221081020	CH-CAP, CER220PF50V+/-5%0603	C412,C413,C444
....4	140 CAP	1121-331081020	CH-CAP, CER330PF50V+/-5%0603	C432
....4	150 CAP	1121-561081020	CH-CAP, CER560PF50V+/-5%0603	C423
....4	160 CAP	1121-102082020	CH-CAP, CER1000PF50V+/-10%0603	C425,C443,C473,C475,C481
....4	170 CAP	1121-222082020	CH-CAP, CER 2200PF50V+/-10%0603	C446
....4	180 CAP	1121-682082020	CH-CAP, CER6800PF50V+/-10%0603	C429,C441
....4	190 CAP	1121-103082020	CH-CAP, CER0.01UF50V+/-10%0603	C435,C436,C467,C468,C469,C474
....4	200 CAP	1121-223082020	CH-CAP, CER 0.022UF 50V +/-10% 0603	C424,C431
....4	210 CAP	1121-333082020	CH-CAP, CER0.033UF50V+/-10%0603	C428
....4	220 CAP	1121-104084020	CH-CAP, CER0.1UF50V+80%-20%0603	C411,C440,C445,C461
....4	230 CAP	1121-104084030	CH-CAP, CER0.1UF50V+80%-20%0805	C449
....4	240 CAP	1121-224084020	CH-CAP, CER0.22UF50V+80%-20%0603	C414,C458
....4	250 CAP	1121-474084020	CH-CAP, CER0.47UF50V+80%-20%0603	C430,C434,C437,C451,C455
....4	260 CAP	1121-200081021	CH-CAP, CER20PF50V+/-5%0603 NPO	C460
....4	270 RES	1221-000062020	CH-RES,0 OHM1/16W+/-5%0603	C465,JR401,JR402,JR404,JR420,R455
....4	280 RES	1221-470062020	CH-RES,47R1/16W+/-5%0603	R421,R450,R451,R452
....4	290 RES	1221-181062020	CH-RES,180R1/16W+/-5%0603	R449
....4	300 RES	1221-221062020	CH-RES,220R1/16W+/-5%0603	R413
....4	310 RES	1221-331062030	CH-RES,330R1/16W+/-5%0805	R433
....4	320 RES	1221-471062020	CH-RES,470R1/16W+/-5%0603	R407,R408,R409,R417
....4	330 RES	1221-102062020	CH-RES,1K1/16W+/-5%0603	R445
....4	340 RES	1221-222062020	CH-RES,2.2K1/16W+/-5%0603	R420,R438,R439,R442,R448
....4	350 RES	1221-472062020	CH-RES,4.7K1/16W+/-5%0603	R444
....4	360 RES	1221-822062020	CH-RES,8.2K1/16W+/-5%0603	R416
....4	370 RES	1221-103062020	CH-RES,10K1/16W+/-5%0603	R440,R441
....4	380 RES	1221-223062020	CH-RES,22K1/16W+/-5%0603	R406,R410,R443
....4	390 RES	1221-333062030	CH-RES,33K1/16W+/-5%0805	R422
....4	400 RES	1221-563062020	CH-RES,56K1/16W+/-5%0603	R419
....4	410 RES	1221-104062020	CH-RES,100K1/16W+/-5%0603	R447
....4	420 RES	1221-104062030	CH-RES,100K1/16W+/-5%0805	R403
....4	430 RES	1221-154062020	CH-RES,150K1/16W+/-5%0603	R429
....4	440 RES	1221-474062020	CH-RES,470K1/16W+/-5%0603	R446
....4	450 RES	1221-105062020	CH-RES,1M1/16W+/-5%0603	R453
....4	460 RES	1232-104056000	VARISTOR RES 100K 3PIN 0.1W +/-30%	VR401

....4	470 CAP	1117-100115260	TRIMMER CAP CTC-10PF N450 WH 220VDC VC402,VC403	
....4	480 CAP	1118-105092250	METALLIZED POLYESTER CAP 1UF 63V +/- C410	
....4	490 FRP	1001-000750220	CRYSTAL, 75KHZ +/-20PPM DT-206 2x6MM X401	
....4	500 FRP	1701-000000010	AM ANT COIL 60TS.	AM-ANT1
....4	510 FRP	1702-015007000	BOBBIN COIL WT 1 1/2T MD7B-01F (242254	L401,L402
....4	520 DISCRETE	1321-003160010	CH-DIODE, HIGHBAS316SOT323	D401,D412
....4	530 DISCRETE	1321-000990030	CH-SW DIODE, BAV99 SOT23	D406,D411
....4	540 DISCRETE	1323-002840000	CH-DIODE, BZX284-C11	D410
....4	550 DISCRETE	1325-001020010	CH-VARIABLE CAP DIODE, HN-1V02H	U402
....4	560 DISCRETE	1325-008040010	CH-VARIABLE CAP DIODE, BB804 (9338794	D407,D408
....4	570 DISCRETE	1421-005500010	CH-TRANSISTOR, BF550 (933450900215)	Q406
....4	580 DISCRETE	1421-008570010	CH-TRANSISTOR, BC857B SOT-23	Q412
....4	590 DISCRETE	1422-008470010	CH-TRANSISTOR, BC847C SOT-23.	Q410,Q411,Q413
....4	600 SEMICON	1501-005757000	IC, TEA5757H/V1 (935174080557) QFP44	U401
....4	610 FRP	2713-000000030	AM FERRITE BAR 55X13X5MM	
....4	620 FRP	2802-302000010	AM OSC BROWN 7MM 10147BN7 (24225494	T405
....4	630 FRP	2803-102000010	AM IFT BLACK 7MM 1M158BK7 (242254944	T403
....4	640 FRP	2803-202000010	AM IFT YELLOW 7MM 1M157YL7 (31401182	T401,T402
....4	650 FRP	2102-000001071	FM CERAMIC FILTER SFELF 10M7HA00-B0	CF401,CF402
....4	660 FRP	2804-102000010	FM IFT BLACK 7MM 1F147BK7 (2422549434	T404
....4	670 ELECTO	3005-000000010	JUMPER WIRE DIA.0.5MM	J401,J402,J403,J404,J405,J406,J407,J408,J411,J412,J413,J414,J415,J416,J418,J421,J422,J423
....4	690 ELECTO	3106-120821000	FFC CONNECTOR 8PIN W/1.25MM WHITE	CN411
....4	700 PLASTIC	5617-070100100	HOLDER-BAR ANT	
....4	710 MISC	8016-000000100	FM ANT CONTACT PIN	FMANTIN
...3	30 ASSY	8909-070100100	RECTIFIER PORTION OF AZ1826/12	
....4	10 CAP	1112-108053140	CAP, ELECT, 1000UF16V+/-20%10X16	C711,C713
....4	20 CAP	1112-228053180	CAP, ELECT, 2200UF16V+/-20%12X25	C725
....4	20 CAP	1131-203082000	CAP, CER 0.02uF 50V+/-10%	C721,C722,C723,C724
....4	30 CAP	1121-104084020	CH-CAP, CER0.1UF50V+80%-20%0603	C726,C727
....4	40 RES	1221-151062020	CH-RES,150R1/16W+/-5%0603	R702
....4	50 RES	1221-681062020	CH-RES,680R1/16W+/-5%0603	R701
....4	60 DISCRETE	1311-140010020	DIODE 1N4001 .	D701,D702,D703,D704
....4	70 SEMICON	1512-001117190	IC AZ1117T-ADJE1 REGULATOR TO-220-3	Q701
....4	80 DISCRETE	2001-160250100	FUSE S506 T1.6AL 250V 5X20MM (TIME-LA	F701
....4	90 ELECTO	3101-250521010	HEADER 5PIN 2.5MM STRAIGHT	CN701
....4	100 ELECTO	3005-000000010	JUMPER WIRE DIA.0.5MM	JW711,JW712,JW804
....4	110 MISC	6304-041500100	FUSE HOLDER CQ-203P 5.4X7.5MM	
....4	120 METAL	6600-070100300	HEAT SINK B1117T	
...3	40 ASSY	8932-070100100	SPK CONNECT PORTION OF AZ1826/12	
....4	10 ELECTO	3101-200421010	HEADER 4PIN 2.0MM STRAIGHT	CN803,CN804
..2	30 ASSY	8907-070100100	DISPLAY PWB ASSEMBLY OF AZ1826/12	
...3	10 PWB	3701-182620510	DISPLAY/KEY/USB PWB 141x179x1.6MM/2	94V0 AZ1826-05/06 V1.5
...3	20 CAP	1121-101081020	CH-CAP, CER100PF50V+/-5%0603	C201
...3	30 CAP	1121-221081020	CH-CAP, CER220PF50V+/-5%0603	C202
...3	40 CAP	1121-102081020	CH-CAP, CER 1000PF50V+/-5%0603	C220,C221
...3	50 CAP	1121-104084020	CH-CAP, CER0.1UF50V+80%-20%0603	C203,C230,C231,C232,C233,C234,C235,C236,C237,C238,C239,C240
...3	60 CAP	1121-474054020	CH-CAP, CER0.47UF16V+80%-20%0603	C216,C225
...3	70 CAP	1132-107053080	CAP ELECT,100UF 16V +/-20% 6.3X5	C204,C214
...3	80 RES	1221-000062020	CH-RES,0 OHM1/16W+/-5%0603	JR201,JR202,JR203,JR204
...3	90 RES	1221-470062020	CH-RES,47R1/16W+/-5%0603	R221,R225
...3	100 RES	1221-101062020	CH-RES,100R1/16W+/-5%0603	R201,R202,R224
...3	110 RES	1221-271062020	CH-RES,270R1/16W+/-5%0603	R207
...3	120 RES	1221-331062020	CH-RES,330R1/16W+/-5%0603	R208,R214,R223
...3	130 RES	1221-431062020	CH-RES,430R1/16W+/-5%0603	R204,R206
...3	140 RES	1221-471062020	CH-RES,470R1/16W+/-5%0603	R209,R215,R220
...3	150 RES	1221-681062020	CH-RES,680R1/16W+/-5%0603	R210,R216
...3	160 RES	1221-102062020	CH-RES,1K1/16W+/-5%0603	R211,R217
...3	170 RES	1221-152062020	CH-RES,1.5K1/16W+/-5%0603	R212,R218
...3	180 RES	1221-472062020	CH-RES,4.7K1/16W+/-5%0603	R203,R205
...3	190 RES	1221-512062020	CH-RES,5.1K 1/16W+/-5%0603	R222
...3	200 SEMICON	1513-008861010	IC, ET8861M SOP32 LCD DRIVER	IC201
...3	210 REMOTE	1801-000000190	IR RECEIVER PIC-2T19ASMB	IR201

...3	220 DISPLAY	2403-000000590	LCD GB2210TR-H#A-A1 38x42x2.8MM HTN. LCD201	
...3	230 FRP	2721-300020000	FERRITE BEAD SMD 30OHM +/-25%/100MH	FB201,FB202
...3	240 ELECTO	3005-000000010	JUMPER WIRE DIA.0.5MM	JVV202,JVV203,JVV204,JVV205,JVV206,J W210,JW211,JW212,JW213,JW214,JW 215 SW202,SW203,SW204,SW205,SW206, SW207,SW208,SW209,SW210,SW211, SW212
...3	250 I/O PARTS	3302-010143020	SWITCH TACT TSA-06430-150 LUP FUNG	CN201TOMAINBOARDCN6
...3	260 ELECTO	3501-080192000	HOUSING 8PIN AWG#28 UL2651 W/2.0MM I	
...3	270 PLASTIC	5603-042100200	BRACKET-SENSOR	
...3	280 PLASTIC	5601-042100100	LCD HOLDER	
...3	290 METAL	6013-226080400	SCREW, ST 2.6X8 A222608000	2-LCDHOLDER,1-BRACKET-SENSOR
...3	300 MISC	6700-042100200	FELT SHEET 3.5x3.5x0.5	LCD+LCDBRACKET
..2	40 ASSY	8931-070100200	USB PWB ASSEMBLY OF AZ1826/12	
...3	20 CAP	1121-104084020	CH-CAP, CER0.1UF50V+80%-20%0603	C901,C902
...3	30 FRP	2721-300020000	FERRITE BEAD SMD 30OHM +/-25%/100MH	FB901,FB902,FB903
...3	40 ELECTO	3101-200521010	HEADER 5PIN 2.0MM STRAIGHT	CN901
...3	50 I/O PARTS	3209-040200000	USB JACK USB-1400A 4P	CN902
...3	60 ELECTO	3601-106000010	CH-MULT.VAR.EZJZ1V120KA 10.6-15.4V 06	ML901,ML902
...3	70 ELECTO	8022-000000600	PULSE GUARD 0603ESDA-TR1	PG901,PG902
0.1	20 ASSY	8900-070100200	ELECTRICAL ENCASING ASSEMBLY OF AZ1826/12	
..2	20 ELECTO	3001-000125100	WIRE CABLE UL1007 AWG#22 L=125MM BL	WATOWB PCBBAT+/SW TO AC SOCKET/SW,ACSOCKET/SWTO PCBBAT+ IN,BAT- TO PCBBAT+/SW
..2	30 ELECTO	3001-000110300	WIRE UL1571 AWG#26 TS L=110MM RED	BAT-TOPCBBAT-
..2	40 ELECTO	3001-000110140	WIRE UL1571 AWG#26 L=110MM BLACK	
..2	50 MECH	4401-100011320	CD MECHANISM DA11B3VF.	
..2	60 I/O PARTS	3309-010100000	CD DOOR SW DLS-02-W-1 1P1T (AUTO LOCK)	
..2	70 ELECTO	3501-020082000	HOUSING, 2P WIRE FLAT CABLE AWG#26 I	CN103TOCDDOORS/W
..2	80 ELECTO	3501-040562000	HOUSING, 4P AWG#26 UL1007 L=560MM W	CN803TOSPK
..2	90 ELECTO	3501-060122000	HOUSING, 6P DISCRETE WIRE AWG#30 UL	CN102TOCDM
..2	100 ELECTO	3502-050222000	HOUSING 5P WIRE FLAT CABLE AWG#28 I	USBCN901TOMAINJ1
..2	140 ELECTO	3002-160100910	FFC CABLE 16PIN P=1.00MM L=100MM WH	CN5TOCDM
..2	145 ELECTO	3002-080150900	FFC CABLE 8P P=1.25MM L=150MM (+/-CO	TUNERCN11TOMAINCN1
..2	150 ELECTO	3001-000200100	FM ANT WIRE UL1007 AWG#24 L=200MM E	FMANT
..2	160 SPKR	2601-030408010	SPEAKER 4", 8OHM, 3W.(BLUE).	
..2	170 ELECTO	3110-000000070	AC POWER SOCKET AC-009	
..2	180 TRFMR	2302-415182610	POWER TRANSFORMER EI-41 AC230V (ST T801	
0.1	30 ASSY	8940-070100300	MECHANICAL SECTION OF AZ1826/79	
..2	10 ASSY	8941-070100500	CABINET FRONT ASS'Y OF AZ1826/79	
...3	10 PLASTIC	5001-070100200	FRONT CABINET FOR /79	
...3	20 PLASTIC	5101-070100100	FRONT PANEL	
...3	30 PLASTIC	5501-070100100	DISPLAY LENS	
...3	40 PLASTIC	5902-070100100	DECORATIVE COVER	
...3	50 PLASTIC	5618-070100100	PLAY BUTTON BRACKET	
...3	60 PLASTIC	5618-070100200	VOL/PRESET BUTTON BRACKET	
...3	70 PLASTIC	5618-070100300	TUNING/STOP BUTTON BRACKET	
...3	80 PLASTIC	5101-070100200	FRONT PANEL FIXING BRACKET FOR /79	
...3	90 PLASTIC	5905-070100100	RING-COSMETIC (L)	
...3	100 PLASTIC	5905-070100200	RING-COSMETIC (R)	
...3	110 PLASTIC	5402-070100100	PLAY BUTTON	
...3	120 PLASTIC	5410-070100100	MODE/PROGRAM BUTTON	
...3	130 PLASTIC	5401-070100100	DBB BUTTON	
...3	140 PLASTIC	5406-070100100	VOL/PRESET BUTTON SET	
...3	150 PLASTIC	5403-070100100	TUNING/STOP BUTTON SET	
...3	160 PLASTIC	5904-042100100	FRONT WALL COVER	
..2	20 ASSY	8941-070100600	CD TRAY PORTION OF AZ1826/79	
...3	10 PLASTIC	5919-070100201	CD TRAY FOR /79 V1 FOR AZ1826	
...3	20 PLASTIC	5201-070100100	CD DOOR	
...3	30 PLASTIC	5627-042100200	HOLDER-FUNCTION KNOB	
...3	40 PLASTIC	5627-042100400	ADAPTOR-FUNCTION KNOB	
...3	50 PLASTIC	5703-030600200	DAMPER GEAR ASSEMBLY	
...3	60 PLASTIC	5302-070100100	KNOB-FUNCTION	
...3	70 PLASTIC	5906-070100100	DUST COVER (DA11)	
..2	30 ASSY	8941-070100700	REAR CABINET PORTION OF AZ1826/79	
...3	10 PLASTIC	5002-070100300	BOTTOM CABINET FOR /79	

...3	20 PLASTIC	5202-070100100	DOOR-BATTERY	
...3	30 PLASTIC	5918-070100100	HANDLE	
...3	40 PLASTIC	5624-042100100	BRACKET-RADIO PCB	
...3	50 PLASTIC	5904-042100300	COVER-AC SOCKET	
...3	60 PLASTIC	5934-070100100	HANDLE-HINGE(L)	
...3	70 PLASTIC	5934-070100200	HANDLE-HINGE(R)	
...2	40 ASSY	8942-070100100	METAL PART OF AZ1826/12	
...3	10 MISC	6401-042100100	FOAM RUBBER 49X5X1MM	
...3	15 MISC	6401-070100100	FOAM RUBBER 11.5x11.5x11.5MM FOR AZ1826	
...3	16 MISC	6401-042500500	FOAM RUBBER 15X15X11MM	
...3	20 METAL	6213-070100100	PLATE-FUNCTION KNOB	
...3	30 MISC	6307-070100100	BRACKET-DAMPER GEAR CONTACT	
...3	40 METAL	6213-070100200	PLATE-ROD ANTENNA CONTACT	
...3	50 METAL	6201-070100100	PLATE-BATTERY CONTACT(+)	
...3	60 METAL	6103-042100100	SPRING-BATTERY CONTACT(-)	
...3	70 METAL	6103-042100200	SPRING-BATTERY CONTACT(+,-)	
...3	80 METAL	6102-042100200	SPRING-CD DOOR EJECT	
...3	90 MISC	6808-042100100	ROD ANTENNA	NC2433
...3	100 METAL	6210-070100100	PC SHEET.	CABINETFRONT
...3	110 MISC	6405-070100100	CD DAMPER PURPLE 18DEGREE(BACK)	
...3	120 MISC	6405-070100200	CD DAMPER GREENE 25DEGREE(FRONT)	
...3	130 MISC	6700-042100300	FELT SHEET 45x5x0.5MM	
...3	135 MISC	6700-042100100	FELT SHEET 5x5x0.5MM	CABINEFRONT
...3	140 MISC	6821-070100100	SPEAKER CLIP	
...3	150 MISC	6501-070100100	GRILLE-SPEAKER (L)	
...3	160 MISC	6502-070100100	GRILLE-SPEAKER (R)	
...3	170 MISC	6503-070100100	SPEAKER GRILLE SMALL (R/L)	
...3	180 METAL	6209-070100100	SHAM SPEAKER CONE (R/L)	
...3	190 PACKING	8036-000000200	CABLE TIE	
...3	200 METAL	6825-070100100	SCREW COVER	
...3	210 MISC	8024-000001400	FIBER WASHER 6x3.2x0.5 W/DOUBLE SIDE KEYPCB	
...2	50 ASSY	8946-070100100	SCREW PART OF AZ1826/12	4-TUNER PWB+BRACKET RADIO, 10-KEYPWB/FRONT PANEL ASSEMBLY, 4-FRONT PANELASSEMBLY+FRONT CNBINET, 1-PLATE-FUNCTIONKNOB+ADAPTOR-FUNCTION KNOB, 2-COVER-ACSOCKET+BOTTOM CABINET, 2-USB PWB+FRONTCABINET, 2-BRACKET-DAMPERGEARCONTACT+CD TRAY 2-BOTTOMCABINET+CDTRAY 1-ROD ANTENNA+BOTTOM CABINET, 2-BRACKETRADIO+BOTTOM CABINET, 2-CD TRAY+BOTTOMCABINET, 1-PLATE-ROD ANTENNACONTACT+BOTTOM, 1-ADAPTOR-FUNCTIONKNOB+CD TRAY, 6-MAIN PWB+CD TRAY,2-RECTIFIER PWB, 2-TRANSFORMER+BOTTOMCABINET, 1-CONNECT+BOTTOM CABINET 8-4-CDTRAY+CDM 6-BOTTOMCABINET+FRONTCABINET 2-SPRING- BATTERYCONTACT+BOTTOMCABINET 2-HANDLEHINGE+BOTTOMCABINET 2-DUSTCOVER(DA11)+CDM
...3	10 METAL	6013-226080400	SCREW, ST 2.6X8 A222608000	
...3	20 METAL	6011-230080100	SCREW,ST 3X8 PAN HEAD PB BLACK	
...3	30 METAL	6013-230100101	SCREW,ST B B 3X10 B	
...3	40 METAL	6012-226100410	SCREW, PTTN M 2.6X10 (DIA.:12.0)	
...3	50 METAL	6013-230200100	SCREW,ST B B 3X20 B A223020002	
...3	60 METAL	6012-220080400	SCREW, ST PW B2X8 Y A592008000	
...3	70 METAL	6013-230280100	SCREW,ST B B 3X28B A223012002	
...3	80 METAL	6031-220060400	SCREW, H P B 2.0X6MM Y (TOYO:B052006(2-DUSTCOVER(DA11))+CDM	
...2	60 ASSY	8943-070100300	PACKING PART OF AZ1826/79	
...3	10 PACKING	7103-030300100	LABEL DON'T TOUCH THE LENS	
...3	20 PACKING	7110-030700100	LABEL "DESIGNED BY PHILIPS"	
...3	30 PACKING	7107-030600100	LABEL (QC)	
...3	40 PACKING	7111-070100300	LABEL TYPE PLATE(AZ1826/79)60x43MM	
...3	50 PACKING	7101-070100300	LABEL CARTON BOX(AZ1826/79)83x103MM	
...3	55 PACKING	7116-070100100	LABEL POS STICK ON SPEAKER(L)(AZ1826)	
...3	60 PACKING	7102-042100100	BLANK LABEL WHITE 101x101MM FOR PALLET	

...3	70 PACKING	7201-041900200	GUARANTEE LEAFLET 10/07/2006 (9965 000 38986)
...3	90 PACKING	7202-070100500	INSTRUCTION BOOK-1LANGUAGE ENG(AZ1826/79)
...3	100 PACKING	7203-070100200	QUICK START GUIDE(AZ1826/79)
...3	110 PACKING	7603-070100300	DISPLAY BOX CMYK PRINTING L457xW283xH200MM (AZ1826/79)
...3	120 PACKING	7905-042100200	POLYBAG 530X480MM FORMAINUNIT
...3	130 PACKING	7905-042100300	POLYBAG FOR 110X270MM W/PE-LD04 FORACCORD
...3	140 PACKING	7906-042100100	POLY BELT L940XW45XTHK0.04 W/PE-LD04
...3	150 PACKING	7502-050700100	POLYBAG FOR I/B 203x305x0.04MM W/PE-LD04.
...3	160 PACKING	7206-030800100	SLIP SHEET 1400X1250MM
...3	170 PACKING	7206-030500200	WRAP FILM
...3	180 PACKING	7206-042500100	FITTING PALLET 46.125"X38.75" (3140 10638732)
...3	190 PACKING	7701-070100100	PAPER PULP (TOP)
...3	200 PACKING	7702-070100100	PAPER PULP (BOTTOM)
...3	210 PACKING	7501-070100100	E.P.E SHEET L180xW200 W/RED MARK PE-LD04
...3	220 PACKING	7802-070100100	CARDBOARD B3B 190x100MM
0.1	40 ASSY	8944-070100300	ACCESSORIES OF AZ1826/79
..2	10 REMOTE	1901-000004200	REMOTE CONTROL FOR AZ1826
..2	20 ELECTO	2904-125007000	AC CORD SAA LFC-2F 0.75MM2 2C L=1.5M LP-15A 7.5A/LS-7 2.5A 250V(AUSTRALI