

Service  
Service  
**Service**



# Service Manual



## TABLE OF CONTENTS

	Page
Technical specification .....	1-2
Safety instruction.....	2-1
ESD protection.....	2-2
Set Block diagram .....	3-1
Set Wiring diagram .....	4-1
Disassembly diagram .....	5-1
Main & Key & Ipod board	
Circuit diagram.....	6-1..6-3
Layout diagram.....	6-4..6-5
Power board	
Circuit diagram.....	7-1..7-2
Layout diagram.....	7-3
Mechanical Exploded view.....	8-1

**CLASS 1  
LASER PRODUCT**

© Copyright 2010 Philips Consumer Electronics B.V. Eindhoven, The Netherlands  
All rights reserved. No part of this publication may be reproduced, stored in a retrieval system or transmitted, in any form or by any means, electronic, mechanical, photocopying, or otherwise without the prior permission of Philips.

Published by LX 1120 Service Audio

Printed in The Netherlands

Subject to modification

3141 785 35153

**Version 1.3**



# PHILIPS

Type /Versions:		DS9000									
Board in used:	Service policy	/93 (CHINA)	/12 (EUROPE)	/12 (APAC)	/10 (EUROPE)	/10 (APAC)	/10 (LATAM)		/37 (LATAM)		
Main BOARD		C/M	C	C/M	C	C/M	C/M		C/M		
key BOARD		C	C	C	C	C/M	C/M		C/M		
Jack BOARD		C	C	C	C	C	C		C		
Ipod BOARD		C	C	C	C	C	C		C		
IR BOARD		C	C	C	C	C	C		C		
AC Socket BOARD		C	C	C	C	C	C		C		
Switch Power BOARD		M	M	M	M	M	M		M		
Type /Versions:		DS9000									
Features	Feature diffrence	/93	/12		/10	/10	/10		/37		
RDS											
VOLTAGE SELECTOR											
ECO STANDBY - DARK											
<p>* TIPS : C -- Component Lever Repair.  M -- Module Lever Repair  √ -- Used</p>											

## 2.0 SAFETY INSTRUCTIONS

**(GB)** WARNING

All ICs and many other semi-conductors are susceptible to electrostatic discharges (ESD). Careless handling during repair can reduce life drastically. When repairing, make sure that you are connected with the same potential as the mass of the set via a wrist wrap with resistance. Keep components and tools also at this potential.

**ESD****(NL)** WAARSCHUWING

Alle IC's en vele andere halfgeleiders zijn gevoelig voor electrostatische ontladingen (ESD). Onzorgvuldig behandelen tijdens reparatie kan de levensduur drastisch doen verminderen. Zorg ervoor dat u tijdens reparatie via een polsband met weerstand verbonden bent met hetzelfde potentiaal als de massa van het apparaat. Houd componenten en hulpmiddelen ook op hetzelfde potentiaal.

**(F)** ATTENTION

Tous les IC et beaucoup d'autres semi-conducteurs sont sensibles aux décharges statiques (ESD). Leur longévité pourrait être considérablement écourtée par le fait qu'aucune précaution n'est prise à leur manipulation. Lors de réparations, s'assurer de bien être relié au même potentiel que la masse de l'appareil et enfiler le bracelet serti d'une résistance de sécurité. Veiller à ce que les composants ainsi que les outils que l'on utilise soient également à ce potentiel.

**(D)** WARNUNG

Alle ICs und viele andere Halbleiter sind empfindlich gegenüber elektrostatischen Entladungen (ESD). Unsorgfältige Behandlung im Reparaturfall kann die Lebensdauer drastisch reduzieren. Veranlassen Sie, dass Sie im Reparaturfall über ein Pulsarmband mit Widerstand verbunden sind mit dem gleichen Potential wie die Masse des Gerätes. Bauteile und Hilfsmittel auch auf dieses gleiche Potential halten.

**(I)** AVVERTIMENTO

Tutti IC e parecchi semi-conduttori sono sensibili alle scariche statiche (ESD). La loro longevità potrebbe essere fortemente ridatta in caso di non osservazione della più grande cauzione alla loro manipolazione. Durante le riparazioni occorre quindi essere collegato allo stesso potenziale che quello della massa dell'apparecchio tramite un braccialetto a resistenza. Assicurarsi che i componenti e anche gli utensili con quali si lavora siano anche a questo potenziale.

**(GB)**

Safety regulations require that the set be restored to its original condition and that parts which are identical with those specified, be used.

"Pour votre sécurité, ces documents doivent être utilisés par des spécialistes agréés, seuls habilités à réparer votre appareil en panne".

**(NL)**

Veiligheidsbepalingen vereisen, dat het apparaat bij reparatie in zijn oorspronkelijke toestand wordt teruggebracht en dat onderdelen, identiek aan de gespecificeerde, worden toegepast.

**(F)**

Les normes de sécurité exigent que l'appareil soit remis à l'état d'origine et que soient utilisées les pièces de rechange identiques à celles spécifiées.

**(D)**

Bei jeder Reparatur sind die geltenden Sicherheitsvorschriften zu beachten. Der Originalzustand des Geräts darf nicht verändert werden; für Reparaturen sind Original-Ersatzteile zu verwenden.

**(I)**

Le norme di sicurezza esigono che l'apparecchio venga rimesso nelle condizioni originali e che siano utilizzati i pezzi di ricambio identici a quelli specificati.

"After servicing and before returning set to customer perform a leakage current measurement test from all exposed metal parts to earth ground to assure no shock hazard exist. The leakage current must not exceed 0.5mA."

**(GB)** Warning !

Invisible laser radiation when open. Avoid direct exposure to beam.

**(S)** Varning !

Osynlig laserstrålning när apparaten är öppnad och spårren är urkopplad. Betrakta ej strålen.

**(SF)** Varoitus !

Avatussa laitteessa ja suojalukituksen ohitettaessa olet alttiina näkymättömälle laserisäteilylle. Älä katso säteeseen!

**DK** Advarsel !

Usynlig laserstråling ved åbning når sikkerhedsafbrydere er ude af funktion. Undgå udsættelse for stråling.

Caution: These servicing instructions are for use by qualified service personnel only.

To reduce the risk of electric shock do not perform any servicing other than that contained in the operating instructions unless you are qualified to do so.

## 2.1 ESD PROTECTION

- レンズには絶対に触れないでください。
- DO NOT TOUCH THE LENS.
- LINSE NICHT BRÜHREN.
- NE PAS TOUCHER LA LENTILLE.

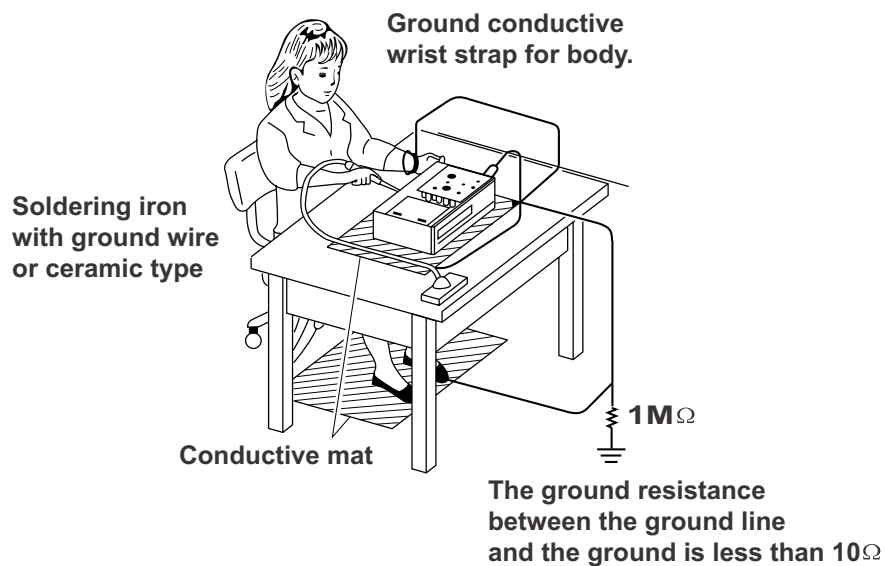
When the power supply is being turned on, you may not remove this laser cautions label. If it removes, radiation of laser may be received.

## PREPARATION OF SERVICING

Pickup Head consists of a laser diode that is very susceptible to external static electrocity.

Although it operates properly after replacement, if it was subject to electrostatic discharge during replacement, its life might be shortened. When replacing, use a conductive mat, soldering iron with ground wire, etc. to protect the laser diode form damage by static electricity.

And also, the LSI and IC are same as above.



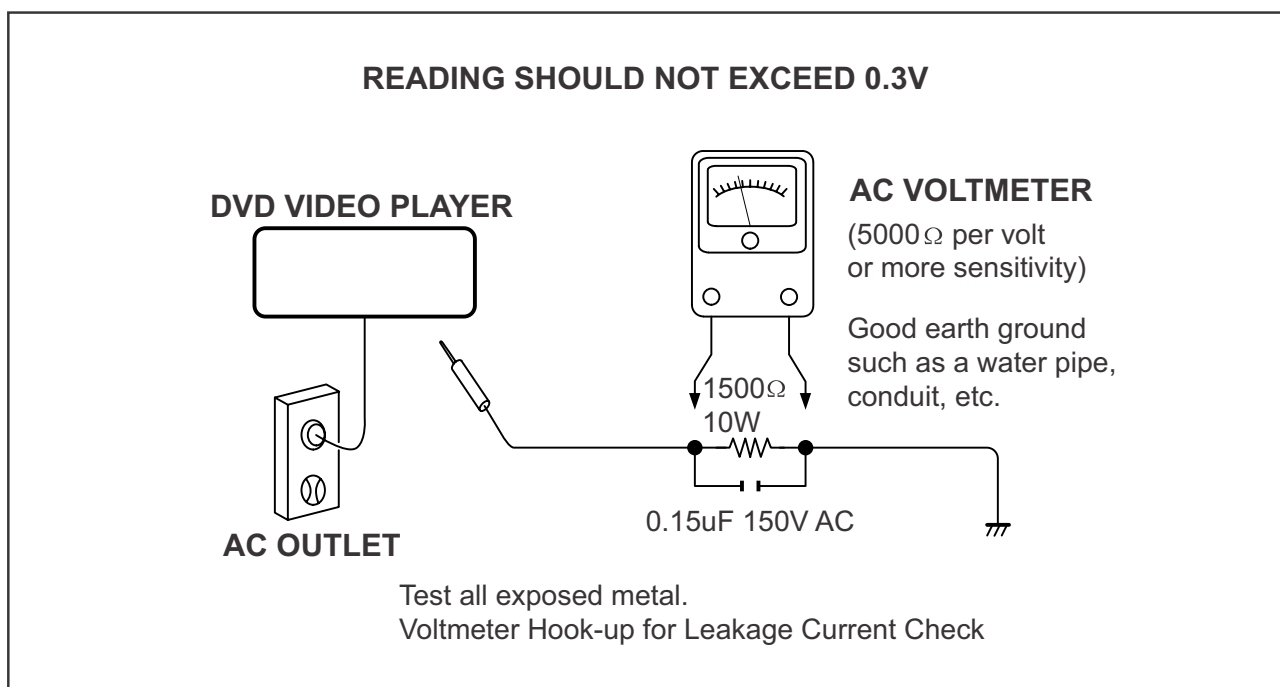
## SAFTY NOTICE

### SAFTY PRECAUTIONS

#### LEAKAGE CURRENT CHECK

Plug the AC line cord directly into a 120V AC outlet (do not use an isolation transformer for this check). Use an AC voltmeter, having  $5000\Omega$  per volt or more sensitivity. Connect a  $1500\Omega$  10W resistor, paralleled by a  $0.15\mu\text{F}$  150V AC capacitor between a known good earth ground (water pipe, conduit, etc.) and all exposed metal parts of cabinet (antennas, handle bracket, metal cabinet screwheads, metal overlays, control shafts, etc.).

Measure the AC voltage across the  $1500\Omega$  resistor. The test must be conducted with the AC switch on and then repeated with the AC switch off. The AC voltage indicated by the meter may not exceed 0.3V. A reading exceeding 0.3V indicates that a dangerous potential exists, the fault must be located and corrected. Repeat the above test with the DVD VIDEO PLAYER power plug reversed. NEVER RETURN A DVD VIDEO PLAYER TO THE CUSTOMER WITHOUT TAKING NECESSARY CORRECTIVE ACTION.



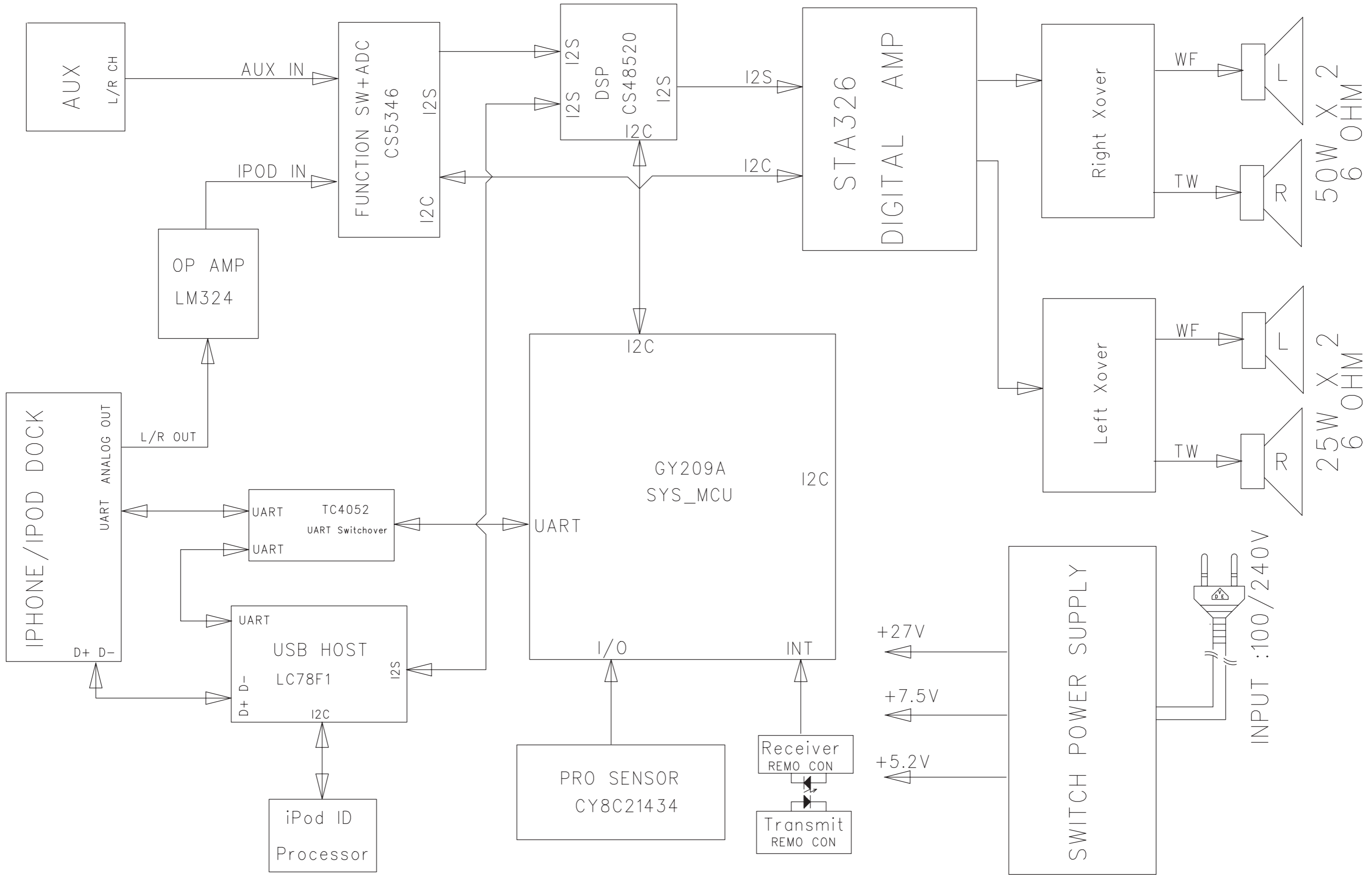
The lightning flash with arrowhead symbol, within an equilateral triangle, is intended to alert the user to the presence of uninsulated "dangerous voltage" within the product's enclosure that may be of sufficient magnitude to constitute a risk of electric shock to persons.



The exclamation point within an equilateral triangle is intended to alert the user to the presence of important operating and maintenance (servicing) instructions in the literature accompanying the appliance.

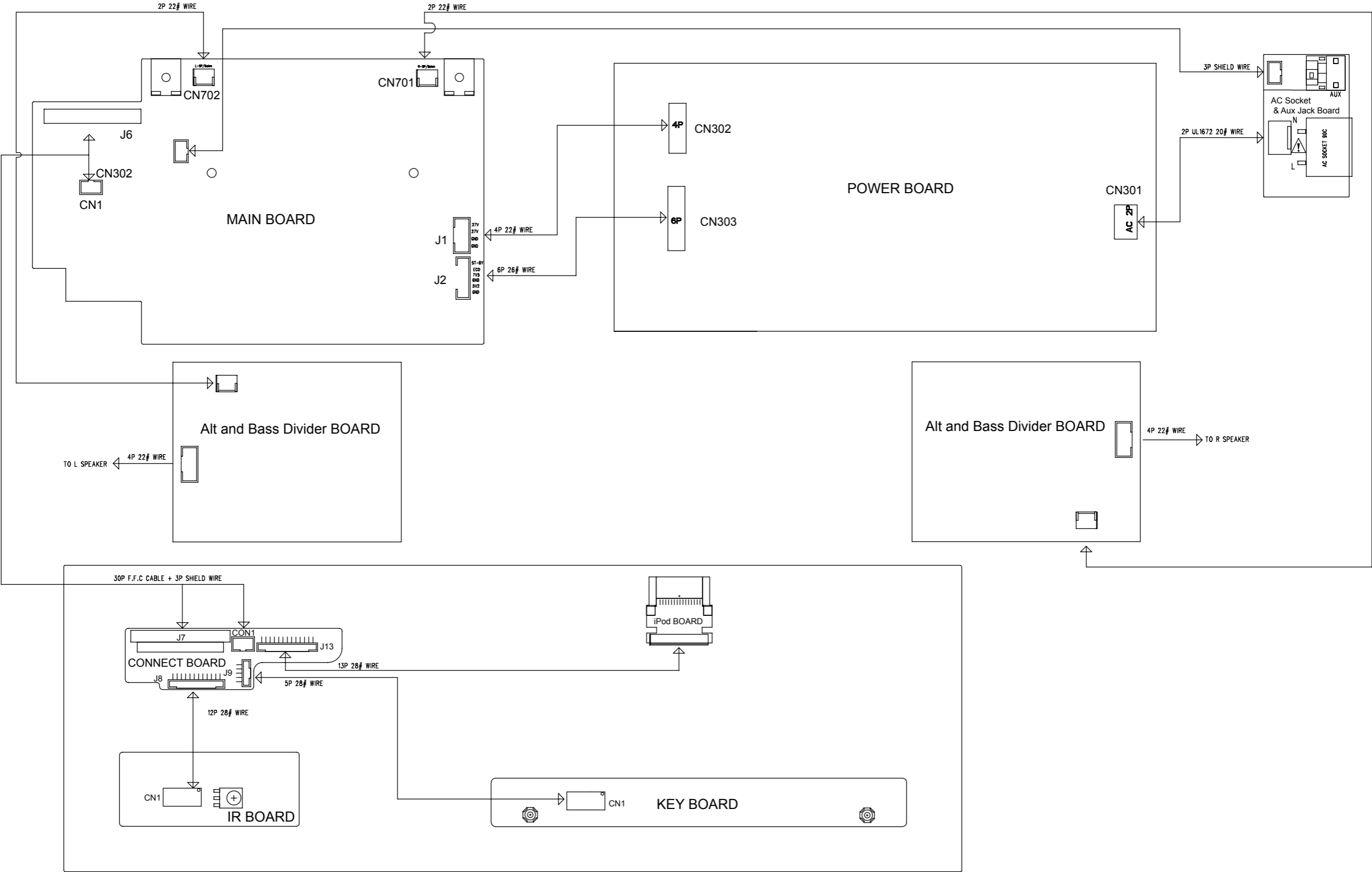
BLOCK DIAGRAM

3-1



3-1

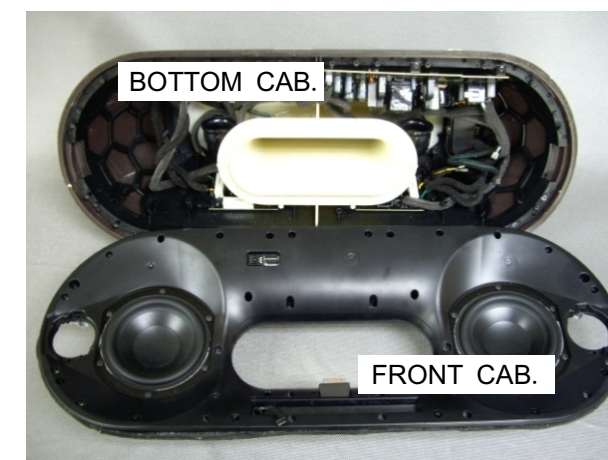
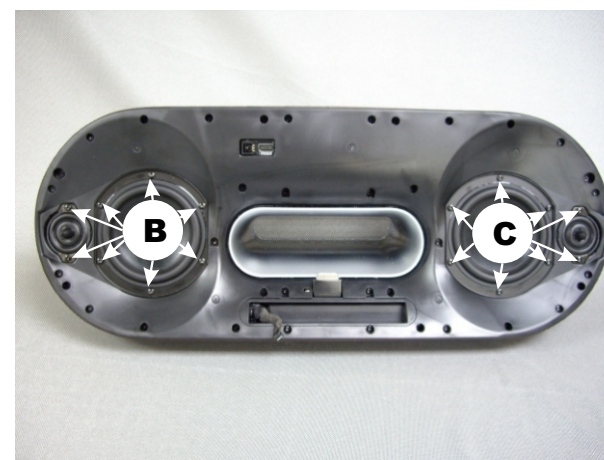
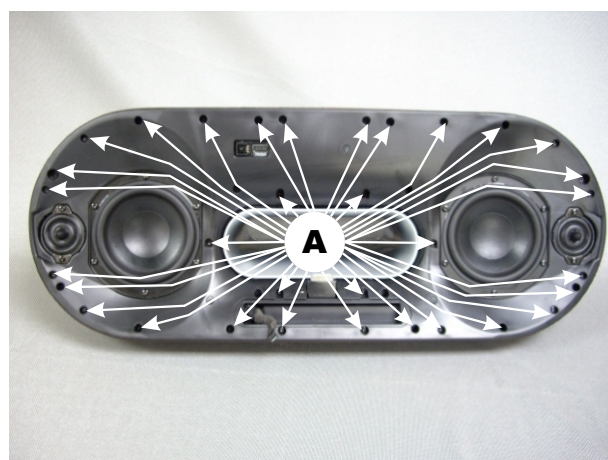
WIRING DIAGRAM



## DISASSEMBLY DIAGRAM

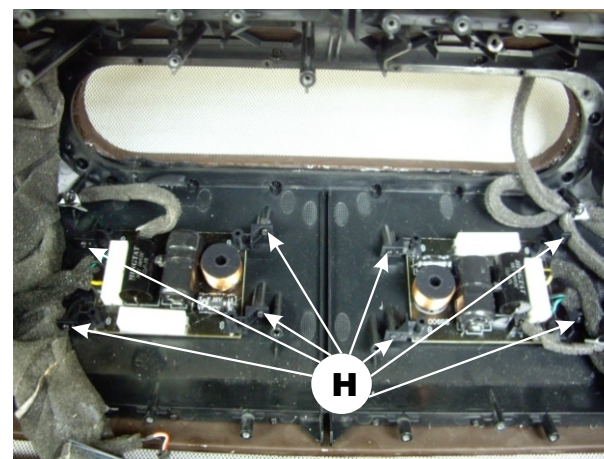
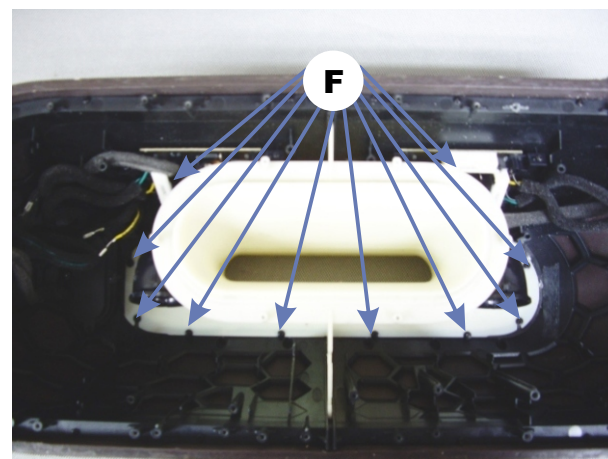
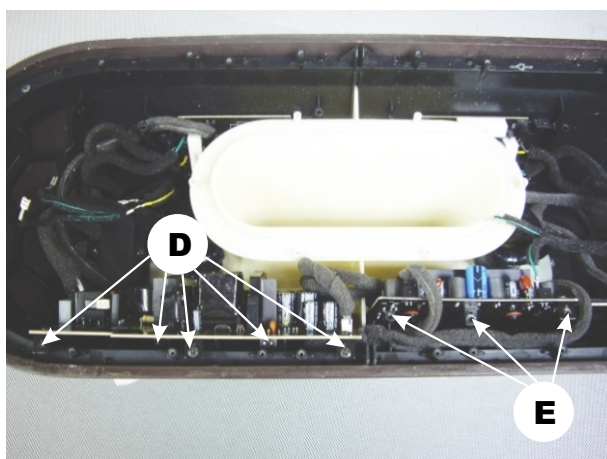
### Dismantling of the Bottom Cabinet

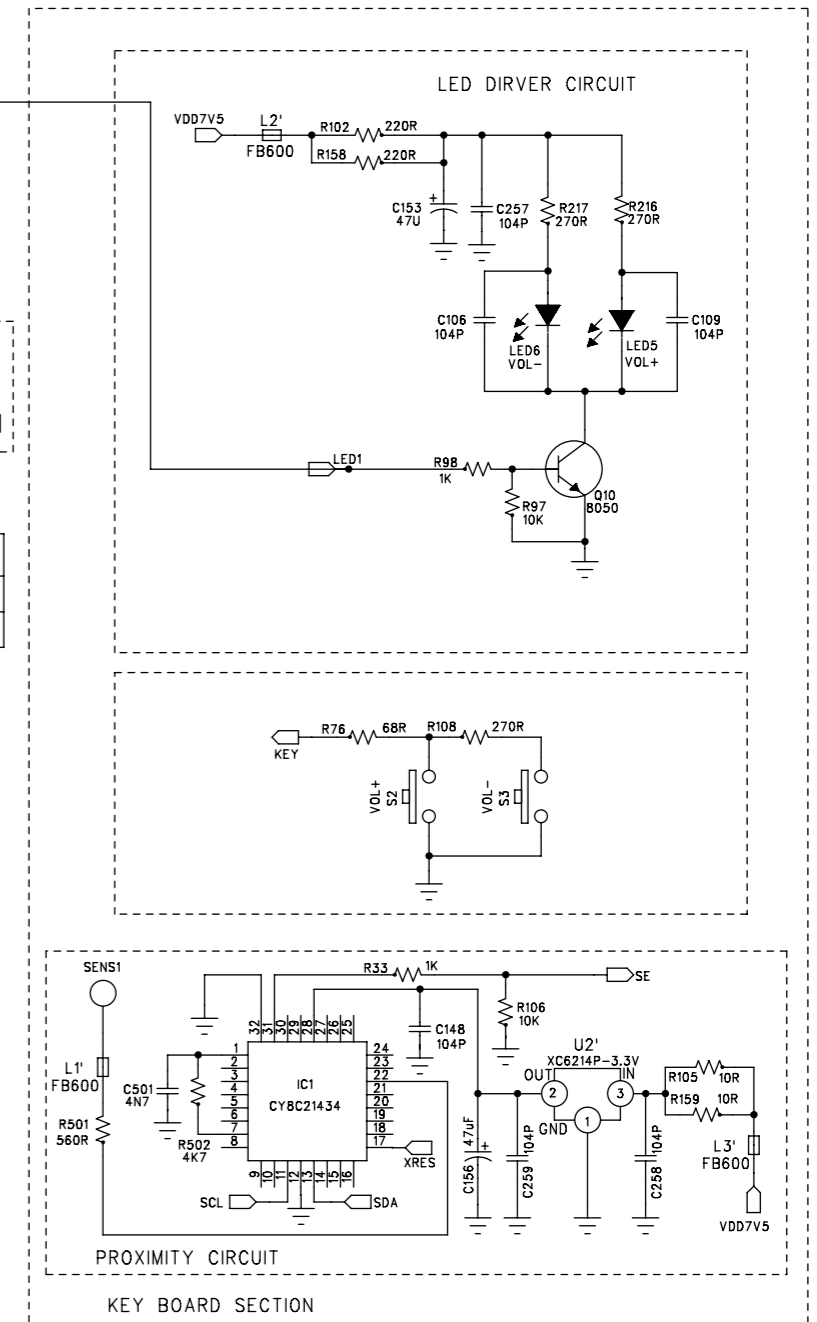
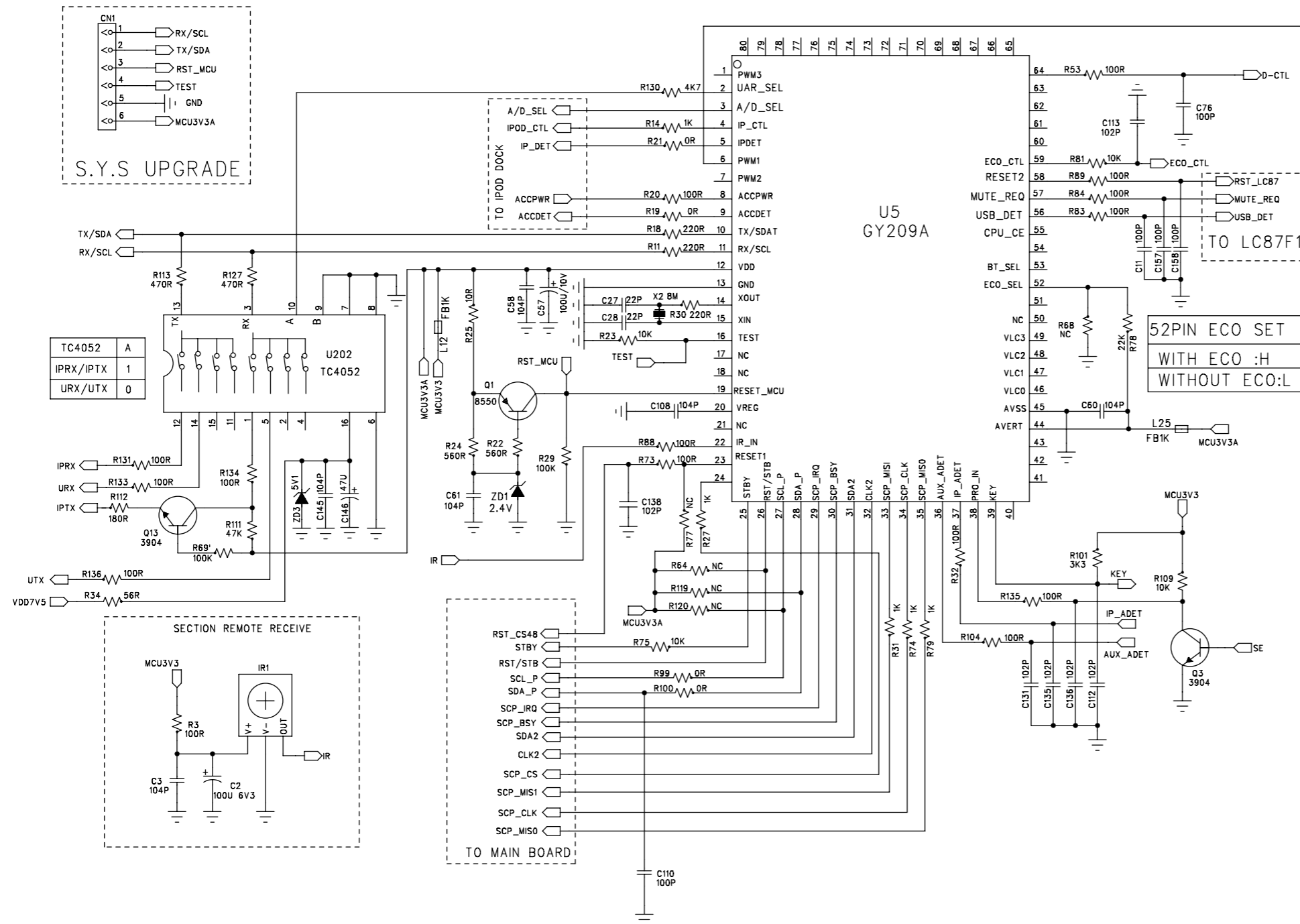
- 1) Remove the speaker grill as indicated.
- 2) Remove 33 screws A as indicated to loosen the Front Cabinet.
- 3) Remove 16 screws B and C as indicated to loosen the Speaker.



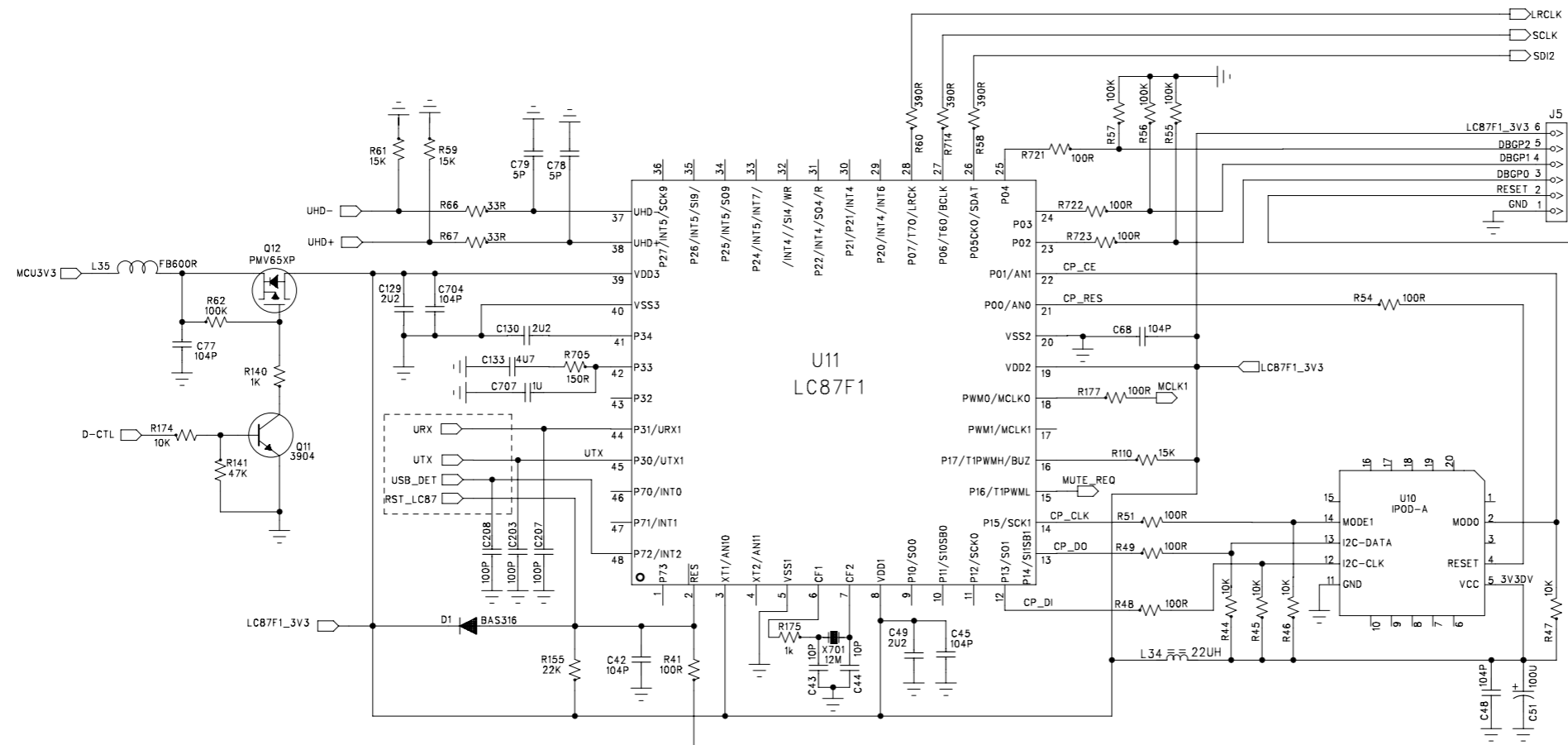
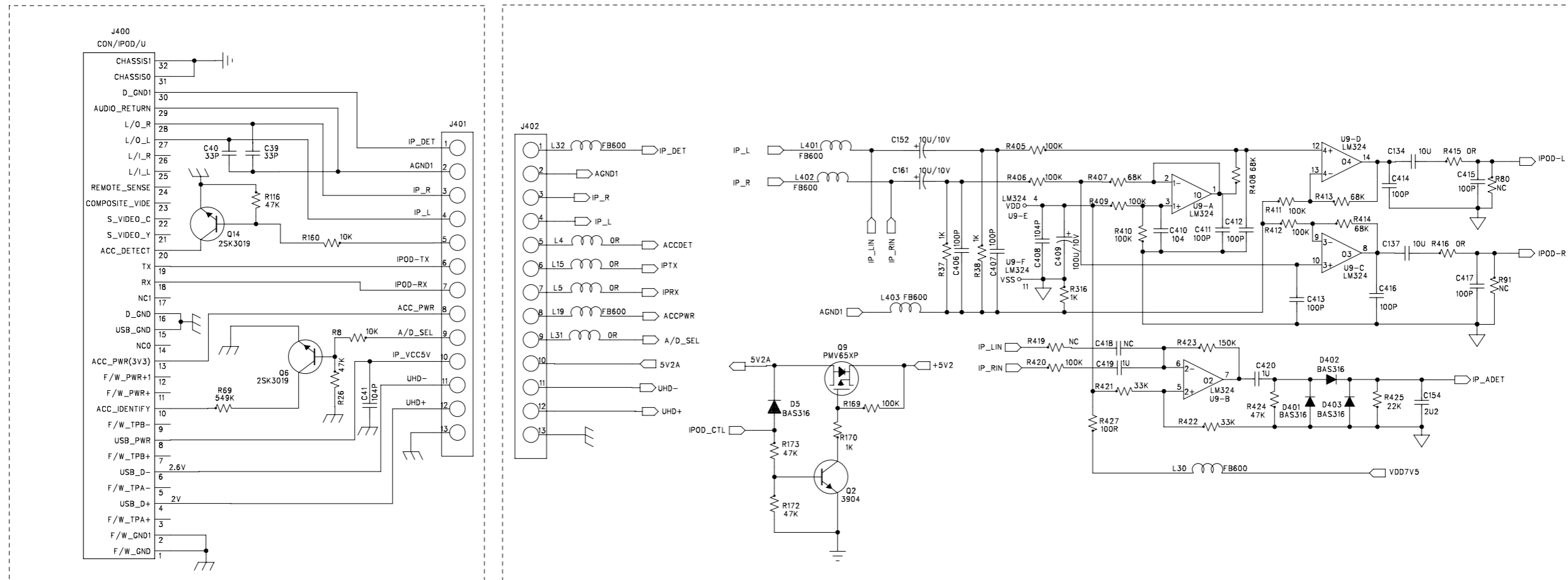
### Dismantling of the PCB Board.

- 1) Remove 5 screws D as indicated to loosen the Power Board.
- 2) Remove 3 screws E as indicated to loosen the Main Board.
- 3) Remove 10 screws F as indicated to loosen the Ring.
- 4) Remove 8 screws H as indicated to loosen the Alt and Bass Divider Board.

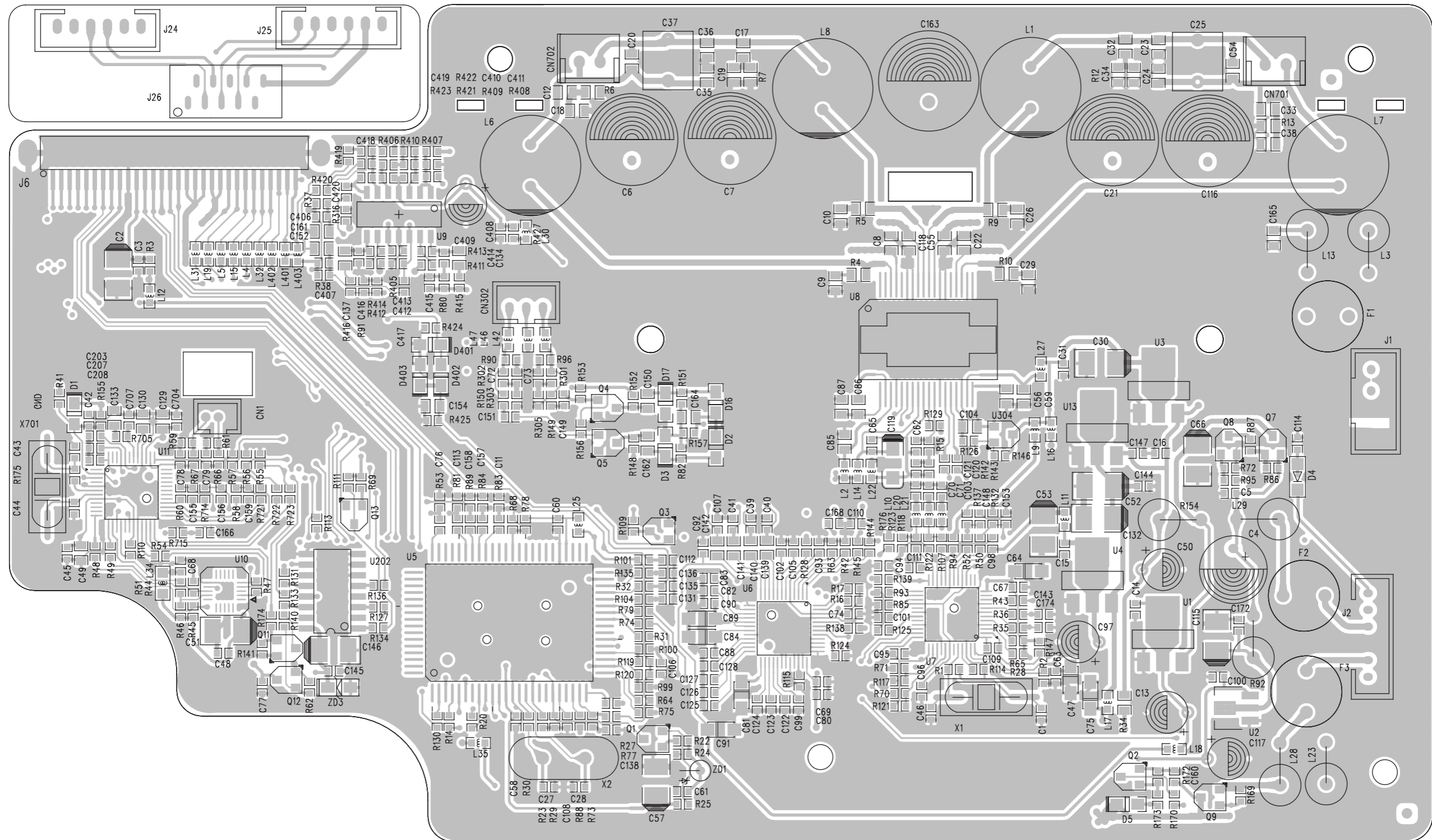


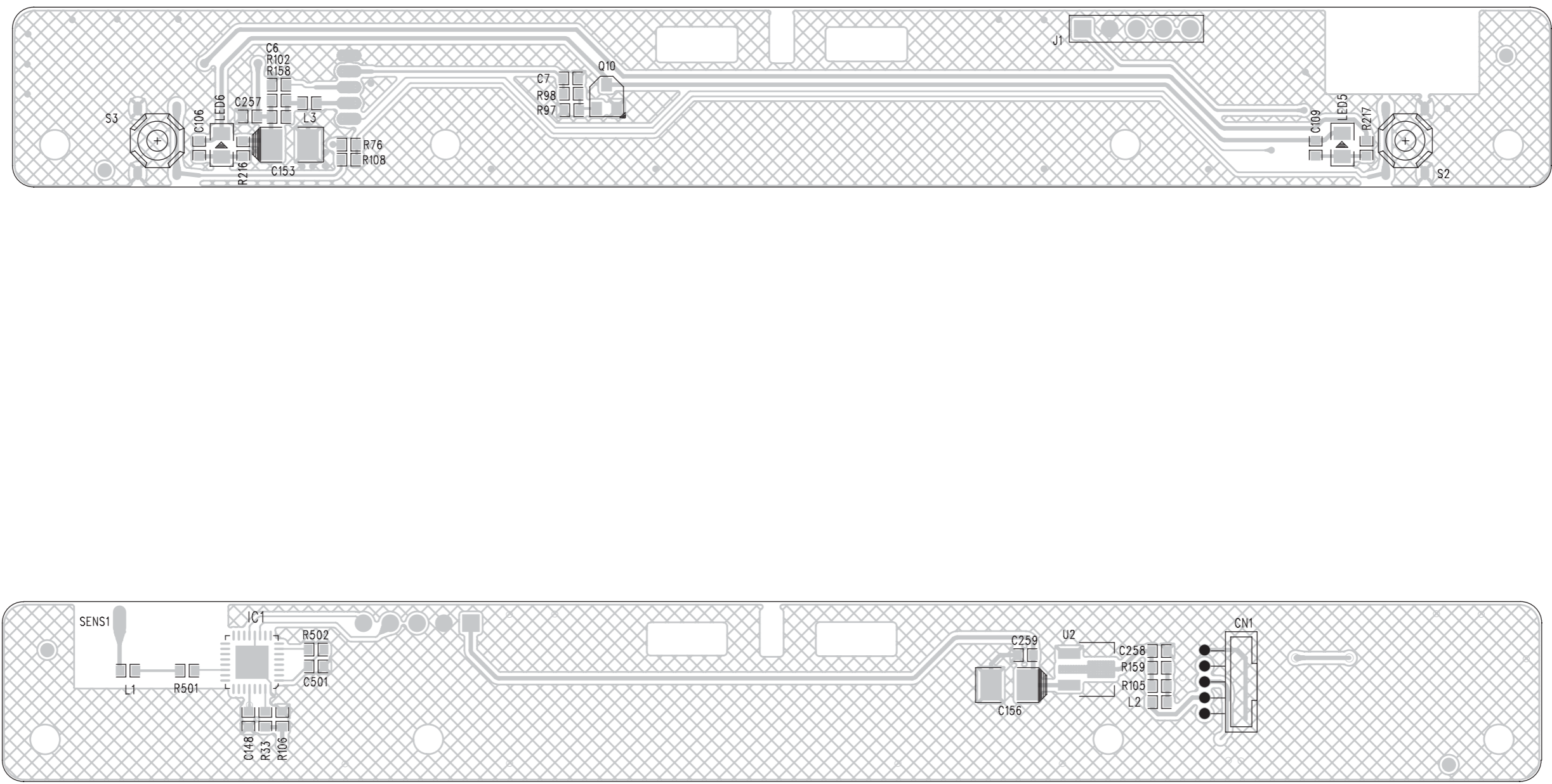






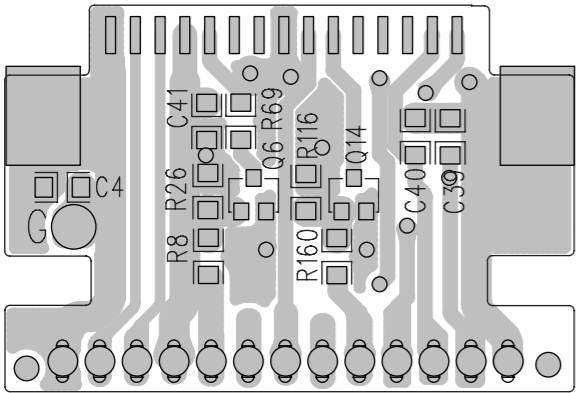
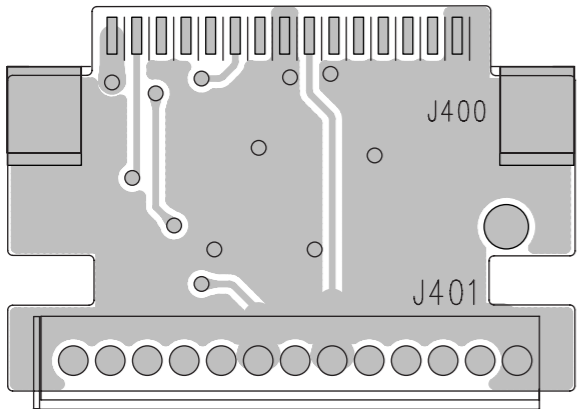
## LAYOUT DIAGRAM-MAIN BOARD



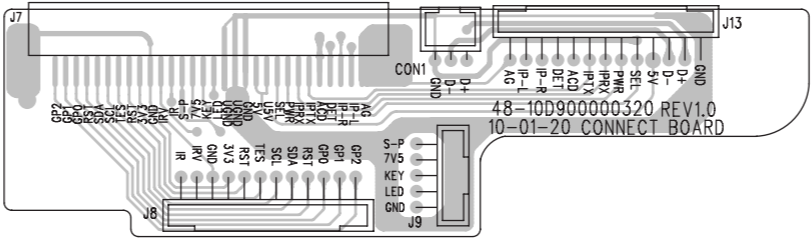


LAYOUT DIAGRAM-iPod BOARD/AC SOCKET&AUX JACK BOARD/CONNECT BOARD/IR BOARD

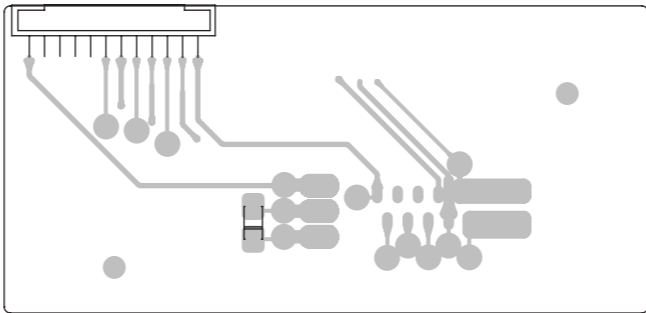
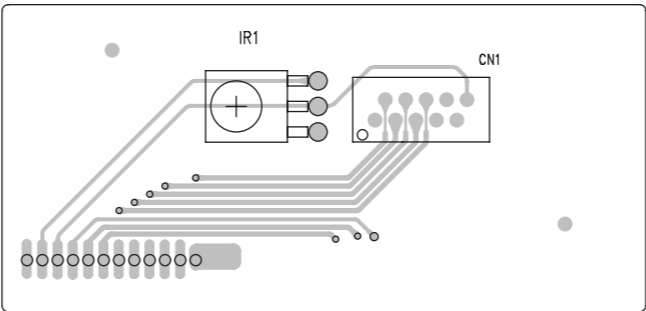
iPod BOARD



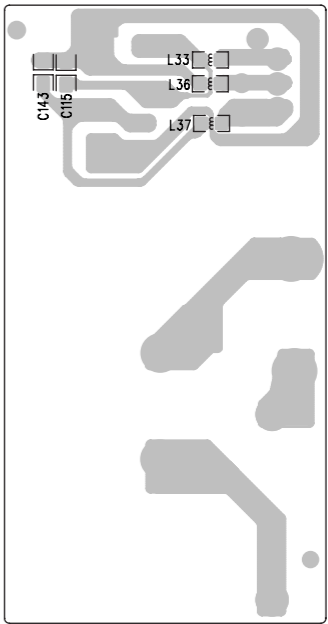
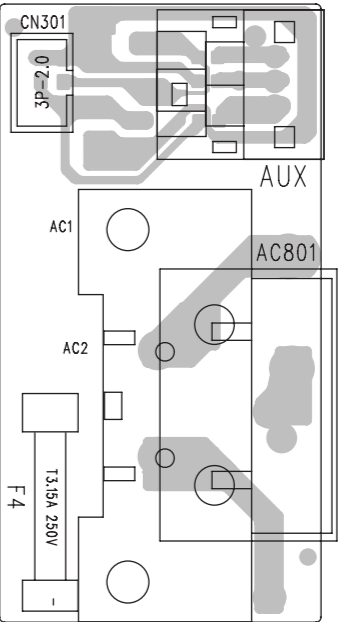
CONNECT BOARD



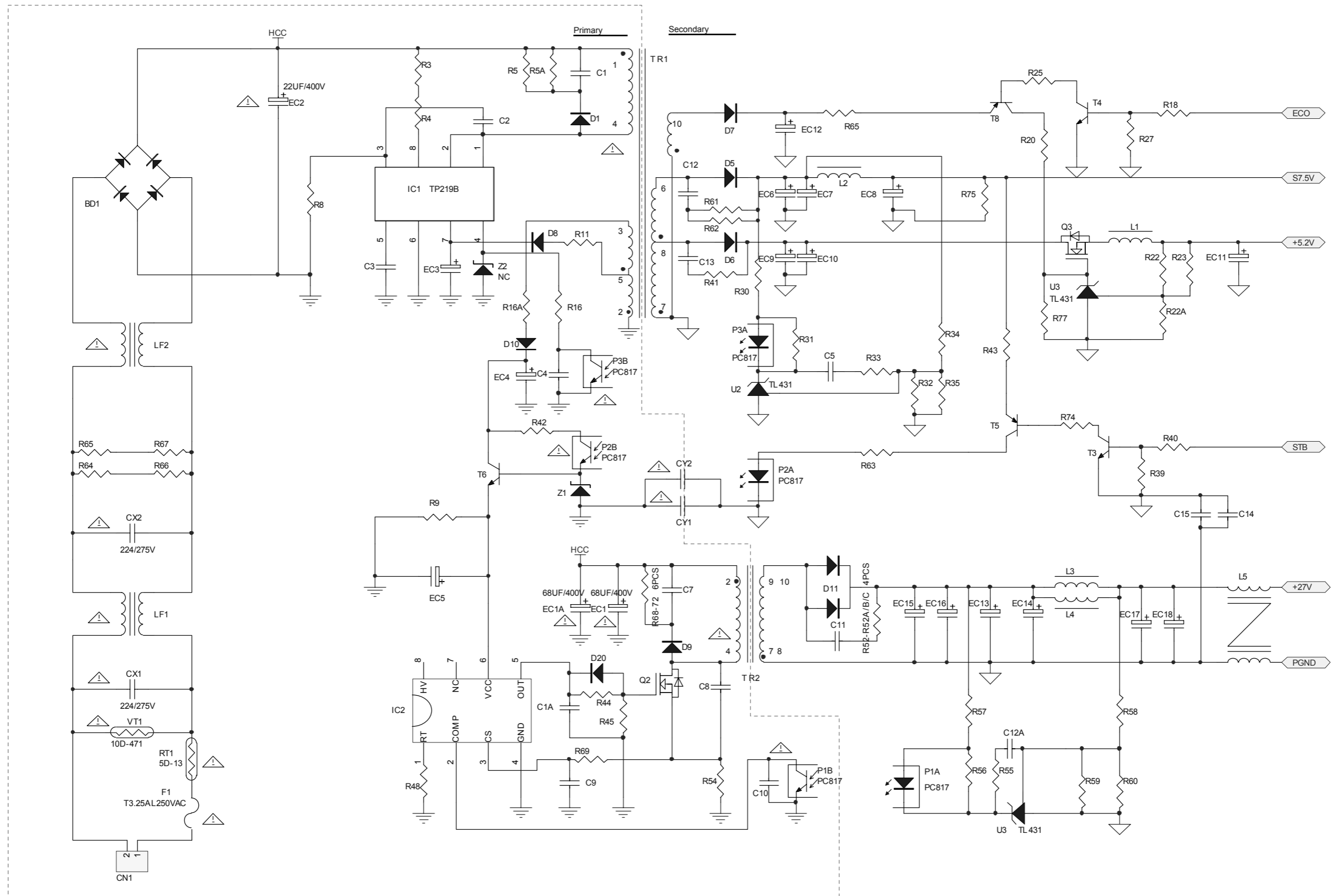
IR BOARD



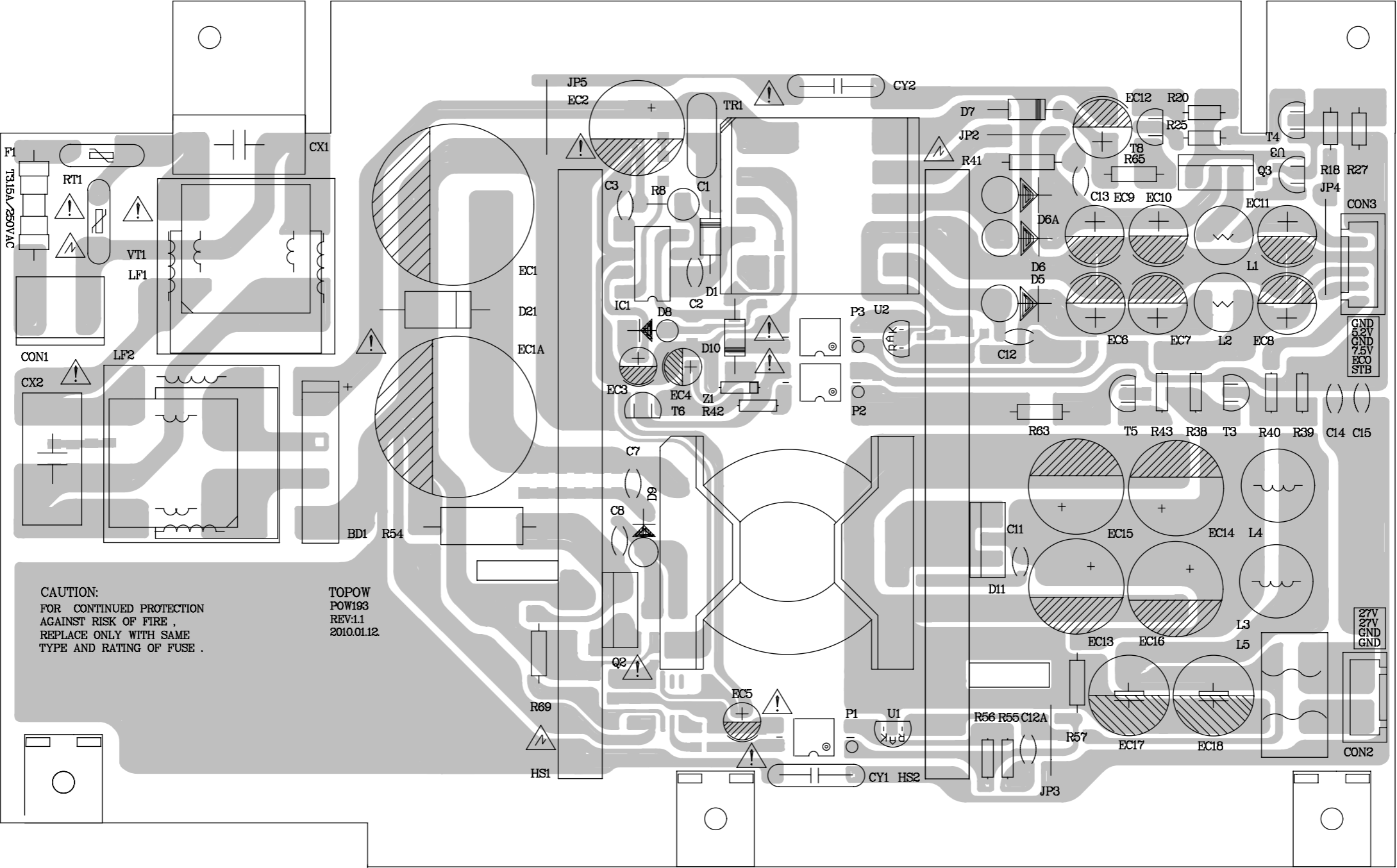
AC SOCKET&AUX JACK BOARD



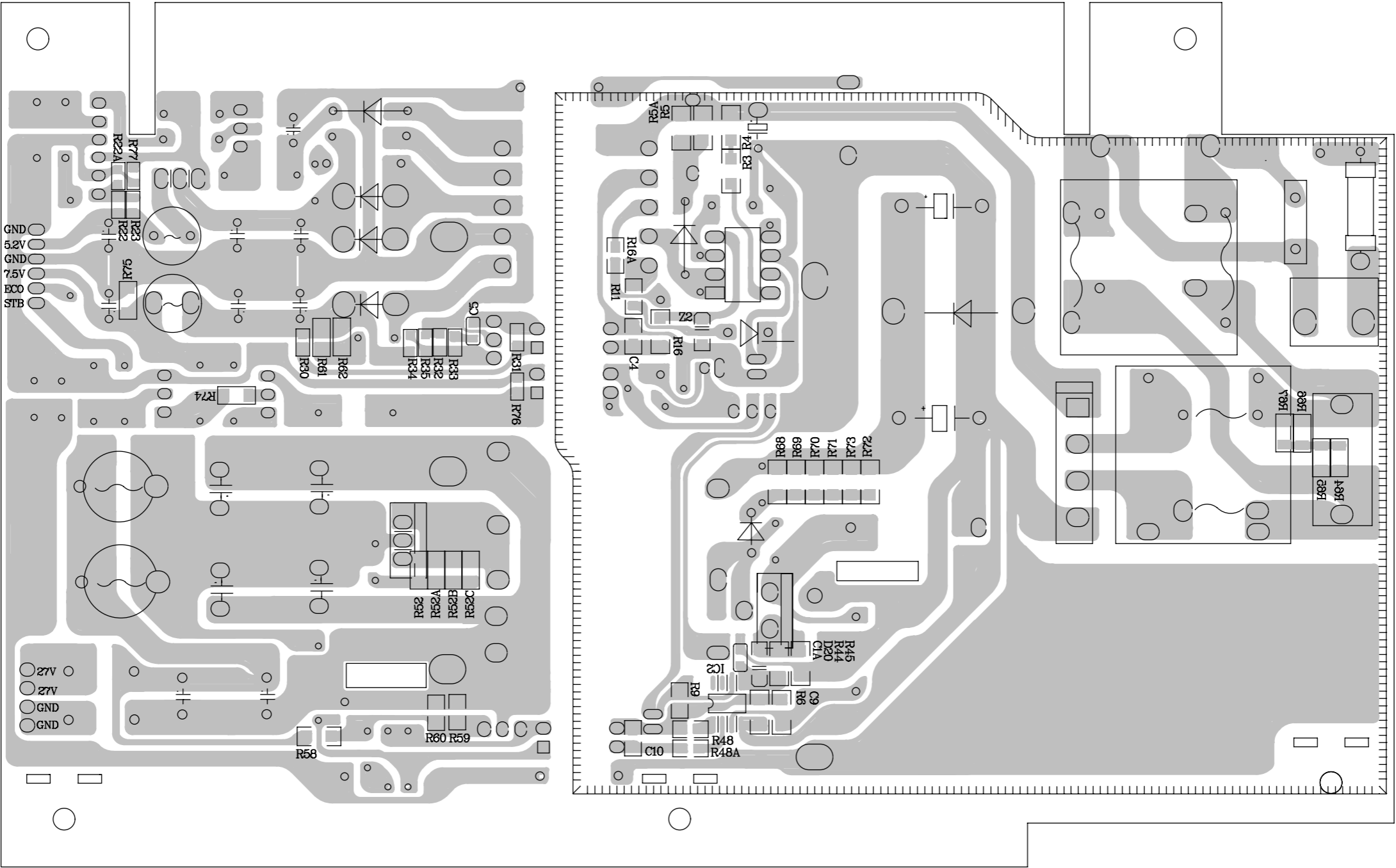
## CIRCUIT DIAGRAM-POWER BOARD



LAYOUT DIAGRAM-POWER BOARD  
TOP SIDE



LAYOUT DIAGRAM-POWER BOARD  
BOTTOM SIDE



EXPLODED VIEW

