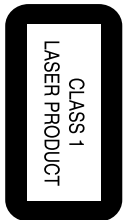




DVD724/781

Service
Service
Service

Service Manual



1	Technical specifications	1
2	Warnings	1
3	Service hints	2
4	Amendment	2
5	Dismantling instruction and exploded view	3
6	Block- and wiring diagram	5
7	Electrical diagrams and print-layouts	7
	Power board	7
	Mpeg board	9
	Front board	15
8	Spare parts list DVD736K/781	17
	Appendix	
	DVD724/781 IFU	



PHILIPS

1. Technical Specifications

DVD724/781

Specifications

DVD-Video player

Technical specifications DVD 724/781

Playback system

- DVD-Video
- Video CD (VCD)
- SVCD
- Picture CD
- MP3-CD¹
- CD (CD-R and CD-RW)¹

Optical read-out system

- Laser type Semiconductor AlGaAs
- Numerical Aperture 0,60 (DVD)
0,45 (VCD/SVCD/CD)
- Wavelength 650 nm (DVD)
780 nm (VCD/SVCD/CD)

DVD disc format

- Medium Optical disc
- Diameter 12 cm (8 cm)
- Playing time One layer 2,15 h²
Dual layer 4 h²
(12cm)
- Two side, 4,30 h²
single layer
- Two side, 8 h²
dual layer

One layer	2,15 h ²
Dual layer	4 h ²
Two side, single layer	4,30 h ²
Two side, dual layer	8 h ²

TV standard

- PAL NTSC
- Number of lines 50 Hz 625
625 525
- Playback Multi standard (PAL/NTSC)

Video format

- Digital compression MPEG 2 for DVD, SVCD
MPEG 1 for VCD

DVD	50Hz	60Hz
Horiz. resolution	720 pixels	720 pixels
Vertical resolution	576 lines	480 lines
VCD	50Hz	60Hz
Horiz. resolution	352 pixels	352 pixels
Vertical resolution	288 lines	240 lines

Video performance

- Video output 1 Vpp into 75 ohm
- S-Video output Y: 1Vpp into 75 Ohm
C: 0.3Vpp into 75 Ohm
- Component Video output Y 1Vpp into 75 Ohm
Cr 0.7Vpp into 75 Ohm
Cb 0.7Vpp into 75 Ohm

Audio format

Digital	• Digital	• Compressed Digital
• MPEG/Dolby Digital/DTS	• Digital	• 16, 20, 24 bits
• PCM	• Digital	• fs, 44.1, 48, 96 kHz
• MP3 (ISO 9660)	• Digital	• 24, 32, 56, 64, 96, 128, 256 kbps & variable bit rate
• fs, 16, 22.05, 24, 32, 44.1, 48 kHz	• Digital	• fs, 16, 22.05, 24, 32, 44.1, 48 kHz

- Analog sound stereo
- Dolby surround compatible downmix from Dolby Digital multi-channel sound
- 3D sound for virtual 5.1 channel sound on 2 speakers
- Dolby Digital and DTS surround sound reproducing from 5.1 channels

2. Warnings

ⓖⓑ WARNING

All ICs and many other semiconductors are susceptible to electrostatic discharges (ESD). Careless handling during repair can reduce life drastically.

When repairing, make sure that you are connected with the same potential as the mass of the set via a wristband with resistance. Keep components and tools at this potential.

ESD



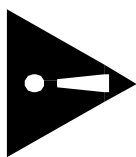
ⓓ WARNING

Tous les IC et beaucoup d'autres semi-conducteurs sont sensibles aux décharges statiques (ESD). Leur longévité pourrait être considérablement écourtée par le fait qu'aucune précaution n'est prise à leur manipulation.

Lors de réparations, s'assurer de bien être relié au même potentiel que la masse de l'appareil et enlever le bracelet anti-décharge statique.

Veiller à ce que les composants ainsi que les outils que l'on utilise soient également à ce potentiel.

SAFETY



Safety regulations require that the set be restored to its original condition and that parts which are identical with those specified be used.

Safety components are marked by the symbol ▲

Les normes de sécurité exigent que l'appareil soit remis à l'état d'origine et que soient utilisées les pièces de rechange identiques à celles spécifiées.

Les composants de sécurité sont marqués ▲

ⓓ

Bei jeder Reparatur sind die geltenden Sicherheitsvorschriften zu beachten. Der Originalzustand des Gerätes darf nicht verändert werden. Für Reparaturen sind Originalersatzteile zu verwenden.

Sicherheitsbauteile sind durch das Symbol ▲ markiert.

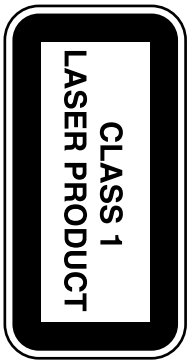
ⓖⓑ

After servicing and before returning the set to customer, perform a leakage current measurement test from all exposed metal parts to earth ground, to assure no shock hazard exists. The leakage current must not exceed 0.5mA.

ⓖⓑ DANGER: Invisible laser radiation when open. AVOID DIRECT EXPOSURE TO BEAM.

Ⓢ Warning !

Osynnig laserstråling når apparaten är öppnad och spårar är utskopplad. Beträkta ej strålen.



ⓕⓓ Varoitus !

Avatussa laitteessa ja suojakittujen oltiittaessa olet alttiina näkymättömälle laseristäville. Älä katso silmeeseen !

Warning for powersupply on primary side

The primary side of the powersupply including the heatsink carries live mains voltage when the player is connected to the mains even when the player is switched off !

This primary area is not shielded so it is possible to touch copper tracks and/or components when servicing the player. Service personnel have to take precautions to prevent touching this area or components in this area.

The primary side of the powersupply has been indicated with a stripe-marked printed on the printed wiring board.

ⓓⓌ WAARSCHUWING

Alle IC's en vele andere halfgeleiders zijn gevoelig voor electrostatische ontladingen (ESD).

Onzorgvuldig behandelen tijdens reparatie kan de levensduur drastisch doen verminderen. Zorg ervoor dat u tijdens reparatie via een polsband met weerstand verbonden bent met hetzelfde potentiaal als de massa van het apparaat.

Houd componenten en hulpindelen ook op ditzelfde potentiaal.

ⓓ AVVERTIMENTO

Tutti IC e parecchi semi-conduttori sono sensibili alle scariche statiche (ESD).

La loro longevità potrebbe essere fortemente ridotta in caso di non osservazione della più grande cautela alla loro manipolazione. Durante le riparazioni occorre quindi essere collegati allo stesso potenziale che quello della massa delapparecchio tramite un braccialeito a resistenza.

Assicurarsi che i componenti e anche gli utensili con quali si lavora siano anche a questo potenziale.

ⓓⓌ

Veiligheidsopdringen vereisen, dat het apparaat in zijn oorspronkelijke toestand wordt teruggebracht en dat onderdelen, identiek aan de gespecificeerde, worden toegepast.

De Veiligheidsopdringen zijn aangeduid met het symbool ▲

ⓓ

Le norme di sicurezza esigono che l'apparecchio venga messo nelle condizioni originali e che siano utilizzati i pezzi di ricambio identici a quelli specifici.

Componenti di sicurezza sono marcati con ▲

ⓕ

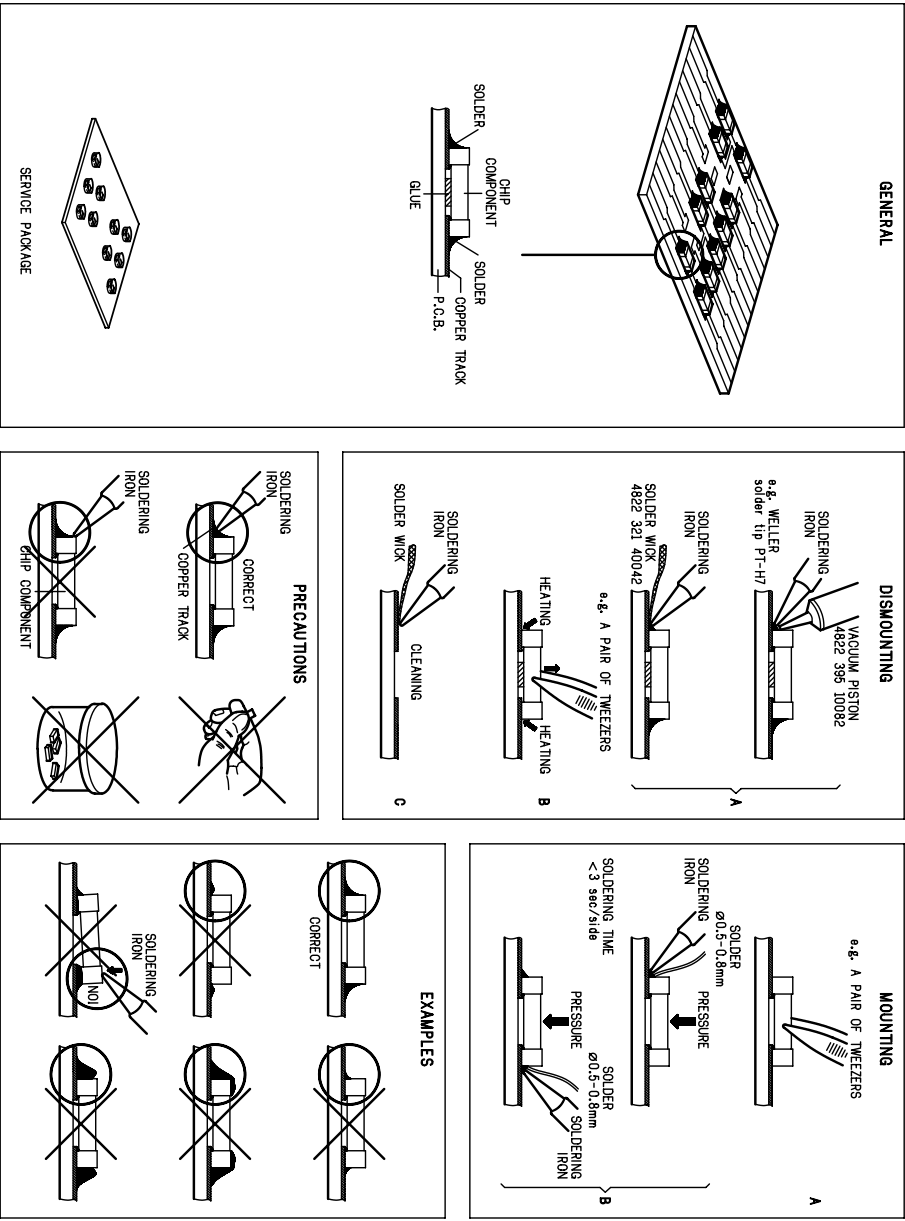
"Pour votre sécurité, ces documents doivent être utilisés par des spécialistes agréés, seuls habilités à réparer votre appareil en panne".

Advarsel !

Usynlig laserstråling ved åbning på sikkerhedsafbrydere er ude af funktion. Undgå udsættelse for stråling.

3. Service hints

HANDLING CHIP COMPONENTS



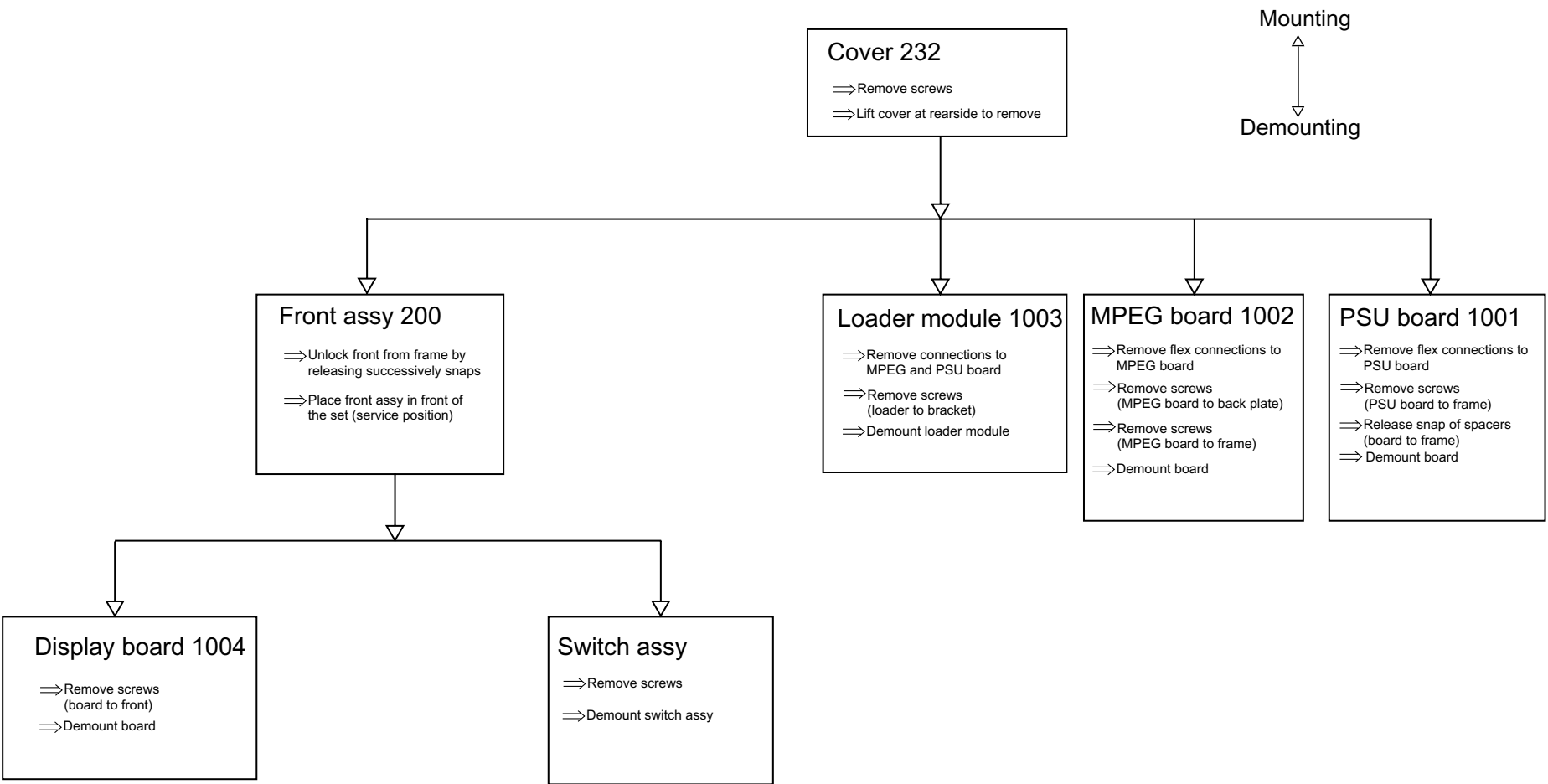
SERVICE TOOLS

Test discs	
Audio signals disc	4822 397 30184
Torx screwdrivers	
Set (straight, T2 to T20)	4822 395 50145
Set (square, T10, T15, T20)	4822 395 50132

4. Revision information

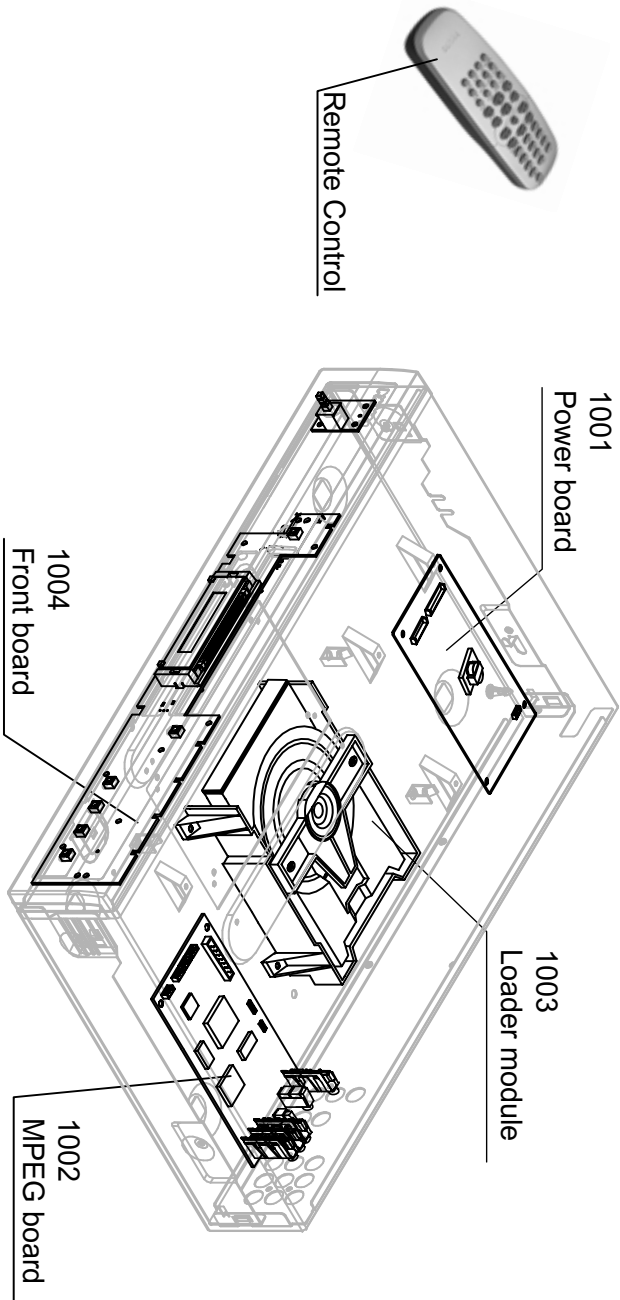
Service manual version:	1.0
Issue Date	: 20 , 6 , 2002
Revision information	: N/A

5. Dismantling instructions and exploded view



5. Dismantling instructions and exploded view

PCB LOCATION DVD724/781

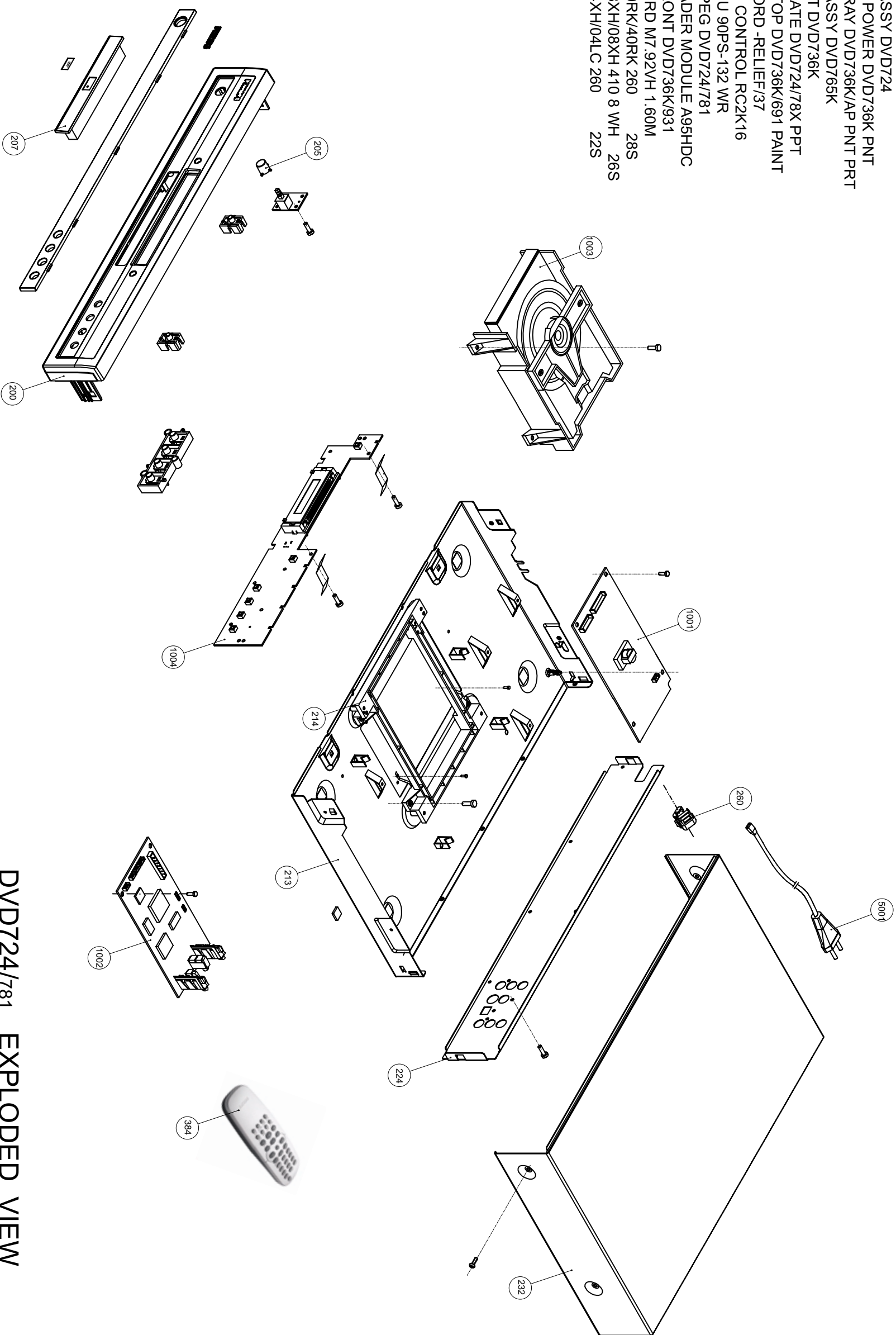


PARTS 12NC LIST

	DVD724/781
1001 PSU board	3141 018 02930
1002 MPEG board	3141 018 03190
1003 Loader module	3141 018 03120
1004 Front board	3141 018 02650
Remote control	3141 017 90220

Dismantling instructions and exploded view

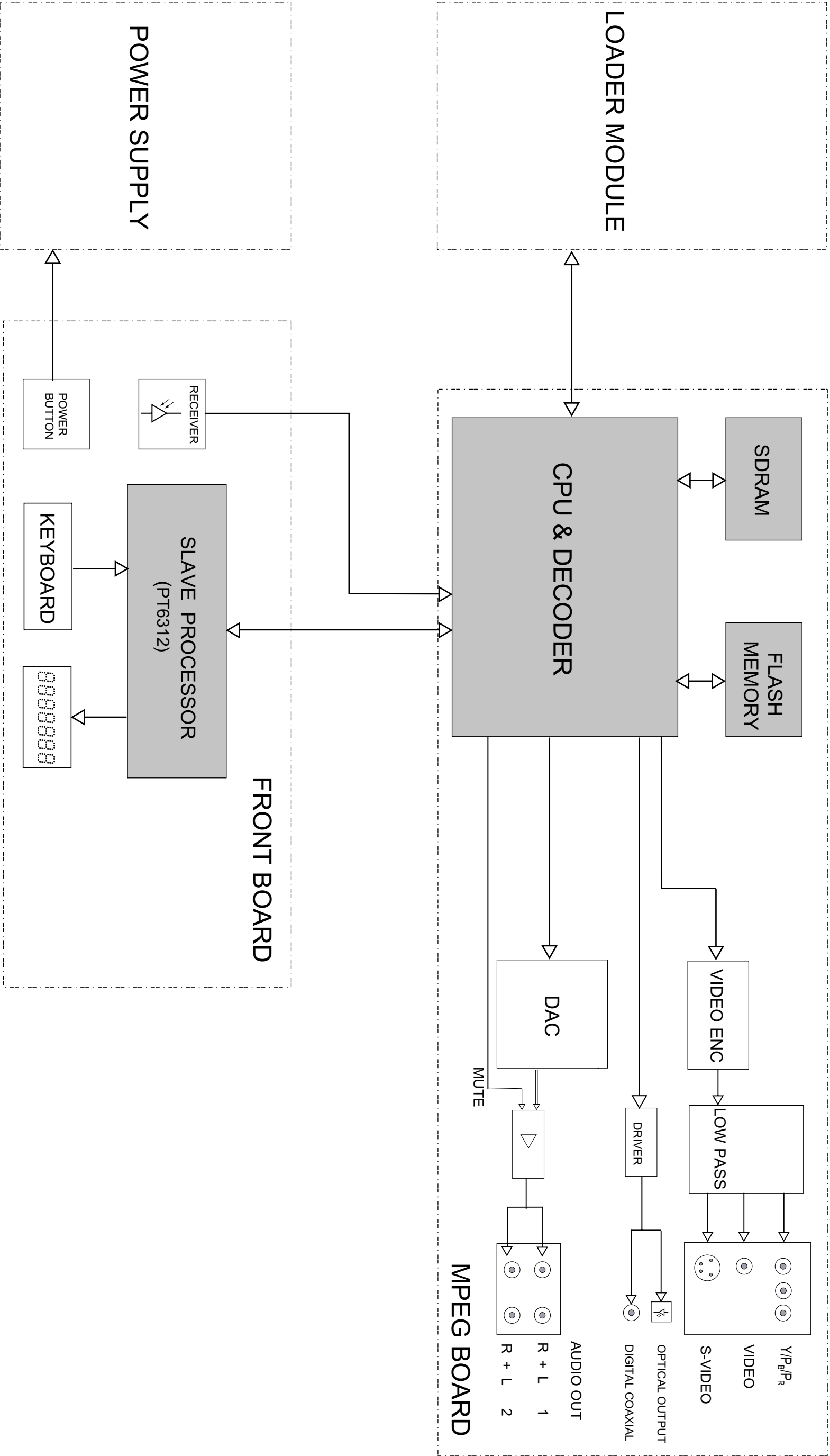
ITEM	12NC	DESCRIPTION
0200	314101776120	FRONT ASSY DVD724
0205	314101775680	BUTTON POWER DVD736K PNT
0207	314101775710	DOOR TRAY DVD736K/AP PNT PRT
0213	314101776690	FRAME ASSY DVD765K
0214	314101424860	BRACKET DVD736K
0224	314101776680	BACK PLATE DVD724/78X PPT
0232	314101776080	COVER TOP DVD736K/691 PAINT
0260	314011322100	MAINSKCORD -RELIEF/37
0384	314101790220	REMOTE CONTROL RC2K16
1001	314101802930	PBAS PSU 90PS-132 WR
1002	314101803190	PBAS MPEG DVD724/781
1003	314101803120	DVD LOADER MODULE A95HDC
1004	314101802650	PBAS FRONT DVD736K/931
5001	314101871300	MAIN CORD M7.92VH 1.60M
8001	314101021020	CWAS 40RK/40RK 260 28S
8002	314101021200	CWAS 08XH/08XH 410 8 WH 26S
8003	314101020850	CWAS 04XH/04LC 260 22S



DVD724/781 EXPLODED VIEW

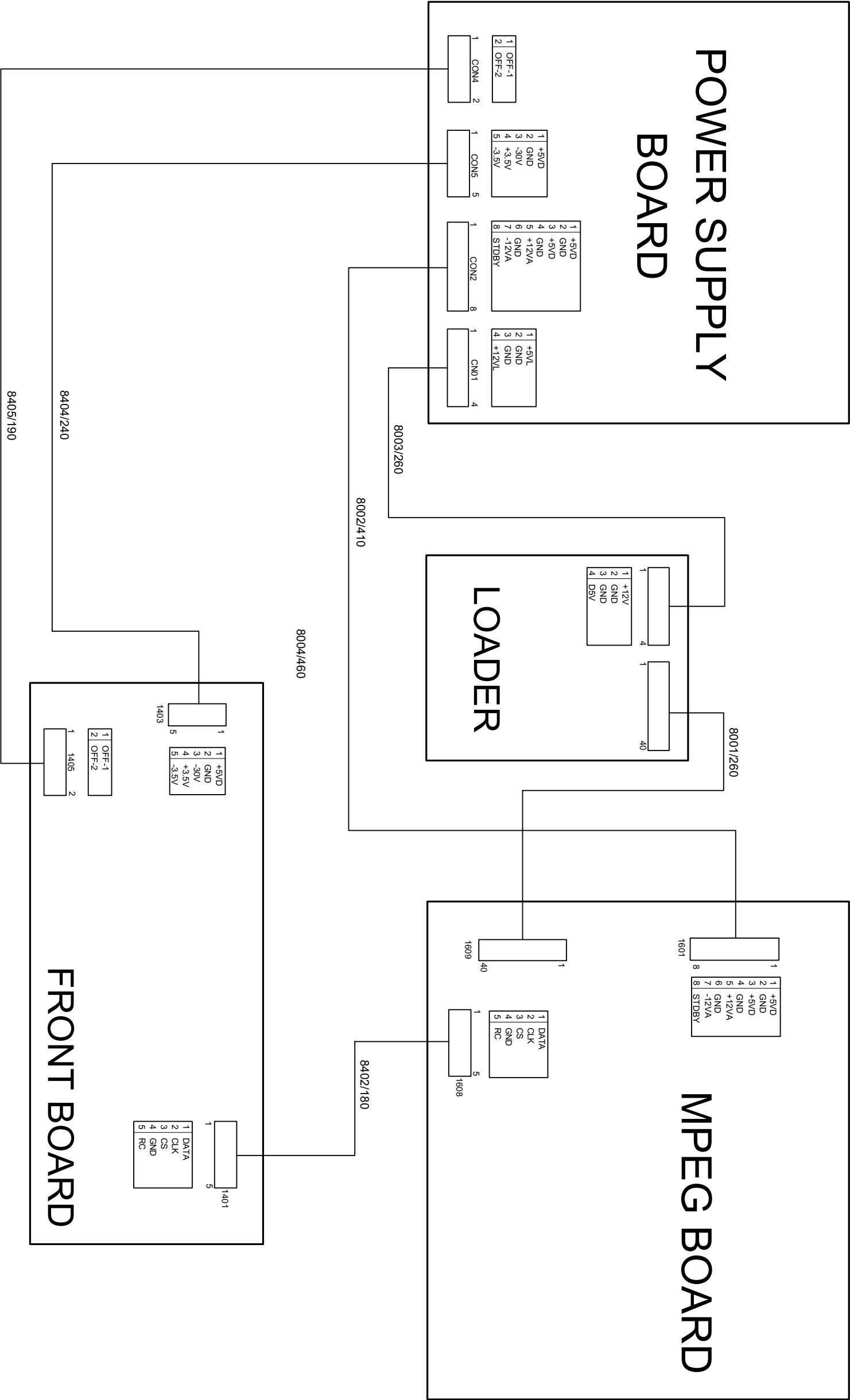
6. Block- and wiring diagram

Block diagram DVD724/781

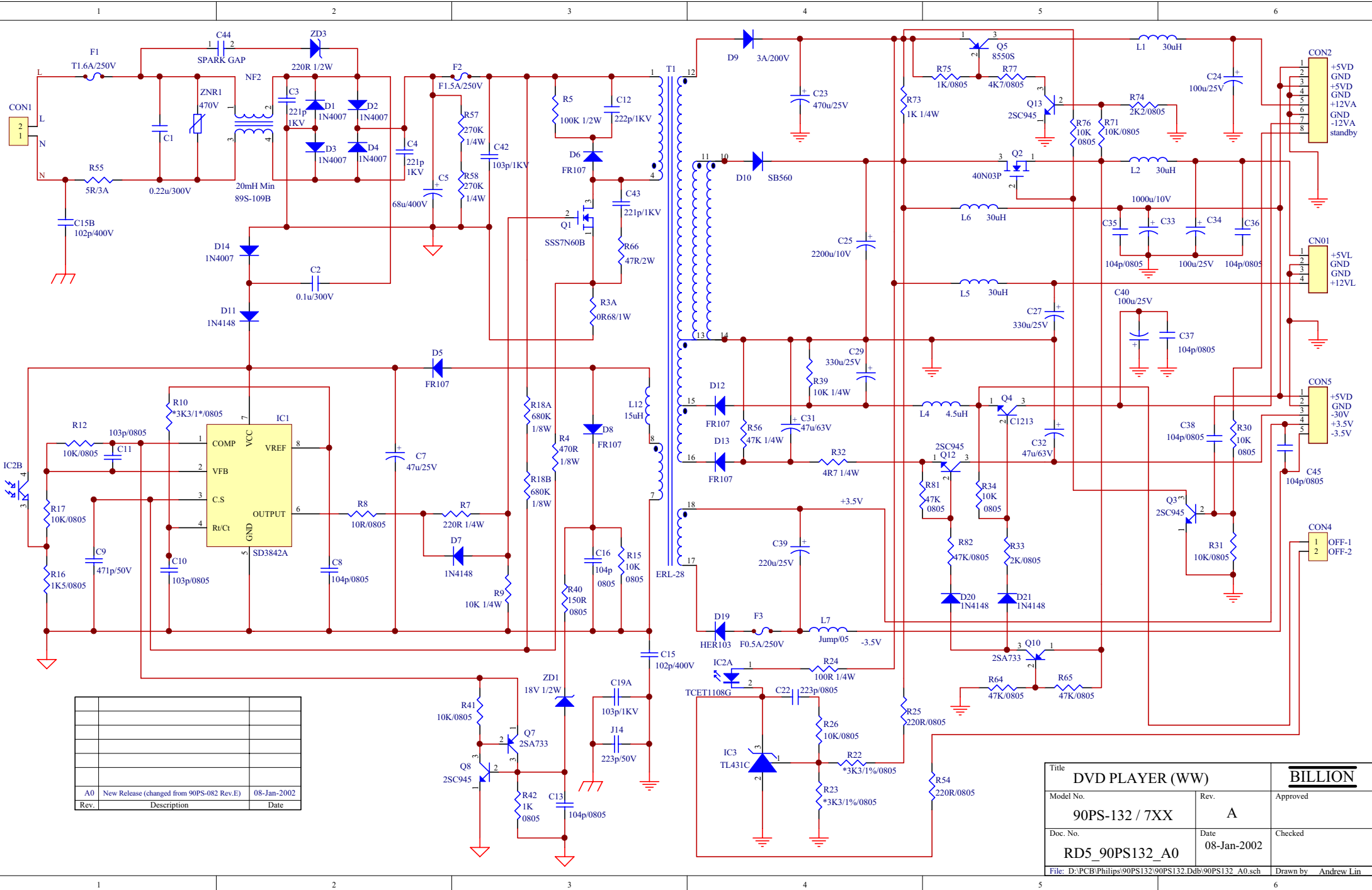


6. Block- and wiring diagram

Wiring diagram DVD724/781



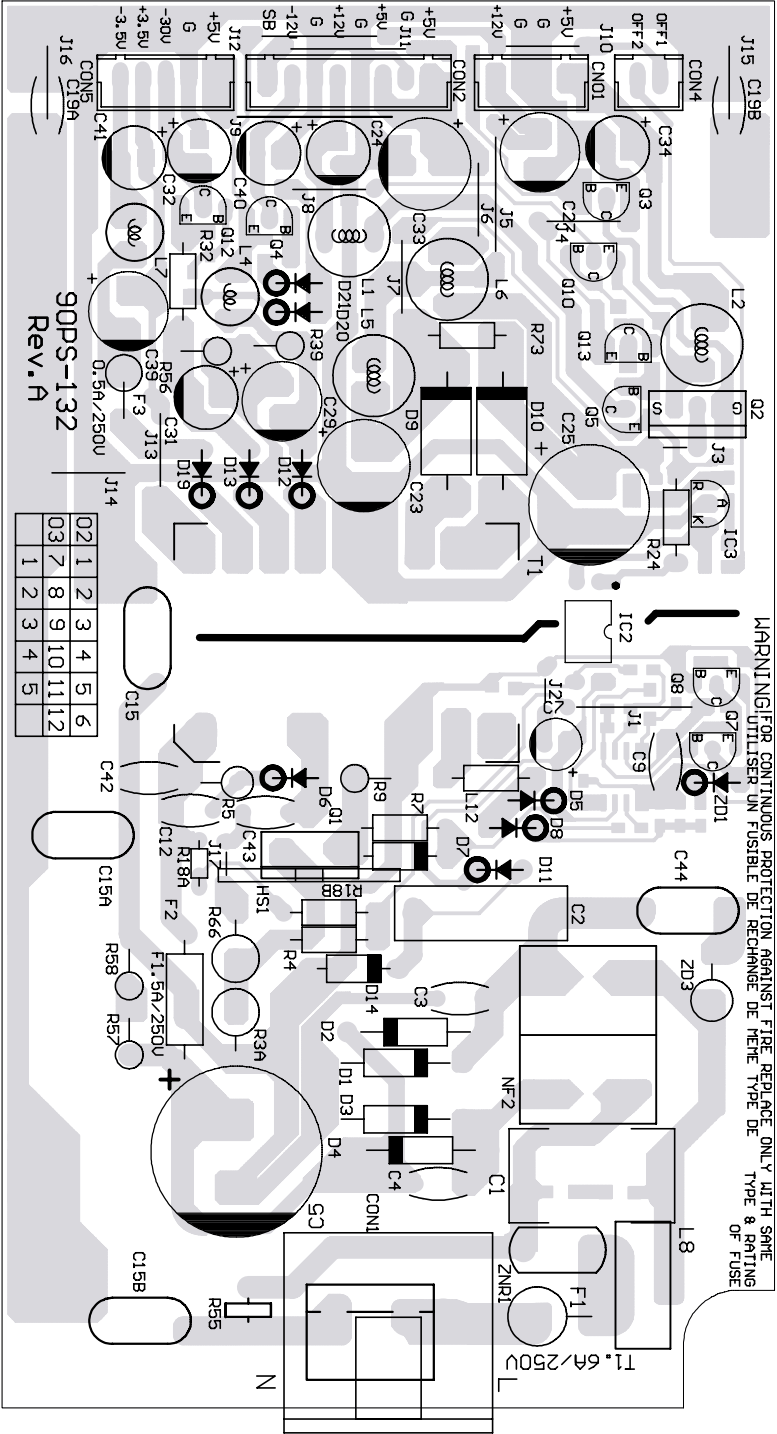
CIRCUIT DIAGRAM



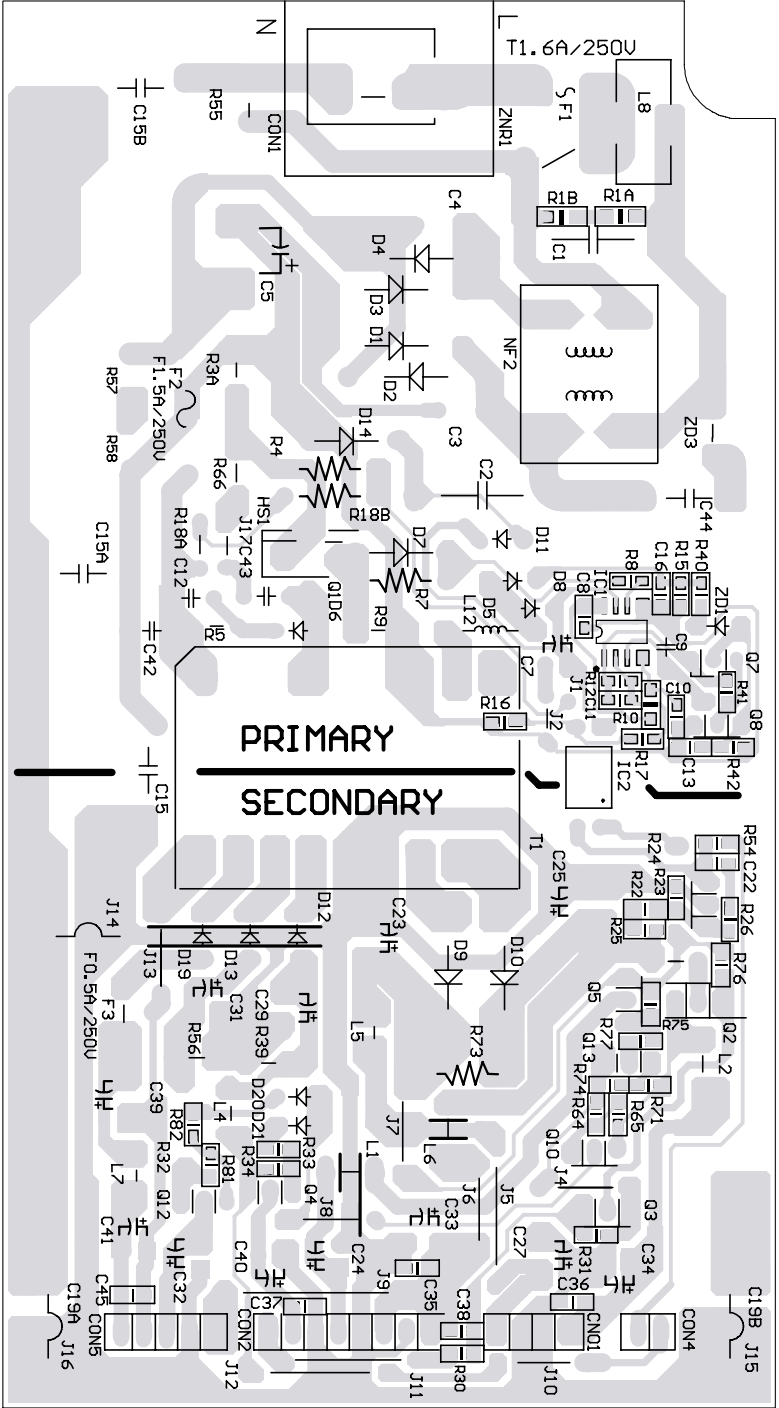
Title DVD PLAYER (WW)		BILLION	
Model No. 90PS-132 / 7XX	Rev. A	Approved	
Doc. No. RD5_90PS132_A0	Date 08-Jan-2002	Checked	
File: D:\PCB\Philips\90PS132\90PS132.Ddb\90PS132_A0.sch		Drawn by	Andrew Lin

Layout Power supply board DVD724/781 (90PS-132)

Component side

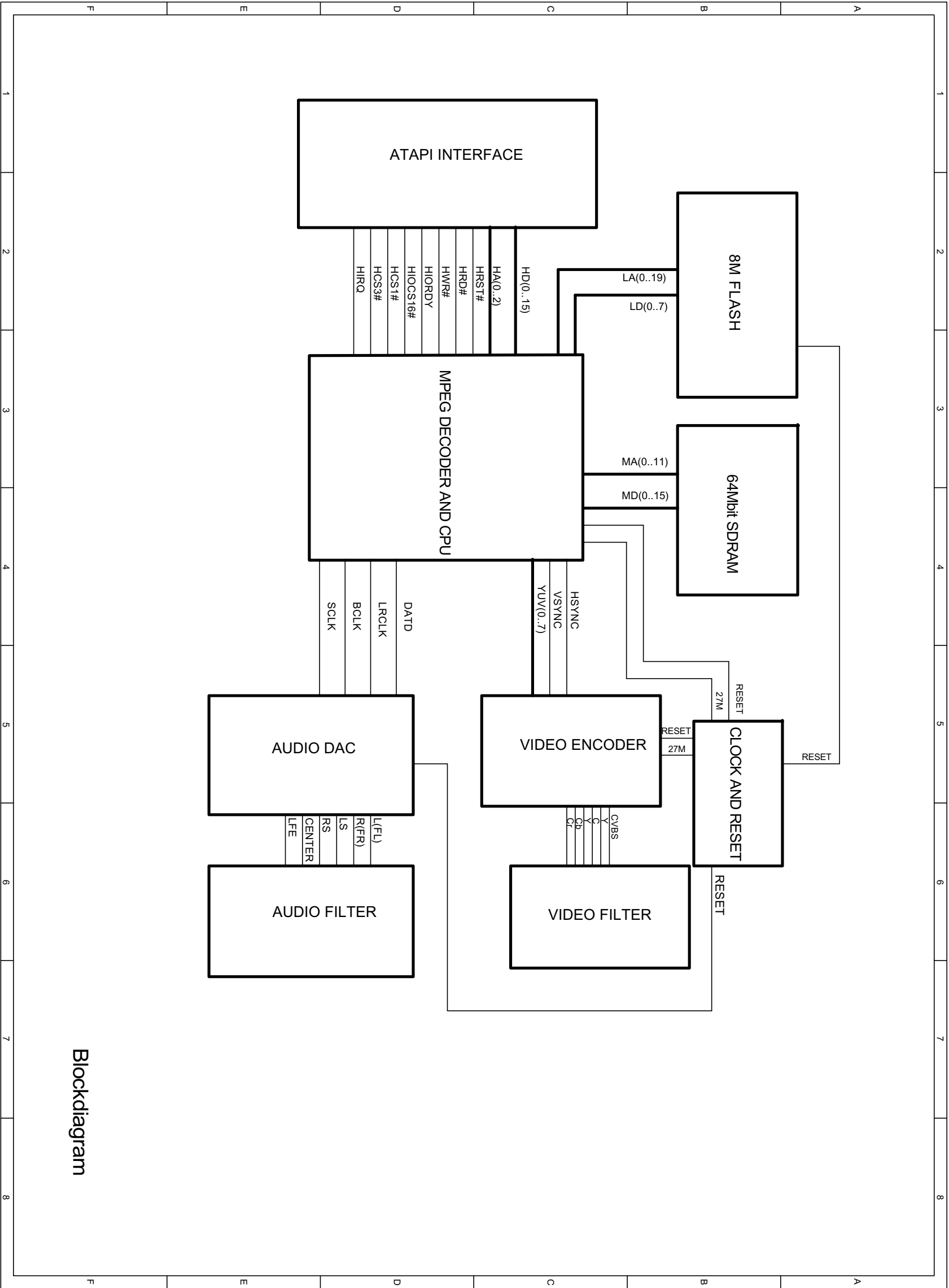


Copper side



MPEG board DVD724/781

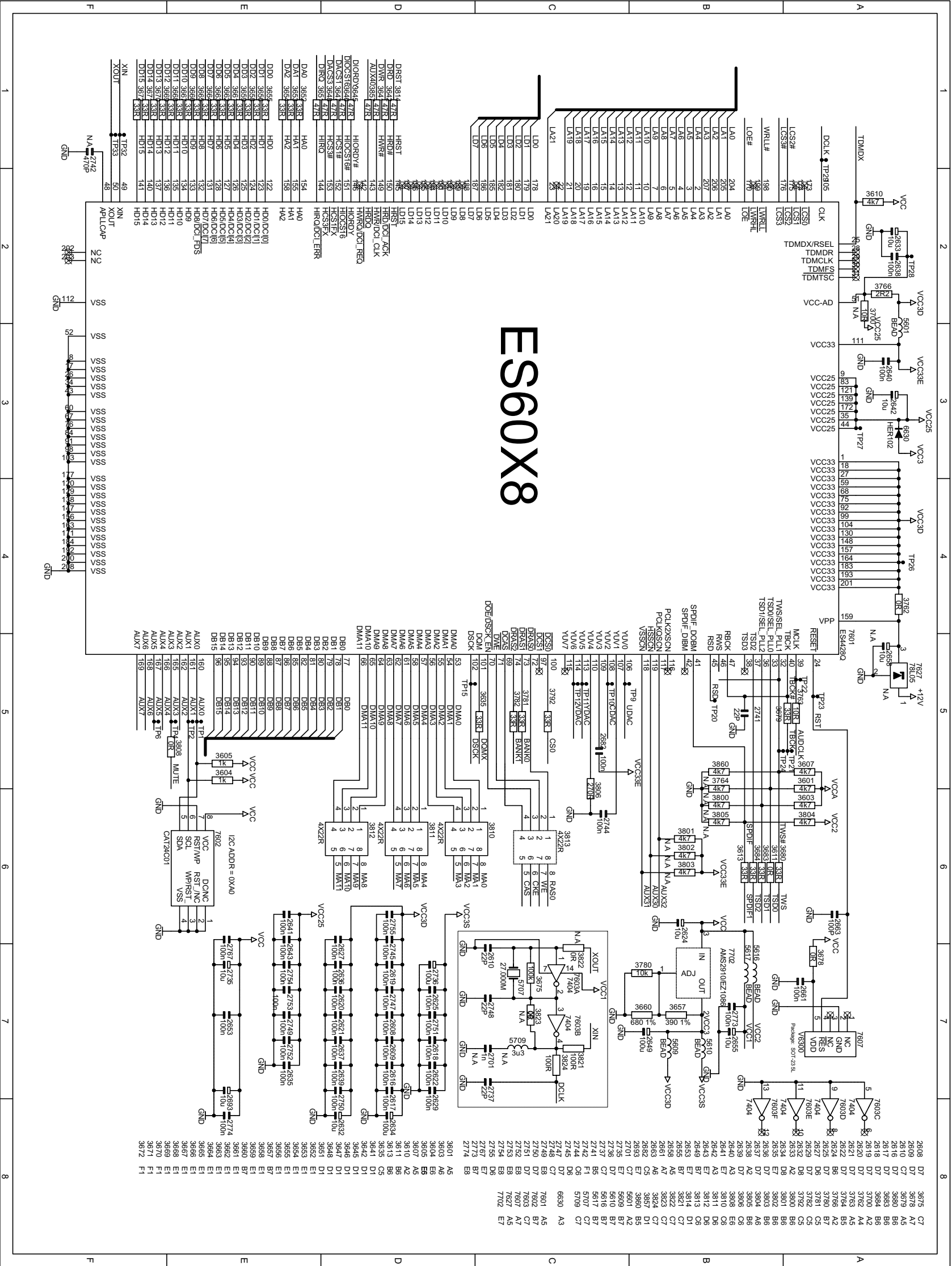
Blockdiagram



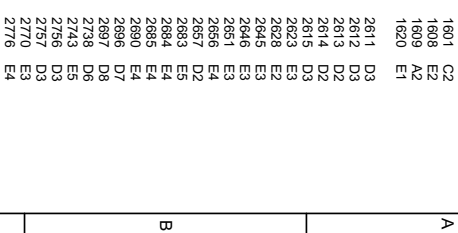
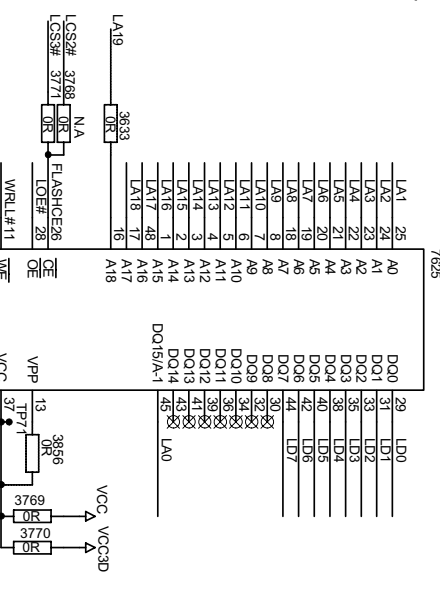
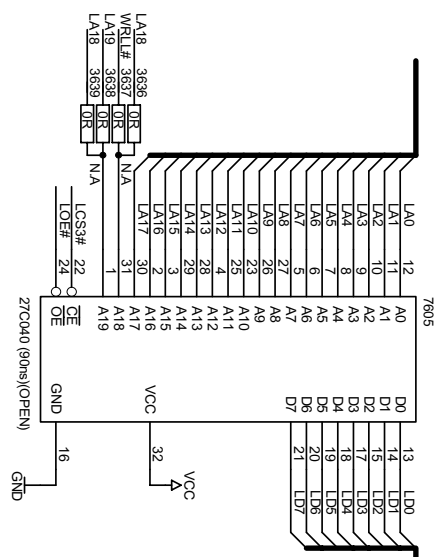
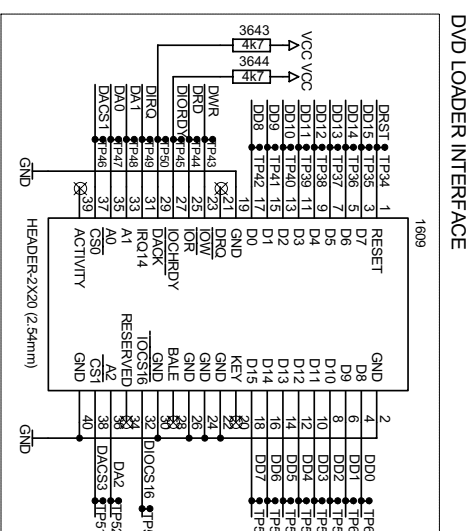
Blockdiagram

MPEG board DVD724/781

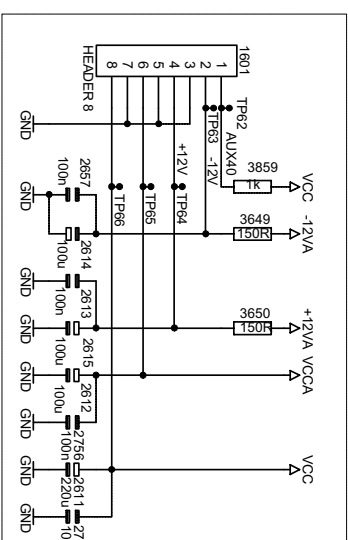
DVD Processor



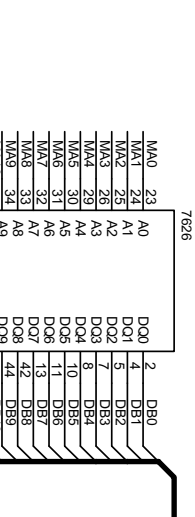
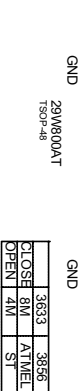
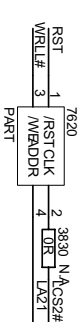
MPEG board DVD724/781
ATAPI & ROM



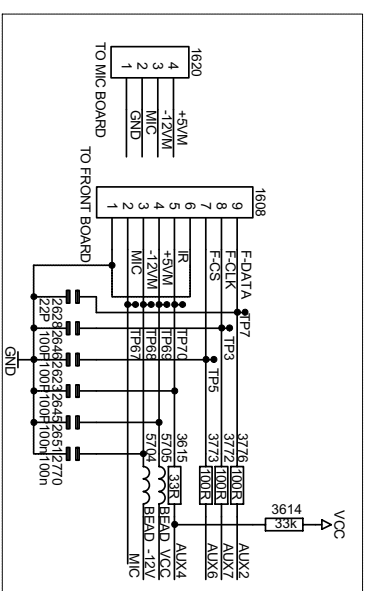
POWER INPUT



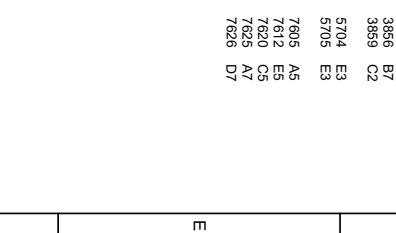
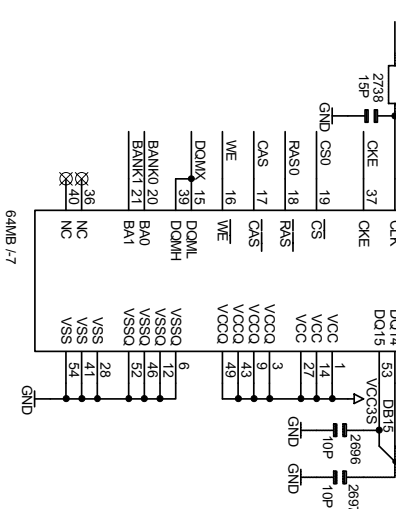
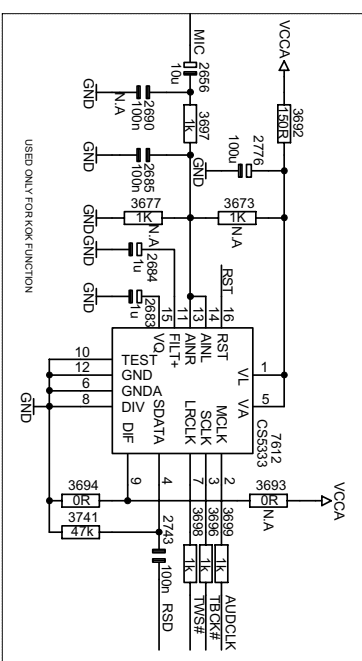
	FLSAH	EEPROM
3636	OPEN	
3637	CLOSE	
3638	OPEN	
3639		



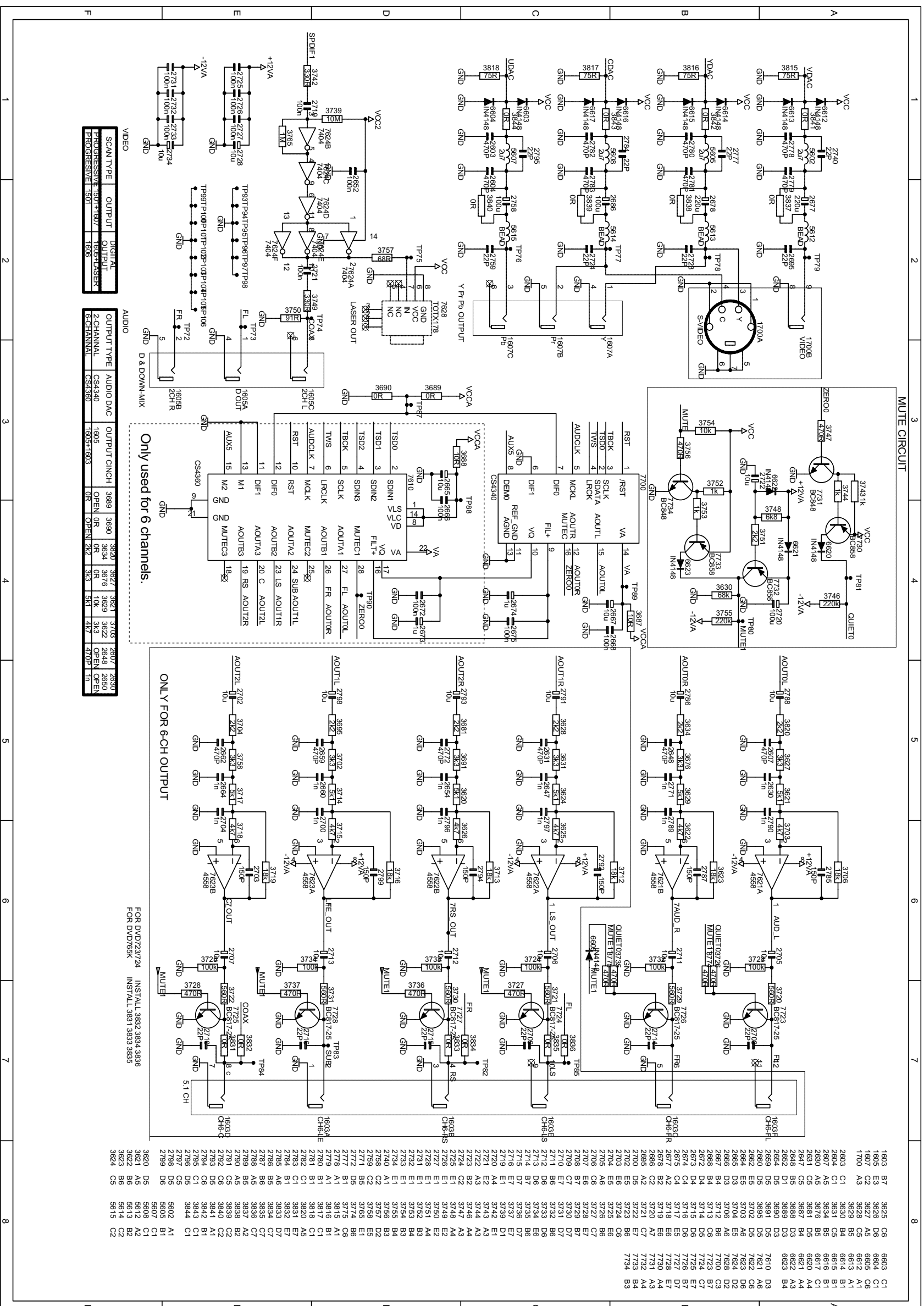
MIC CONNECTOR



MIC ADC (NOT USED FOR DVD724/781)



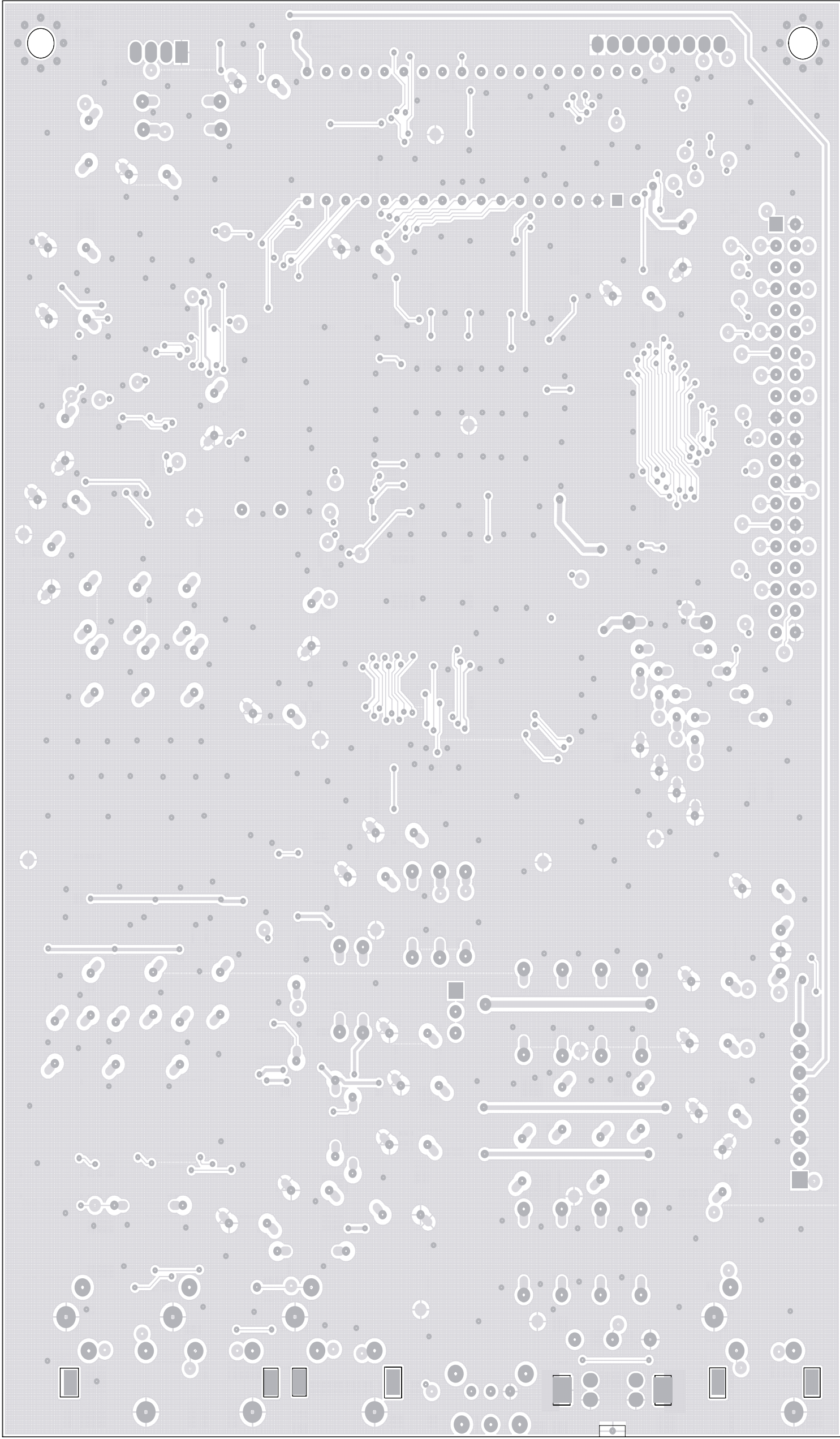
MPEG board DVD724/781



Layout MPEG board (component side) DVD724/781

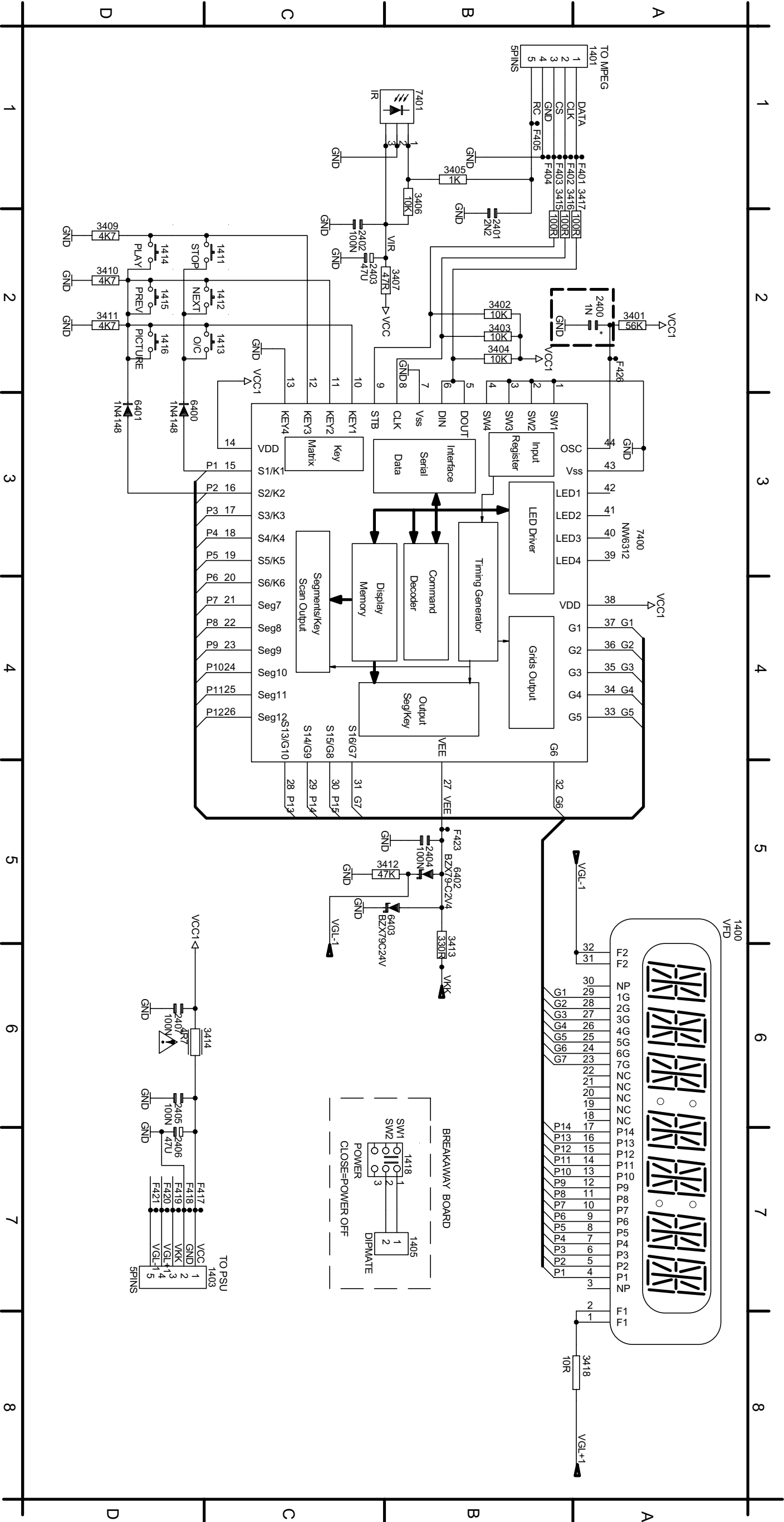
A	1	1601 A5 1603 E6 1607 C7 1608 A6 1609 A7 1620 D7 1700 2603 B4	2	2604 C5 2607 E5 2608 C2 2610 D4 2611 A5 2612 B4 2613 A6 2614 A6 2615 A6	3	2616 B2 2617 B2 2618 C2 2619 C2 2620 C2 2621 C2 2622 C2 2623 C2 2624 C2 2625 C2	4	2626 B2 2627 C2 2628 C2 2629 C2 2630 C2 2631 C2 2632 C2 2633 C2 2634 C2 2635 C2	5	2636 B2 2637 C2 2638 C2 2639 C2 2640 C2 2641 C2 2642 C2 2643 C2 2644 C2 2645 C2	6	2646 B2 2647 C2 2648 C2 2649 C2 2650 C2 2651 C2 2652 C2 2653 C2 2654 C2 2655 C2	7	2656 B2 2657 C2 2658 C2 2659 C2 2660 C2 2661 C2 2662 C2 2663 C2 2664 C2 2665 C2
B	1	2666 B2 2667 C2 2668 C2 2669 C2 2670 C2 2671 C2 2672 C2 2673 C2 2674 C2 2675 C2	2	2676 B2 2677 C2 2678 C2 2679 C2 2680 C2 2681 C2 2682 C2 2683 C2 2684 C2 2685 C2	3	2686 B2 2687 C2 2688 C2 2689 C2 2690 C2 2691 C2 2692 C2 2693 C2 2694 C2 2695 C2	4	2696 B2 2697 C2 2698 C2 2699 C2 2700 C2 2701 C2 2702 C2 2703 C2 2704 C2 2705 C2	5	2706 B2 2707 C2 2708 C2 2709 C2 2710 C2 2711 C2 2712 C2 2713 C2 2714 C2 2715 C2	6	2716 B2 2717 C2 2718 C2 2719 C2 2720 C2 2721 C2 2722 C2 2723 C2 2724 C2 2725 C2	7	2726 B2 2727 C2 2728 C2 2729 C2 2730 C2 2731 C2 2732 C2 2733 C2 2734 C2 2735 C2
C	1	2736 B2 2737 C2 2738 C2 2739 C2 2740 C2 2741 C2 2742 C2 2743 C2 2744 C2 2745 C2	2	2746 B2 2747 C2 2748 C2 2749 C2 2750 C2 2751 C2 2752 C2 2753 C2 2754 C2 2755 C2	3	2756 B2 2757 C2 2758 C2 2759 C2 2760 C2 2761 C2 2762 C2 2763 C2 2764 C2 2765 C2	4	2766 B2 2767 C2 2768 C2 2769 C2 2770 C2 2771 C2 2772 C2 2773 C2 2774 C2 2775 C2	5	2776 B2 2777 C2 2778 C2 2779 C2 2780 C2 2781 C2 2782 C2 2783 C2 2784 C2 2785 C2	6	2786 B2 2787 C2 2788 C2 2789 C2 2790 C2 2791 C2 2792 C2 2793 C2 2794 C2 2795 C2	7	2796 B2 2797 C2 2798 C2 2799 C2 2800 C2 2801 C2 2802 C2 2803 C2 2804 C2 2805 C2
D	1	2806 B2 2807 C2 2808 C2 2809 C2 2810 C2 2811 C2 2812 C2 2813 C2 2814 C2 2815 C2	2	2816 B2 2817 C2 2818 C2 2819 C2 2820 C2 2821 C2 2822 C2 2823 C2 2824 C2 2825 C2	3	2826 B2 2827 C2 2828 C2 2829 C2 2830 C2 2831 C2 2832 C2 2833 C2 2834 C2 2835 C2	4	2836 B2 2837 C2 2838 C2 2839 C2 2840 C2 2841 C2 2842 C2 2843 C2 2844 C2 2845 C2	5	2846 B2 2847 C2 2848 C2 2849 C2 2850 C2 2851 C2 2852 C2 2853 C2 2854 C2 2855 C2	6	2856 B2 2857 C2 2858 C2 2859 C2 2860 C2 2861 C2 2862 C2 2863 C2 2864 C2 2865 C2	7	2866 B2 2867 C2 2868 C2 2869 C2 2870 C2 2871 C2 2872 C2 2873 C2 2874 C2 2875 C2
E	1	2876 B2 2877 C2 2878 C2 2879 C2 2880 C2 2881 C2 2882 C2 2883 C2 2884 C2 2885 C2	2	2886 B2 2887 C2 2888 C2 2889 C2 2890 C2 2891 C2 2892 C2 2893 C2 2894 C2 2895 C2	3	2896 B2 2897 C2 2898 C2 2899 C2 2900 C2 2901 C2 2902 C2 2903 C2 2904 C2 2905 C2	4	2906 B2 2907 C2 2908 C2 2909 C2 2910 C2 2911 C2 2912 C2 2913 C2 2914 C2 2915 C2	5	2916 B2 2917 C2 2918 C2 2919 C2 2920 C2 2921 C2 2922 C2 2923 C2 2924 C2 2925 C2	6	2926 B2 2927 C2 2928 C2 2929 C2 2930 C2 2931 C2 2932 C2 2933 C2 2934 C2 2935 C2	7	2936 B2 2937 C2 2938 C2 2939 C2 2940 C2 2941 C2 2942 C2 2943 C2 2944 C2 2945 C2

Layout MPEG board (copper side) DVD724/781



Front board DVD724/781

1400	A5	1411	C2	1415	D2	2401	B2	2405	D6	3402	B2	3406	B1	3411	D2	3415	B1	6400	D3
1401	B1	1412	C2	1416	D2	2402	C2	2406	D7	3403	B2	3407	B2	3412	B5	3416	A1	6401	D3
1403	D7	1413	C2	1418	B7	2403	B2	2407	D6	3404	B2	3409	D2	3413	B5	3417	A1	6402	B5
1405	B7	1414	D2	2400	A2	2404	B5	3401	A2	3405	B1	3410	D2	3414	D6	3418	A8	6403	C5



8. Spare parts list DVD724/781

Mechanical					
200	3141 017 76120	FRONT ASSY DVD724	2618	2222 586 18812	CER2 0603 X7R 50V 100N PM10 R
205	3141 017 75680	BUTTON POWER DVD736K PNT	2619	2222 586 18812	CER2 0603 X7R 50V 100N PM10 R
207	3141 017 75710	DOOR TRAY DVD736K/AP PNT PRT	2620	2222 586 18812	CER2 0603 X7R 50V 100N PM10 R
213	3141 017 76690	FRAME ASSY DVD765K	2621	2222 586 18812	CER2 0603 X7R 50V 100N PM10 R
214	3141 014 24860	BRACKET DVD736K	2622	2222 586 18812	CER2 0603 X7R 50V 100N PM10 R
224	3141 017 76680	BACK PLATE DVD724/78X PPT	2623	2020 552 94427	CER1 0603 NPO 50V 100P PM5 R
232	3141 017 76080	COVER TOP DVD736K/691 PAINT	2624	4822 124 11947	10UF 20% 16V
260	3140 113 22100	MAINS CORD RELIEF/37	2625	2222 586 18812	CER2 0603 X7R 50V 100N PM10 R
384	3141 017 90220	REMOTE CONTROL DVD-Q30/751	2627	2222 586 18812	CER2 0603 X7R 50V 100N PM10 R
Δ 1001	3141 018 02930	PBAS PSU 90PS-132 WR BILLION	2628	4822 122 33741	10PF10%NPO 50V
	1002	3141 018 03190	2629	2222 586 18812	CER2 0603 X7R 50V 100N PM10 R
1003	3141 018 03120	DVD LOADER MODULE A95HDC	2632	4822 124 11947	10UF 20% 16V
	1004	3141 018 02650	2633	4822 124 11947	10UF 20% 16V
Δ 5001	3141 018 71300	MAIN CORD M7.92VH 1.60M	2634	4822 124 40207	100UF20% 25V
	8001	3141 010 21020	2635	2222 586 18812	CER2 0603 X7R 50V 100N PM10 R
8002	3141 010 21200	CWAS 08XH/08XH 410 26S	2636	2222 586 18812	CER2 0603 X7R 50V 100N PM10 R
8003	3141 010 20850	CWAS XH4P/LC4P 260 22S	2637	2222 586 18812	CER2 0603 X7R 50V 100N PM10 R
MPEG BOARD 3141 018 03190			2638	2222 586 18812	CER2 0603 X7R 50V 100N PM10 R
MISCELLANEOUS			2639	2222 586 18812	CER2 0603 X7R 50V 100N PM10 R
1601	2422 025 09074	CONNECTOR 8P TOP	2640	2222 586 18812	CER2 0603 X7R 50V 100N PM10 R
1603	3141 010 30380	CON BM CINCH V 5P F B	2641	2222 586 18812	CER2 0603 X7R 50V 100N PM10 R
1607	3141 010 30300	CON BM CINCH V 3P F GNBURD	2642	4822 124 11947	10UF 20% 16V
1608	4822 267 40624	5-FOLD X	2643	2222 586 18812	CER2 0603 X7R 50V 100N PM10 R
1609	3141 010 30350	CON BM V 40P M 2.54 1-440094-2	2645	2020 552 94427	CER1 0603 NPO 50V 100P PM5 R
1700	3141 010 30250	CON S-VEDIO AND CVBS	2646	2020 552 94427	CER1 0603 NPO 50V 100P PM5 R
CAPACITORS			2649	4822 124 40207	100UF20% 25V
2603	4822 126 13881	470PF 5% 50V	2652	2222 586 18812	CER2 0603 X7R 50V 100N PM10 R
2604	4822 126 13881	470PF 5% 50V	2655	4822 124 11947	10UF 20% 16V
2608	2222 586 18812	CER2 0603 X7R 50V 100N PM10 R	2657	2222 586 18812	CER2 0603 X7R 50V 100N PM10 R
2609	2222 586 18812	CER2 0603 X7R 50V 100N PM10 R	2661	2222 586 18812	CER2 0603 X7R 50V 100N PM10 R
2610	9965 000 05913	22PF +-2% 50V	2663	2020 552 94427	CER1 0603 NPO 50V 100P PM5 R
2611	4822 124 40196	220UF20% 16V	2667	4822 124 11947	10UF 20% 16V
2612	4822 124 40207	100UF20% 25V	2668	2222 586 18812	CER2 0603 X7R 50V 100N PM10 R
2613	2222 586 18812	CER2 0603 X7R 50V 100N PM10 R	2672	2222 586 18812	CER2 0603 X7R 50V 100N PM10 R
2614	4822 124 40207	100UF20% 25V	2673	4822 124 21913	1UF20% 63V
2615	4822 124 40207	100UF20% 25V	2674	4822 124 21913	1UF20% 63V
2616	2222 586 18812	CER2 0603 X7R 50V 100N PM10 R	2675	2222 586 18812	CER2 0603 X7R 50V 100N PM10 R
2617	2222 586 18812	CER2 0603 X7R 50V 100N PM10 R	2682	2222 586 18812	CER2 0603 X7R 50V 100N PM10 R
			2695	9965 000 05913	22PF +-2% 50V
			2705	4822 124 11947	10UF 20% 16V
			2711	4822 124 11947	10UF 20% 16V
			2714	9965 000 05913	22PF +-2% 50V
			2719	2222 586 18812	CER2 0603 X7R 50V 100N PM10 R
			2720	4822 124 40207	100UF20% 25V
			2721	2222 586 18812	CER2 0603 X7R 50V 100N PM10 R
			2722	4822 124 11947	10UF 20% 16V
			2723	9965 000 05913	22PF +-2% 50V
			2724	9965 000 05913	22PF +-2% 50V
			2725	2222 586 18812	CER2 0603 X7R 50V 100N PM10 R
			2728	4822 124 11947	10UF 20% 16V
			2732	2222 586 18812	CER2 0603 X7R 50V 100N PM10 R
			2734	4822 124 11947	10UF 20% 16V
			2736	4822 124 40207	100UF20% 25V
			2737	9965 000 05913	22PF +-2% 50V
			2738	4822 122 33752	15PF 5%NPO 50V
			2744	2222 586 18812	CER2 0603 X7R 50V 100N PM10 R
			2745	2222 586 18812	CER2 0603 X7R 50V 100N PM10 R
			2747	2222 586 18812	CER2 0603 X7R 50V 100N PM10 R
			2748	9965 000 05913	22PF +-2% 50V
			2749	2222 586 18812	CER2 0603 X7R 50V 100N PM10 R
			2750	2222 586 18812	CER2 0603 X7R 50V 100N PM10 R
			2751	2222 586 18812	CER2 0603 X7R 50V 100N PM10 R
			2752	2222 586 18812	CER2 0603 X7R 50V 100N PM10 R
			2753	2222 586 18812	CER2 0603 X7R 50V 100N PM10 R
			2754	2222 586 18812	CER2 0603 X7R 50V 100N PM10 R
			2755	2222 586 18812	CER2 0603 X7R 50V 100N PM10 R
			2756	2222 586 18812	CER2 0603 X7R 50V 100N PM10 R
			2757	2222 586 18812	CER2 0603 X7R 50V 100N PM10 R
			2759	9965 000 05913	22PF +-2% 50V
			2773	2222 586 18812	CER2 0603 X7R 50V 100N PM10 R
			2774	2222 586 18812	CER2 0603 X7R 50V 100N PM10 R
			2778	4822 126 13881	470PF 5% 50V
			2779	4822 126 13881	470PF 5% 50V
			2780	4822 126 13881	470PF 5% 50V
			2781	4822 126 13881	470PF 5% 50V
			2782	4822 126 13881	470PF 5% 50V
			2783	4822 126 13881	470PF 5% 50V
			2785	4822 122 33753	150PF 5%NPO 50V
			2786	4822 124 11947	10UF 20% 16V
			2787	4822 122 33753	150PF 5%NPO 50V
			2788	4822 124 11947	10UF 20% 16V
			2789	5322 126 11578	1NF 10% X7R 50V 0603
			2790	5322 126 11578	1NF 10% X7R 50V 0603
RESISTORS			3604	4822 051 30102	1K00 5% 0,062W
			3605	4822 051 30102	1K00 5% 0,062W
			3610	4822 051 30472	4K70 5% 0,062W
			3611	4822 051 30008	0R00 JUMPER
			3613	4822 051 30339	33R00 5% 0,062W

8. Spare parts list DVD724/781

3614	4822 051 30333	33K00	5%	0,062W	3678	4822 051 30008	0R00 JUMPER	3782	4822 051 30339	33R00	5%	0,062W			
3615	4822 051 30339	33R00	5%	0,062W	3679	4822 051 30339	33R00	5%	0,062W	3792	4822 051 30339	33R00	5%	0,062W	
3621	4822 051 30103	10K00	5%	0,062W	3680	4822 051 30339	33R00	5%	0,062W	3800	4822 051 30472	4K70	5%	0,062W	
3622	4822 051 30332	3K30	5%	0,062W	3687	4822 051 30109	10R00	5%	0,062W	3804	4822 051 30472	4K70	5%	0,062W	
3623	4822 051 30183	18K00	5%	0,062W	3690	4822 051 30008	0R00 JUMPER	3806	4822 051 30271	270R00	5%	0,062W			
3627	4822 051 30008	0R00 JUMPER			3703	4822 051 30332	3K30	5%	0,062W	3808	4822 051 30008	0R00 JUMPER			
3629	4822 051 30103	10K00	5%	0,062W	3706	4822 051 30183	18K00	5%	0,062W	3810	2120 108 94042	RST NETW SM RAC16 4X22R PM5 R			
3630	4822 051 30683	68K00	5%	0,062W	3720	4822 051 30561	560R00	5%	0,062W	3811	2120 108 94042	RST NETW SM RAC16 4X22R PM5 R			
3633	4822 051 30008	0R00 JUMPER			3723	4822 117 13632	100K 1%	0603 0,62W	3812	2120 108 94042	RST NETW SM RAC16 4X22R PM5 R				
3634	4822 051 30008	0R00 JUMPER			3726	5322 117 13049	470R 1%	0.063W 0603 RC22H	3813	2120 108 94042	RST NETW SM RAC16 4X22R PM5 R				
3635	4822 051 30339	33R00	5%	0,062W	3729	4822 051 30561	560R00	5%	0,062W	3814	4822 051 30479	47R00	5%	0,062W	
3641	4822 051 30479	47R00	5%	0,062W	3732	4822 117 13632	100K 1%	0603 0,62W	3815	4822 051 30759	75R00	5%	0,062W		
3642	4822 051 30479	47R00	5%	0,062W	3735	5322 117 13049	470R 1%	0.063W 0603 RC22H	3816	4822 051 30759	75R00	5%	0,062W		
3643	4822 051 30472	4K70	5%	0,062W	3739	3198 021 31060	RST SM 0603 10M PM5COL R	3817	4822 051 30759	75R00	5%	0,062W			
3644	4822 051 30472	4K70	5%	0,062W	3741	4822 117 12925	47K 1%	0.063W 0603	3818	4822 051 30759	75R00	5%	0,062W		
3645	4822 051 30479	47R00	5%	0,062W	3742	4822 051 30331	330R00	5%	0,062W	3820	4822 051 30008	0R00 JUMPER			
3646	4822 051 30479	47R00	5%	0,062W	3743	4822 051 30102	1K00	5%	0,062W	3821	4822 051 30339	33R00	5%	0,062W	
3647	4822 051 30479	47R00	5%	0,062W	3744	4822 051 30102	1K00	5%	0,062W	3824	4822 051 30339	33R00	5%	0,062W	
3648	4822 051 30479	47R00	5%	0,062W	3746	4822 117 12891	220K 1% ERJ3E	3832	4822 051 30008	0R00 JUMPER					
3649	4822 051 30151	150R00	5%	0,062W	3747	5322 117 13049	470R 1%	0.063W 0603 RC22H	3834	4822 051 30008	0R00 JUMPER				
3650	4822 051 30151	150R00	5%	0,062W	3748	5322 117 13053	6K8 1%	0.063W 0603 RC22H	3836	4822 051 30008	0R00 JUMPER				
3651	4822 051 30479	47R00	5%	0,062W	3749	4822 051 30331	330R00	5%	0,062W	3837	4822 051 30008	0R00 JUMPER			
3652	4822 051 30339	33R00	5%	0,062W	3750	2322 702 60919	RST SM 0603 RC21 91R PM5 R	3838	4822 051 30008	0R00 JUMPER					
3653	4822 051 30339	33R00	5%	0,062W	3751	4822 051 30222	2K20	5%	0,062W	3839	4822 051 30008	0R00 JUMPER			
3654	4822 051 30339	33R00	5%	0,062W	3752	4822 051 30102	1K00	5%	0,062W	3840	4822 051 30008	0R00 JUMPER			
3655	4822 051 30339	33R00	5%	0,062W	3753	4822 051 30102	1K00	5%	0,062W	3841	4822 051 30008	0R00 JUMPER			
3656	4822 051 30339	33R00	5%	0,062W	3754	4822 051 30103	10K00	5%	0,062W	3842	4822 051 30008	0R00 JUMPER			
3657	5322 117 13062	390R 1%	0.063W 0603 RC22H		3755	4822 117 12891	220K 1% ERJ3E	3843	4822 051 30008	0R00 JUMPER					
3658	4822 051 30339	33R00	5%	0,062W	3756	5322 117 13049	470R 1%	0.063W 0603 RC22H	3844	4822 051 30008	0R00 JUMPER				
3659	4822 051 30339	33R00	5%	0,062W	3757	4822 051 30689	68R 5%	0,063W 0603 RC21 RST SM	3855	4822 051 30109	10R00	5%	0,062W		
3660	4822 051 30681	680R00	5%	0,062W	3762	4822 051 30008	0R00 JUMPER	3857	4822 051 30479	47R00	5%	0,062W			
3661	4822 051 30339	33R00	5%	0,062W	3763	4822 051 30109	10R00	5%	0,062W	3859	4822 051 30102	1K00	5%	0,062W	
3662	4822 051 30339	33R00	5%	0,062W	3764	4822 051 30472	4K70	5%	0,062W	3860	4822 051 30472	4K70	5%	0,062W	
3663	4822 051 30339	33R00	5%	0,062W	3765	4822 051 30105	1M00	5%	0,062W						
3664	4822 051 30339	33R00	5%	0,062W	3766	4822 117 13498	2R2 5%	0,62W 0603							
3665	4822 051 30339	33R00	5%	0,062W	3770	4822 051 30008	0R00 JUMPER								
3666	4822 051 30339	33R00	5%	0,062W	3771	4822 051 30008	0R00 JUMPER								
3667	4822 051 30339	33R00	5%	0,062W	3772	4822 051 30101	100R00	5%	0,062W						
3668	4822 051 30339	33R00	5%	0,062W	3773	4822 051 30101	100R00	5%	0,062W						
3669	4822 051 30339	33R00	5%	0,062W	3774	5322 117 13049	470R 1%	0.063W 0603 RC22H							
3670	4822 051 30339	33R00	5%	0,062W	3775	5322 117 13049	470R 1%	0.063W 0603 RC22H							
3671	4822 051 30339	33R00	5%	0,062W	3776	4822 051 30101	100R00	5%	0,062W						
3672	4822 051 30339	33R00	5%	0,062W	3780	4822 051 30103	10K00	5%	0,062W						
3675	4822 117 13632	100K 1%	0603 0,62W		3781	4822 051 30339	33R00	5%	0,062W						
3676	4822 051 30008	0R00 JUMPER													

5601	8241 010 40420	LEADED FERRITE BEADS	
5602	4822 156 21721		
5605	4822 156 21721		
5607	4822 156 21721		
5608	4822 156 21721		
5609	8241 010 40420	LEADED FERRITE BEADS	
5610	8241 010 40420	LEADED FERRITE BEADS	
5612	8241 010 40420	LEADED FERRITE BEADS	

5601	8241 010 40420	LEADED FERRITE BEADS
5602	4822 156 21721	
5605	4822 156 21721	
5607	4822 156 21721	
5608	4822 156 21721	
5609	8241 010 40420	LEADED FERRITE BEADS
5610	8241 010 40420	LEADED FERRITE BEADS
5612	8241 010 40420	LEADED FERRITE BEADS

COILS & CRYSTAL QUARTZ

8. Spare parts list DVD724/781

<div>56138241 010 40420LEADED FERRITE BEADS</div> <div>56148241 010 40420LEADED FERRITE BEADS</div> <div>56158241 010 40420LEADED FERRITE BEADS</div> <div>56168241 010 40420LEADED FERRITE BEADS</div> <div>56178241 010 40420LEADED FERRITE BEADS</div> <div>57073141 018 80600CRYSTAL QUARTZ 27M FUNDAMENTAL</div>			<div>34164822 116 52175100E5%0.5W</div> <div>34174822 116 52175100E5%0.5W</div> <div>34184822 116 5217610E5%0.5W</div>		
<div>DIODE</div> <div>66034822 130 306211N4148</div> <div>66044822 130 306211N4148</div> <div>66054822 130 306211N4148</div> <div>66124822 130 306211N4148</div> <div>66134822 130 306211N4148</div> <div>66144822 130 306211N4148</div> <div>66154822 130 306211N4148</div> <div>66164822 130 306211N4148</div> <div>66174822 130 306211N4148</div> <div>66204822 130 306211N4148</div> <div>66214822 130 306211N4148</div> <div>66224822 130 306211N4148</div> <div>66234822 130 306211N4148</div> <div>66305322 130 31938BYV27-200</div>			<div>DIODES</div> <div>64004822 130 306211N4148</div> <div>64014822 130 306211N4148</div> <div>64024822 130 31253BZX79-C2V4</div> <div>64034822 130 34398BZX79-B24</div>		
<div>TRANSISTOR & IC</div> <div>76013141 018 51430IC SM ESS6028</div> <div>76035322 209 11517PC74HCU04T</div> <div>76073141 018 51120IC SM V6300</div> <div>76218241 010 45120IC SMD NJM4560</div> <div>76245322 209 11517PC74HCU04T</div> <div>76253141 017 40580IC M29W800AT PROG DVD DVD724/781</div> <div>76263141 018 51280IC DIG MOS STANDARD LOGIC</div> <div>76284822 130 10845GP1F32T</div> <div>77003141 018 51050IC SM CS4340</div> <div>77023141 018 51290IC ANA VOLT/CURR. REGULATOR</div> <div>77234822 130 42804BC817-25</div> <div>77264822 130 42804BC817-25</div> <div>77304822 130 60373BC856B</div> <div>77315322 130 60159BC846B</div> <div>77324822 130 60373BC856B</div> <div>77334822 130 60373BC856B</div>			<div>TRANSISTORS & INTEGRATED CIRCUITS</div> <div>74008241 010 40440IC PT6312 QFP44</div> <div>74013141 010 50200OPT IR RECEIVER 36KHZ HEG836</div>		

DVD Video Player
Owner's Manual



Let's make things better.



PHILIPS





English.....4

English

Español.....26

Español

Português.....48

Português

BRASIL

Garantía Página 70

MÉXICO



Garantía Página 71

México

Es necesario que lea cuidadosamente su instructivo de manejo.

**PRECAUCIÓN - ADVERTENCIA**
No abrir, riesgo de choque eléctrico

**ATENCIÓN**
Verifique que el voltaje de alimentación sea el requerido para su aparato

Para evitar el riesgo de choque eléctrico, no quite la tapa.
En caso de requerir servicio, diríjase al personal calificado.

REPRODUCTOR DE DISCO DE VIDEO DIGITAL **DVD736K/781**

110-240 V ~ 50-60 Hz 20W

IMPORTADOR: **PHILIPS MEXICANA, S.A. de C.V.**
Norte 45, # 669, Col. Industrial Vallejo
C.P. 02300 México D.F., Tel. 728 42 00

EXPORTADOR: **PHILIPS CONSUMER ELECTRONICS CO.**
PAIS DE ORIGEN: CHINA
RFC: PME620620E84

N° de Serie: _____

LEA CUIDADOSAMENTE ESTE INSTRUCTIVO ANTES DE USAR SU APARATO.



General Information

Since it is usual for DVD movies to be released at different times in different regions of the world, all players have region codes and discs can have an optional region code. If you load a disc of a different region code to your player, you will see the region code notice on the screen. The disc will not playback, and should be unloaded.



Manufactured under license from Dolby Laboratories. "Dolby", "Pro Logic" and the double-D symbol are trademarks of Dolby Laboratories.

Laser safety

This unit employs a laser. Due to possible eye injury, only a qualified service person should remove the cover or attempt to service this device.

USE OF CONTROLS OR ADJUSTMENTS OR PERFORMANCE OF PROCEDURES OTHER THAN THOSE SPECIFIED HEREIN MAY RESULT IN HAZARDOUS RADIATION EXPOSURE.

LASER

Type	Semiconductor laser GaAlAs
Wave length	650 nm (DVD) 780 nm (VCD/CD)
Output Power	7 mW (DVD) 10 mW (VCD/CD)
Beam divergence	60 degree

CAUTION

VISIBLE AND INVISIBLE LASER RADIATION
WHEN OPEN AVOID EXPOSURE TO BEAM

CAUTION

(WARNING LOCATION: ON THE BACKPLATE OF SET)

NEVER MAKE OR CHANGE CONNECTIONS WITH THE POWER SWITCHED ON.

For Customer Use:

Read carefully the information located at the rear panel of your DVD VIDEO player and enter below the Serial No. Retain this information for future reference.

Model No. DVD VIDEO

Serial No. _____

Important Note:

Due to the numerous versions of new CD-Audio copy protection or enhanced CD-Audio protection recently available on certain discs, Philips is unable to guarantee that this DVD player is fully compatible with such new discs. Should you have difficulty playing any such CD-Audio discs, kindly refer them to your CD-Audio disc retailer.



Contents

English

Introduction

Environmental Information	6
Supplied accessories	6
Safety Information	6
Symbols Used in this booklet	6

Functional overview

Front panel	7
Rear panel	7
Remote control	8

Preparation

Basic Connection	9
Connecting to a TV	9
Connecting to Optional Equipment	10
Connecting to a Audio System	10
Inserting batteries into the Remote Control ..	11
Using the Remote control	11
NTSC/PAL Conversion	11
Switching On	11

Operation

Basic Playback	12
General Operation	12
Video control during playback	12
Audio control during playback	12-13
Repeat	13
Repeat A-B	13
5 disc Resume	13
OSD (On-Screen Display)	13
Title Selection	13
Chapter Selection	13
Time Search	13
Zoom	14
Special DVD Features	14
Playing a title	14
Playing a chapter	14
Camera Angle	14
Changing the audio language	14
Subtitles	14
Special VCD & SVCD Features	15
Playback Control (PBC)	15
Preview function	15

Picture CD & MP3 CD Playback

Function introduction.....	16
Basic playback.....	16
Auto playback	16
Selection playback	16
Preview playback	16
Playback with multi-angles	16
Playback Speed Control	16
Zoom picture	16

Setup menu

Basic operation	17
General setup menu	17
Disc lock	17
Program	17
OSD language	18
Screen saver	18
Speaker setup page	18
DOWNMIX mode	18
D.R.C	18
SPDIF setup	19
SPDIF OUT setup	19
LPCM 96K mode	19
Video Output setup	19
Video output	19
TV display	20
TV type	20
Picture Source.....	20
Progressive Scan.....	21
Brightness.....	21
Preferences setup	21
Audio language	21
Subtitle language	21
Disc menu language	22
Password	22
Parental control	22
Default setup.....	23
Smart Navigator	23

Specifications

Specifications	24
----------------------	----

Maintenance

Maintenance	24
-------------------	----

Troubleshooting

Troubleshooting	25
-----------------------	----

Introduction

Thank you for purchasing this Philips DVD player. This Owner's Manual explains the basic operation of this DVD player.

Environmental Information

All unnecessary packaging has been omitted. We have tried to make the packaging easy to separate into three materials: cardboard (box), polystyrene foam (buffer) and polyethylene (bags, protective foam sheet).

Your DVD player consists of materials which can be recycled and reused if disassembled by a specialized company. Please observe the local regulations regarding the disposal of packaging materials, exhausted batteries and old equipment.

Supplied accessories

- DVD-Video player
- Remote control with Batteries
- Audio cable
- Video cable
- Owner's Manual

Safety Information





- Before operating the DVD player, check that the operating voltage indicated on the typeplate is identical with the voltage of your local power supply. If not, please consult your dealer.
- Place the DVD player on a flat, hard and stable surface.
- There must be sufficient room in front of the player for the drawer to be opened.
- In cabinet, allow about 2.5cm (1 inch) of free space all around the player for adequate ventilation.
- Do not expose your player to extreme of temperature or humidity.
- If the DVD player is brought directly from a cold to a warm location, or is placed in a very damp

room, moisture may condense on the lens of the disc unit inside the DVD player. Should this occur, the DVD player would not operate normally. Leave the power on for about one hour with no disc in the DVD player until normal playback is possible.

- The mechanical parts of the set contain self-lubricating bearings and must not be oiled or lubricated.
- When the DVD player is switched to Standby mode, it is still consuming some power. To disconnect the system from the power supply completely, remove the AC power plug from the wall socket.

Symbols Used in this Booklet

The below symbols appear in some headings and notes with the following meanings:

	- Description refers to playback of DVD-video discs
	- Description refers to playback of Video CDs
	- Description refers to playback of Audio CDs
	- Description refers to playback of Super VCDs

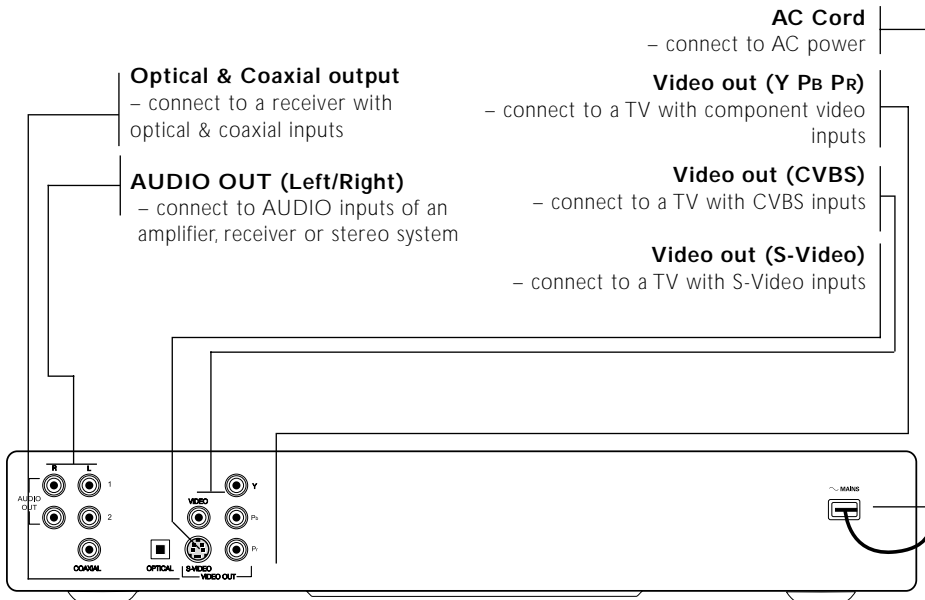
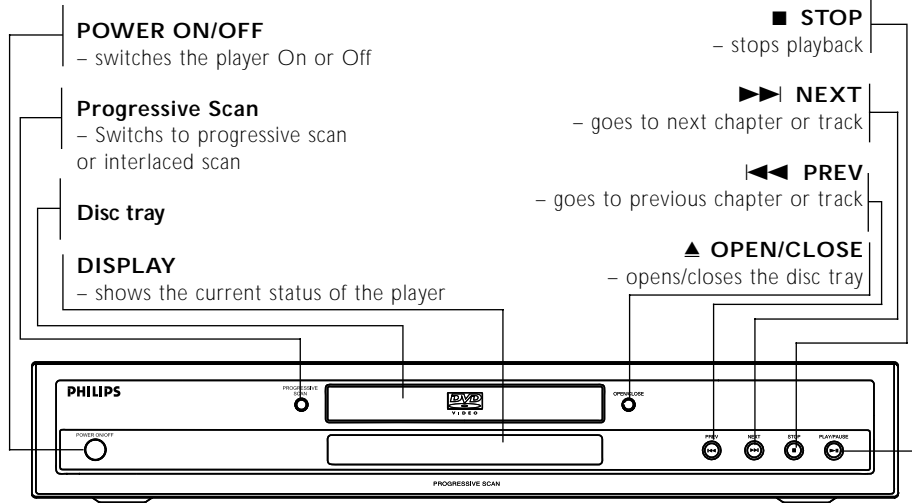
Helpful Hints!

- *Some DVD video discs require specific or allow only limited functions during playback.*



Functional Overview

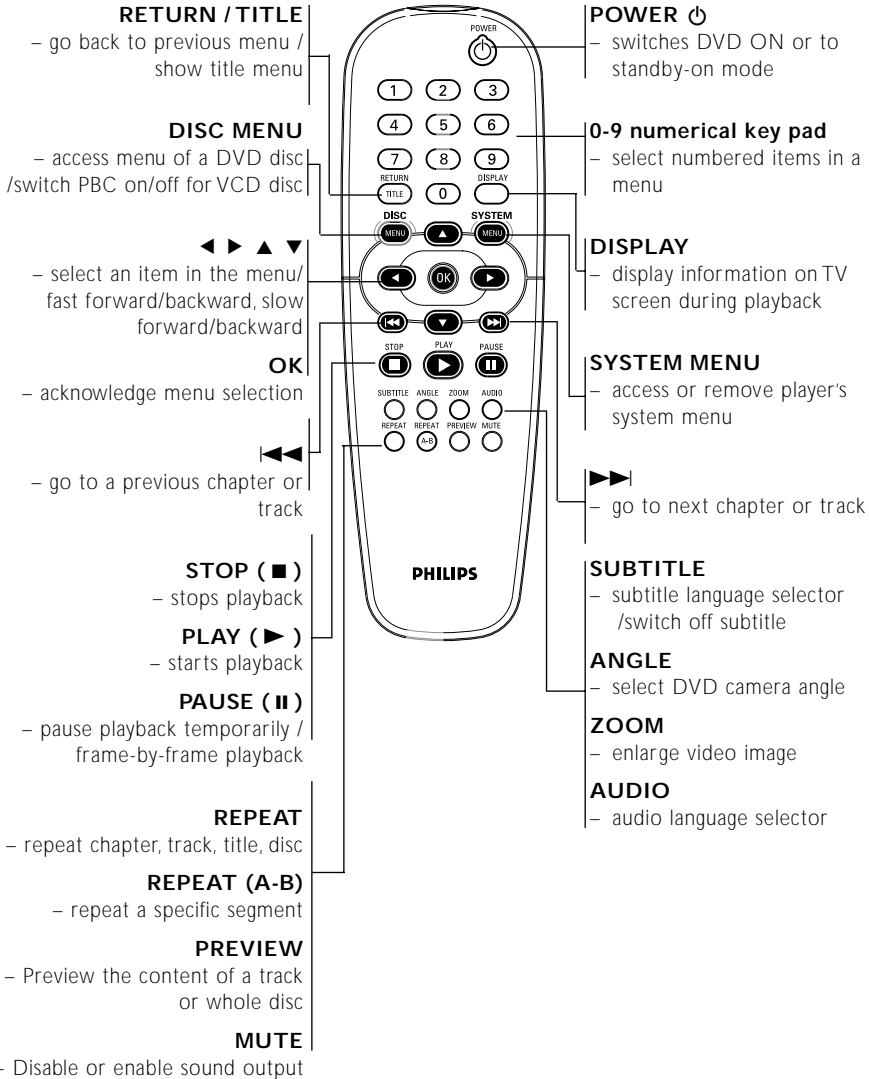
Front and Rear Panels



Caution: Do not touch the inner pins of the jacks on the rear panel. Electrostatic discharge may cause permanent damage to the unit.

Functional Overview

Remote Control



Note:

Press digit "1" for about 2 seconds to **OPEN** or **CLOSE** disc tray.



Preparation

Basic Connections

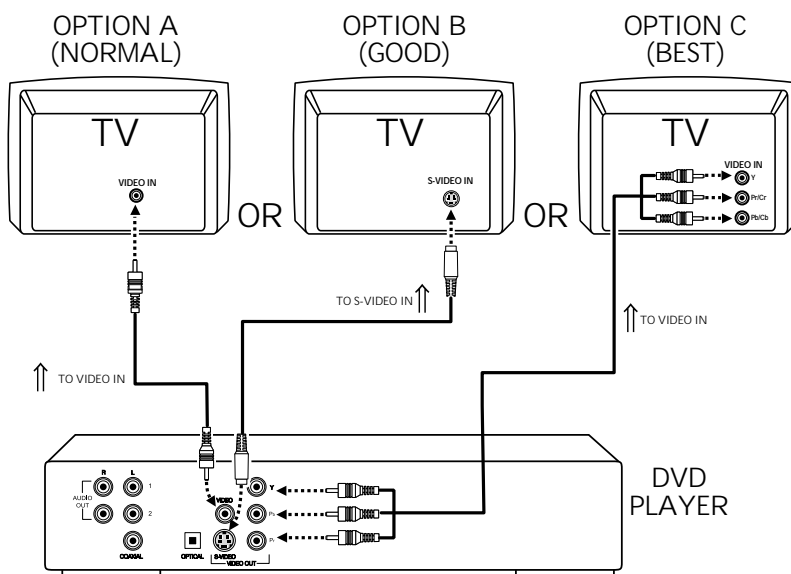
- Please refer to the instruction books of your TV, VCR, Stereo System or other devices as necessary to make the best connections.

- Make one of the following connections, depending on the capabilities of your existing equipment.

The following guidelines are options for the best picture and sound quality available on your DVD player.

English

Video Connections



Connecting to a TV

If your TV has a CVBS Video input connector,

- Connect the CVBS VIDEO OUT on the DVD player to the CVBS VIDEO IN (cable supplied).

If your TV has a S-Video input connector,

- Connect the S-Video OUT on the DVD player to the S-Video IN (not supplied).

If your TV has a Component video (Y/PB/PR) input connector,

- Connect the Y/PB/PR VIDEO OUT on the DVD player to the corresponding connector on the TV using the component video cable (not supplied).

Caution: Component video and S-video can not work at the same time, so you have to set one of them to be active by the such way as shown on the chapter [Video output].

Warning!

- Never make or change connections with the power switched on.
- Connect the DVD player directly to your TV, instead of eg. a VCR, to avoid distortion because DVD video discs are copy protected.
- Do not connect the DVD player AUDIO OUT to PHONO IN of your player.

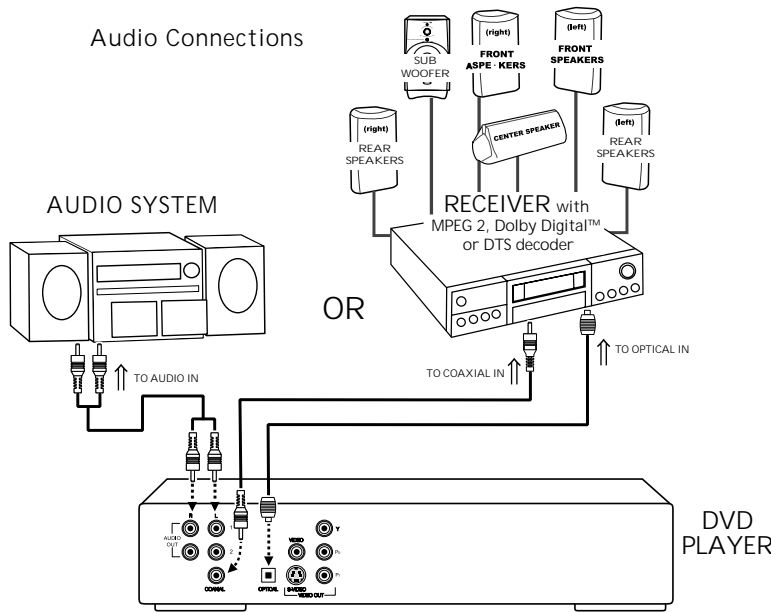
Preparation

Sound

- 1 Digital audio connections provide the clearest sound. Connect one of the DVD player's DIGITAL AUDIO OUT (COAXIAL or OPTICAL) to your amplifier or receiver.
- 2 If digital connections are not possible, connect the DVD player's red and white AUDIO OUT to your amplifier, receiver, stereo or TV.

Connecting to a Audio System

- 1 You can also listen to the sound of audio CDs and DVD video discs by connecting to an optional stereo systems.
- 2 Connect the Left and Right AUDIO OUT on the DVD player to the Left and Right AUDIO IN on the stereo systems.



Connecting to Optional Equipment

- A digital component with a built-in MPEG 2, Dolby Digital™ or DTS decoder allows you to enjoy the surround sound while producing the effect of being in a movie theater or a concert hall.

If your receiver has a Dolby Digital™, MPEG 2 or DTS decoder, Connect to A/V receiver with digital coaxial or optical cable

- Connect the DIGITAL COAXIAL AUDIO OUT of the DVD player to the corresponding input on the receiver using the normal audio or video cable supplied.

Notes:

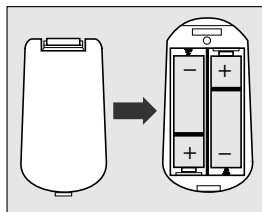
- If the audio format of the digital output does not match the capabilities of your receiver, the receiver will produce a strong, distorted sound or no sound at all.



Preparation

Inserting batteries into the Remote Control

- 1 Open the battery cover.
- 2 Insert batteries with the correct polarity as indicated by the **+** and **-** symbols inside the battery compartment.
- 3 Close the cover.



CAUTION!

- Remove batteries if they are exhausted or not to be used for a long time.
- Do not use old and new or different types of batteries in combination.
- Batteries contain chemical substances, so they should be disposed off properly and kept away from children.

Using the Remote Control

- Direct the remote control at the remote sensor of the DVD player.
- Do not drop or give the remote control a shock.
- Do not leave the remote control near extremely hot or humid place.
- Do not spill water or put anything wet on the remote control.

NTSC/PAL Conversion

This player is equipped with a NTSC/PAL conversion feature to convert the video output of the disc to match your TV system. The conversions supported are as below:

Disc Type	Format	Output format Selected mode		
		NTSC	PAL	AUTO
DVD	NTSC	NTSC	PAL	NTSC
	PAL	NTSC	PAL	PAL
VCD	NTSC	NTSC	PAL	NTSC
	PAL	NTSC	PAL	PAL

Notes:

- AUTO can only be selected when using a TV that has both the NTSC and PAL systems.
- Slight picture distortions may occur due to this conversion. This is normal. Thus, the AUTO format is most suitable for the best picture quality.

Switching On

- 1 Switch on the TV and DVD player.
- 2 Set the TV to the correct Video IN channel. (eg. EXT1, EXT2, AV1, AV2, AUDIO/VIDEO, etc. Please refer to your TV owner's manual for detail)
→ The player display lights and the default screen appears on the TV.
- 3 If you are using an external equipment (eg. audio system or receiver), turn them on and select the appropriate input source that was used to connect to the DVD player output. Refer to the equipment owner's manual for detail.

Note:

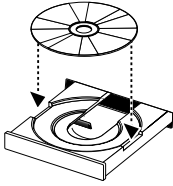
If TV set has Progressive Scan video input, Please connect the component video cables between DVD player and TV set for best video performance, then

- Press PROGRESSIVE SCAN on the front panel to select progressive scan mode.
- The DVD player will reboot when you switch between progressive scan and interlaced scan by pressing PROGRESSIVE SCAN key on the front panel.

Operation

Basic Playback

- 1 Press POWER ON/OFF on the front panel.
- 2 Press OPEN/CLOSE on the front panel to open disc loading tray.
- 3 Place the chosen disc in the tray, with the label facing up.
- 4 Press OPEN/CLOSE again to close the tray.
→ After recognizing this disc the player begin to playback automatically.



Notes:

- DVDs may have a region code. Your player will not play discs that have a region code different from the region code of your player.
- If 'Disc Lock' is set to LOCK and the disc inserted is not authorized, the 4-digit code must be entered and/or the disc must be authorized (see 'Disc Lock').

General operation

Video control during playback

STOP DVD VCD CD SVCD

- 1 You can resume the play from the point at which you stopped last time, if you just press the STOP key once. It will start from the beginning if you press the STOP key twice to stop playback.

PAUSE/STEP DVD VCD CD SVCD

- 1 To get a still picture, press PAUSE key during playback.
- 2 To step forward to the next frame picture, press PAUSE key again.
- 3 To resume normal playback, press PLAY.

SEARCH DVD VCD CD SVCD

- 1 To search the contents in fast speed, press the ► or ◀ for fast forward/backward searching.
- 2 Press the ◀ or ► again to increase the speed for searching.
- 3 Press PLAY to return to the normal playback.

Slow Motion

DVD

- 1 To get slow motion effect during playback, press ▲ or ▼.
- 2 Press ▲ or ▼ again, you can get different playback forward/backward speeds.
- 3 Press PLAY to return to the normal play back.

VCD CD SVCD

- 1 To get slow motion effect during playback, press ▲.
- 2 Press ▲ again, you can get different playback forward speeds.
- 3 Press the PLAY key to return to the normal play back.

NOTE:

- The SLOW BACKWARD function is not available for the Super VCD/VCD/CD disc.

Audio control during playback

MUTE DVD VCD CD SVCD

- 1 Press the MUTE key to disable the sound output.
- 2 Press the MUTE key again to remove the mute.

SURROUND SOUND

DVD VCD CD SVCD

The DVD player can reproduce virtual surround sound effect.

- 1 Press the Display key on the remote control.
- 2 Press ◀ ► to highlight option 3D
- 3 Press ▲ ▼ to switch it on or off.



Operation

Audio channel selection

VCD **CD** **SVCD**

- 1 SVCD has two stereo audio channels which are used for playing karaoke or the audio language selection. (for instance, you can choose one channel for only the music background of the song while you play the karaoke.)
- 2 Press the AUDIO key on the remote control to select the audio channels you want.
- 3 VCD has only one stereo audio channel, you can select mono left audio channel or mono right audio channel by pressing the AUDIO key on the remote control.

Repeat

DVD

Repeat chapter/title/disc

- To repeat the current chapter, press REPEAT.
- To repeat the current title, press REPEAT a second time.
- To exit Repeat mode, press REPEAT again.

VCD **CD**

Repeat track/disc

At the state of PBC OFF,

- To repeat the current track, press REPEAT.
- To repeat the entire disc, press REPEAT a second time.
- To exit Repeat mode, press REPEAT again.

Repeat A-B **DVD** **VCD** **CD**

DVD-Video Discs: repeat a sequence in a title

Video and Audio CDs: repeat a sequence in a track

- 1 Press REPEAT A-B at your chosen starting point.
- 2 Press REPEAT A-B again at your chosen end point.
→ The repeat sequence begins.
- 3 To exit the sequence, press REPEAT A-B.

5 Disc Resume

DVD **SVCD** **VCD** **CD**

This player can resume the playback of last 5 discs, which should be unload at stop mode.

- 1 Load one disc, which is one of last 5 discs.
- 2 Press PLAY when DVD player is recognizing the disc. If the information of this disc has been stored in the memory of DVD player, it will be played back from the point you stopped last time.

OSD (On-Screen Display)

DVD **VCD** **SVCD**

This function will provide some information about your playing disc on the screen.

- Press DISPLAY key on the remote control.

Title Selection

- 1 Press ◀ ▶ to highlight option Title number.
- 2 Press ▲ ▼ to change the title number.
→ DVD player will playback selected title.

Chapter Selection

- 1 Press ◀ ▶ to highlight option chapter number.
- 2 Press ▲ ▼ to change the chapter number.
→ DVD player will playback selected chapter.

Time Search

- Press ◀ ▶ to highlight time display area.
For DVD discs:

→ CC means the time has been played back of current chapter. CR means the time is remainder of current chapter. TC means the time has been played back of current title. TR means the time is remainder of current title.

For Super VCD or VCD disc:



→ DC means the time has been played back of the disc. DR means the time is remainder of the disc. TC means the time has been played back of current track. TR means the time is remainder of current track.

- Press the ◀ ▶ keys to highlight the item TIME and you can play from any point of the disc.
→ Enter hours, minutes and seconds from left to right in the time edit box using remote control numerical key pad. (e.g. 0:34:27)
→ Press the OK key to confirm it.

Operation

Zoom

The Zoom function allows you to enlarge the video image.

- 1 Press the ZOOM key to activate the function.
→ Use the   key to view the rest part of the zoomed picture.
→ Playback will continue.
- 2 Press the ZOOM key again to return to the original size.



NOTE: -This function is NOT available for PAL DVD discs or some DVD discs.

-This function is invalid in the Progressive Scan video output mode.

Special DVD Features





Playing a title

A DVD disc may have one or more titles. This depends on the content (a movie, video clips, a drama series, etc) on the disc.

- After you load a disc, information about the content shows on the screen waiting for your selection. Likewise, you can press the TITLE key on the remote control to turn back to the title menu during playback.
→ Press the appropriate numerical key or   keys on the remote control to highlight your selection.
→ Press the OK key to confirm it.

Playing a chapter

While you have selected a title, it may include one or more chapters.

- Any time you want to watch another chapter during playback, press DISC MENU key to turn back to the chapter menu (If disc has chapter menu).
→ Press the appropriate numerical key or   keys on the remote control to highlight your selection.
→ Press the OK key to confirm it.
→ After a chapter has been selected, you also can press the  or  key to make a change.

Camera Angle

Some discs contain scenes which have been shot simultaneously from various angles.

This DVD player allows you to select the desired camera angle.

- pressing the ANGLE key on your remote control.
NOTE: The function is available for the DVD discs which have recorded several angles movie.

Changing the audio language

- Press AUDIO repeatedly to select the different languages.

NOTE: The function is activated, only if the DVD is recorded with multi-languages audio tracks.

Subtitles

- Press SUBTITLE repeatedly to select the different subtitles.
- Press SUBTITLE for about 2 seconds to switch subtitle on or off.

NOTE: The function is activated, only if the DVD or SuperVCD is recorded with multi-subtitles.



Operation

English

Special VCD & SVCD Features Playback Control (PBC)

PBC function can make you enter the index menu which is used to select a track after loading the SVCD or VCD disc.

If you want to activate the function,

- 1 press the DISC MENU key on the remote control to set the PBC On.
→ Pay attention to the hint on the screen.
- 2 Use the ◀◀ or ▶▶ key to select the page you like.
→ If the items of the index menus are numbered, press the appropriate numerical key on the remote control.
→ press the OK key to confirm.
- 3 Press the RETURN key to enter the index menu during the play back.

NOTE:

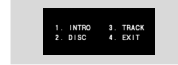
- The content of the index menu depends on the disc. Please refer to the disc's instruction for detail.
- If the disc doesn't include the PBC information, this function will have no effect.

If you want to skip the index menu and playback directly from the beginning,

- 1 press the DISC MENU key on the remote control to switch off the function.
→ For the karaoke discs, even if PBC function is off, you still can use the ◀◀ or ▶▶ key to select the track you like.

Preview function

At STOP mode, press the PREVIEW key to enter previewing menu.



1 Disc introduction

Select this function, DVD player will play back every track several seconds with full screen, that makes you understand the content of disc.

- Press the numerical key 1.
- Press OK key to confirm it.
- Press STOP key to quit previewing.

2 Disc preview

This function will minify the picture of one track enough to display every nine of these tracks on the full screen which will help you to preview a disc.

- Press the numerical key 2.
- Press OK key to confirm it.
- Select the other tracks beyond this page by pressing the ◀◀ or ▶▶ key.



- Press the numerical keys to choose the desired track.
- Press the OK key to confirm it.

3 Track preview

This function is used to divided a single track into nine parts and display them on the full screen which will help you to preview the selected track.

- Press the numerical key 3.
- Press the OK key to confirm it.
- Preview other tracks, press the ◀◀ or ▶▶ key.



- Press numerical key to choose the start point.
- Press the OK key to playback the start point.

4 Quit preview function

- Press the numerical key 4.
- Press the OK key to exit.

Picture CD & MP3 CD Playback

Function introduction

This player can playback JPEG format pictures and MP3 files as well as being specially compatible with Kodak Photo CD.

Picture CD containing JPEG format pictures with file extensions of 'JPG'. The CD can be burned on every computer, and pictures maybe from digital camera or scanner. If the customers prefer, they may make this CD become a Digital Album.

For playing this Digital Album (picture CD) conveniently, our DVD player can

- Auto playback of pictures on disc one at a time.
- Display a preferred picture.
- Zoom the picture.
- Rotate the picture.
- Flip the picture vertically or horizontally.
- Playback speed control.
- Album and track selection.
- Repeat (disc / album / track / picture).
- Nested directory levels supported to 8 levels.
- Maximum album numbers possible is 32.
- Maximum MP3 Tracks Programmable is 96.

Basic playback

- 1 Without any disc inserted and "NO DISC" is shown on set, press the SYSTEM MENU key to open the setup menu.
- 2 Press the ▲ ▼ key to highlight the PREFERENCES item.
- 3 Press OK to open the PREFERENCES menu.
- 4 Press the ▲ ▼ to highlight the SMART NAV menu.
- 5 Press the ► key to enter the menu.
- 6 Press the ▲ ▼ key to highlight the NO MENU or WITH MENU item.
 - NO MENU: playback all images in sequence automatically, and MP3 musics will be played prior to pictures.
 - WITH MENU: playback images in the selected folder.
- 7 Press the OK key to confirm your selection.

Special functions during playback:

Auto playback

After you open one picture, the player can playback each file in sequence automatically.

Selection playback

- 1 Press the numerical key to select your favourite file directly.
- 2 In the JPEG playback menu, press the ◀ ▶ ▲ ▼ key to select the folder you want and press the OK to open it.
- 3 Press the ◀ ▶ ▲ ▼ key to highlight your favourite file and press the OK key to confirm.

Preview function

- 1 Press the PREVIEW key at the STOP mode. You will see nine pieces of minified pictures on the screen.
- 2 Press the ►► or ◀◀ key to display the next or the previous nine-picture-preview.
- 3 Press the ◀ ▶ ▲ ▼ key to highlight one of them and press the OK to display.

Playback with multi-angles

When displaying one picture on TV screen

- Press the ▲ ▼ ◀ key to get different effects.
 - ▲ key: Flip the picture vertically.
 - ▼ key: Flip the picture horizontally.
 - ◀ key: rotate the picture anti-clockwise.

Playback Speed Control

- Press the ► key to adjust the playback speed.

Zoom picture

- Press the ZOOM key to display the picture with different scales.
- Press the ◀ ▶ ▲ ▼ key to view the rest of the zoomed picture.

Note:

If you want to switch between MP3 musics and pictures during automatical playback, please press a valid number as shown on the TV screen after the DVD player indexed the MP3 musics and pictures found in the loaded disc.

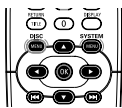


Setup Menu

English

Basic operations

- 1 Press SYSTEM MENU in the STOP mode to enter the Setup Menu.
- 2 Press the OK key to open the next level submenu or confirm your selection.
- 3 Press the ◀▶ keys to enter the submenu or return to the previous menu.
- 4 Press the ▲▼ keys to highlight the desired menu.
- 5 Press SYSTEM MENU to quit the setup menu.
→ When you quit the setup menu, the settings will be stored in the player's memory even if the player is switched to power off.



General setup menu

Some settings are needed in this menu, they are: DISC LOCK, PROGRAM, OSD LANGUAGE and SCREEN SAVER and VFD Dim.

Follow the steps below:

- 1 Press the SYSTEM MENU key to enter the setup menu.
- 2 Press the ▲▼ keys to choose the GENERAL SETUP menu.
- 3 Press the OK key to confirm selection.

Disc lock

When the disc is locked, the player will store its typical code into the memory for the future identification. For the next playback, the DVD player will prompt to enter the password.

- 1 Press the ▲▼ keys to highlight the DISC LOCK item in the GENERAL SETUP menu.
- 2 Enter its submenu by pressing the ▶ key.
 - LOCK: Lock the disc being played.
 - UNLOCK: unlock the disc.
- 3 Press the ◀ key to return to the GENERAL SETUP menu.



NOTE:

1. When playback a locked disc, the DVD player will prompt to enter your password or 3308 (default) password.
2. To change the password, refer to the option PASSWORD in the PREFERENCES menu.

Program (not available for DVD discs)

- 1 To choose the PROGRAM item, press the ▲▼ keys.
- 2 Press the ▶ key to move the cursor to the field of the submenu to choose the item ON.
→ ON: Enter the PROGRAM item.
- 3 Press OK to enter the program page.



Input your favorite track

- 1 Input valid track number by pressing the numerical keys.
- 2 Press the ◀▶▲▼ keys to move the cursor to the next selected position.
- 3 Repeat the steps above to input another track number until the whole program is completed.



Exclude a track

- 1 Press the ◀▶▲▼ keys to move the cursor to track you want to exclude.
- 2 Input an invalid track number to cancel this track.

Cancel all tracks

- 1 Press the ◀▶▲▼ keys to move the cursor to the CLEAR button.
- 2 Press OK, all tracks will be cancelled.
- 3 Now you can input your favorite tracks again.

Playback tracks

When programing is completed,

- 1 Press the ◀▶▲▼ keys to move the cursor to the PROG button.
- 2 Press OK.
→ DVD player will playback the selected program under the programmed sequence.

Stop the program playback

At the PROGRAM page, When programing is completed,

- 1 Press the ◀▶▲▼ keys to move the cursor to the QUIT button.
- 2 Press the OK key to quit this menu.

Setup Menu

OSD language

There are three options available for information display on TV screen.

- 1 Press the ▲▼ keys to highlight OSD LANG in the GENERAL SETUP menu.
- 2 Enter its submenu by pressing the ► key.
- 3 Move the cursor by pressing the ▲▼ keys to highlight the selected item.
- 4 Press the OK key to confirm.
- 5 Press the ◀ key to return to the GENERAL SETUP menu.



Screen saver

This function is used to turn on or off the screen saver.

- 1 Press the ▲▼ keys to highlight SCR SAVER in the GENERAL SETUP menu.
- 2 Enter its submenu by pressing the ► key.
- 3 Move the cursor by pressing the ▲▼ keys to highlight the selected item.
 - ON: At STOP mode, if nothing is happened within 5~6 minutes, screen saver will turn on.
 - OFF: Screen saver is disable.
- 4 Press OK to confirm.
- 5 Press the ◀ key to return to the GENERAL SETUP menu.



Speaker setup page

This menu contains setup options of your speaker system, such as DOWNMIX, D.R.C.(Dynamic Range Compression),

- 1 Press SYSTEM MENU.
- 2 Press the ▲▼ keys to highlight the SPEAKER SETUP item.
- 3 Press OK to confirm.

DOWNMIX mode

- 1 Press the ▲▼ keys to highlight the DOWNMIX item.
- 2 Enter its submenu by pressing the ► key.
- 3 Move the cursor by pressing the ▲▼ keys to highlight the selected item.
 - LT/RT
 - This item will be used only if your DVD player is connected with Dolby Prologic decoder. Meanwhile, the DVD player can send the output of Dolby Prologic signals.
 - STEREO
 - This item will help to downmix the signal of Dolby Digital into stereo signals directly outputting from L/R port.
- 4 Press OK.
- 5 Press the ◀ key and return to the SPEAKER SETUP menu.



D.R.C. (Dynamic Range Compression)

DVD player will compress dynamic range of sound effect output, when you do not want to disturb your neighbours and your family in midnight.

- 1 Press the ▲▼ keys to highlight D.R.C.,
- 2 Enter its submenu by pressing the ► key.
- 3 Move the cursor by pressing the ▲▼ keys to highlight the selected item.
 - ON: Enable D.R.C.
 - OFF: Disable D.R.C.
- 4 Press OK.
- 5 Press the ◀ key to return to the SPEAKER SETUP menu.





Setup Menu

English

SPDIF setup

In this menu, you can set up digital audio format outputting from coaxial and optical terminals.

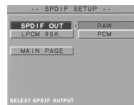
- 1 Press SYSTEM MENU to enter the SETUP menu.
- 2 Press the ▲▼ keys to choose the SPDIF SETUP menu.
- 3 Press OK.

NOTE:

SPDIF is the abbreviation of Sony Philips Digital Interface which is a protocol of digital data transferring.

SPDIF OUT setup

- 1 Press the ▲▼ keys to highlight the SPDIF OUT item.
- 2 Enter its submenu by pressing the ► key.
- 3 Press the ▲▼ keys to highlight the selected item.
→ RAW: Original digital signals output.
→ PCM: Convert to PCM signals to output.
- 4 Press OK.
- 5 Press the ◀ key and return to the SPDIF SETUP menu.



LPCM 96K mode

In this menu, you can set up sampling rate to decode LPCM audio.

- 1 Press the ▲▼ keys to highlight the LPCM 96K item.
- 2 Enter its submenu by pressing the ► key.
- 3 Move the cursor by pressing the ▲▼ keys to highlight the selected item.
→ ON: Detect the loading disc for appropriate sampling rate.
→ OFF: The decoding process is under the sampling rate of 48KHz.
- 4 Press OK.
- 5 Press the ◀ key to return to the SPDIF SETUP menu.



Video Out Setup

There are items included in VIDEO OUT PAGE menu as TV DISPLAY, VIDEO OUTPUT, TV TYPE, PICTURE SOURCE, PROGRESSIVE SCAN, BRIGHTNESS.

- 1 Press STOP twice.
- 2 Press SYSTEM MENU to enter its menu.
- 3 Highlight the SETUP VIDEO OUTPUT item by pressing the ▲▼ keys.
- 4 Press OK.

Video output

In this menu, you can setup the video output for high quality video performance.

- 1 Press the ▲▼ keys to highlight VIDEO OUTPUT in the VIDEO OUTPUT PAGE menu.
- 2 Press the ► key to highlight the item of the submenu.
- 3 Press the ▲▼ keys to choose an item.
→ S-VIDEO: Video signals will send an output from the S-VIDEO on the rear panel of the DVD player.
→ YPBPR: If your TV set is equipped with Y/PB/PR input, you can choose for high quality picture.
- 4 Press OK.
- 5 Press the ◀ key to return to the VIDEO OUTPUT PAGE menu.



NOTE: Any selection will not influence the signal output of composite video.

Setup Menu

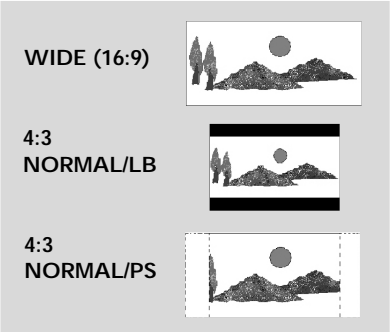
TV display

Select the aspect ratio of the TV to be connected.

16:9 → when you connect a wide-screen TV to the DVD player.

4:3 NORMAL/LB → when you connect a normal TV to the DVD player. Displays a wide picture with bands displayed on the upper and lower portions of the TV screen.

4:3 NORMAL/PS → when you connect a normal TV to the DVD player. Displays the wide picture on the whole TV screen with a portion automatically cut off.



Setup the item as follows,

- 1 Press the ▲▼ keys to highlight the TV DISPLAY item in the VIDEO OUTPUT PAGE menu.
- 2 Enter its submenu by pressing the ► key.
- 3 Move the cursor by pressing the ▲▼ keys to highlight the selected item.
- 4 Press OK.
- 5 Press the ◀ key to return to the VIDEO OUTPUT PAGE menu.



TV type

Before viewing the DVD or VCD, ensure that the PAL or NTSC setting of the system matches your TV set.

- 1 Press the ▲▼ keys to highlight TV TYPE in the VIDEO OUTPUT PAGE menu.
- 2 Enter its submenu by pressing the ► key.
- 3 Move the cursor by pressing the ▲▼ keys to highlight the requisite item.
- 4 Press OK.
- 5 Press the ◀ key to return to the VIDEO OUTPUT PAGE menu.

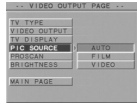


NOTE: Choosing NTSC item indicates that the player will output by NTSC system. Similarly, you can acquire PAL system by choosing the PAL item. And the item MULTI means video output is depending on the format of DVD or VCD discs.

Picture Source

For some DVD discs, DVD player may not recognize properly if the disc type is progressive or not, you'd better to select the correct disc type manually for best video performance.

- 1 Press the ▲▼ keys to highlight the PIC SOURCE item in the VIDEO OUTPUT PAGE menu.
- 2 Enter its submenu by pressing the ► key.
- 3 Move the cursor by pressing the ▲▼ keys to highlight the selected item.
 - AUTO: playback the disc automatically
 - FILM: the DVD disc is progressive
 - VIDEO: the DVD disc is interlaced
- 4 Press OK.
- 5 Press the ◀ key to return to the VIDEO OUTPUT PAGE menu.





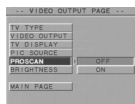
Setup Menu

English

Progressive Scan

This menu indicates the video output status whether it is progressive scan or not.

- 1 Press the ▲▼ keys to highlight the PROSCAN item in the VIDEO OUTPUT PAGE menu.
- 2 Press OK.

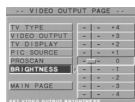


To select the progressive scan mode to output video signals for best video performance, first, be sure you have connected the component video cables between DVD player and TV set.

- Press PROGRESSIVE SCAN on the front panel to select progressive scan mode or not.

Brightness

- 1 Press the ▲▼ keys to highlight BRIGHTNESS in the VIDEO OUTPUT PAGE menu.
- 2 Press the ► key to highlight the item of the submenu.
- 3 Press the ▲▼ keys to adjust the brightness level.
- 4 Press OK.
- 5 Press the ◀ key to return to the VIDEO OUTPUT PAGE menu.



Preferences setup

There are items included in PREFERENCES menu as AUDIO, SUBTITLE, DISC MENU, PARENTAL, PASSWORD, DEFAULT and SMART NAV.

- 1 Press the STOP key twice.
- 2 Press SYSTEM MENU to enter its menu.
- 3 Highlight the PREFERENCES item by pressing the ▲▼ keys.
- 4 Press OK to confirm your selection.

Audio language

DVD discs are available for multiple audio languages. Use this item to choose your preferred default audio language.

- 1 Press the ▲▼ keys to highlight the AUDIO item.
- 2 Enter its submenu by pressing the ► key.
- 3 Move the cursor by pressing the ▲▼ keys to highlight the selected item.
- 4 Press OK.
- 5 Press the ◀ key to return to the PREFERENCES menu.

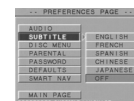


NOTE: Your DVD disc may not include the audio language which you set in the SETUP menu. If so, the player will use other audio language instead.

Subtitle language

DVD discs are available for multi-subtitle language. This item is used to choose default subtitle language.

- 1 Press the ▲▼ keys to highlight the SUBTITLE item.
- 2 Enter its submenu by pressing the ► key.
- 3 Move the cursor by pressing the ▲▼ keys to highlight the selected item.
- 4 Press OK.
- 5 Press the ◀ key to return to the PREFERENCES menu.



NOTE: Your DVD disc may not include the subtitle which you set in the SETUP menu. If so, the player will use other audio language and subtitle instead.

Setup Menu

Disc menu language

DVD discs are available for multiple disc menu languages. This item is used to choose default disc menu language.

- 1 Press the ▲▼ keys to highlight the DISC MENU item.
- 2 Enter its submenu by pressing the ► key.
- 3 Move the cursor by pressing the ▲▼ keys to highlight the selected item.
- 4 Press OK.
- 5 Press the ◀ key to return to the PREFERENCES menu.

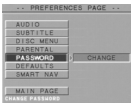


NOTE: If your DVD disc doesn't include disc menu language you have set, the player will use other recorded language instead.

Password

This password is used for the parental control and disc lock. Enter your password when you are required by the DVD player.

- 1 Press the ▲▼ keys to highlight the PASSWORD item.



- 2 Enter its submenu by pressing the ► key.
 - 3 Move the cursor by pressing the ▲▼ keys to highlight the selected item, then press OK.
 - 4 Enter the current 4 digit code.
 - 5 If successful, the player will prompt for a new one.
 - 6 After that, enter the new password again to reconfirm.
 - 7 Press the PLAY key to return to the PREFERENCES menu.
- The new 4 digit code will take effect.

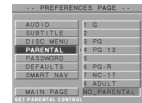
NOTE:
1. You can change the setup of parental control and disc lock with a recognise password being entered.
2. If you forget the password, you can enter the default password 3308 and replace your password after logging on.

Parental Control DVD

Movies on DVDs may contain scenes not suitable for children. Therefore, discs may contain 'Parental Control' information which applies to the complete disc or to certain scenes on the disc. These scenes are rated from 1 to 8, and alternative, more suitable scenes are available on the disc. Ratings are country dependent. The 'Parental Control' feature allows you to prevent discs from being played by your children or to have certain discs played with alternative scenes.

- VCD, SVCD, CD has no level definition, so parental control function has no effect on those kinds of discs as well as most of illegal DVD discs.
- You can follow the steps below to setup the parental control:

- 1 Press the ▲▼ keys to highlight the PARENTAL item.
- 2 Move to its submenu by pressing the ► key.
- 3 Then use the ▲▼ keys to highlight a rating from 1 to 8 for the disc inserted.
- 4 Press OK to confirm, then press the ◀ key to return to the PREFERENCES menu.



No Parental Control

Parental Control is not activated. The Disc will be played in full.

- 1 Select NO PARENTAL item.
- 2 Press OK.

Ratings 1 to 8:

The disc contains scenes not suitable for children. If you set a rating for the player, all scenes with the same rating or lower will be played. Higher rated scenes will not be played unless an alternative which has the same rating or lower is available on the disc. If no suitable alternative is found, playback will stop and the 4-digit code has to be entered.



Setup Menu

English

Default setup

If some problems occur during setting DVD, the item DEFAULT is used to reset all items to factory default and all your personal setting will be erased.

- 1 Press the ▲▼ keys to highlight the DEFAULT item.
- 2 Enter its menu by pressing the ► key.
- 3 Press OK.

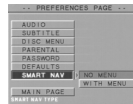


NOTE: When this function is executed, all setups will be reset to factory defaults.

Smart Navigator

In this menu, it contains of the setting when you playback picture CD and MP3 CD.

- 1 Press the ▲ ▼ to highlight the SMART NAV menu.
- 2 Press ► to enter the menu.
- 3 Press ▲ ▼ to highlight the NO MENU or WITH MENU item.
 - NO MENU: playback all images or MP3 musics in sequence automatically
 - WITH MENU: playback images or MP3 musics in the selected folder.
- 4 Press the OK key to confirm your selection



Specifications

PLAYBACK SYSTEM

DVD Video
Video CD & SVCD
CD
PICTURE CD
MP3-CD
CD-R, CD-RW

VIDEO PERFORMANCE

* CVBS 1Vpp --- 75Ω
* S-VIDEO Y: 1.00Vpp --- 75Ω
C: 0.30Vpp --- 75Ω
* Component video Y: 1.00Vpp --- 75Ω
PB: 0.7Vpp --- 75Ω
PR: 0.7Vpp --- 75Ω

AUDIO FORMAT

Digital	Mpeg/ AC-3/ DTS PCM	compressed Digital 16, 20, 24 bits fs, 44.1, 48, 96 kHz
	MP3(ISO 9660)	24, 32, 56, 64, 96, 128, 256 kbps & variable bit rate fs, 16, 22.05, 24, 32, 44.1, 48 kHz

Analog Sound Stereo
Full decoding of Dolby Digital multichannel surround sound

AUDIO PERFORMANCE

DA Converter	24bit
Signal-Noise (1kHz)	90dB
Dynamic range(1kHz)	>80dB
DVD	fs 96 kHz 4Hz- 44kHz fs 48 kHz 4Hz- 22kHz
SVCD	fs 48 kHz 4Hz- 22 KHz fs 44.1kHz 4Hz- 20kHz
CD/VCD	fs 44.1kHz 4Hz- 20kHz

TV STANDARD (PAL/50Hz) (NTSC/60Hz)

Number of lines	625	525
Playback	Multistandard	(PAL/NTSC)

CONNECTIONS

Component Video Output	Cinch
S-Video Output	Mini DIN 4-pins
Video Output	Cinch
Audio Output	Cinch
Digital Output	1 coaxial / optical IEC958 for CDDA / LPCM/ MPEG1 IEC1937 for MPEG 2, Dolby Digital and DTS

CABINET

Dimensions (w x d x h)	435 x 286 x 75 mm
Weight	Approximately 3.8 Kg

Specifications subject to change without prior notice

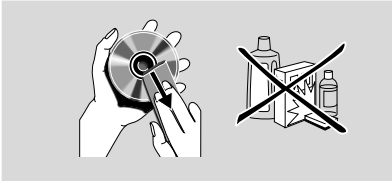
Maintenance

Cleaning the Cabinet

- Use a soft cloth slightly moistened with a mild detergent solution. Do not use a solution containing alcohol, spirits, ammonia or abrasives.

Cleaning Discs

- When a disc becomes dirty, clean it with a cleaning cloth. Wipe the disc from the center out. Do not wipe in a circular motion.
- Do not use solvents such as benzine, thinner, commercially available cleaners, or antistatic spray intended for analog records.





Troubleshooting

WARNING

Under no circumstances should you try to repair the system yourself, as this will invalidate the warranty. Do not open the system as there is a risk of electric shock.

If a fault occurs, first check the points listed below before taking the system for repair. If you are unable to remedy a problem by following these hints, consult your dealer or service center.

Problem	Solution
No power	<ul style="list-style-type: none">– Check if the AC power cord is properly connected.
No picture	<ul style="list-style-type: none">– Check if the TV is switched on.– Check the video connection.
Distorted picture	<ul style="list-style-type: none">– The disc is badly scratched or dirty.– Sometimes a small amount of picture distortion may appear. This is not a malfunction.
Completely distorted picture or black/white picture with DVD or Video CD	<ul style="list-style-type: none">– Make sure the NTSC/PAL setting at the DVD player matches the video signal of your television. (See NTSC/PAL Conversion)
No sound or distorted sound	<ul style="list-style-type: none">– Adjust the volume.– Check that the speakers are connected correctly.
No audio at digital output	<ul style="list-style-type: none">– Check the digital connections.– Check the settings menu to make sure the digital output is set to ALL or PCM.– Check if the audio format of the selected audio language matches your receiver capabilities.
Disc can't be played	<ul style="list-style-type: none">– Ensure the disc label is facing up.– Check if the disc is defective by trying another disc.
No return to start-up screen when disc is removed	<ul style="list-style-type: none">– Reset the unit by switching the player off, then on again.
The player does not respond to the remote control	<ul style="list-style-type: none">– Aim the remote control directly at the sensor on the front of the player.– Reduce the distance to the player.– Replace the batteries in the remote control.– Insert the batteries with their polarities (+/- signs) as indicated.
Buttons do not work	<ul style="list-style-type: none">– In order to completely reset the player, unplug the AC cord from the AC outlet.
Player does not respond to some operating commands during playback.	<ul style="list-style-type: none">– Operations may not be permitted by the disc. Refer to the instructions of the disc.
DVD Video player cannot read CDs/DVDs	<ul style="list-style-type: none">– Use a commonly available cleaning CD/DVD to clean the lens before sending the DVD Video player for repair.