

SERVICE MANUAL

SOUND CONSOLETTTE

SANSUI AX-3B
AX-3S



SPECIFICATIONS

Output voltage

SOURCE OUT . . . 150 mV

TAPE REC 150 mV

Total harmonic distortion

MIC less than 0.1 %

Input sensitivity and impedance

MIC 1 mV/10 kilohms

SOURCE IN 150 mV/47 kilohms

Frequency response

MIC 70 to 15,000 Hz

SOURCE IN 20 to 20,000 Hz

Hum and noise (short-circuit, A-network)

MIC 56 dB

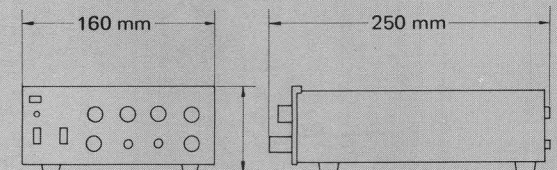
Power supply voltage . 110 to 120 V/220 to 240 V
(with the power supply voltage selector switch).

Power supply frequency

. 50/60 Hz

Power consumption . . 2 W

Dimensions 160 mm (6-5/16") W
71 mm (2-13/16") H
250 mm (9-7/8") D



Weight 1.4 kg (3.1 lbs.) net
1.8 kg (4.0 lbs.) packed

*Design and specifications subject to changes without notice for improvements.

*In order to simplify the explanation illustrations may sometimes differ from the originals.

Sansui

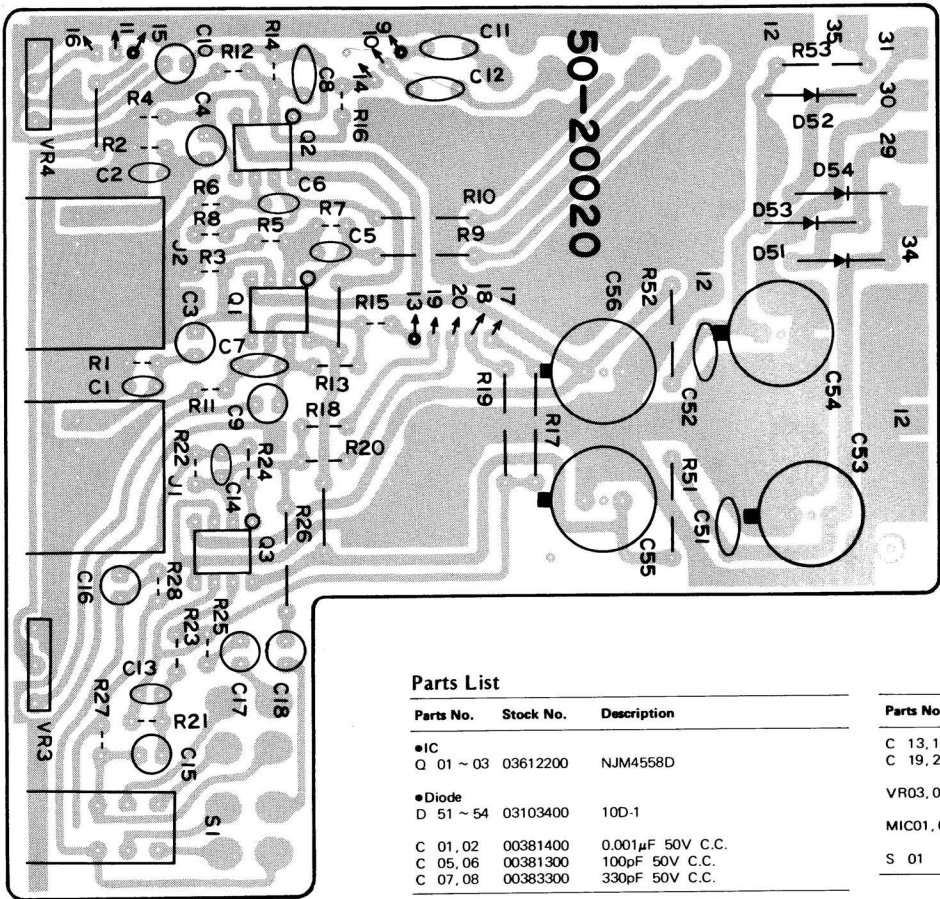
SANSUI ELECTRIC CO., LTD.

1. PARTS LOCATION & PARTS LIST

1-1. 50-20020 Amplifier Circuit Board (Stock No. 0711450)

•Since some of capacitors and resistors are omitted from parts lists in this Service Manual, refer to the Common Parts List for capacitors & resistors which was appended previously to each Sansui Manual.

•As the stock number in the parts list on this service manual is indicated in 8 digit to differ from ordinary 7 digit, please be careful when ordering parts.



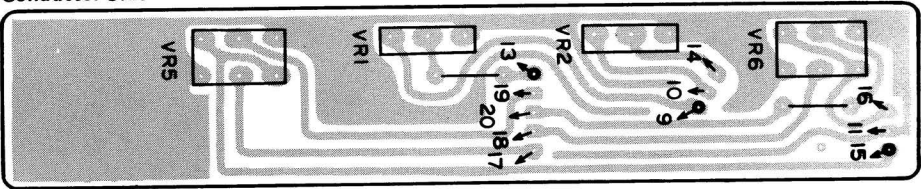
Parts List

Parts No.	Stock No.	Description	Parts No.	Stock No.	Description
•IC			C 13, 14	00384100	5pF 50V C.C.
Q 01 ~ 03	03612200	NJM4558D	C 19, 20	00381400	0.001μF 50V C.C.
•Diode			VR03, 04	10054100	5kΩ B, MIC Level Volume
D 51 ~ 54	03103400	10D-1	MIC01, 02	24305800	MIC Jack
C 01, 02	00381400	0.001μF 50V C.C.	S 01	07113800	Tape Switch
C 05, 06	00381300	100pF 50V C.C.			
C 07, 08	00383300	330pF 50V C.C.			

•Volume circuit board, output terminal circuit board are not supplied as the assembled, the individual parts on the circuit boards, however are provided for orders.

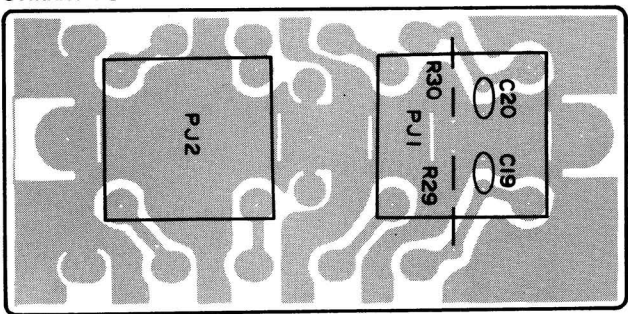
1-2. Volume Circuit Board

Conductor Side



1-3. Output Terminal Circuit Board

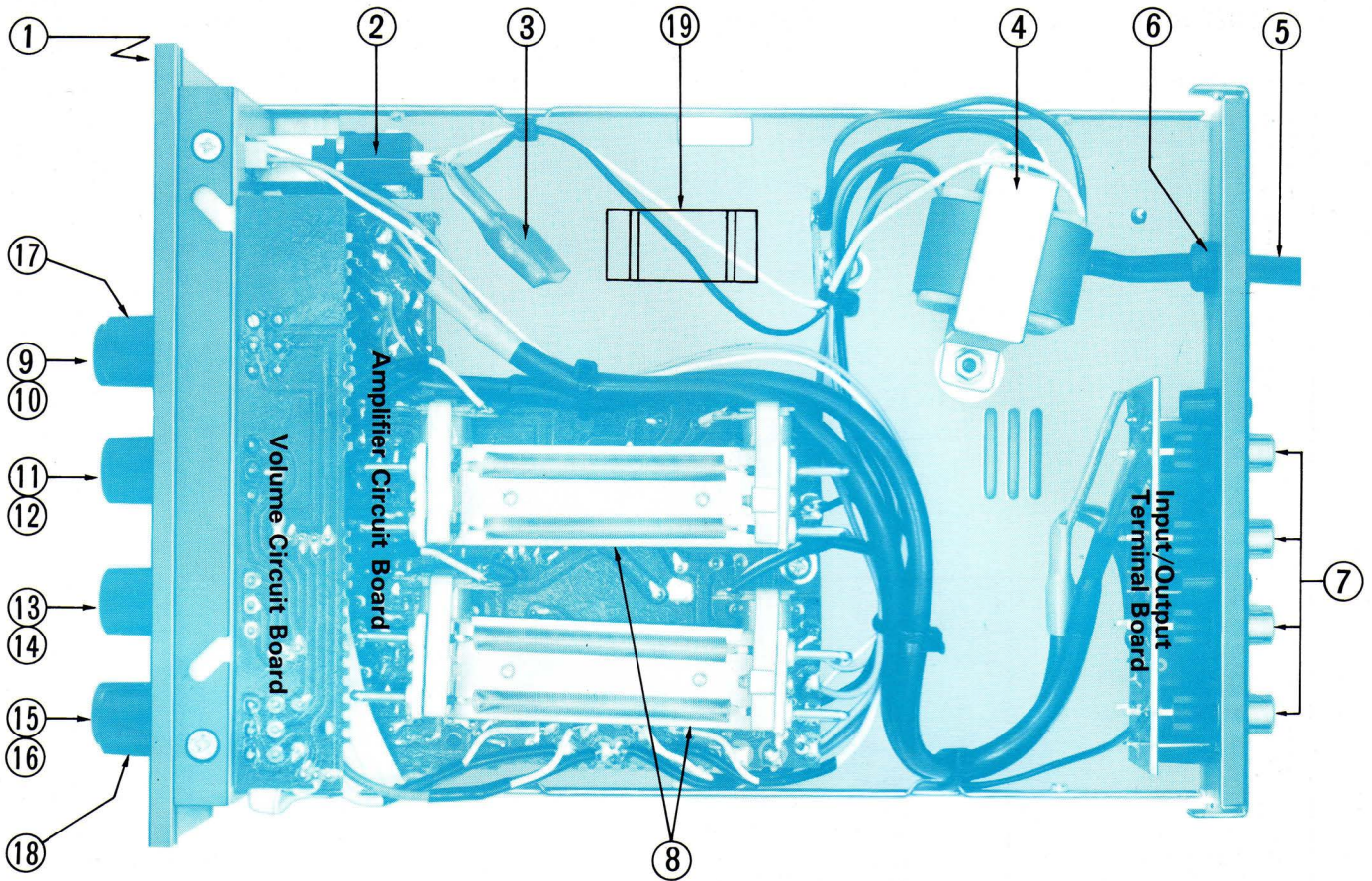
Conductor Side



•Abbreviations

- E.C. : Electrolytic Capacitor
- BP.E.C. : Bi-Polar Electrolytic Capacitor
- C.C. : Ceramic Capacitor
- Mi.C. : Mica Capacitor
- O.C. : Oil Capacitor
- P.C. : Polystyrene Capacitor
- T.C. : Tantalum Capacitor
- C.R. : Carbon Resistor
- S.R. : Solid Resistor
- Ce.R. : Cement Resistor
- M.R. : Metal Film Resistor
- F.R. : Fusing Resistor
- N.I.R. : Non-Inflammable Resistor
- M.C. : Mylar Capacitor

2. OTHER PART



Parts List

Parts No.	Stock No.	Description
1	07114400	Front Panel Ass'y B
	07114300	Front Panel Ass'y S
	53967700	Knob Guide B
	53967800	Knob Guide S
	03191200	LED, power indicator
2	07113700	Power Switch
3	00386200	0.002μF C.C.
4	40031500	Power Transformer
5	38004700	Power Cord
6	39108300	Strain Relief, power cord
7	22006900	4P Input Output Terminal

Parts No.	Stock No.	Description
8	07113900	Reverberation Unit
9(VR5)	07115000	Panpot Volume 20kΩ MN 1-CH
	07113500	Knob, panpot volume . . . B
10	07114200	Knob, panpot volume . . . S
11(VR1)	10054200	Echo Volume 20kΩ B, 1-CH
	07113500	Knob, echo volume . . . B
12	07114200	Knob, echo volume . . . S
13(VR2)	10054200	Echo Volume 20kΩ B, 2-CH
	07113500	Knob, echo volume . . . B
14	07114200	Knob, echo volume . . . S
15(VR6)	07115000	Panpot Volume 20kΩ MN, 2-CH

Parts No.	Stock No.	Description
16	07113500	Knob, panpot volume . . . B
	07114200	Knob, panpot volume . . . S
	07113600	Knob, level volume, 1-CH . B
17	07114100	Knob, level volume, 1-CH . S
	07113600	Knob, level volume, 2-CH . B
18	08114100	Knob, level volume, 2-CH . S
19(S102)	07113000	Power Voltage Selector Switch
	53194800	Knob, power & tape switch . . B
	53194900	Knob, power & tape switch . . S
	50070100	Bonnet
	55173400	Leg, bottom plate

3. PACKING LIST

Stock No.	Description
38102800	Pin Plug Cord x 2
00592000	Cord Clump Holder (Screw x 8)
52967800	Retainer, unit x 2
07175800	Operating Instructions

4. ACCESSORY PARTS LIST

Stock No.	Description
07175600	Carton Case Ass'y B
07175700	Carton Case Ass'y S
91168600	Vinyl Cover

●Note: Since there are AX-3B(Black model) & AX-3S(Silver model) in the parts list above, please pay attention when ordering parts.
 Parts marked (B) in parts list for AX-3B only
 Parts marked (S) in parts list for AX-3S only

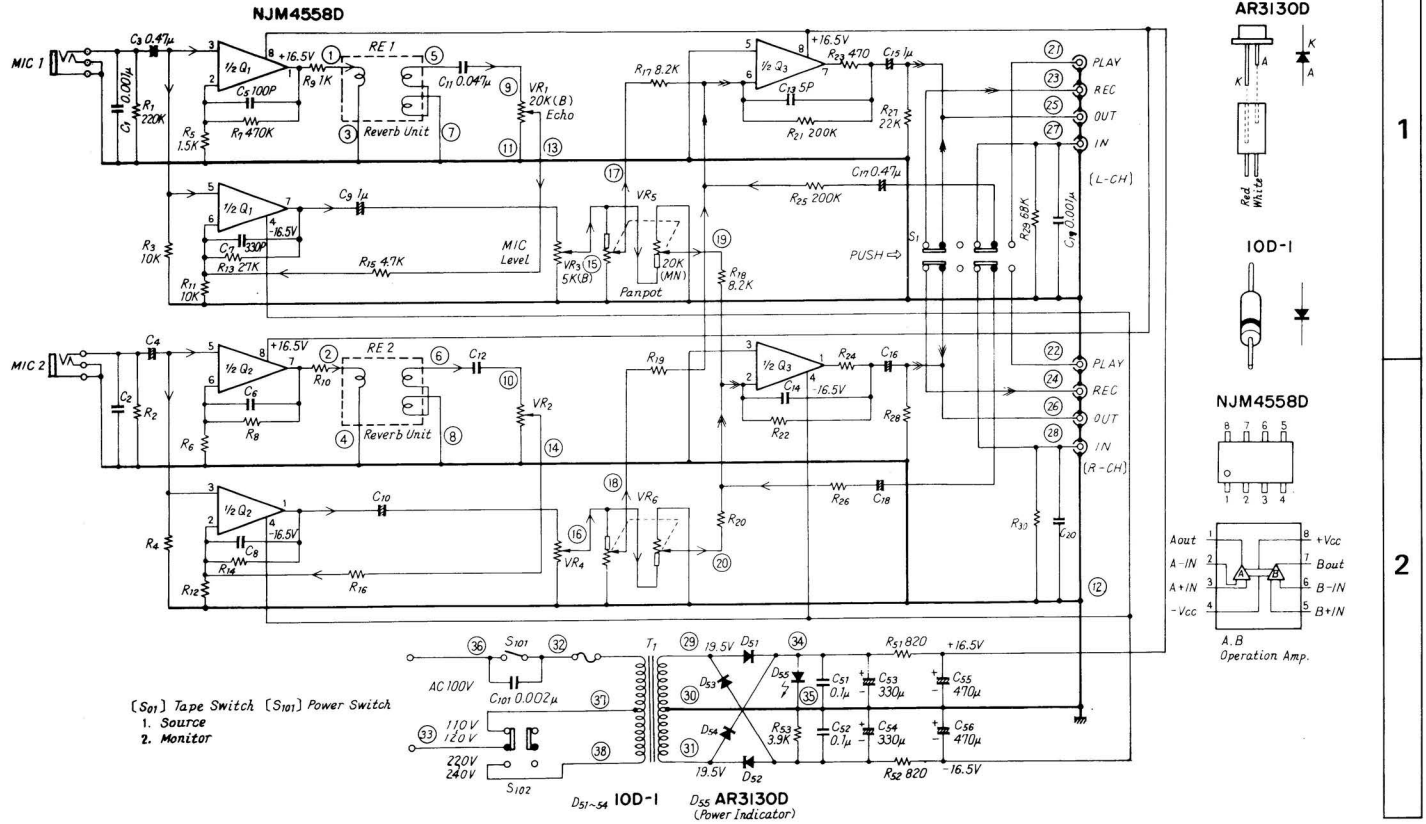
A

B

C

5. SCHEMATIC DIAGRAM

- Design and specifications subject to change without notice for improvement.
- La présentation et les spécifications sont susceptibles d'être modifiées sans préavis par suites d'améliorations éventuelles.
- Änderungen, die dem technischen Fortschritt dienen, bleiben vorbehalten.



MEMO

SANSUI ELECTRONICS CORPORATION: 1250 Valley Brook Ave. Lyndhurst, N.J. 07071 U.S.A.
333 West Alondra Blvd. Gardena, California 90247 U.S.A.
3036 Koapaka St. Honolulu, Hawaii 96819 U.S.A.

Sansui

SANSUI AUDIO EUROPE N.V.:
SNASUI AUDIO EUROPE S.A.:

North Trade Bldg (9th floor) Noorderlaan 133-Bus 1, 2030 Antwerp, Belgium
Arabella center, 6 Frankfurt AM Main, Lyoner Strasse 44-48, West Germany

SANSUI ELECTRIC COMPANY LTD.: 14-1, Izumi 2-chome, Suginamiku, Tokyo 168 Japan PHONE: (03) 323-1111/TELEX: 232-2076

(SM150)

Printed in Japan(896610M)