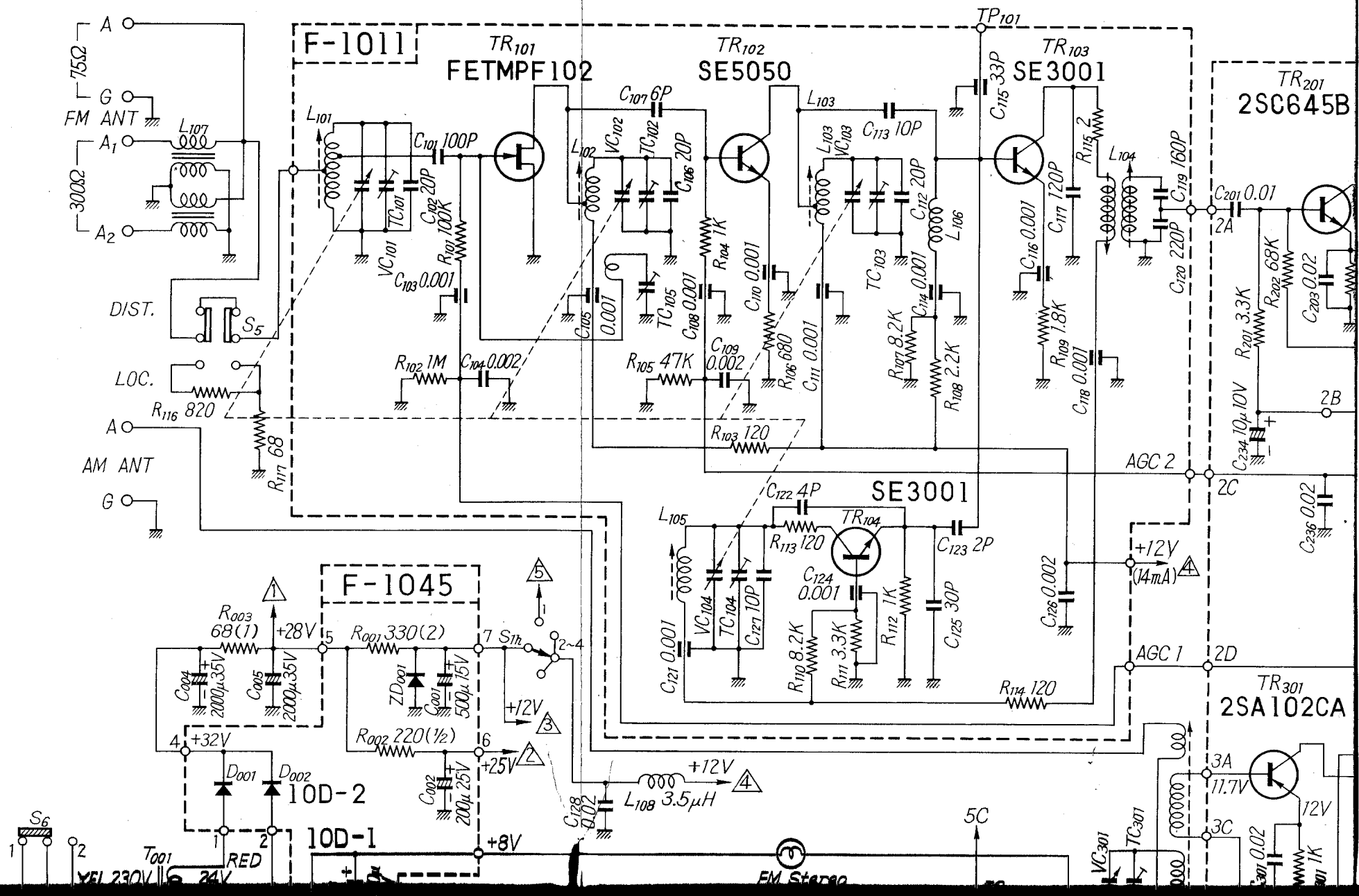
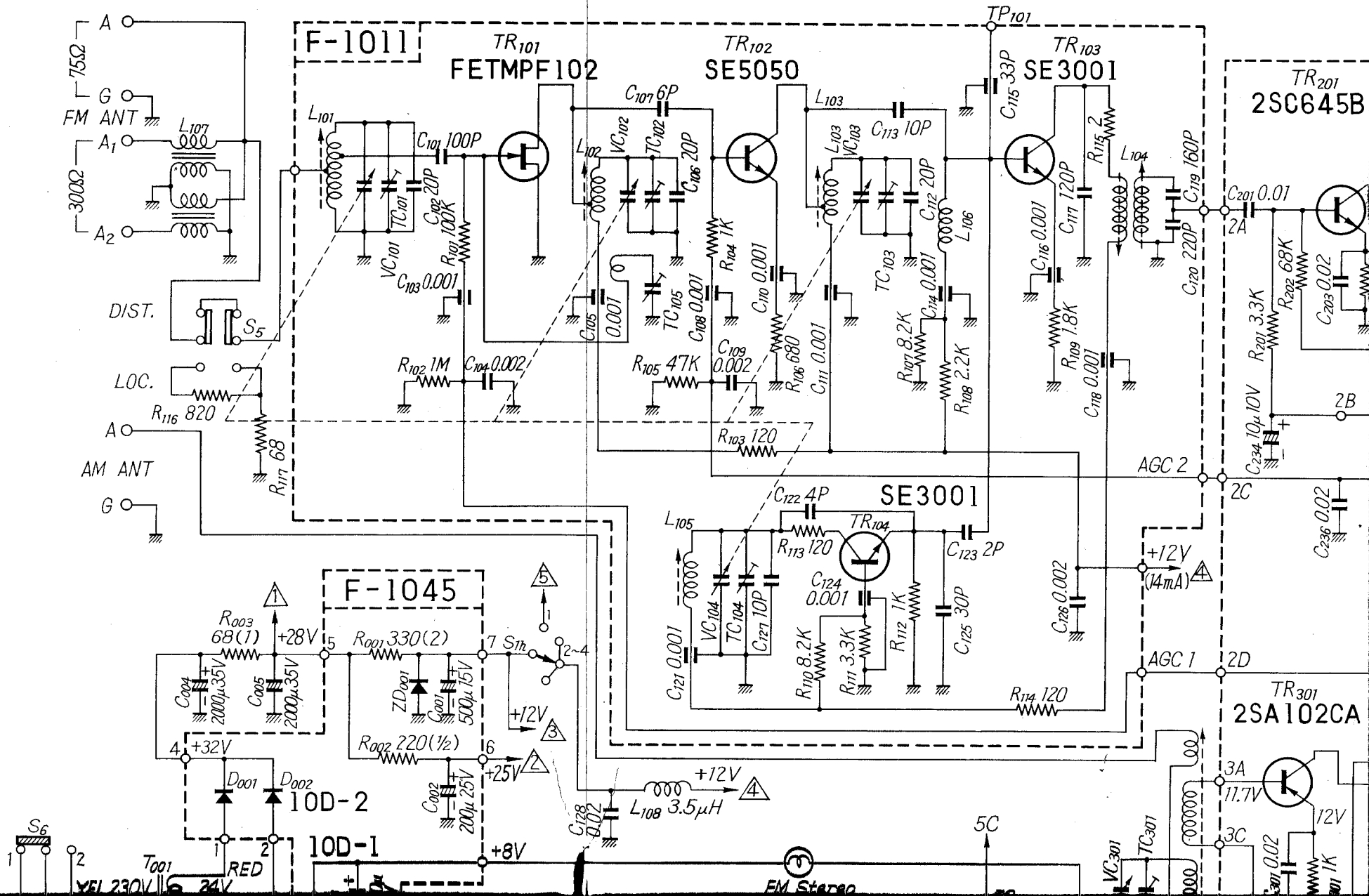


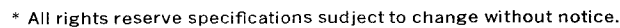
1. The first step in the process of identifying a problem is to recognize that a problem exists. This involves gathering information about the situation and identifying the specific issue that needs to be addressed.

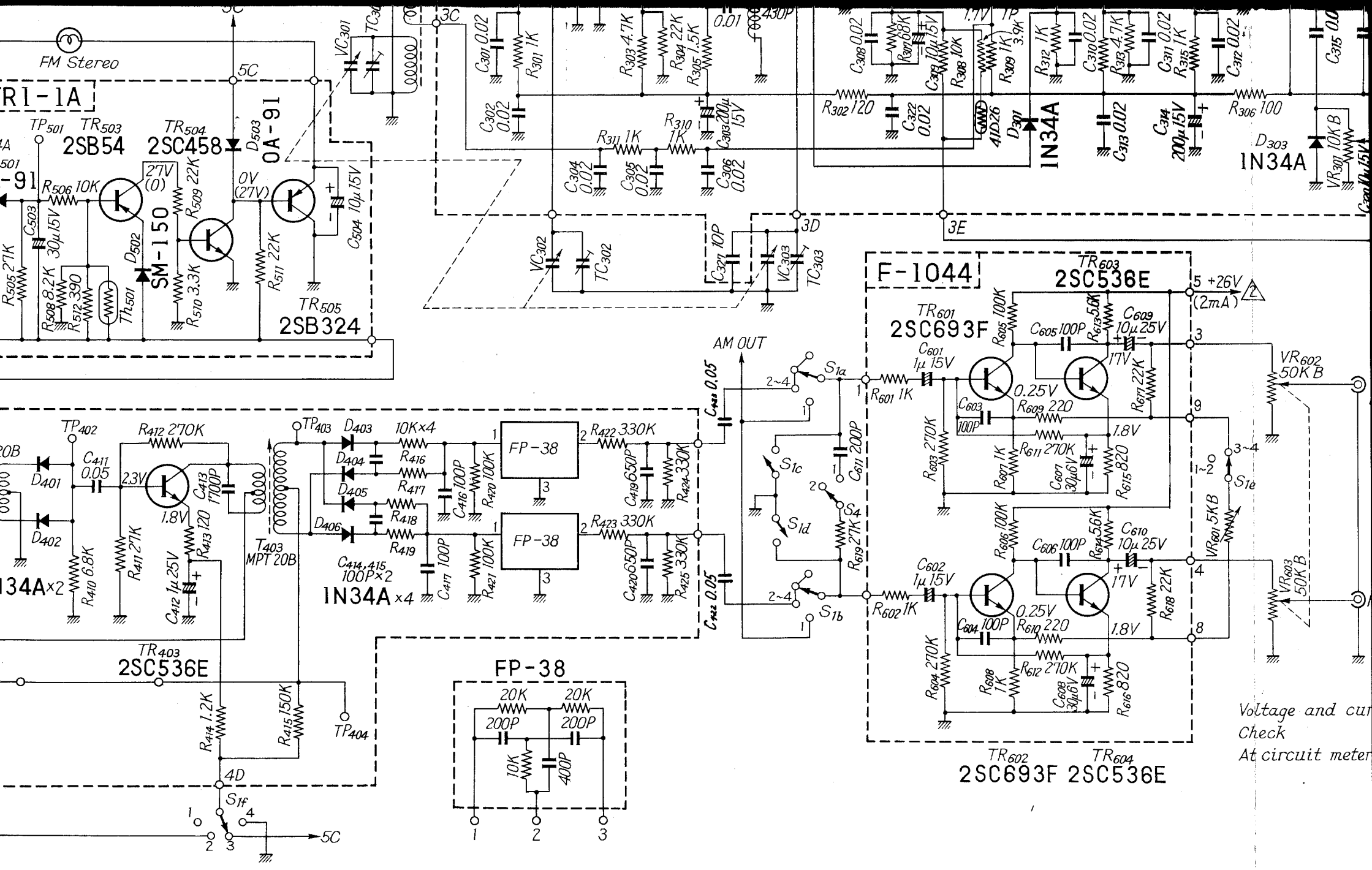


SANSUI TU-777 SCH

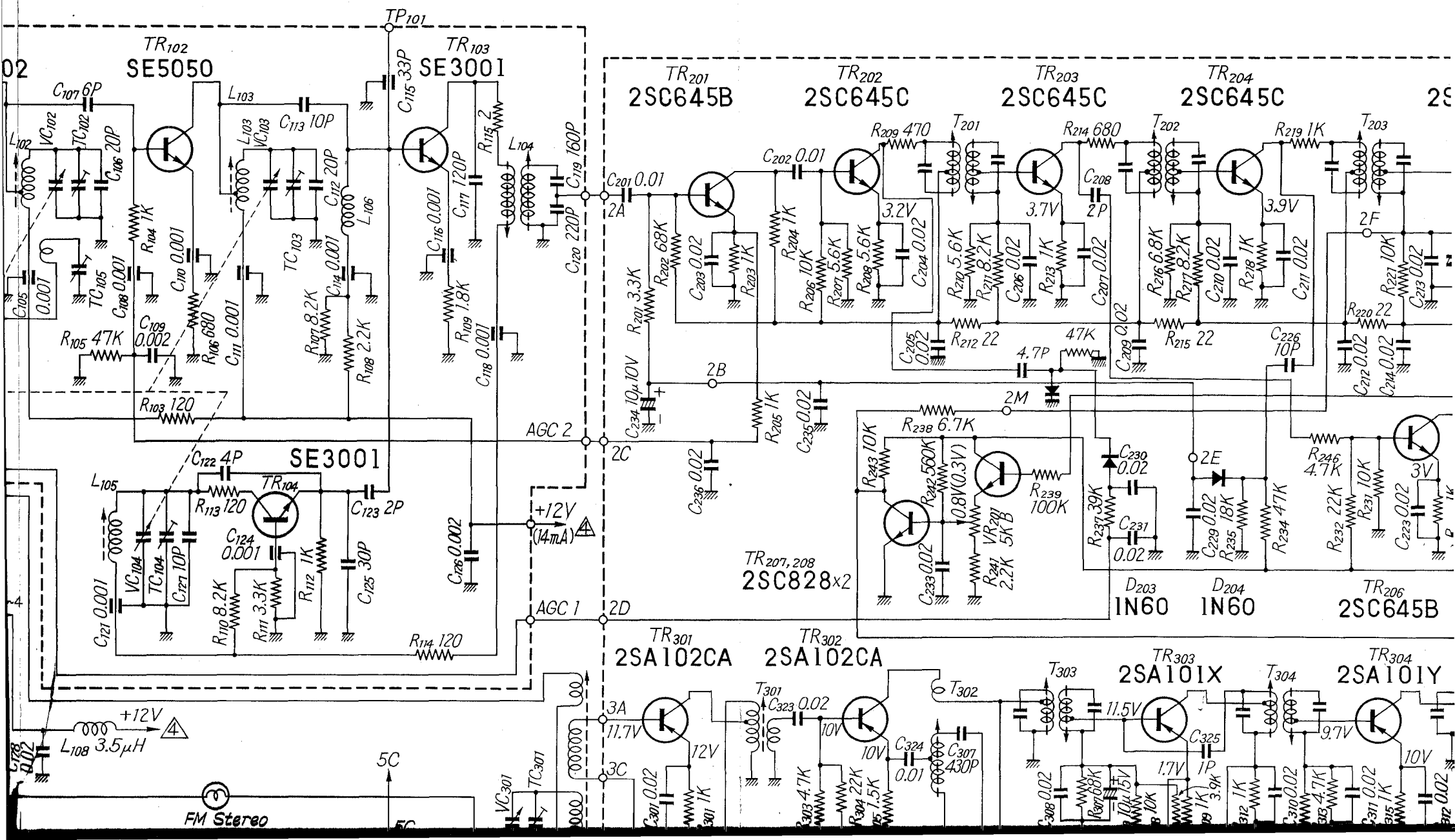


The schematic diagram illustrates the electronic circuit for the 'S' radio receiver, organized into several functional blocks. The top section features a series of transistors (TR₂₀₂ to TR₂₀₅) and diodes (D_{201,202}, D_{205,206}) for signal processing, including a 2SC645C and 2SC828x2. The middle section includes a 2SC645B transistor and a 2SC536E transistor, along with various diodes (D₂₀₃, D₂₀₄, D₂₀₈) and capacitors (C₂₀₂ to C₃₁₉). The bottom section shows a 2SA102CA transistor and a 2SA101X/2SA101Y transistor, along with a 2SC536E transistor. The circuit is powered by a 1.2V battery and includes a 3H inductor. The diagram also shows a section labeled 'Without Print Board' for the 2SC536E transistor.

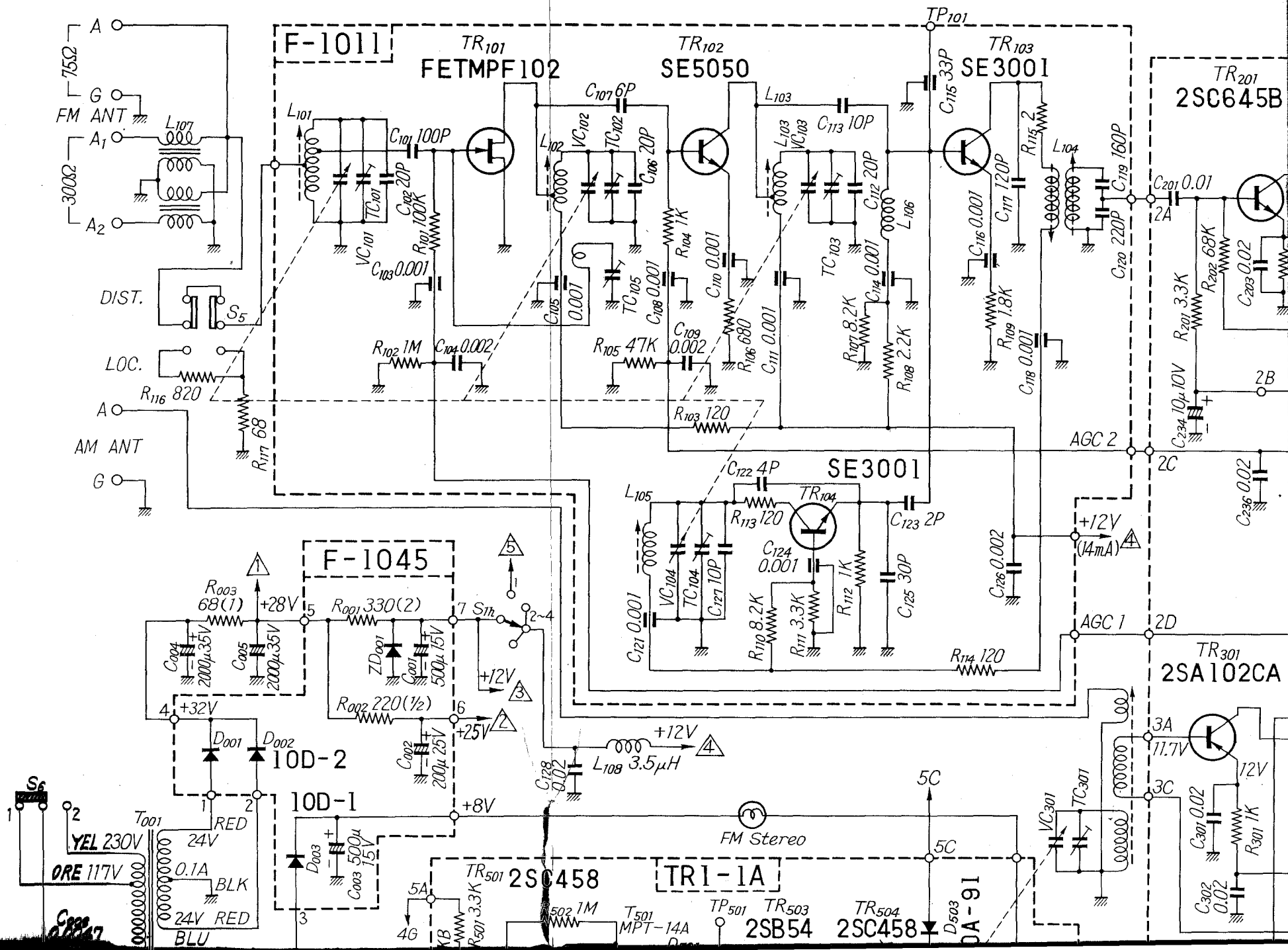




SANSUI TU-777 SCHEMATIC DIAGRAM



SANSUI TU-777 SCH



EMATIC DIAGRAM

