

SERVICE MANUAL



STEREO TURNTABLE

TP 1024
(EUROPE)



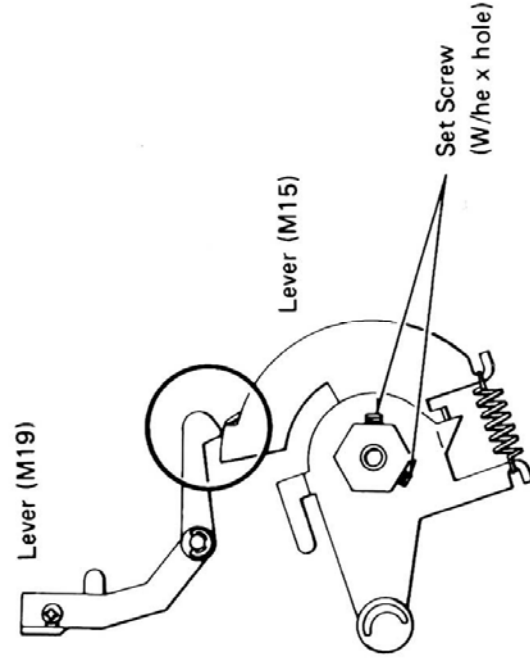
SPECIFICATIONS

Motor	Brushless servo motor	Stylus pressure	1.5 – 2.5g.
Drive system	Direct drive/Full auto	Frequency response	20 – 20,000Hz
Speed	33-1/3 and 45 rpm	Channel separation	Better than 20dB
Wow and flutter	Less than 0.04% WRMS	Power source	AC: 115/220V, 50Hz
Turntable platter	312mm (12-5/16"), 1kg (2 lbs. 3 ozs.)	Power consumption	6W
Tone arm	Static-balance type	Dimensions (Approx.)	440 (W) x 390 (D) x 140 (H) mm (17-3/8" x 15-3/8" x 5-9/16")
Tracking error	±1.5°	Weight (Approx.)	5.8kg (12 lbs. 13 ozs.)
Overhang	15mm		
Cartridge and stylus	Magnetic stereo cartridge (MM type) (No. MG-35D), 0.6 mil diamond stylus (No. ST-35D)		

ADJUSTMENT

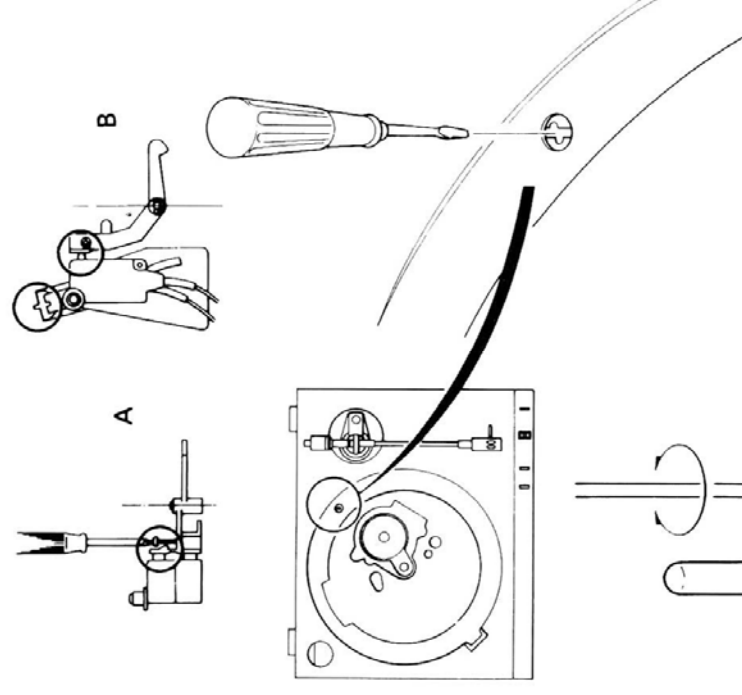
ADJUSTMENT OF TONEARM LEVER

Set the turntable unit upside down after putting the tonearm on the arm rest and securing it. Then, loosen the set screw (w/hex hole) and position the lever (M15) in such a way that the protrusion of the microswitch contacts the foremost end of the lever.



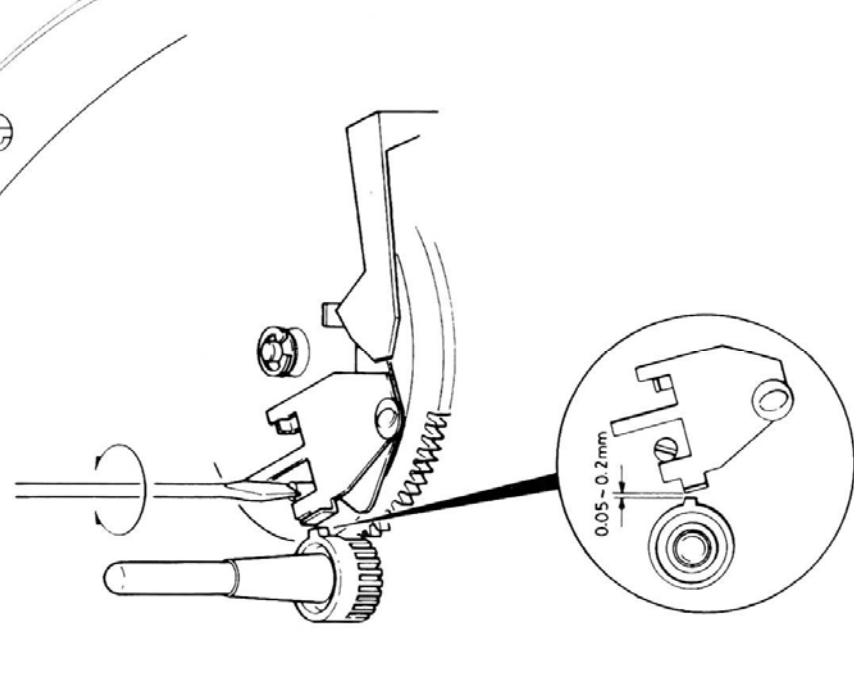
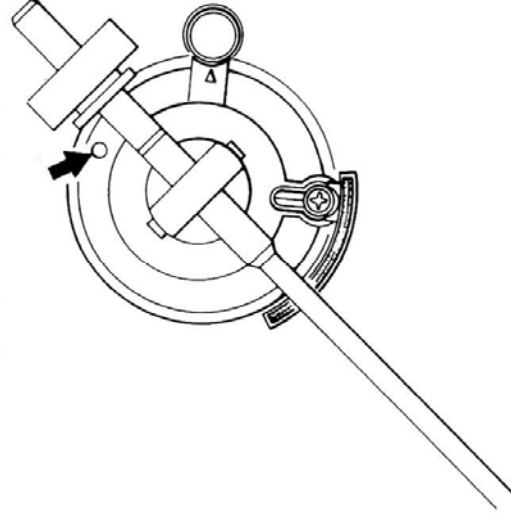
ADJUSTMENT OF MICRO-SWITCH

- When the needle in the arm has reached a point between 35 to 38mm of the outer edge of the record, insert the screwdriver in the hole shown in the figure and adjust the micro-switch so that the turntable begins to revolve or the neon lamp lights up.
- As you move the arm toward the turntable, the lever (M19) pressing down on the micro-switch will become disengaged and the turntable will begin to revolve or the neon lamp will light up. In order to make certain that, whichever of these two actions takes place, the other will be activated by the arm within a distance of 5mm, use the nut 2.6 x 10mm (Y21) to adjust the timing.



ADJUSTMENT OF AUTO-RETURN

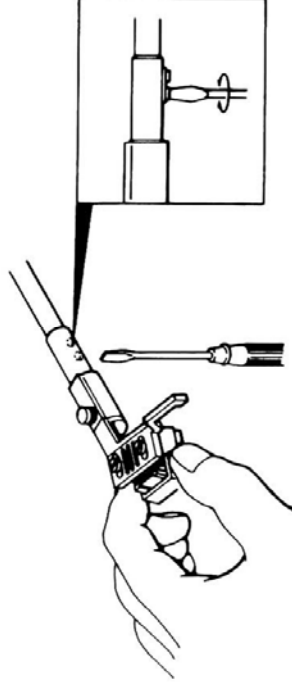
- Turn the shaft C to adjust (visually) so that the most approach value of the protrusion A of a lever caulked to a gear (M34) and the protrusion B of a pinion of the motor shaft comes within the range of 0.05 ~ 0.2mm.
- There is a shaft which is accessible with an ordinary screwdriver through the hole below the tonearm. (See illustration at right.) When the stylus has reached a point approximately 55mm from the turntable center, turn the shaft clockwise or counterclockwise and select a position where it actuates the auto-return.



ADJUSTMENT

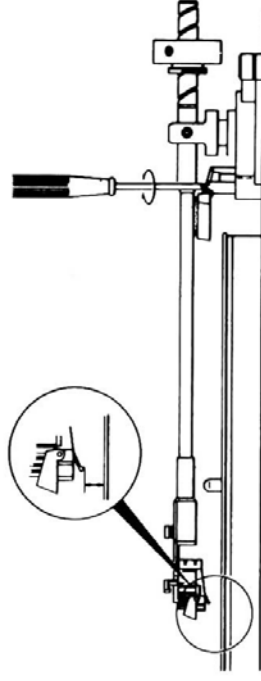
ADJUSTMENT OF HEADSHELL

The headshell attached to the tonearm should not be inclined either to the right or to the left. If necessary, loosen the two screws on the bottom of the tubular arm and adjust the headshell. Be sure that the stylus is normal to the record surface.



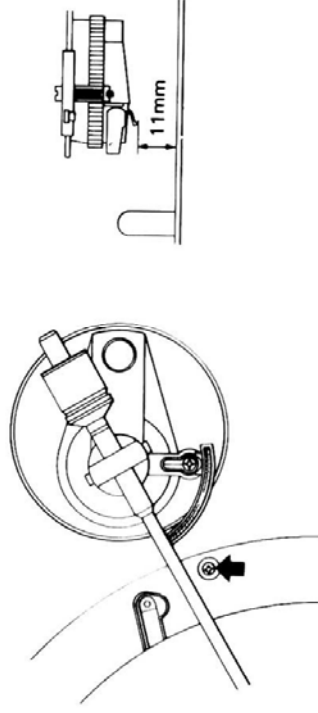
ADJUSTMENT OF TONEARM LIFTER

Set the cuing lever to UP and the distance between the stylus and the record to about 9mm by adjusting the arm lifter screw.



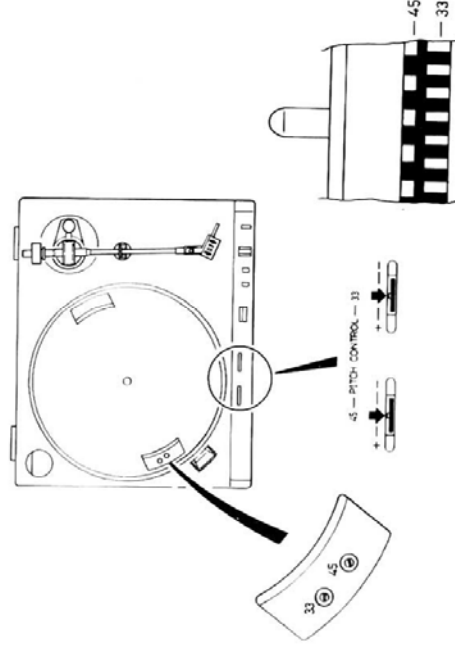
ADJUSTMENT OF LIFT-UP LEVER SPRING

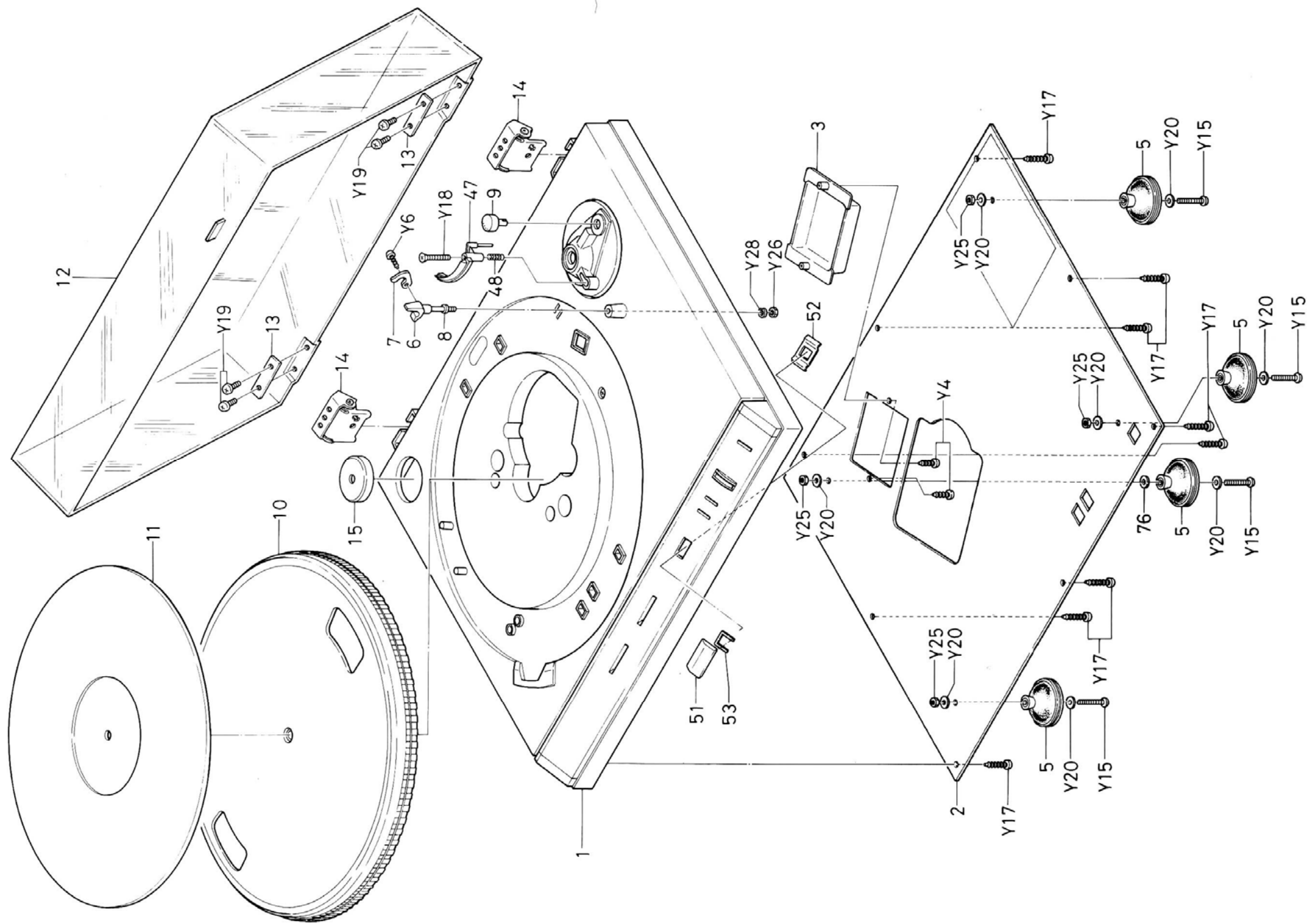
Switch off power when the auto-return has worked and adjust spring tension to provide a clearance of 11mm between the stylus and the record.

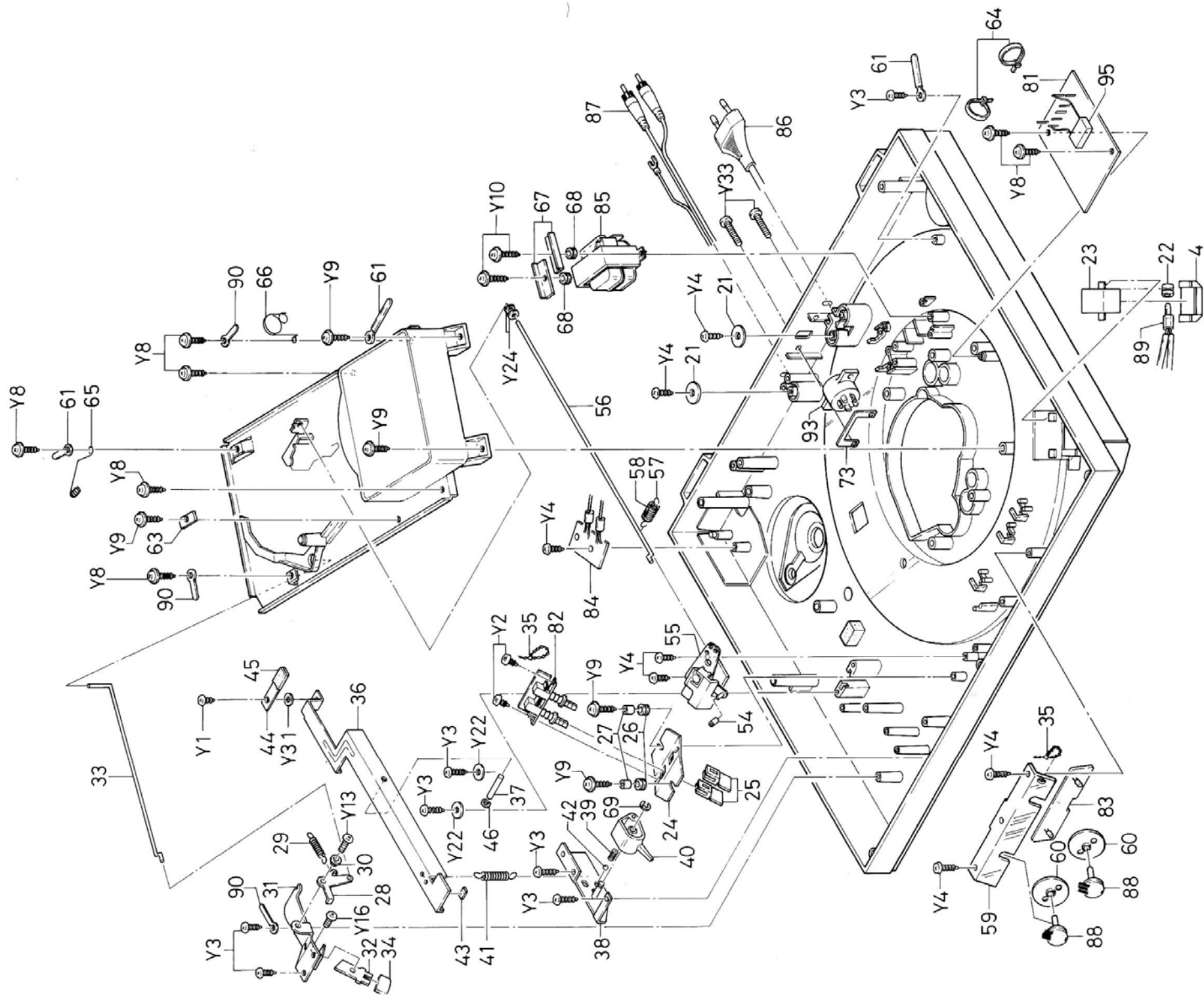


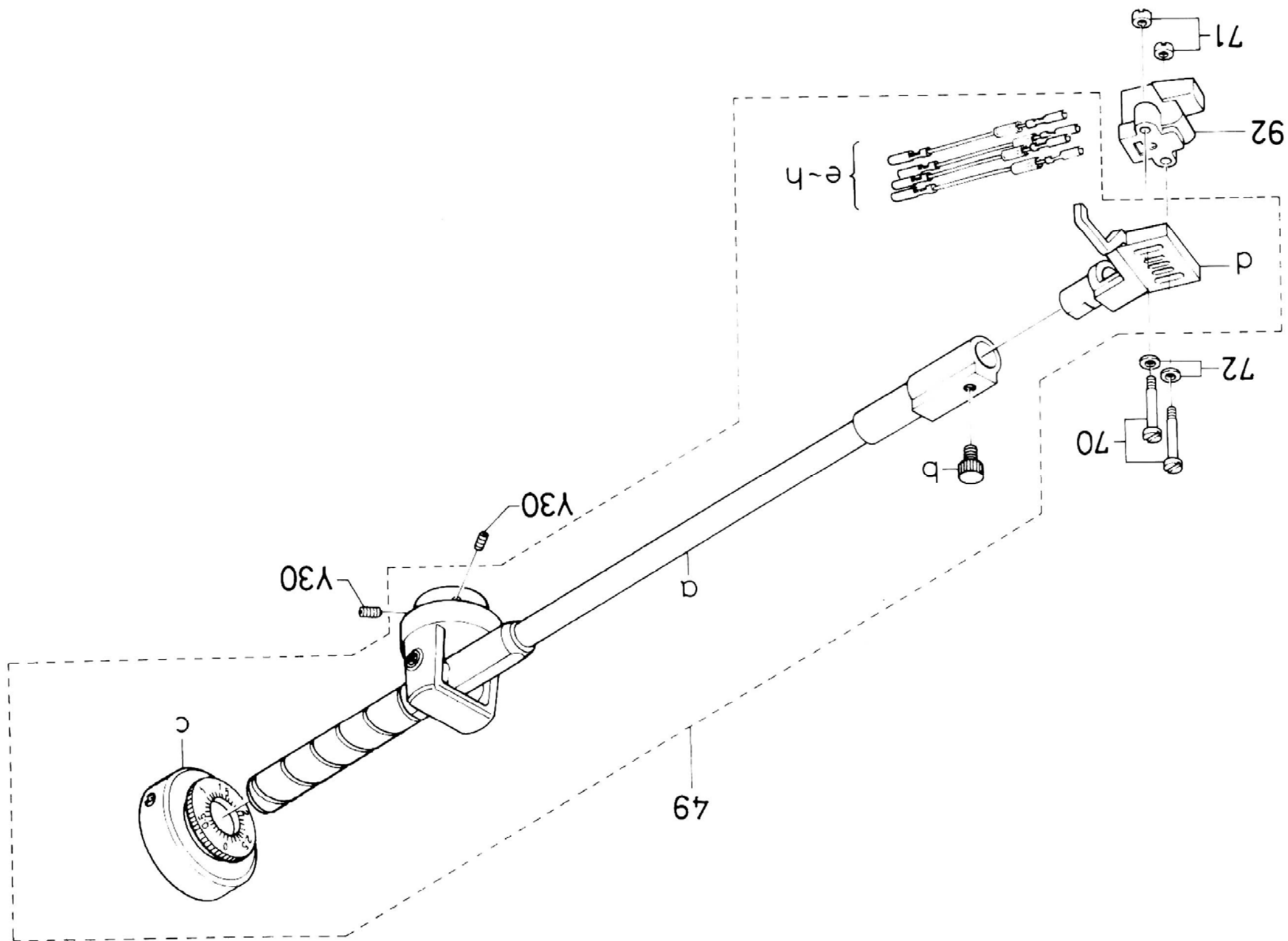
ADJUSTMENT OF REVOLUTION NUMBER

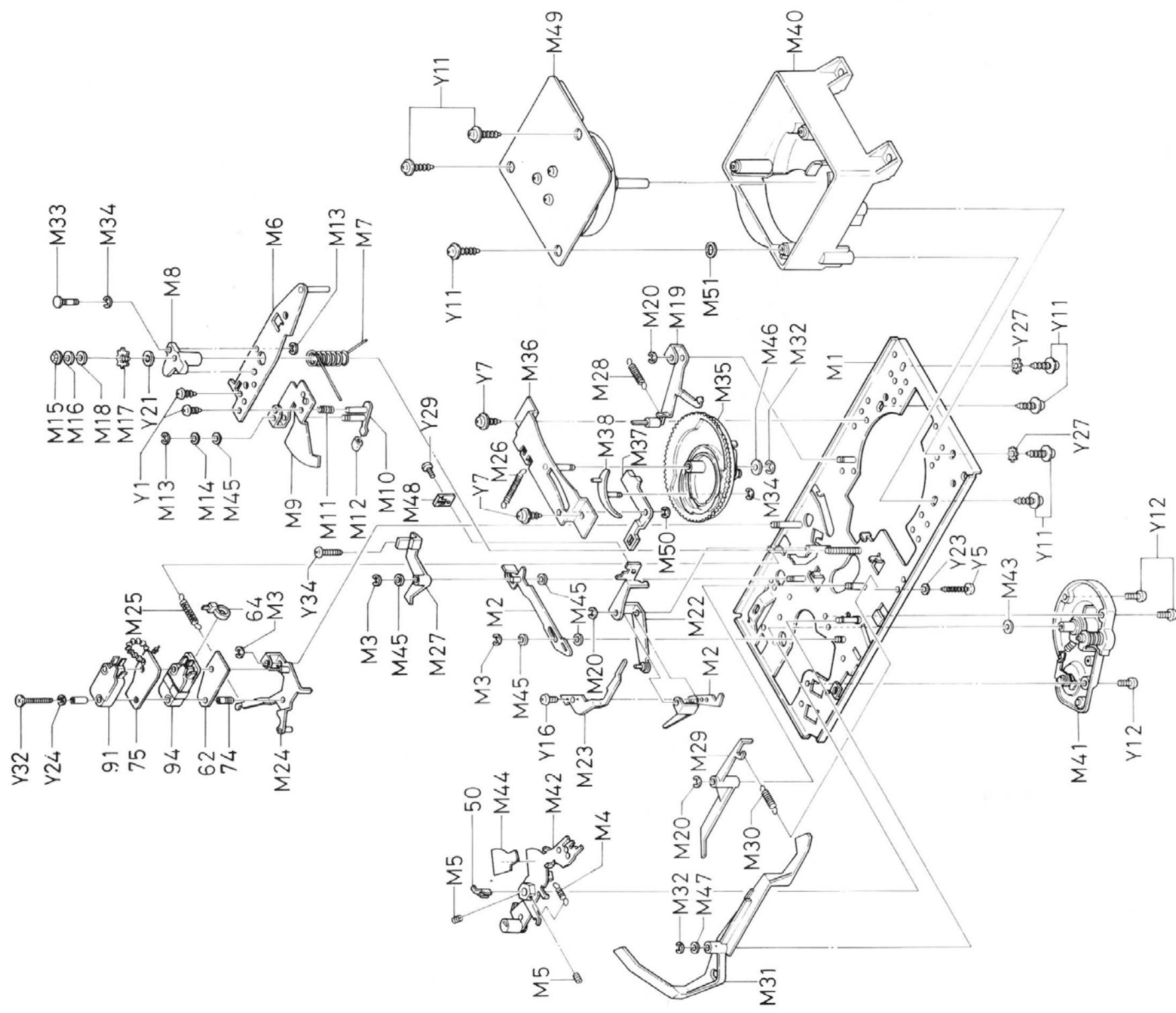
Set the pitch control knobs to the central position. Insert the screwdriver into the hole for revolution number adjustment, and turn it so that the stripe pattern of a stroboscope looks like stationary. Adjustment should be done at 33 rpm and 45 rpm respectively.











Q 1	2SD 330E or 2SD 880Y
D 1	IN 4003 or SRIK2
D 2	IN 4003 or SRIK2
D 3	IN 4003 or SRIK2
D 4	IN 4003 or SRIK2
LED 1	SLP135BA or SLP135BB
LED 2	SLP135BA or SLP135BB

