

HOME CINEMA CENTER & EFFECT SPEAKERS

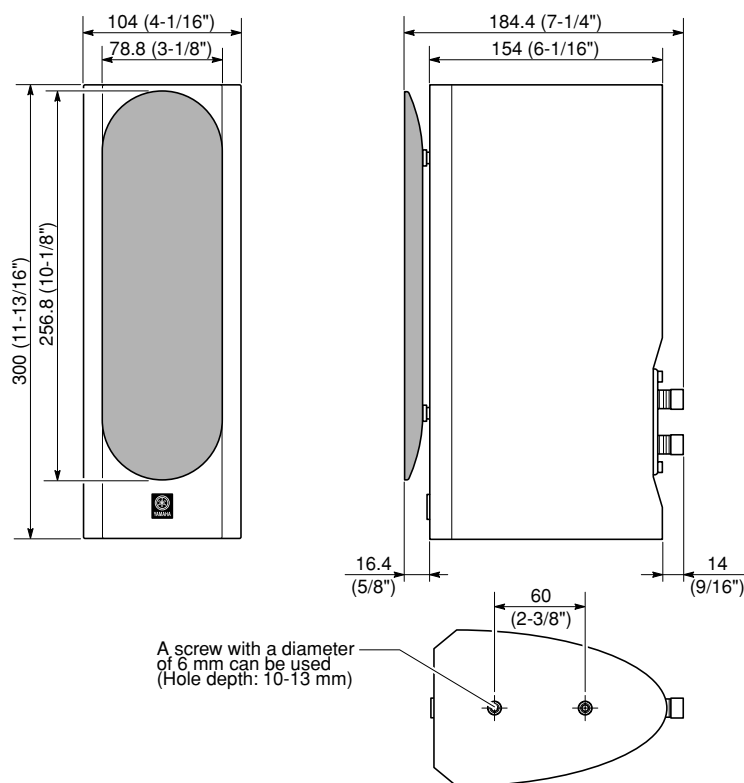
NS-PC8 (=NS-ELC8/NS-CLC8)

SERVICE MANUAL

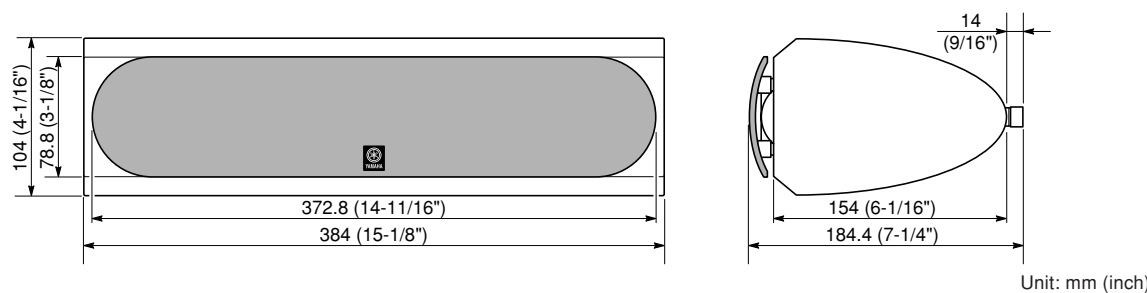
The NS-PC8 consists of 2 units of the NS-ELC8 and 1 unit of the NS-CLC8.

■ DIMENSIONS

NS-ELC8



NS-CLC8



このサービスマニュアルは、エコマーク認定の再生紙を使用しています。
This Service Manual uses recycled paper.

© 2005 YAMAHA CORPORATION All rights reserved.

100960



YAMAHA

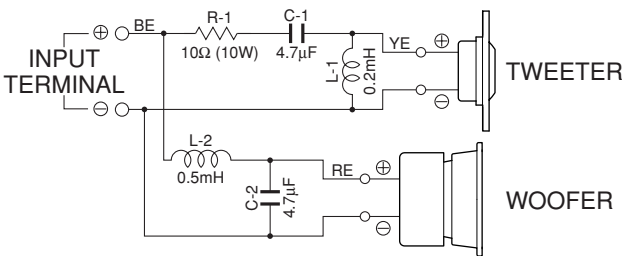
YAMAHA CORPORATION
P.O.Box 1, Hamamatsu, Japan

'05.05

NS-PC8

■ NETWORK CIRCUIT DIAGRAM

NS-ELC8



■ SPECIFICATIONS

NS-ELC8

Type 2-Way Acoustic Suspension Speaker System
Magnetic Shielding Type

Drivers
Woofer 7 cm (2-3/4") Cone Type
Tweeter 2.2 cm (7/8") Balanced Dome Type

Frequency Response 100 Hz to 20 kHz

Impedance 6 ohms

Nominal Input Power 20 W

Maximum Input Power 50 W

Sensitivity 84 dB/2.83 V/m

Crossover Frequency 7 kHz

Input Terminal Screw Type

Dimensions (W x H x D)
104 x 300 x 170 mm (4-1/16" x 11-13/16" x 6-11/16")

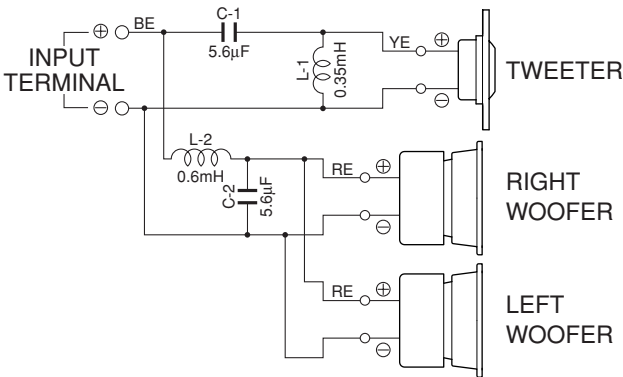
Weight 1.8 kg (3 lbs. 16 oz)

Finish
White Wood Color T, G models
Dark Brown Color T, G models

Accessories Speaker Cable (10 m) x 2

* Specifications subject to change without notice due to product improvements.

NS-CLC8



NS-CLC8

Type 2-Way Acoustic Suspension Speaker System
Magnetic Shielding Type

Drivers
Woofer 7 cm (2-3/4") Cone Type x 2
Tweeter 3 cm (1-3/16") Aluminum Dome Type

Frequency Response 85 Hz to 20 kHz

Impedance 6 ohms

Nominal Input Power 30 W

Maximum Input Power 100 W

Sensitivity 84 dB/2.83 V/m

Crossover Frequency 4 kHz

Input Terminal Screw Type

Dimensions (W x H x D)
384 x 104 x 170 mm (15-1/8" x 4-1/16" x 4-3/16")

Weight 2.4 kg (5 lbs. 5 oz)

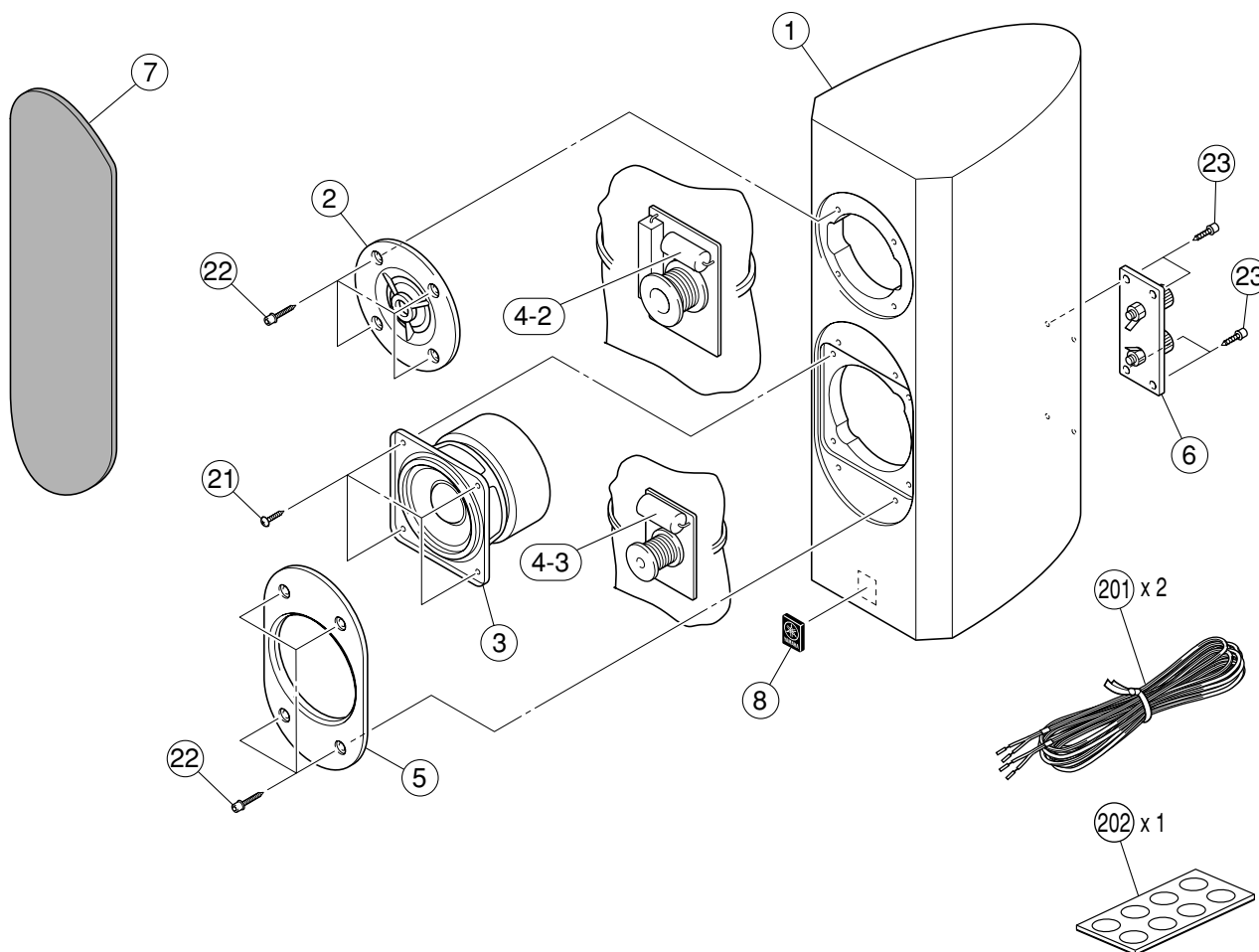
Finish
White Wood Color T, G models
Dark Brown Color T, G models

Accessories Speaker Cable (4 m) x 1
Double Sided Adhesive Tape x 2
Stand x 2
Fasteners x 2

* Specifications subject to change without notice due to product improvements.

1

NS-ELC8 EXPLODED VIEW

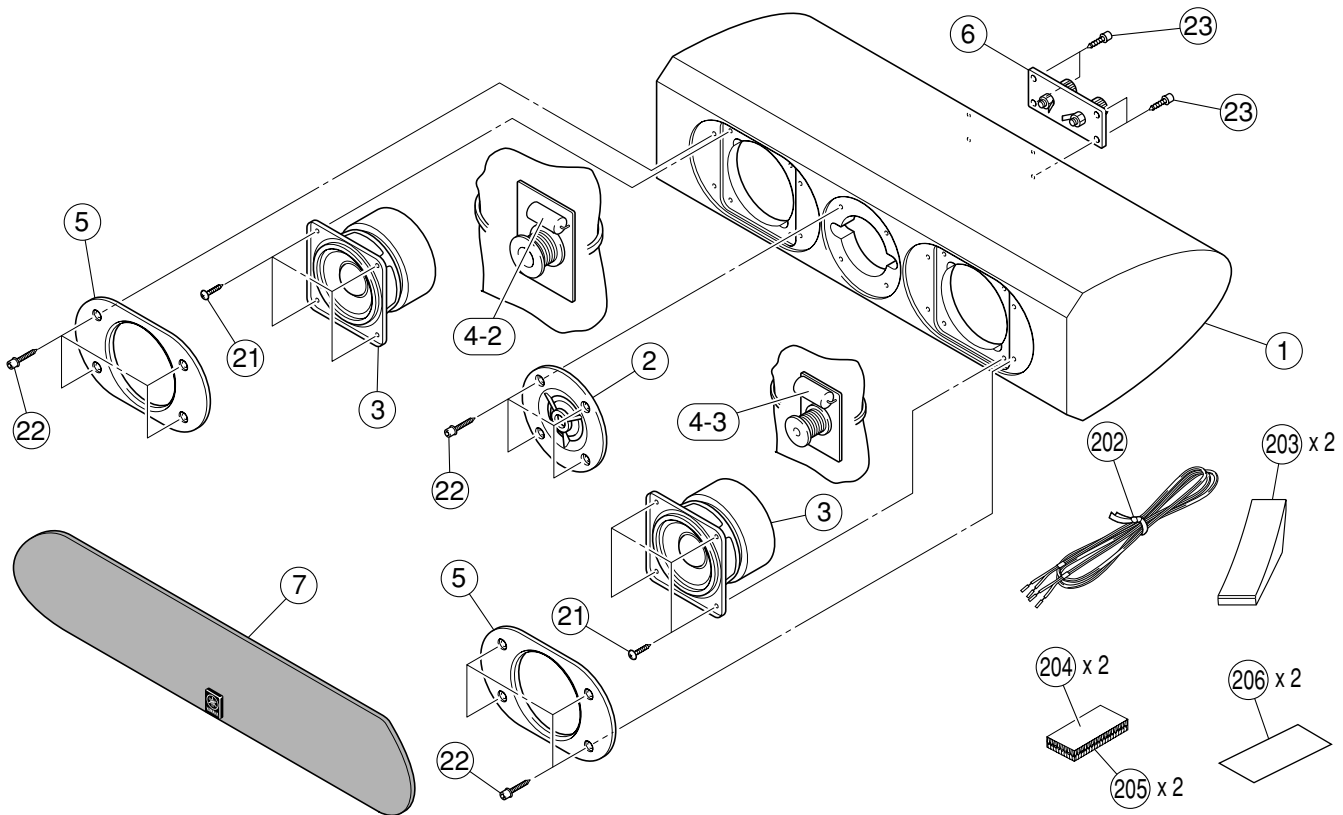


Ref. No.	Part No.	Description	Remarks	Markets
* 1	WF166300	CABINET	NS-ELC8	WH
* 1	WF166400	CABINET	NS-ELC8	BR
* 2	X6621A00	DRIVER TWEETER	2.5cm 6Ω	JA05Z7
* 3	X6623A00	DRIVER WOOFER	7cm 6Ω	JA0764
* 4-2	WF679800	POLYPROPYLENE FILM CAP	4.7uF 100V	
* 4-3	WF322700	ELECTROLYTIC CAP	4.7uF 100V	
* 5	WF056900	FRONT PANEL B		
* 6	WF164900	SPEAKER TERMINAL	SCREW TYPE	
* 7	WF166800	FRONT GRILLE ASS'Y	NS-ELC8	WH
* 7	WF445500	FRONT GRILLE ASS'Y	NS-ELC8	BR
* 8	WF159400	EMBLEM		
* 21	EP040250	BIND HEAD TAPPING SCREW	4x16 MFZN2BL	
* 22	WF204000	HEXAGON SOCKET TAPPING SCREW	4x20 MFN133	
* 23	V6948800	HEXAGON SOCKET TAPPING SCREW	4x16 MFZN2BL	
		ACCESSORIES		
201	WF164800	SPEAKER CABLE	10m 1pc	
202	WG138500	NONSKID PAD	M12 t1 8pcs/set	

* New Parts

NS-PC8

■ NS-CLC8 EXPLODED VIEW



Ref. No.	Part No.	Description	Remarks	Markets
* 1	WF166500	CABINET	NS-CLC8	WH
* 1	WF166600	CABINET	NS-CLC8	BR
* 2	X6619A00	DRIVER TWEETER	2.5cm 6Ω	JA05Z5
* 3	X6624A00	DRIVER WOOFER	7cm 12Ω	JA0765
* 4-2	WF679900	POLYPROPYLENE FILM CAP	5.6uF 100V	
* 4-3	WF322800	ELECTROLYTIC CAP	5.6uF 100V	
* 5	WF056900	FRONT PANEL B		
* 6	WF164900	SPEAKER TERMINAL	SCREW TYPE	
* 7	WF166900	FRONT GRILLE ASS'Y	NS-CLC8	WH
* 7	WF445600	FRONT GRILLE ASS'Y	NS-CLC8	BR
* 21	EP040250	BIND HEAD TAPPING SCREW	4x16 MFZN2BL	
* 22	WF204000	HEXAGON SOCKET TAPPING SCREW	4x20 MFN133	
* 23	V6948800	HEXAGON SOCKET TAPPING SCREW	4x16 MFZN2BL	
		ACCESSORIES		
* 202	WF164700	SPEAKER CABLE	4m 1pc	
	203	WF165100	STAND	1pc
	204	WF165200	FASTENER A	40x25 1pc
	205	WF165300	FASTENER B	40x25 1pc
	206	WF165400	DOUBLE SIDED ADHESIVE TAPE	80x25 1pc

* New Parts